

Pretul 23065

Pretul 20 L Air Compressor User Manual

Model: 23065

INTRODUCTION

This manual provides essential information for the safe and efficient operation, maintenance, and troubleshooting of your Pretul 20 L, 2-1/2 HP (maximum power), 120 V Compressor. Please read this manual thoroughly before using the compressor to ensure proper handling and to prevent injury or damage.



Image: Pretul 20 L Air Compressor, a yellow and black portable unit with wheels and a handle.

Safety Information

WARNING: Failure to follow these safety instructions may result in serious injury or property damage.

- Always wear appropriate personal protective equipment (PPE), such as safety glasses, when operating the compressor.
- Ensure the compressor is placed on a stable, level surface to prevent tipping.
- Do not operate the compressor in wet or damp conditions, or near flammable liquids or gases.

- Before performing any maintenance or adjustments, always disconnect the compressor from the power source and release all air pressure from the tank.
- Keep children and bystanders away from the operating area.
- Regularly inspect the power cord for damage. Do not use if the cord is frayed or damaged.
- Do not modify the compressor or its components. Use only original replacement parts.

PRODUCT OVERVIEW AND COMPONENTS

Familiarize yourself with the various parts of your Pretul air compressor before operation.



Image: Diagram showing the labeled components of the Pretul air compressor, including the single-phase air compressor, aluminum crankcase, transport handle, pressure regulator, quick-connect valves, pressure gauges, rubber front support, drain valve, and lightweight, transportable, resistant, and easy-to-maintain design.

- **Single-phase air compressor:** The main unit that compresses air.
- **Aluminum Crankcase:** Designed for better heat dissipation.
- **Transport Handle:** For easy portability.
- **Pressure Regulator:** Adjusts the output air pressure.
- **Quick-Connect Valves:** For attaching air tools and hoses.

- **Pressure Gauges:** Display tank pressure and regulated output pressure.
- **Rubber Front Support:** Provides stability.
- **Drain Valve:** Located at the bottom of the tank for moisture removal.
- **Wheels:** For easy movement of the compressor.

SPECIFICATIONS

Key technical specifications for the Pretul 20 L Air Compressor.

Feature	Specification
Brand	Pretul
Model Name	23065
Part Number	COMP-20LP
Voltage	120 Volts
Maximum Power	2.5 Horsepower
Capacity	20 Liters (5.2 Gallons)
Noise Level	69 dB
Power Source	Corded Electric
Item Weight	21 Kilograms (46.2 pounds)
Product Dimensions (L x W x H)	20.87 x 13.39 x 22.83 inches (53 x 34 x 58 cm)
Recommended Uses	Blow Cleaning, Spraying, Tire Inflation
Special Feature	Built-In Gauge



Image: Diagram illustrating the dimensions of the Pretul air compressor: Height 58 cm, Depth 53 cm, Base 34 cm.

SETUP

1. Unpacking and Inspection

Carefully remove the compressor from its packaging. Inspect the unit for any signs of damage that may have occurred during shipping. Report any damage to your retailer immediately.



Image: The Pretul air compressor inside its retail packaging, showing the product details on the box.

2. Placement

Place the compressor on a firm, level surface in a clean, well-ventilated area. Ensure there is adequate space around the unit for air circulation and maintenance access. Avoid placing it near heat sources or in direct sunlight.

3. Power Connection

Connect the compressor to a grounded 120 V electrical outlet. Ensure the circuit can handle the compressor's power requirements (2.5 HP maximum power).

4. Oil Check (for oil-lubricated models)

This is an oil-lubricated compressor. Before first use, and periodically thereafter, check the oil level. Ensure the oil level is between the minimum and maximum marks on the dipstick or sight glass. Add appropriate compressor oil if necessary.

5. Handle and Wheel Assembly (if not pre-assembled)

If the handle and wheels are not pre-assembled, attach them according to the included hardware. The handle is designed for easy transport.



Image: A person demonstrating how to transport the Pretul air compressor using its integrated handle and wheels.

OPERATING INSTRUCTIONS

1. Initial Start-up

1. Ensure the drain valve at the bottom of the tank is closed.
2. Plug the compressor into a suitable electrical outlet.
3. Turn the power switch to the "ON" position. The compressor will begin to build pressure.

4. Allow the compressor to reach its maximum pressure and shut off automatically. This indicates the pressure switch is functioning correctly.

2. Adjusting Output Pressure

The compressor features a pressure regulator to control the air pressure delivered to your tools.

1. Attach your air hose and tool to one of the quick-connect valves.
2. Turn the pressure regulator knob (usually located near the output gauges) clockwise to increase pressure and counter-clockwise to decrease pressure.
3. Monitor the output pressure gauge to set the desired pressure for your application.



Image: A person demonstrating the adjustment of the air regulating valve on the compressor, with an air hose connected.

3. Overcurrent Protector

Your compressor is equipped with an overcurrent protector to prevent motor damage in case of overload. If the compressor stops unexpectedly, check the overcurrent protector button. If it has popped out, allow the motor to cool down for a few minutes, then press the button to reset it.



Protector de sobrecorriente

Image: Close-up view of the overcurrent protector button on the Pretul air compressor, with a person using a spray gun in the background.

4. Applications

This compressor is suitable for various applications including:

- **Blow Cleaning:** Use an air blow gun to clean dust and debris from surfaces.
- **Spraying:** Connect a spray gun for painting or other liquid applications.
- **Tire Inflation:** Use an inflation gun with a gauge to inflate tires and other inflatables.

MAINTENANCE

Regular maintenance is crucial for the longevity and optimal performance of your compressor.

1. Draining the Air Tank

WARNING: Always drain the tank after each use or at least daily. Moisture buildup can lead to rust and tank failure.

1. Turn off the compressor and disconnect it from the power source.
2. Open the drain valve located at the bottom of the air tank.
3. Allow all condensed moisture to drain completely.
4. Close the drain valve tightly after draining.

2. Oil Maintenance

As an oil-lubricated compressor, regular oil checks and changes are necessary.

- **Check Oil Level:** Before each use, ensure the oil level is within the safe operating range.
- **Change Oil:** Refer to the specific oil change interval recommended by Pretul (typically after the first 20 hours, then every 200 hours or 3 months, whichever comes first). Use only compressor-specific oil.

3. Cleaning

- Keep the compressor clean and free of dust and debris.
- Clean the air filter regularly (if accessible) to ensure proper airflow and prevent motor strain.

TROUBLESHOOTING

This section provides solutions to common issues you might encounter.


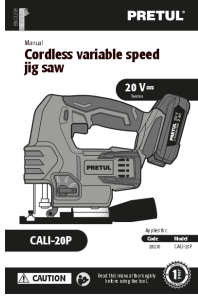
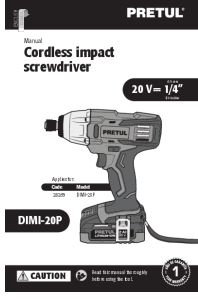

Problem	Possible Cause	Solution
Compressor does not start.	No power, tripped circuit breaker, faulty switch.	Check power connection, reset circuit breaker, contact service if switch is faulty.
Compressor runs continuously or cycles too frequently.	Air leak in system, faulty pressure switch.	Check all connections for leaks, tighten fittings. If problem persists, pressure switch may need replacement.
Low air pressure at output.	Pressure regulator set too low, air leak, clogged air filter.	Adjust pressure regulator, check for leaks, clean or replace air filter.
Excessive noise or vibration.	Loose components, worn parts, low oil level.	Check and tighten all fasteners, inspect for worn parts, check and add oil if needed.
Overcurrent protector trips.	Overload, motor overheating, low voltage.	Reduce load, allow motor to cool, ensure proper voltage supply. Reset button.

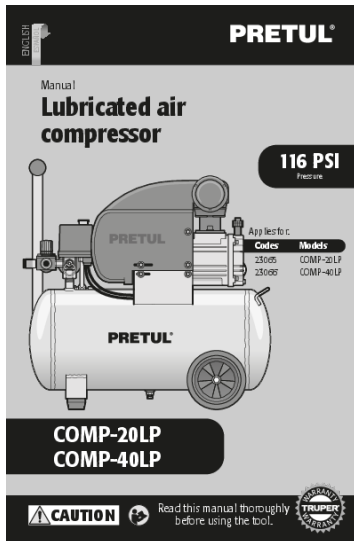
If you encounter issues not listed here or if the suggested solutions do not resolve the problem, please contact customer support.

WARRANTY AND SUPPORT

Pretul products are manufactured to high-quality standards. For information regarding warranty coverage and terms, please refer to the warranty card included with your purchase or visit the official Pretul website. For technical assistance, spare parts, or service inquiries, please contact Pretul Customer Support. Details can typically be found on the product packaging or the manufacturer's website. You can also visit the [Pretul brand page on Amazon](#) for more information.

Related Documents

	<p>Pretul ESMA-4-1/2P2 Angle Grinder Instruction Manual</p> <p>This manual provides instructions for the safe operation, maintenance, and assembly of the Pretul ESMA-4-1/2P2 angle grinder. It includes technical specifications, safety guidelines, and a list of authorized service centers.</p>
	<p>PRETUL CALI-20P Cordless Variable Speed Jig Saw Manual</p> <p>Comprehensive manual for the PRETUL CALI-20P cordless variable speed jig saw, covering safety, operation, maintenance, troubleshooting, and warranty information.</p>
	<p>PRETUL Cordless Impact Screwdriver DIMI-20P User Manual</p> <p>Comprehensive user manual for the PRETUL DIMI-20P cordless impact screwdriver, covering technical specifications, safety instructions, operation, maintenance, troubleshooting, and warranty information.</p>
	<p>PRETUL DES-25P Gas String Trimmer User Manual Safety, Operation, Maintenance</p> <p>Comprehensive user manual for the PRETUL DES-25P gas string trimmer. Covers safety guidelines, operating instructions, maintenance procedures, troubleshooting tips, and warranty information.</p>



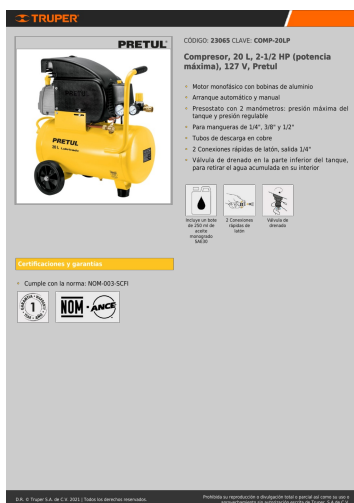
[\[pdf\]](#) User Manual Troubleshooting Guide Warranty Accessories Label

23065 23066 07 Instructivo Manual Compresor 40 L 3 HP potencia máxima 127 V Pretul Compresores y Herramientas Neumáticas truper admin descargables manual |||

ENGLISH ESPAOL Manual Lubricated air compressor 116 PSI Pressure Applies for: Codes **23065** 23066 Models COMP-20LP COMP-40LP COMP-20LP COMP-40LP

CAUTION Read this manual thoroughly before using the tool. Technical Data 3 Power Requirements 3 General Safety Warnings for Power Tools 4 Saf...

lang:en **score:29** filesize: 1.01 M page_count: 24 document date: 2021-12-02



[\[pdf\]](#) User Manual

Compresor 20 L 2 1 HP potencia máxima 127 V Pretul EPAMotor monofásico con bobinas de aluminio Arranque automático y manual Presostato manómetros presión del tanque regulable1412064sv epaenlinea sv documentos 1412064 srsltid AfmBOoo2Fm9

DZf0KG9tPkvJxzEnKbX3vsh4F0azKGZuqfmogVv8biZK EPACompresor regulableMotor regulablesv AfmBOopNvs0w3XnTtAUje W t7BR2GvUmgmAgx7i3xEvABahqUV9VP41sv ||| ||| Certificaciones y garantas Cumple con la norma: NOM-003-SCFI CDIGO: 23065 CLAVE: COMP-20LP Compresor, 20 L, 2-1/2 HP potencia mxima , 127 V, Pretul Motor monofscico con bobinas de aluminio Arranque automtico y manual Presostato con 2 manmetr

Certificaciones y garantas Cumple con la norma: NOM-003-SCFI CDIGO: **23065** CLAVE: COMP-20LP Compresor, 20 L, 2-1/2 HP potencia mxima , 127 V, Pretul Motor monofscico con bobinas de aluminio Arranque automtico y manual Presostato con 2 manmetros: presin mxima del tanque y presin regulable Para m...

lang:es **score:28** filesize: 633.52 K page_count: 2 document date: 2021-12-30

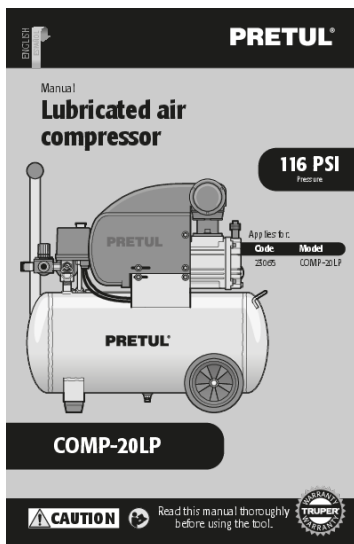


[\[pdf\]](#) User Manual

Pretul Compresor Lubricado COMP 20LP 20 Litros 127V 23065 Cyberpuerta mx 60ba6bc9230d0 cdn cyberpuerta storage articles multimedia 60b a6b c92 |||

Certificaciones y garantas Cumple la norma NOM-003-SCFI CDIGO: **23065** CLAVE: COMP-20LP Compresor, 20 L, 2-1/2 HP potencia mxima , 127 V, Pretul Arranque automtico y manual Presostato con 2 manmetros: presin mxima y presin regulable Para manguera de 1/4 , 3/8 y 1/2 Tubos de descarga en cobre ...

lang:es **score:27** filesize: 628.72 K page_count: 2 document date: 2021-10-04



[\[pdf\]](#) User Manual Troubleshooting Guide Warranty Accessories Label

24357 06 INSTRUCTIVO 1 Kit compresor 20L 2 HP manguera PVC y pistola Pretul Ferreteria la

Obratrupe admin descargables manual |||

ENGLISH ESPAOL Manual Lubricated air compressor 116 PSI Pressure Applies for:
Code Model **23065** COMP-20LP COMP-20LP CAUTION Read this manual thoroughly
before using the tool. Technical data Power requirements General power tool safety
warnings Safety warnings for pneumatic compressors Part...

lang:en **score:21** filesize: 1 M page_count: 24 document date: 2023-04-14