

NJOY PWUP-OL300AP-AZ01B

NJOY Aten Pro 3000VA Uninterruptible Power Supply (UPS) User Manual

Model: PWUP-OL300AP-AZ01B

1. INTRODUCTION

The NJOY Aten Pro 3000VA Uninterruptible Power Supply (UPS) is designed to provide reliable power protection for sensitive electronic equipment. Featuring double conversion online technology and pure sine wave output, this UPS ensures continuous operation during power outages, voltage fluctuations, and spikes with zero transfer time. It is ideal for servers, data networks, and other critical systems requiring stable and clean power.

2. SAFETY INSTRUCTIONS

Please read and follow these safety instructions carefully before installing, operating, or maintaining the UPS. Failure to do so may result in injury or damage to the equipment.

- **Electrical Safety:** Connect the UPS to a grounded AC power outlet. Do not remove the grounding prong.
- **Indoor Use Only:** This UPS is intended for indoor use in a controlled environment. Avoid exposure to direct sunlight, heat sources, moisture, or corrosive substances.
- **Ventilation:** Ensure adequate ventilation around the UPS. Do not block ventilation openings.
- **Battery Safety:** Batteries contain hazardous energy. Do not open or mutilate batteries. Battery servicing should be performed or supervised by personnel knowledgeable about batteries and the required precautions.
- **Overload Protection:** Do not overload the UPS. Ensure the total power consumption of connected devices does not exceed the UPS's rated capacity.
- **Emergency Shutdown:** Familiarize yourself with the location of the ON/OFF button for emergency shutdown.

3. PRODUCT OVERVIEW

The NJOY Aten Pro 3000VA UPS features a robust design with an intuitive LCD display and essential connectivity ports.



Figure 3.1: Front view of the NJOY Aten Pro 3000VA UPS, showing the LCD screen and control panel.



- | | | | |
|----------|--------------------------|----------|------------------------|
| 1 | Interfaccia RS232 | 4 | Slot SNMP |
| 2 | Uscite SCHUKO | 5 | Interfaccia USB |
| 3 | CIRCUIT BREAKER | 6 | AC Input |

Figure 3.2: Rear panel of the NJOY Aten Pro 3000VA UPS, detailing the various connection ports and outlets.

3.1. Rear Panel Components

1. **RS232 Interface:** For serial communication with a computer or network device.
2. **Schuko Outlets (x4):** Power output sockets for connecting protected equipment.
3. **Circuit Breaker:** Overload protection for the UPS.
4. **SNMP Slot:** Optional slot for an SNMP card for network management.
5. **USB Interface:** For USB communication with a computer.
6. **AC Input:** Power input connection for the UPS.

4. INSTALLATION AND SETUP

4.1. Unpacking

Carefully unpack the UPS and inspect it for any shipping damage. Retain the original packaging for future use or transport.

4.2. Placement

Place the UPS in a clean, dry, and well-ventilated area. Ensure sufficient clearance around the unit for proper airflow. Avoid placing it near heat sources or in direct sunlight.

4.3. Connecting to Power

1. Connect the UPS to a grounded AC power outlet using the provided power cord.
2. Allow the UPS to charge for at least 4 hours before initial use to ensure optimal battery performance.

4.4. Connecting Equipment

Connect your critical electronic devices (e.g., computers, monitors, servers) to the Schuko output outlets on the rear panel of the UPS.

5. OPERATION

5.1. Turning On/Off

- **To Turn On:** Press and hold the ON/MUTE button until you hear a beep. The UPS will perform a self-test and then enter AC mode.
- **To Turn Off:** Press and hold the OFF/ENTER button until the UPS shuts down.

5.2. LCD Display

The LCD display provides real-time status information about the UPS, including:

- Load Level
- Battery Level
- AC Mode
- Battery Mode
- Bypass Mode
- Fault Indicators

5.3. Eco Mode

The Eco Mode feature helps reduce energy consumption. When the input voltage is within the acceptable range, the UPS will bypass the inverter to save energy, increasing overall efficiency.

6. SOFTWARE MANAGEMENT

The NJOY Aten Pro 3000VA UPS includes management software for comprehensive monitoring and control. This software can be accessed via serial (RS232), USB, or an optional Ethernet (SNMP card) connection.

Il Software Management consente di:

- *Visualizzazione dello stato di funzionamento.*
- *Schedulazione dell'accensione, spegnimento, test batteria.*
- *Configurazione completa dell'UPS.*

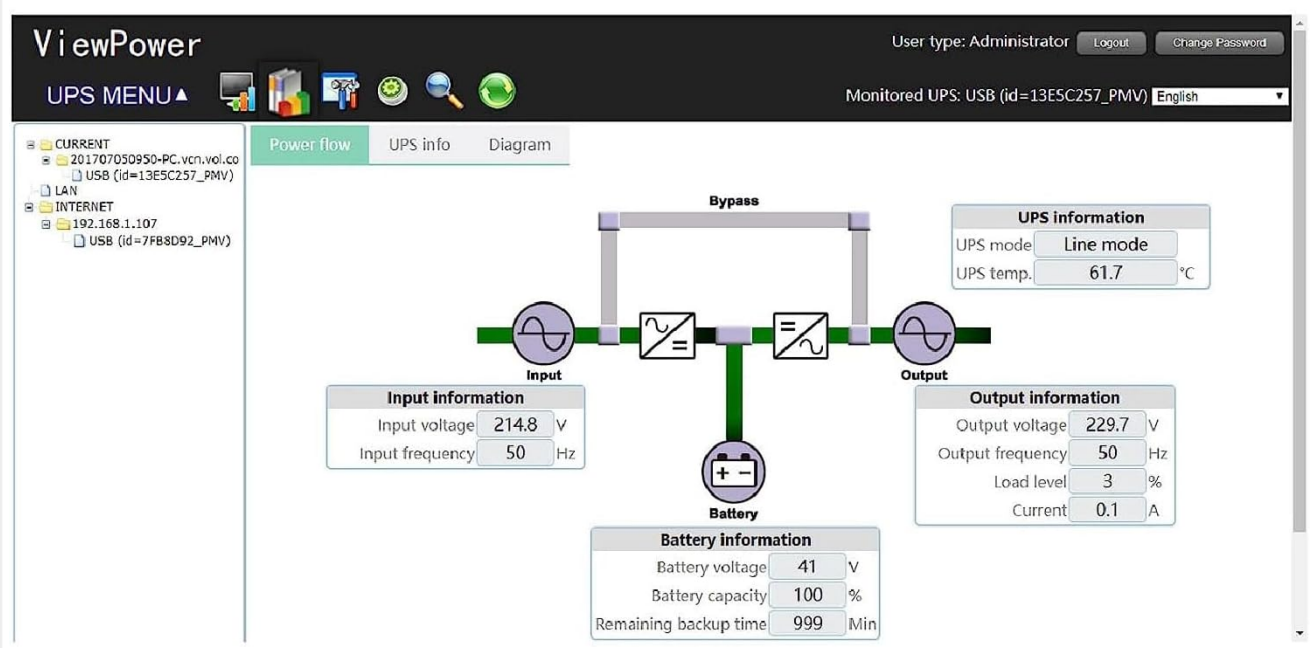


Figure 6.1: Example of the UPS management software interface.

Key features of the management software include:

- Real-time operational status visualization.
- Scheduling for power on/off and battery tests.
- Comprehensive UPS configuration options.
- Safe shutdown of the operating system.

7. MAINTENANCE

7.1. Battery Maintenance

The UPS uses sealed, maintenance-free lead-acid batteries. While these batteries do not require liquid top-ups, regular checks are recommended:

- Perform a battery self-test periodically using the management software or UPS controls.
- Replace batteries when their capacity significantly diminishes. Battery replacement should be performed by qualified personnel.

7.2. General Cleaning

Keep the UPS clean and free from dust. Use a dry cloth to wipe the exterior. Do not use liquid cleaners or solvents.

8. TROUBLESHOOTING

This section addresses common issues you might encounter with your NJOY Aten Pro 3000VA UPS.

Problem	Possible Cause	Solution
UPS does not turn on	No AC input power; Battery discharged	Check power cord connection and wall outlet; Allow UPS to charge for several hours.
UPS beeps continuously	Overload; Battery low/fault	Reduce connected load; Check battery status via LCD or software.
Short backup time	Battery not fully charged; Battery end-of-life	Charge UPS for at least 4 hours; Consider battery replacement.
UPS in Bypass mode	Internal fault; Overload	Contact technical support if fault persists; Reduce connected load.

9. SPECIFICATIONS

Detailed technical specifications for the NJOY Aten Pro 3000VA UPS.

Feature	Specification
Brand	NJOY
Model Number	PWUP-OL300AP-AZ01B
Power Rating	3000 VA / 2700 W
UPS Type	Online Double Conversion
Output Waveform	Pure Sine Wave
Nominal Input Voltage	230 Vac
Nominal Output Voltage	200, 208, 220, 230, 240 Vac
Accepted Input Voltage Range	110-300 VAC \pm 5% (50% load), 160-300 VAC \pm 5% (100% load)
Frequency	50 Hz ~ 60 Hz
Output Sockets	4 x Schuko
Transfer Time (AC-DC)	Zero
Transfer Time (Inverter to Bypass)	4 ms
Communication Ports	USB, RS232 (Optional: Smart SNMP card)

Feature	Specification
Operating Temperature	0 ~ 40 °C
Efficiency	Up to 90%
Battery Type	Sealed Lead-Acid (Maintenance-Free)
Battery Configuration	6 x 12V/9Ah
Compatible Devices	DVR, surveillance systems, Wi-Fi modem, monitor, printer, TV, desktop, gaming computer
Item Weight	27.6 Kilograms
Form Factor	Tower

10. WARRANTY AND SUPPORT

NJOY offers a comprehensive warranty and dedicated customer support for the Aten Pro series.

- **Warranty:** The NJOY Aten Pro UPS comes with a 3-year warranty. Batteries are covered by a 1-year warranty.
- **Customer Support:** For assistance before, during, or after your purchase, please contact our professional customer service team.

