

[Manuals.plus](#) /

› [Reolink](#) /

› Reolink RLK8-800B4 4K PoE Surveillance Kit User Manual

Reolink RLK8-800B4

Reolink RLK8-800B4 4K PoE Surveillance Kit User Manual

Model: RLK8-800B4 | Brand: Reolink

1. INTRODUCTION

This manual provides detailed instructions for setting up, operating, and maintaining your Reolink RLK8-800B4 4K PoE Surveillance Kit. This kit includes an 8-channel Network Video Recorder (NVR) with a pre-installed 2TB hard drive and four 4K (8MP) PoE cameras. The system features intelligent human/vehicle detection, infrared night vision, and is expandable up to 16TB storage. The cameras are IP67 waterproof, suitable for outdoor use.

2. PACKAGE CONTENTS

Please check the package contents carefully. If any items are missing or damaged, contact Reolink support.

- 1x Quick Start Guide
- 1x RLN8-410 PoE NVR
- 4x 8MP PoE Camera
- 1x NVR Power Adapter
- 4x 18m Network Cable
- 1x 1m Network Cable
- 1x HDMI Cable
- 4x Surveillance Warning Sticker
- 4x Screw Pack
- 1x USB Mouse
- 5x Mounting Template
- 4x Waterproof Lid



Image: All components included in the Reolink RLK8-800B4 kit, neatly arranged.

3. SETUP INSTRUCTIONS

3.1. Connecting Cameras to the NVR

The Reolink PoE system offers a simple Plug & Play setup. Connect the cameras directly to the NVR using the provided Ethernet cables. The NVR supplies power and transmits video data through a single cable.

1. Connect the NVR to a power source using the included power adapter.
2. Connect one end of an Ethernet cable to the network port of a PoE camera.
3. Connect the other end of the Ethernet cable to one of the PoE ports on the NVR.
4. Repeat for all four cameras.
5. If you wish to access the NVR via the Reolink App/Client or web browser, connect the NVR's LAN port to your router using an Ethernet cable.

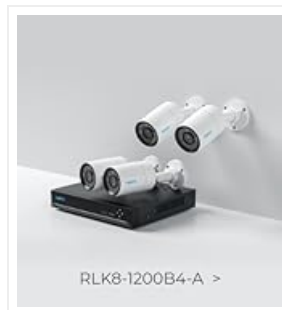


Image: Diagram illustrating the direct PoE connection from cameras to the NVR and the NVR's connection to a router.

3.2. Initial NVR Configuration

You can configure the NVR using a monitor, the Reolink App, or the Reolink Client software.

3.2.1. Using a Monitor

1. Connect the NVR to a monitor or TV using the provided HDMI cable or a VGA cable (not included).
2. Connect the USB mouse to the NVR's USB port.
3. Follow the on-screen instructions to set up the NVR, including creating a password, setting the time zone, and configuring network settings.



Image: Reolink NVR connected to a monitor with a mouse, ready for initial setup.

3.2.2. Using the Reolink App (Mobile)

Download the Reolink App from your device's app store. Ensure your smartphone and NVR are connected to the same network.

1. Launch the Reolink App. The NVR should be automatically detected if on the same network.
2. If not detected, tap the '+' icon to add a device. You can scan the QR code on the NVR, enter the UID, or search for devices in the LAN.
3. Follow the prompts to create a device password and name your device.

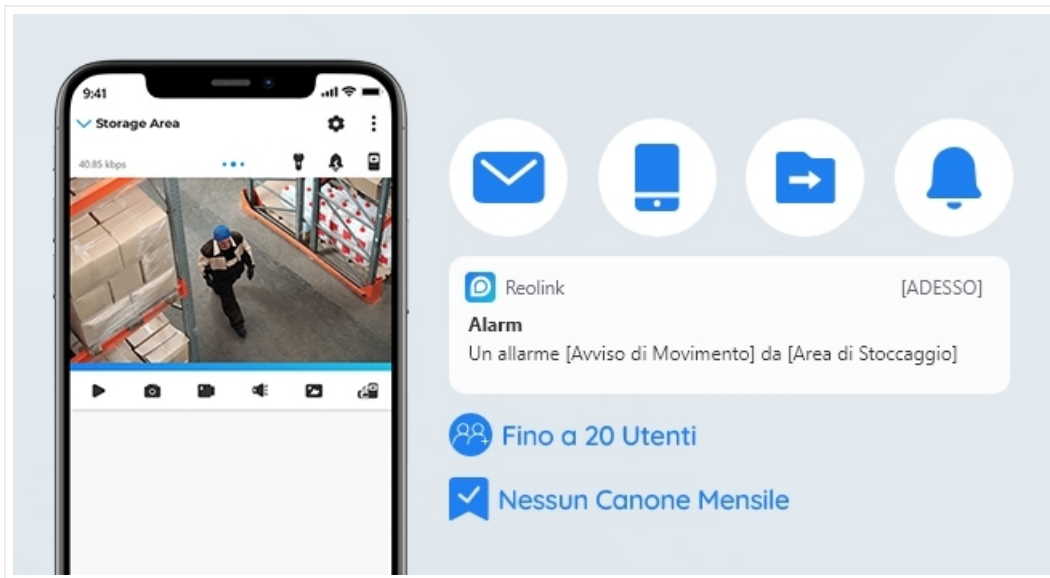


Image: Screenshot of the Reolink App interface showing device management and live view options.

3.2.3. Using the Reolink Client (PC/Mac)

Download and install the Reolink Client software from the official Reolink website. Ensure your computer and NVR are on the same network.

1. Launch the Reolink Client. The NVR should be automatically detected.
2. If not detected, click 'Add Device' and choose to scan devices in LAN, or manually enter the UID/IP address.
3. Set a device password and name for the NVR.

4. OPERATING INSTRUCTIONS

4.1. Live View and Remote Access

Access live feeds from your cameras anytime, anywhere using the Reolink App or Client. This allows you to monitor your property remotely.

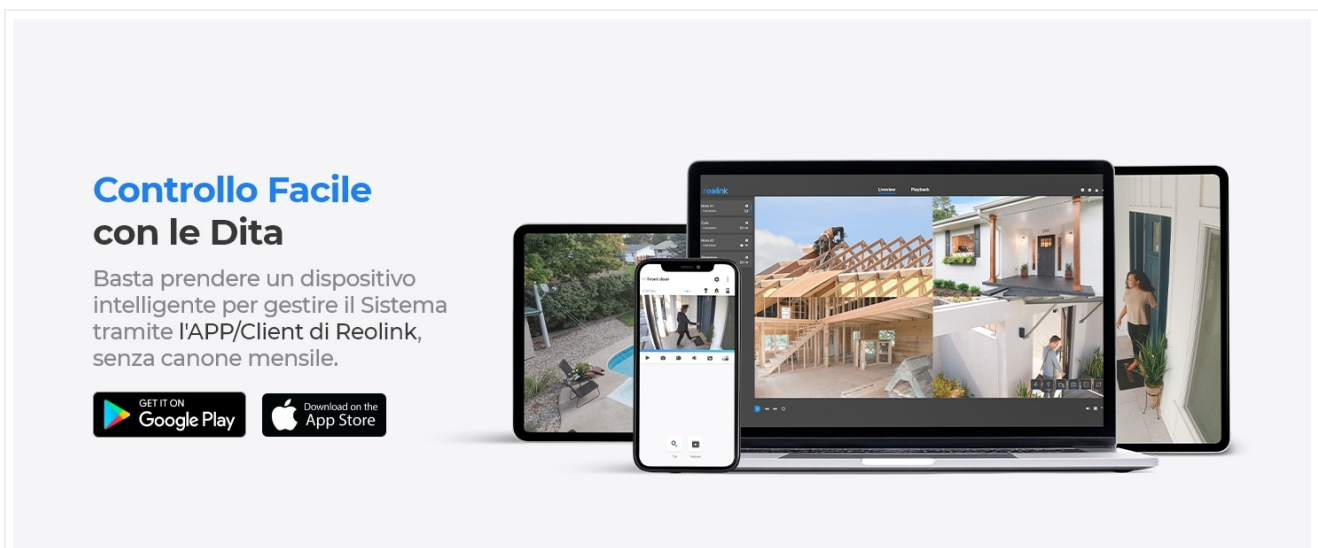


Image: Illustration of remote access to Reolink cameras via smartphone, laptop, and tablet.

4.2. Smart Human/Vehicle Detection

The Reolink RLK8-800B4 system features advanced smart detection capabilities, distinguishing between human and vehicle movements to reduce false alarms.

- Configure detection zones and sensitivity settings in the NVR's menu or via the Reolink App/Client.
- Receive instant push notifications to your phone or email alerts when a person or vehicle is detected.

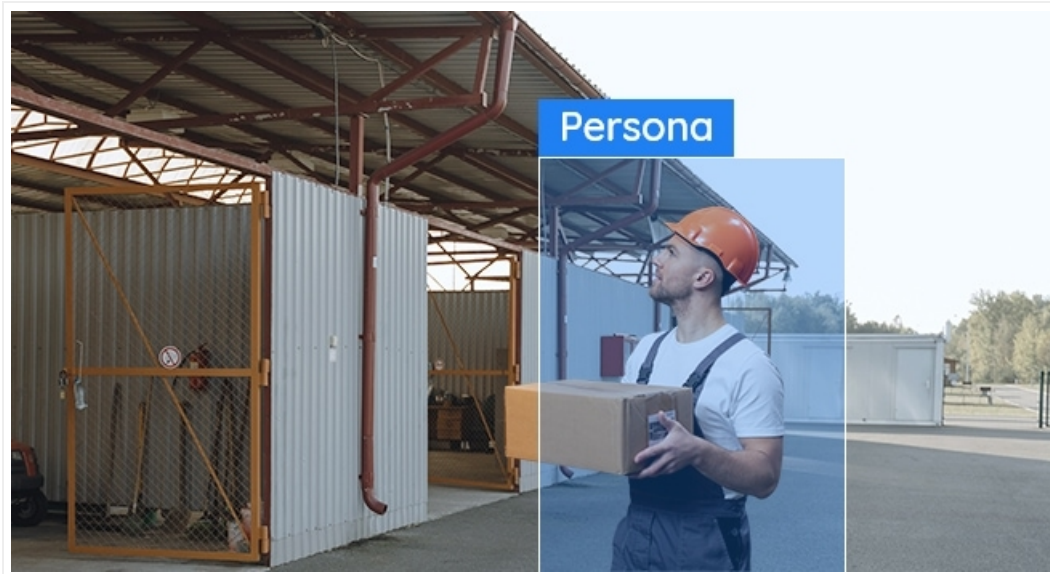


Image: Screenshot showing the smart detection feature identifying a person in the camera's view.

4.3. 4K Ultra HD Video Quality & Night Vision

Experience crystal-clear 4K (3840x2160) resolution, providing sharp details. The cameras also offer reliable infrared night vision up to 30 meters.



Image: Split view demonstrating the clear 4K video quality during both day and night conditions.

4.4. Continuous 24/7 Recording

The NVR supports continuous 24/7 recording, storing footage on the pre-installed 2TB hard drive. Storage can be expanded up to 16TB (8TB internal via SATA, 8TB external via eSATA).

Kit Espandibile, Meno Oneri

Grazie allo spazio scalabile fino a 16TB e alla codifica H.265, i problemi di archiviazione possono essere eliminati.

H.265 Risparmia Più del 50%

H.264



Image: Diagram showing the NVR with its 2TB storage and options for expanding up to 16TB.

4.5. Official Product Videos

Watch these official videos for additional guidance and feature demonstrations.

Video: General overview of the Reolink 4K PoE Surveillance Kit features and benefits.

Video: Demonstration of the smart human and vehicle detection capabilities of the Reolink system.

Video: Step-by-step guide on how to set up your Reolink PoE camera system.

5. MAINTENANCE

- **Regular Cleaning:** Periodically clean the camera lenses with a soft, damp cloth to ensure clear image quality. Avoid abrasive cleaners.
- **Firmware Updates:** Check the Reolink website or app regularly for firmware updates to ensure optimal performance and security.
- **Cable Inspection:** Inspect all cables for wear and tear, especially those exposed to outdoor elements. Replace damaged cables promptly.
- **Hard Drive Health:** Monitor the NVR's hard drive health through the system settings. Consider backing up important footage regularly.



Image: A white outdoor security camera mounted on a wall, demonstrating its weatherproof design suitable for all seasons.

6. TROUBLESHOOTING

- **No Video Feed:** Ensure all power and Ethernet cables are securely connected. Check if the NVR and cameras are powered on. Verify network connectivity.
- **Poor Image Quality:** Clean the camera lens. Check for obstructions in the camera's field of view. Ensure the camera is set to 4K resolution in the NVR settings.
- **No Remote Access:** Verify the NVR is connected to the internet via your router. Check network settings in the NVR and ensure port forwarding (if required by your network setup) is correctly configured.
- **False Alarms:** Adjust the sensitivity and detection zones for human/vehicle detection in the NVR or app settings.
- **NVR Not Recording:** Check the hard drive status in the NVR settings. Ensure it is initialized and has sufficient free space.

7. SPECIFICATIONS

Feature	Detail
Brand	Reolink
Model Number	RLK8-800B4
Connectivity Technology	Wired (PoE)
Video Capture Resolution	4K UHD 2160p (3840x2160)
Special Features	4x 4K 8MP IP67 Waterproof PoE Cameras, Local & Remote Access, 8CH NVR with 2TB HDD, Human & Vehicle Detection, Infrared Night Vision
Number of Channels	8
Storage Capacity	2 TB (expandable to 16 TB)
Power Supply	DC12V or PoE (IEEE 802.3af)
Compatible Operating Systems	Android, Windows, iOS
Camera Description	4K Surveillance Cameras with up to 30m night vision, 3D-DNR, Human/Vehicle Detection
Night Vision	Starlight
Lens	f=4.0mm F=2.0
Night Vision Range	30 Meters
Frame Rate	Mainstream: 2fps - 20fps (default: 20fps); Substream: 4fps - 15fps (default: 10fps)
Recording Mode	Continuous Motion Detection
Total USB Ports	2
Hardware Interface	Ethernet
Lens Type	Fixed
Supported Video Input Type	RJ45
Viewing Angle	87 Degrees
Signal Format	Digital
Optical Sensor Technology	CMOS

Feature	Detail
Country of Origin	China
Color	White
Item Dimensions	26 x 23 x 41 cm

8. WARRANTY AND SUPPORT

Your Reolink RLK8-800B4 Surveillance Kit comes with a **2-year warranty**.

For technical support, troubleshooting, or warranty claims, please visit the official Reolink website or contact their customer service. You can find more information and support resources at the [Reolink Store on Amazon](#).