

## SAECO LF1192228

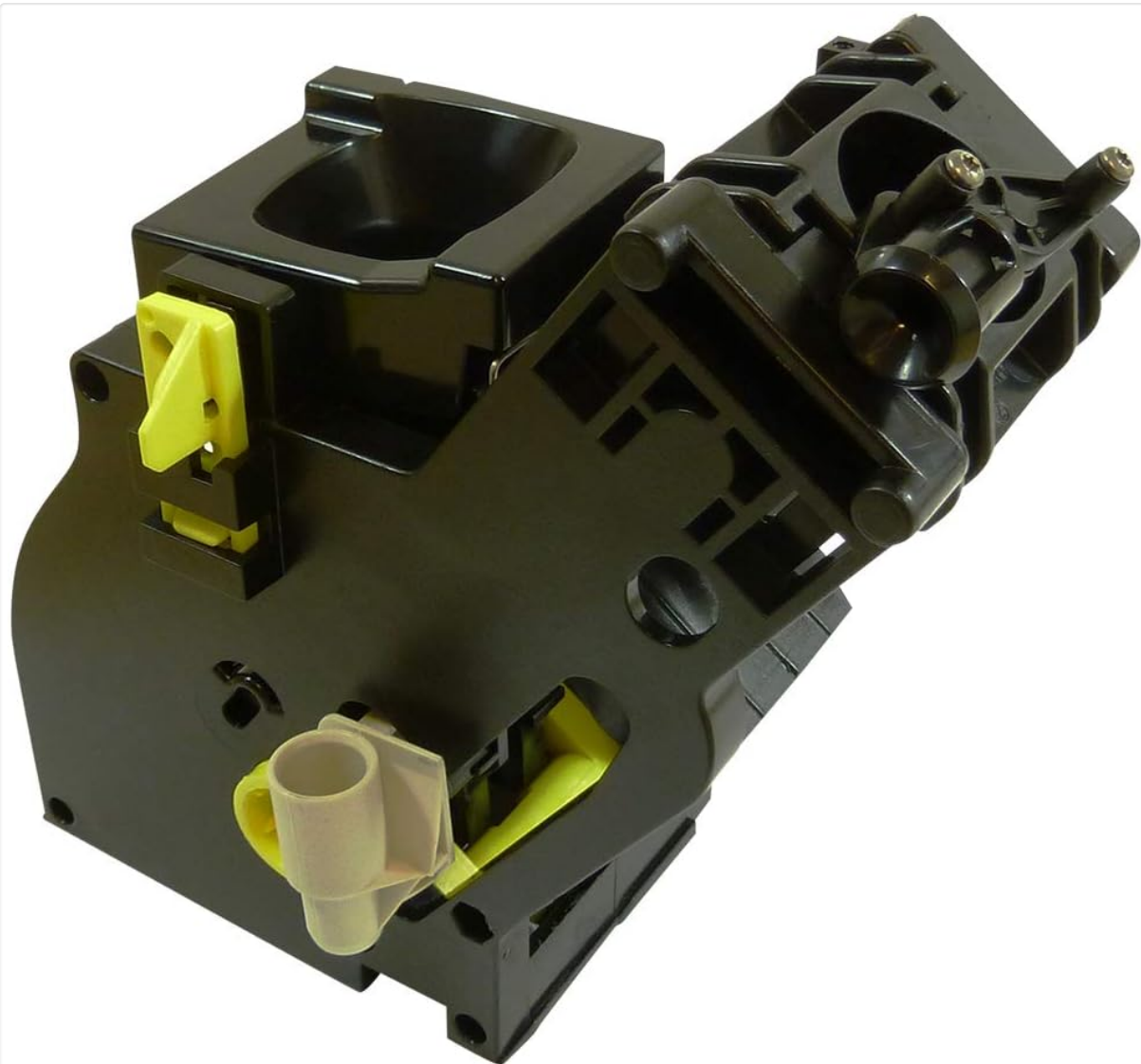
# SAECO Minuto Incanto PicoBaristo Brewing Unit Instruction Manual

Model: LF1192228 (Compatible with Minuto, Incanto, PicoBaristo Series)

## 1. PRODUCT OVERVIEW

This document provides essential instructions for the installation, maintenance, and troubleshooting of your new SAECO brewing unit. This component is designed for specific Philips/Saeco automatic coffee machines to ensure optimal coffee preparation.

The brewing unit is a critical part of your coffee machine, responsible for compressing ground coffee and extracting espresso. This particular unit is a new generation 8GR 5BAR model with a reinforced funnel, ensuring durability and consistent performance.



**Figure 1.1:** Front view of the SAECO Minuto Incanto PicoBaristo Brewing Unit. This image displays the main body of the brewing unit, highlighting its robust plastic construction and the integrated funnel for coffee grounds.

## 1.1 Compatible Models

This brewing unit is compatible with the following Philips/Saeco coffee machine series:

- **Minuto Series:** HD8661/01-09, HD8662/01-09, HD8664/09, HD8665/09, HD8760, HD8761, HD8762, HD8763, HD8764, HD8772, HD8773, HD8775, HD8780, HD8861, HD8862, HD8865, HD8867
- **Incanto Series:** HD8911/01-09, HD8912, HD8913, HD8914/01-09, HD8915/01-77, HD8916/01-19, HD8917/01-47, HD8918/09-41, HD8919/51-59
- **PicoBaristo Series:** HD8925/01-09, HD8927, HD8928

## 2. SAFETY INFORMATION

Please read and understand all safety instructions before handling or installing the brewing unit. Failure to follow these instructions may result in injury or damage to your appliance.

- **Power Disconnection:** Always unplug your coffee machine from the power outlet before attempting any installation, removal, or maintenance of the brewing unit.
- **Hot Surfaces:** Allow the coffee machine to cool down completely before handling internal components, as hot water and steam can cause burns.
- **Handle with Care:** The brewing unit contains moving parts. Handle it carefully to avoid pinching fingers

or damaging components.

- **Original Parts:** Use only genuine or approved replacement parts to ensure proper function and safety.
- **Children and Pets:** Keep the brewing unit and tools out of reach of children and pets.

### 3. SETUP AND INSTALLATION

---

This section outlines the general procedure for replacing the brewing unit in your compatible Philips/Saeco coffee machine. Refer to your specific coffee machine's user manual for detailed instructions on accessing the brewing unit compartment.

#### 1. Prepare the Machine:

- Ensure the coffee machine is turned off and unplugged from the main power supply.
- Allow the machine to cool down if it has recently been in use.
- Remove the drip tray and coffee grounds container.

#### 2. Access the Brewing Unit Compartment:

- Open the service door on your coffee machine. The location of this door varies by model (typically on the side or front).

#### 3. Remove the Old Brewing Unit:

- Locate the 'PUSH' button or lever on the old brewing unit.
- Press the 'PUSH' button (if present) and pull the brewing unit towards you to slide it out of the machine.
- If the unit is stuck, gently wiggle it while pulling. Do not force it.

#### 4. Install the New Brewing Unit:

- Ensure the new brewing unit is in the correct position for insertion (usually indicated by arrows or alignment marks). The lever should be in the correct position (often fully extended or retracted, depending on the model).
- Slide the new brewing unit into the compartment along the guide rails until it clicks into place. You should hear an audible click, indicating it is securely locked.
- Do not force the unit. If it does not slide in easily, check for obstructions or incorrect alignment.

#### 5. Final Steps:

- Close the service door.
- Reinsert the drip tray and coffee grounds container.
- Plug the coffee machine back into the power outlet and turn it on.



**Figure 3.1:** Side view of the brewing unit, illustrating the reinforced funnel and the general shape for proper insertion into the coffee machine. Note the yellow components which are often part of the locking or moving mechanism.



**Figure 3.2:** Rear view of the brewing unit, showing the 'PUSH' indicator and other structural elements. This view is important for understanding how the unit locks and unlocks within the coffee machine compartment.

## 4. OPERATING PRINCIPLES

Once correctly installed, the brewing unit functions automatically as part of your coffee machine's brewing cycle. It performs the following key actions:

- **Grinding and Dosing:** After coffee beans are ground (if applicable), the brewing unit receives the precise dose of ground coffee into its chamber.
- **Compaction:** The unit then compresses the ground coffee into a compact puck, ensuring optimal water flow and extraction.
- **Brewing:** Hot water is forced through the coffee puck under pressure, extracting the espresso.
- **Disposal:** After brewing, the unit ejects the spent coffee puck into the grounds container.

No direct user operation is required for the brewing unit itself once installed. Its operation is controlled by the coffee machine's internal programming.

## 5. MAINTENANCE AND CLEANING

Regular cleaning of the brewing unit is crucial for maintaining coffee quality and extending the lifespan of your coffee machine. Perform these steps weekly or as recommended by your coffee machine's manual.

**1. Remove the Brewing Unit:**

- Turn off and unplug the coffee machine.
- Open the service door and press the 'PUSH' button to remove the brewing unit as described in Section 3.

**2. Rinse with Water:**

- Rinse the brewing unit thoroughly under lukewarm running water.
- Do not use any cleaning agents, detergents, or abrasive materials, as these can damage the unit.
- Clean the upper filter and the coffee funnel area, ensuring no coffee residue remains.

**3. Clean the Internal Compartment:**

- While the brewing unit is out, wipe the inside of the brewing unit compartment with a damp cloth to remove any coffee grounds or residue.

**4. Air Dry:**

- Allow the brewing unit to air dry completely before reinserting it into the machine. This prevents mold growth and ensures proper function.

**5. Lubrication (Optional, refer to machine manual):**

- Some coffee machine manufacturers recommend lubricating certain moving parts of the brewing unit periodically with food-grade silicone grease. Consult your coffee machine's specific manual for details on lubrication frequency and points.

## 6. TROUBLESHOOTING

---

If you experience issues with your coffee machine after installing the new brewing unit, consider the following common troubleshooting steps:

• **Brewing Unit Not Inserting/Removing Easily:**

- Ensure the coffee machine is off and unplugged.
- Check for any obstructions in the compartment.
- Verify the brewing unit's lever is in the correct position for insertion/removal (often fully extended or retracted).
- Do not force the unit; gentle wiggling may help.

• **Coffee Not Brewing or Weak Coffee:**

- Ensure the brewing unit is correctly seated and locked in place.
- Check if the coffee funnel is clogged. Clean the brewing unit thoroughly.
- Verify that the water tank is filled and correctly inserted.
- Check the coffee grind setting on your machine; a grind that is too coarse can lead to weak coffee.

• **Water Leaking from Machine:**

- Ensure the brewing unit is correctly installed and sealed.
- Inspect the O-rings on the brewing unit for any damage or displacement.
- If the issue persists, consult your coffee machine's specific troubleshooting guide or contact customer support.

For issues not resolved by these steps, refer to the comprehensive troubleshooting section of your specific



Philips/Saeco coffee machine's user manual or contact the manufacturer's customer support.

## 7. SPECIFICATIONS

Model Number	LF1192228
Brand	SAECO (Compatible with Philips/Saeco)
Compatible Series	Minuto (HD86, HD87, HD88, HD89), Incanto, PicoBaristo
Material	Durable Plastic
Color	Black
Dimensions (L x W x H)	18 x 9 x 18 cm (approximately)
Weight	590 grams (approximately)
Capacity	100 Grams (referring to coffee grounds capacity)
Special Feature	Reinforced Funnel, 8GR 5BAR New Generation

## 8. WARRANTY AND SUPPORT

This brewing unit comes with a manufacturer's warranty. Please refer to the warranty information provided with your purchase for specific terms and conditions, including coverage duration and claim procedures.

For technical support, installation assistance, or warranty claims related to this brewing unit, it is recommended to contact the seller or the manufacturer of your specific Philips/Saeco coffee machine. They can provide guidance tailored to your appliance model.

Keep your proof of purchase for warranty purposes.