

homdiy HD-LS1003BSS76

homdiy Cabinet Handles Instruction Manual

Model: HD-LS1003BSS76

INTRODUCTION

This manual provides comprehensive instructions for the installation, operation, and maintenance of your homdiy Solid Zinc Alloy Cabinet Handles. Please read these instructions carefully before beginning installation to ensure proper function and longevity of the product.



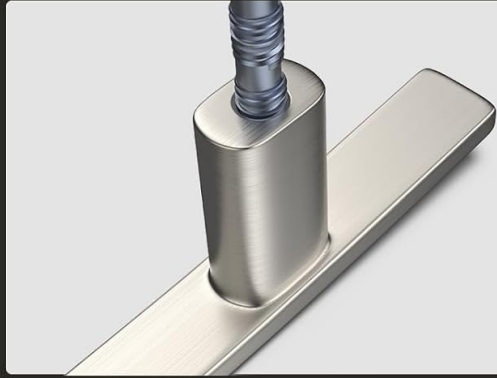
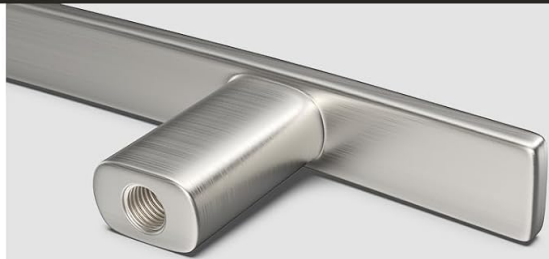
Image: Two homdiy brushed satin nickel cabinet handles installed on a white cabinet.

PRODUCT FEATURES

- **Material:** Constructed from durable solid zinc alloy for strength and longevity.
- **Finish:** Modern brushed satin nickel finish, designed to resist rust and corrosion.
- **Design:** Contemporary arch design suitable for various interior styles.
- **Anti-Fingerprint:** Surface treatment to minimize visible fingerprints.
- **Easy Installation:** Designed for straightforward mounting on cabinets, drawers, and wardrobes.



Tight Connection



Deep Hole Thread



Anti-Fingerprint

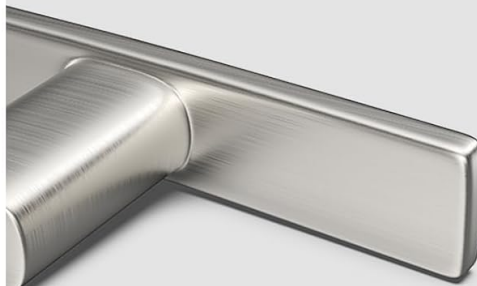


Image: Detailed view of handle construction highlighting tight connection, deep hole thread, and anti-fingerprint surface.

PACKAGE CONTENTS

Each package of homdiy cabinet handles includes the following components:

- Cabinet Handles (Quantity as per pack size, e.g., 20 handles)
- Mounting Screws: Two 1-inch (25mm) screws per handle.
- Mounting Screws: Two 1.77-inch (45mm) screws per handle.

Each handle is individually wrapped to prevent scratches during transit. The package is designed to protect contents from damage.



4 Screws Per Handle (1 inch & 1.77 inch) Please contact us if you need other size of screws



Every cabinet pull is individually wrapped and bagged to prevent scratches



Each package is carefully packed to avoid damage during transportation

Image: Included screws and individual packaging for a cabinet pull.

INSTALLATION INSTRUCTIONS

Tools Required:

- Drill
- Drill bit (appropriate size for screws)
- Measuring tape or ruler
- Pencil or marker
- Screwdriver (Phillips head recommended)

Step-by-Step Guide:

1. **Remove Old Pulls (if applicable):** If replacing existing hardware, use a screwdriver to remove the old cabinet pulls.
2. **Measure and Mark:** Determine the desired location for the new handle. Use a measuring tape and pencil to mark the two hole centers on the cabinet door or drawer front. For this model, the hole center spacing is 3 inches (76mm). Ensure marks are level and accurately spaced.
3. **Drill Holes:** Carefully drill pilot holes at the marked locations. Use a drill bit slightly smaller than the screw diameter to prevent wood splitting. Drill straight through the material.

4. **Install New Handle:** Align the new homdiy cabinet handle with the drilled holes. Insert the chosen screws (1-inch or 1.77-inch, depending on material thickness) from the inside of the cabinet door or drawer. Tighten the screws with a screwdriver until the handle is secure. Avoid over-tightening to prevent damage.



Image: Visual guide for cabinet handle installation steps.

Note on Screws: Two lengths of screws are provided (1 inch and 1.77 inches) to accommodate various cabinet and drawer thicknesses. If these lengths are not suitable for your specific application, please contact homdiy customer service for assistance with alternative screw sizes. The machine screw metric size is M4.

Dimensions

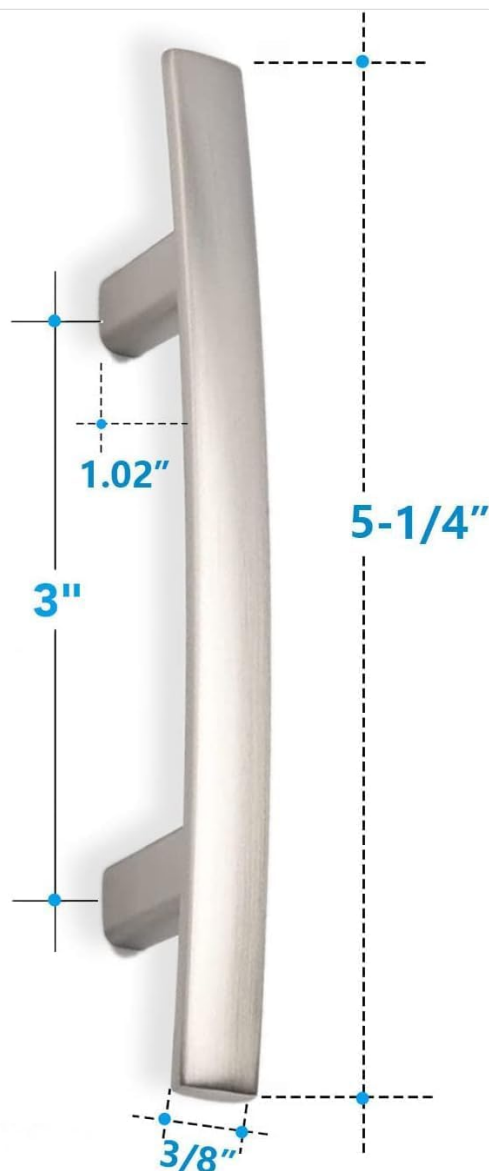
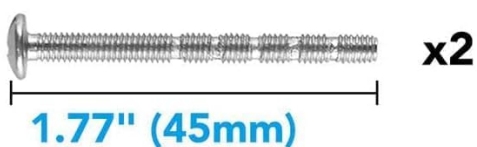
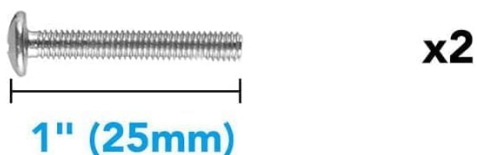
Total Length: 5-1/4" (133mm)

Hole Centers: 3" (76mm)

Projection: 1.02" (26mm)

Diameter: 3/8" (9.5mm)

Screw Length



If you are not satisfied with our products, please contact us in time. We will give you a satisfactory reply.

Image: Detailed dimensions of the cabinet handle and included screws.

OPERATING INSTRUCTIONS

These cabinet handles are designed for simple and reliable operation. To open or close a cabinet door or drawer, grasp the handle firmly and apply gentle, consistent pressure in the desired direction. The solid zinc alloy construction ensures a comfortable and secure grip.

CARE AND MAINTENANCE

To maintain the appearance and functionality of your homdiy cabinet handles, follow these simple care guidelines:

- **Cleaning:** Wipe the handles regularly with a soft, damp cloth. For stubborn marks, a mild soap solution can be used, followed by rinsing with clean water and drying thoroughly with a soft cloth.
- **Avoid Harsh Chemicals:** Do not use abrasive cleaners, ammonia-based products, or harsh chemicals, as these can damage the brushed satin nickel finish.
- **Periodic Check:** Periodically check the tightness of the mounting screws. If a handle feels loose, gently tighten the screws with a screwdriver.

TROUBLESHOOTING

- **Handle is Loose:** If a handle becomes loose, gently tighten the mounting screws from the inside of the cabinet or drawer. Do not over-tighten.
- **Screws are Too Long/Short:** The package includes two common screw lengths (1 inch and 1.77 inches). If neither is suitable for your cabinet thickness, please contact homdiy customer support for alternative options.
- **Difficulty Drilling Holes:** Ensure you are using an appropriate drill bit for your cabinet material. Start with a smaller pilot hole if necessary.

SPECIFICATIONS

Attribute	Detail
Brand	homdiy
Model Number	HD-LS1003BSS76
Material	Solid Zinc Alloy
Color/Finish	Brushed Satin Nickel
Hole Center Spacing	3 inches (76mm)
Overall Length	5-1/4 inches (133mm)
Projection	1.02 inches (26mm)
Diameter	3/8 inch (9.5mm)

Included Screws	1 inch (25mm) and 1.77 inch (45mm)
Item Weight	Approximately 1 pound (for the pack)
Indoor/Outdoor Usage	Indoor, Outdoor

WARRANTY AND SUPPORT

homdiy is committed to providing high-quality products. If you encounter any issues or are not satisfied with your purchase, please contact homdiy customer service. We offer a refund or replacement for defective or unsatisfactory items. Our customer service team is available to patiently answer any questions you may have regarding the product or its installation.

For support, please refer to the contact information provided with your purchase or visit the official homdiy website.