

Manuals+

[Q & A](#) | [Deep Search](#) | [Upload](#)

manuals.plus /

- › [Linklike](#) /
- › [Linklike Classic 2 Wired Earbuds Instruction Manual](#)

Linklike Linklike Classic 2

Linklike Classic 2 Wired Earbuds Instruction Manual

Model: Linklike Classic 2 | Brand: Linklike

INTRODUCTION

Thank you for choosing Linklike Classic 2 Wired Earbuds. This manual provides detailed instructions for setting up, operating, maintaining, and troubleshooting your new earbuds. Please read this manual thoroughly before use to ensure optimal performance and longevity of your product.

PACKAGE CONTENTS

Upon opening your Linklike Classic 2 Wired Earbuds package, you should find the following items:

- Linklike Classic 2 Wired Earbuds with 3.5mm Jack
- Multiple sizes of silicone ear tips (including ear hooks for secure fit)
- Storage Pouch
- User Manual (this document)

Your browser does not support the video tag.

Video: Unboxing Overview - This video demonstrates the unboxing process and shows the contents included with your Linklike Classic 2 Wired Earbuds, including the earbuds, various ear tips, and the storage pouch.

PRODUCT OVERVIEW

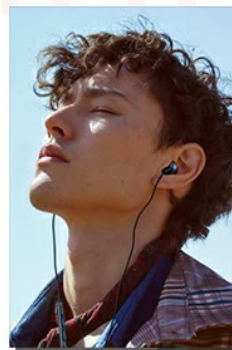
The Linklike Classic 2 Wired Earbuds are designed for high-fidelity audio with enhanced bass and clear vocal transmission. Key features include:

- **QUAD Dynamic Drive:** Industry-leading 14.2mm driver units for superior clarity and acoustic performance with enhanced bass.
- **Integrated Microphone:** Innovative MEMS microphone designed to reduce background static for clear calls.
- **Inline Controls:** Convenient buttons for volume adjustment, music playback (play/pause, next/previous track), and call management.
- **3.5mm Jack:** Universal compatibility with most devices featuring a 3.5mm audio input.

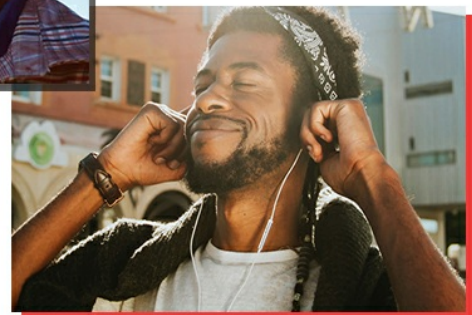
- **Lightweight Design:** Ergonomically designed for comfort during extended use.
- **Durable Cable:** Tangle-free cable for ease of use and longevity.



Image: QUAD Dynamic Drivers - This diagram illustrates the internal structure of the earbuds, highlighting the 14.2mm QUAD Dynamic Drive units responsible for superior audio clarity and powerful bass.



Linklike earphones as your latest style accessory everywhere, from relaxed beach days and leisurely weekend afternoon to exhilarating hikes and warm call moment. Whatever your scene, Linklike will never let you down. With its classy vibes, Linklike can be the perfect gift for music lovers, friends, family.



**Linklike Listening Never Felt
Never Sounded so Incredible**

Image: Earbuds in Use - This image shows the earbuds connected to a smartphone, emphasizing their comfortable fit, durable cable, and lightweight design for an immersive listening experience.



Wired Earbuds

Listen, Chat And Have Fun Together.

Enjoy being at the concert site all the time. Deep bass and clear instrument sounds and vocals, with the Linklike earbuds, your audio gets from your device to your ears in as pure.

Choose Linklike

Your Earbuds, Cat's Toy

Earbuds wire made of bulletproof vest material
Resist the cat's chewing on the wire
Always maintain incredible sound
and stable connection



Image: Clear Vocal Transmission - A woman is shown using the earbuds, demonstrating the effectiveness of the MEMS microphone in transmitting clear vocals by eliminating background static during calls.

Clear Call & Smart Control

More convenient when working
remotely, video conferencing, etc.

Any questions can be answered faster at support.us@linklike-audio.com.

Image: Sensitive Control Buttons - A detailed view of the inline remote control, showing buttons for volume up, volume down, and a multi-function button for music and call control, along with the MEMS microphone.

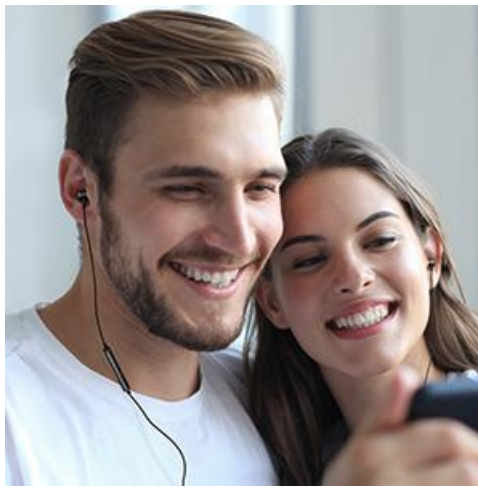


Image: Universal Compatibility - This image illustrates the wide compatibility of the earbuds with various devices such as desktops, laptops, tablets, and smartphones, all connecting via the standard 3.5mm audio jack.

SETUP

1. Choosing the Right Ear Tips

For optimal sound quality and comfort, select the ear tips that best fit your ears. The package includes various sizes and types, including those with ear hooks for a more secure fit, ideal for active use.

Feel The Music At The Scene

Good sound quality = Clear and powerful bass +
Clear instrument sounds and vocals



Image: Ear Tips and Fit - This image displays the earbuds along with various silicone ear tips, including those with ear hooks, demonstrating how to achieve a comfortable and secure fit for different ear shapes.

2. Connecting to Your Device

The Linklike Classic 2 Earbuds feature a universal 3.5mm audio jack. Simply plug the L-shaped jack into the 3.5mm audio port of your smartphone, tablet, laptop, or any other compatible audio device.

Compatible With Any Device

Compatible with all 3.5mm audio device



Desktop



Laptop



Tablet



Phones



Image: Connecting the 3.5mm Jack - The L-shaped 3.5mm audio jack is shown connected to a smartphone, illustrating the simple plug-and-play setup for the earbuds.

OPERATING INSTRUCTIONS

The inline remote control allows for easy management of your audio and calls:

- **Play/Pause:** Press the center button once.
- **Next Track:** Press the center button twice quickly.
- **Previous Track:** Press the center button three times quickly.
- **Volume Up:** Press the '+' button.

- **Volume Down:** Press the '-' button.
- **Answer/End Call:** Press the center button once during an incoming call or an active call.
- **Reject Call:** Long press the center button during an incoming call.
- **Activate Voice Assistant:** Long press and hold the center button.

Your browser does not support the video tag.

Video: Inline Control Demonstration - This video demonstrates how to use the inline remote control for various functions such as playing/pausing music, adjusting volume, skipping tracks, and managing calls.

Your browser does not support the video tag.

Video: Pure Bass Earbuds With Volume Control - This video highlights the audio quality, particularly the bass, and demonstrates the volume control functionality of the earbuds.

MAINTENANCE

To ensure the longevity and optimal performance of your Linklike Classic 2 Earbuds, follow these maintenance guidelines:

- **Cleaning:** Regularly clean the ear tips with a soft, dry cloth. For deeper cleaning, remove the silicone tips and wash them with mild soap and water, ensuring they are completely dry before reattaching.
- **Cable Care:** Avoid sharp bends or excessive pulling on the cable to prevent damage. The tangle-free design helps maintain its integrity.
- **Storage:** When not in use, store your earbuds in the provided storage pouch to protect them from dust, dirt, and tangling.
- **Water Resistance:** The earbuds are rated as waterproof. However, avoid prolonged submersion in water.

TROUBLESHOOTING

If you encounter any issues with your Linklike Classic 2 Earbuds, please refer to the following common solutions:

- **No Sound:**
 - Ensure the 3.5mm jack is fully inserted into your device's audio port.
 - Check your device's volume settings.
 - Test the earbuds with another device to rule out device-specific issues.
- **Microphone Not Working:**
 - Ensure the microphone is not obstructed.
 - Check your device's microphone input settings.
 - Test the microphone with another device or application.
- **Poor Sound Quality/Lack of Bass:**
 - Ensure the ear tips are properly seated in your ear canal to create a good seal. Try different sized ear tips for a better fit.
 - Clean any debris from the earbud grilles.
- **Buttons Not Responding:**

- Ensure the connection is secure.
- Some older devices or specific applications may have limited compatibility with inline controls.

If the problem persists, please contact Linklike customer support for further assistance.

SPECIFICATIONS

Feature	Detail
Model Name	Linklike Classic 2
Connectivity Technology	Wired
Headphones Jack	3.5 mm Jack
Audio Driver Type	Dynamic Driver (QUAD Dynamic Drive, 14.2mm)
Control Type	Volume Control, Music/Call Control
Microphone	MEMS Acoustic Noise Reduction Microphone
Noise Control Features	Passive Noise Isolation
Cable Feature	Tangle Free, Kevlar reinforced cord
Material	Silicone (ear tips)
Item Weight	13.3 Grams (0.469 ounces)
Product Dimensions	47.24 x 0.66 x 0.63 inches
Water Resistance Level	Waterproof
Compatible Devices	Most devices with a 3.5 mm audio input port

Your browser does not support the video tag.

Video: Durability Testing - This video showcases various durability tests performed on the Linklike Classic 2 Earbuds, including wire swing tests, wire pull tests (up to 300N), and plug insertion/extraction tests (10,000 times), demonstrating the robust construction and reinforced components like the Kevlar cord and L-shaped jack.

WARRANTY AND SUPPORT

Linklike is committed to customer satisfaction. If you experience any product issues, please contact us via Amazon at any time. We offer:

- Fast Reply & Free Replacement
- 24 Hours Online Customer Service
- No Need to Return for replacements

For support, please message us through Amazon or refer to the contact information provided in your product packaging.



Image: Service Information - This image outlines the customer service commitments, including fast delivery, 24-hour online support, free replacement without return, and accurate product descriptions.