

Paulmann 70929

Paulmann 70929 LED Gutta Pendant Light Instruction Manual

Model: 70929 | Brand: Paulmann

1. INTRODUCTION

This manual provides essential information for the safe and efficient installation, operation, and maintenance of your Paulmann 70929 LED Gutta Pendant Light. The Gutta pendant light features a delicate and subtle design, providing a focused light effect. Its high-quality textile cable allows for individual length adjustment. Please read these instructions carefully before installation and retain them for future reference.

Safety Information

- Always disconnect power before installation, maintenance, or cleaning.
- Installation must be performed by a qualified electrician in accordance with local wiring regulations.
- Do not modify the product in any way.
- Ensure the mounting surface can support the weight of the fixture.
- This product is designed for indoor use only (IP20 rating).
- The LED light source is integrated and not replaceable by the user.

2. PACKAGE CONTENTS

Verify that all components are present and undamaged before proceeding with installation.

- Paulmann 70929 LED Gutta Pendant Light fixture (with integrated LED)
- Mounting hardware (screws, anchors)
- Installation instructions (this manual)

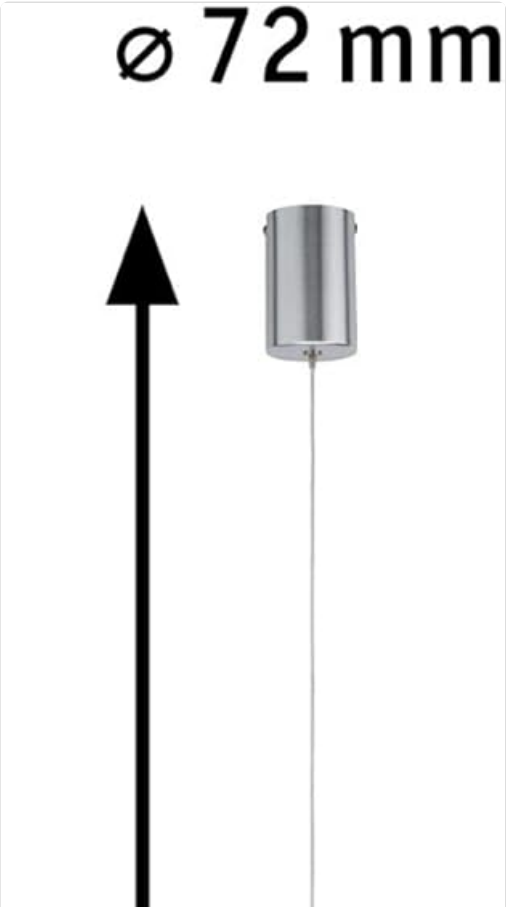




Image 1: Paulmann 70929 LED Gutta Pendant Light. This image shows the complete pendant light assembly, including the ceiling canopy, adjustable textile cable, and the conical brushed aluminum lamp head.

3. SPECIFICATIONS

Brand	Paulmann
Model Number	70929
Dimensions (L x W x H)	7.2 x 7.2 x 150 cm (adjustable height)
Weight	428 g
Material	Metal (Brushed Aluminum)
Input Voltage	230 Volts (AC)
Power Consumption	7 Watts
Luminous Flux	600 lm
Color Temperature	2700 Kelvin (Warm White)
Dimmable	No
Average Lifespan	30,000 Hours
IP Rating	IP20
Installation Type	Ceiling Mount
Light Source	Integrated LED (not user-replaceable)



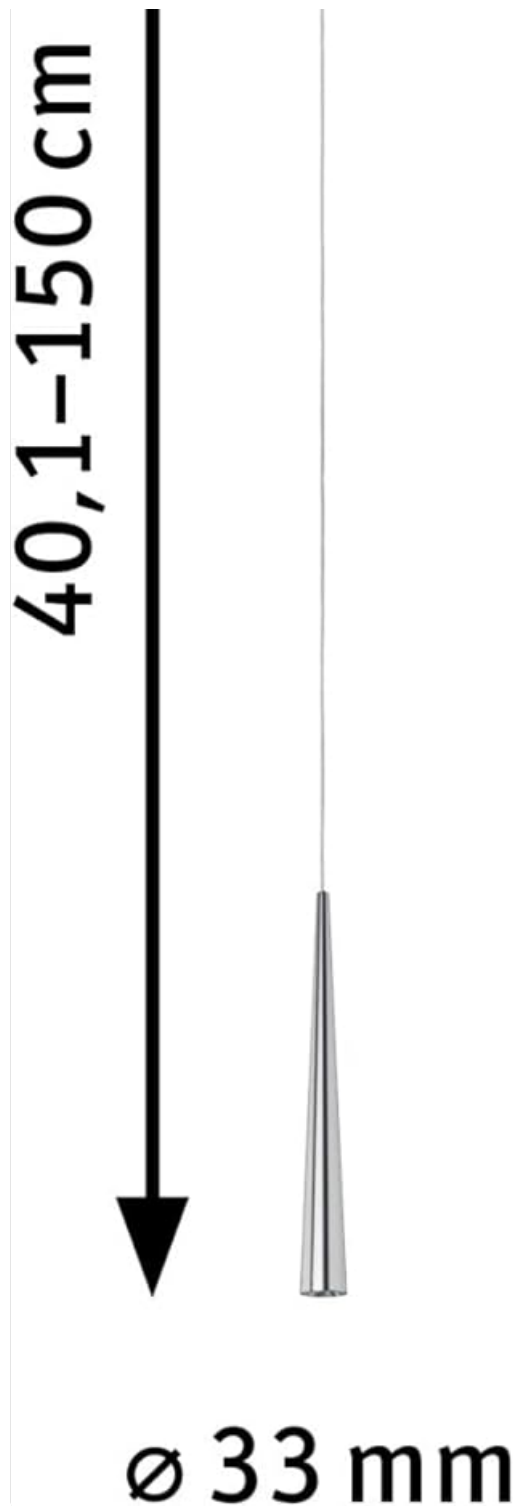


Image 2: Dimensions of the Paulmann 70929 LED Gutta Pendant Light. This diagram illustrates the key measurements: a ceiling canopy diameter of 72mm, a lamp head diameter of 33mm, and an adjustable suspension length ranging from 40.1cm to 150cm.

4. SETUP AND INSTALLATION

Important: Ensure the main power supply is switched off at the circuit breaker before beginning installation.

1. Prepare the Installation Area:

Identify the desired mounting location on the ceiling. Ensure there is adequate structural support and access to electrical wiring. Mark the drilling points for the mounting bracket using the fixture's canopy as a template.

2. Mount the Bracket:

Drill holes at the marked points. Insert appropriate wall anchors if necessary. Secure the mounting bracket to the ceiling using the provided screws.

3. **Connect Electrical Wiring:**

Carefully connect the household electrical wires to the corresponding terminals on the pendant light fixture. Typically, this involves connecting live (L), neutral (N), and ground (E/GND) wires. Ensure all connections are secure and properly insulated. Consult a qualified electrician if you are unsure about wiring procedures.

4. **Adjust Cable Length:**

Adjust the length of the textile cable to your desired height. The cable length can be adjusted within the ceiling canopy. Once adjusted, secure the cable firmly.

5. **Attach the Fixture:**

Carefully attach the pendant light fixture to the mounted bracket, ensuring it is securely fastened. Make sure no wires are pinched during this process.

6. **Restore Power:**

Once the installation is complete and all connections are secure, restore power at the circuit breaker. Test the light fixture.





Image 3: The Paulmann 70929 LED Gutta Pendant Light installed in a modern living space. The image shows the pendant light hanging above a small side table, providing focused illumination. Other elements in the room include a white armchair, a floor lamp, and decorative storage baskets.

5. OPERATING INSTRUCTIONS

The Paulmann 70929 LED Gutta Pendant Light is designed for simple operation.

- **Turning On/Off:** Control the light using a standard wall switch connected to the fixture's power supply.
- **Light Output:** The integrated LED provides a warm white light at 2700 Kelvin with a luminous flux of 600 lumens.
- **Non-Dimmable:** This fixture is not dimmable. Do not connect it to a dimmer switch, as this may damage the LED driver or the fixture itself.



Image 4: Close-up view of the Paulmann 70929 LED Gutta Pendant Light's lamp head. The brushed aluminum finish is visible, and the integrated LED emits a warm, focused light from the conical tip.

6. MAINTENANCE

Regular cleaning and proper care will help maintain the appearance and performance of your pendant light.

- **Cleaning:**
Before cleaning, ensure the power supply is disconnected. Wipe the fixture with a soft, dry, or slightly damp cloth. Do not use abrasive cleaners, solvents, or harsh chemicals, as these can damage the finish.
- **LED Light Source:**
The LED light source is integrated and has a long average lifespan of 30,000 hours. It is not designed to be replaced by the user. If the LED fails, the entire fixture may need to be replaced.

7. TROUBLESHOOTING

If you encounter issues with your Paulmann 70929 LED Gutta Pendant Light, refer to the following common problems and solutions:

Problem	Possible Cause	Solution
Light does not turn on.	<ul style="list-style-type: none">◦ No power supply.◦ Loose electrical connection.◦ Faulty wall switch.◦ Integrated LED failure.	<ul style="list-style-type: none">◦ Check the circuit breaker and wall switch.◦ Ensure all electrical connections are secure (power off before checking).◦ Test the wall switch.◦ If the LED has failed prematurely, contact Paulmann customer support.
Light flickers.	<ul style="list-style-type: none">◦ Loose electrical connection.◦ Incompatible dimmer switch (if mistakenly installed).	<ul style="list-style-type: none">◦ Check electrical connections (power off before checking).◦ Ensure the fixture is not connected to a dimmer switch, as it is non-dimmable.

If the problem persists after attempting these solutions, please contact Paulmann customer support or a qualified electrician.

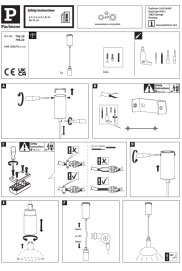
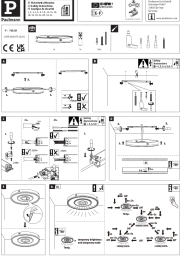
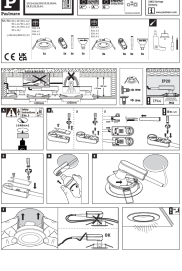
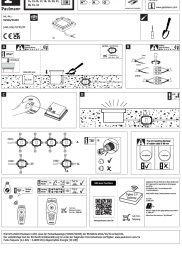
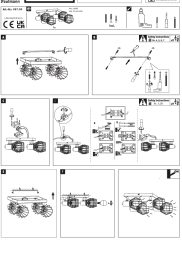

8. WARRANTY AND SUPPORT

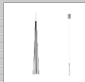



Paulmann products are manufactured to high-quality standards. For information regarding warranty terms and conditions, please refer to the documentation provided with your purchase or visit the official Paulmann website. For technical support, spare parts, or further assistance, please contact Paulmann customer service:

- **Website:** www.paulmann.com
- Refer to your regional Paulmann contact information for local support.



Related Documents - 70929

	<p>Paulmann Runa Pendant Light Installation and Safety Guide (Models 795.19, 795.22)</p> <p>Comprehensive installation and safety guide for the Paulmann Runa pendant light (models 795.19, 795.22). Includes step-by-step assembly instructions, safety warnings, and information on energy efficiency and component replaceability.</p>
	<p>Paulmann Spaceglow Four Ceiling Lamp Installation and Operation Guide</p> <p>Comprehensive guide for installing and operating the Paulmann Spaceglow Four ceiling lamp (Model 710.39). Includes safety instructions, wiring, remote control functions, component replaceability, and conformity information.</p>
	<p>Paulmann LED Recessed Luminaire Installation and Safety Guide</p> <p>Comprehensive guide for Paulmann LED recessed luminaires, covering installation, safety instructions, component replaceability, and energy efficiency information. Includes product numbers 934.39 through 934.45.</p>
	<p>Paulmann 94504/94595 LED Ground Recessed Luminaire Smart Home Zigbee Installation Guide</p> <p>Detailed installation and safety instructions for the Paulmann 94504/94595 LED ground recessed luminaire. Features Smart Home Zigbee 3.0 connectivity, IP67 rating, and 230V power. Includes multilingual guidance on installation, replaceability, and disposal.</p>
	<p>Paulmann Lanka Spot Light Installation Guide</p> <p>Comprehensive installation instructions and safety guidelines for the Paulmann Lanka spot light fixture (Article No. 667.69). Covers electrical connections, component replaceability, and technical specifications for safe and proper use.</p>
	<p>Paulmann Turnal Coin 3SD ABL LED Luminaire Installation and Safety Guide</p> <p>Comprehensive guide for the Paulmann Turnal Coin 3SD ABL LED luminaire, covering safety instructions, assembly, and usage. Includes detailed textual descriptions of diagrams and multilingual information.</p>

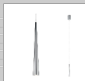



Artikelnummer	70929	SKU Nummer	4000870709290			
Titel	Suspension LED Gutta 1x7W Alu brossé 230V Mtal					
Hersteller	Paulmann					
données ampoules						
Nombre de points lumineux	01					
Nombre d'équipement	1x					
Température de couleur en K	2700 K					
Classe de flux	30 000 lm					
Équivalence lampes à incandescence	40 W					
Capacité de flux lumineux	300 lm					
Le équipement	7 W					
Le équipement	1x 1x7 W					
Dimensions						
Dimensions emballé	15 x 33,5 x 33,5 cm					
Ø du verre	22 mm					
Longueur de la suspension	45 x 130 cm					
Ø du rail	42 mm					
Ø	72 mm					
Alimentation						
Tension d'alimentation	230 V					
détails du produit						
EAN	4000870709290					
Code interne	70929					
Composition de la brosse	Alu polycarbonate					
Produit	Paulmann					
Garantie	5 ans					
Matériau	Alu brossé					
Modèle	Mtal					
30.12.2021						

[pdf] Dimension Guide Documentation

Der Titel Paulmann Licht GmbH Documentation 70929 suspension led gutta 1x7w alu Fiche technique FR materielelectrique content fichiers produits paulmann |||

Artikelnummer: **70929** EAN-Nummer: 4000870**709290** Name Suspension LED Gutta 1x7W Alu bross 230V Mtal Producteur Paulmann donnees ampoules Nombre de points lumineux 01 Nombre quipement 1x a temprature de couleur en K 2.700 K Dure de vie 30.000 h quivalence lampes incandescence 48 W L affi...

lang:fr score:28 filesize: 134.34 K page_count: 1 document date: 2021-12-20

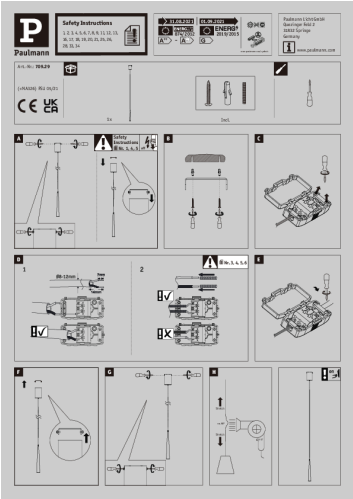
Artikelnummer	70929	SKU Nummer	4000870709290	
Titel				
Gutta Pendelleuchte LED 1x7W Alu geb 230V Metall				
Hersteller				
Paulmann				
Hersteller				
Artikelinfo				
Interne Code	70929			
EAN	4000870709290			
Code interne	70929			
Composition de la brosse	Alu polycarbonate			
Produit	Paulmann			
Garantie	5 Jahre			
Matériau	Alu brossé			
Modèle	Mtal			
Abmessungen				
Gewicht netto	428 g			
Durchmesser	72 mm			
Ø Glas	42 mm			
Pendellänge	45,1 x 130 cm			
Technische Daten	15,1 x 33,5 x 33,5 cm			
Spannung	230 V			
Stromaufnahme	7 W			
Leuchtereigenschaften				
Beleuchtung	1x			
Beleuchtung	1x			
Beleuchtung	1x			
Beleuchtung	1x			
Beleuchtung	1x			
Beleuchtung	1x			
Beleuchtung	1x			
Beleuchtung	1x			
08.11.2023				

[pdf]

Produktblatt ECommerce Paulmann Licht GmbH Produktdatenblatt LED Pendelleuchte Gutta 1x7W Alu gebürstet 230V Metall fest integriert Warmweiß 292e38e5 d0a0 500e a882 05829e0e3c02 d otto de files |||

Artikelnummer: **70929** EAN-Nummer: 4000870**709290** Name Gutta Pendelleuchte LED 1x7W Alu geb 230V Metall Hersteller Paulmann Artikelinfo Interner Code EAN Farbe Material Garantie Hersteller Lieferumfang Abmessungen Gewicht netto Durchmesser Glas Pendellnge Verpackungsmae BxHxL Technische Daten Spa...

lang:tl score:20 filesize: 104.29 K page_count: 1 document date: 2023-11-05

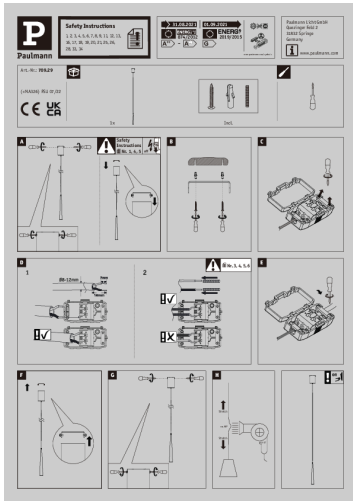


[pdf] Documentation

1 Administrator Documentation Paulmann 70929 suspension led gutta 1x7w alu Notice de montage 00 materielelectrique content fichiers produits paulmann |||

, - * , - # # * , ...

lang:tl score:12 filesize: 1.02 M page_count: 2 document date: 2021-05-25

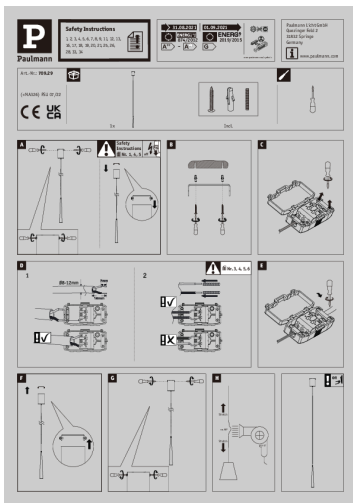


[pdf]

Installation Montage LED Pendelleuchte Gutta 2700K 520lm 7W Alu gebürstet 70929 V01 content paulmann media b0 ab de 1665216296 ||| ||| ----- - - - * , , # *

----- - - - *** , , # *** ...

lang:tl score:11 filesize: 1.08 M page_count: 2 document date: 2022-08-23



[pdf]

Navodila za uporabo 1782355 Paulmann Gutta 70929 LED viseča svetilka fiksno vgrajena 7 W aluminij krtačen MegaShop spletna trgovina Megashop si navodila paulmann gutta led viseca w krtacen asset conrad media10 add 160267 c1 gl 001782355ML12 |||

----- - - - *** , , # *** ...

lang:tl score:10 filesize: 1.08 M page_count: 2 document date: 2022-08-23