



Manuals.plus /

› Whirlpool /

› Whirlpool 9.5 kg Fully-Automatic Top Loading Washing Machine User Manual

Whirlpool 360 Degree Bloomwash Pro H 9.5

Whirlpool 9.5 kg Fully-Automatic Top Loading Washing Machine User Manual

Model: 360 Degree Bloomwash Pro H 9.5

Brand: Whirlpool

1. INTRODUCTION

This manual provides comprehensive instructions for the safe and efficient operation, installation, and maintenance of your Whirlpool 9.5 kg Fully-Automatic Top Loading Washing Machine, Model 360 Degree Bloomwash Pro H 9.5. Please read this manual thoroughly before using the appliance and retain it for future reference.

Key features of this washing machine include:

- Premium Edge to Edge aesthetic with 12 Wash Programs.
- In-Built Heater Technology for various water temperatures.
- 360 Bloomwash Action with Hexabloom Impeller for thorough cleaning.
- LED Digital Display and Soft Close Lid for enhanced user experience.
- Zero Pressure Fill Technology for faster tub filling.
- Hard Water Wash Technology.
- Auto Tub Clean Feature for hygiene.



Figure 1.1: Front view of the Whirlpool 9.5 kg Fully-Automatic Top Loading Washing Machine.

2. SETUP AND INSTALLATION

Proper installation is crucial for the optimal performance and longevity of your washing machine. This appliance is designed for freestanding installation.

2.1 Unpacking and Components

Carefully unpack the washing machine. Ensure all components are present and undamaged. The package should include:

- 1 x Whirlpool Washing Machine
- 1 x Inlet Pipe
- 1 x Outlet Pipe

- 1 x User Manual

2.2 Placement and Dimensions

Place the washing machine on a firm, level surface to minimize vibration and noise during operation. Ensure adequate space around the appliance for ventilation and access.

- **Product Dimensions (LxWxH):** 60.7 cm x 57 cm x 104.6 cm
- **Item Weight:** 38 kg



Figure 2.1: Washing machine dimensions for proper placement.

2.3 Water and Electrical Connections

Connect the inlet pipe to a cold water tap with sufficient water pressure. The outlet pipe should be directed to a drain. Ensure the electrical connection is a standard 220 Volts supply and use a dedicated electrical switch for the appliance.

Note: If water pressure is low, you may need to check or remove filters in the water inlet pipes to ensure optimal water flow.

3. OPERATING INSTRUCTIONS

Your Whirlpool washing machine is equipped with a fully automatic control console and various features to ensure effective and convenient washing.

3.1 Control Panel Overview

The LED Digital Display provides clear information about the selected wash program and cycle status. The soft close lid ensures gentle closing and prevents damage.



Figure 3.1: Detailed view of the washing machine's control panel.

3.2 Wash Programs

The washing machine offers 12 distinct wash programs to cater to various fabric types and soil levels. Select the appropriate program based on your laundry needs.

- Daily
- Heavy

- Delicates
- Whites
- Stainwash
- Anti Bacterial
- Eco
- Woollens
- Bed Sheet
- Rinse + Spin
- Spin
- Wash Only



Our service staff is trained for the safest care.

	Service staff takes appointment for every visit.
	Carries sanitizer and liquid soap.
	Wears masks, gloves and shoe covers.
	Undergoes daily thermal screening.
	Follows prescribed social distancing norms.
	Sanitizes hands before and after entering the house.
	Washes hands for minimum 20 seconds before starting and after finishing the job.

Figure 3.2: Overview of the 12 available wash programs.

3.3 In-Built Heater and Hot Water Modes

The in-built heater allows for customized hot water washes at three different levels, providing enhanced cleaning and hygiene.

- **Warm:** Suitable for moderately soiled clothes, jeans, and synthetics. Helps remove stains like butter and ketchup.
- **Hot:** Ideal for heavily soiled items, bath and kitchen towels, bedsheets, and white cotton t-shirts. Effective for removing stains like oil and tea.
- **Allergen Free:** Designed for heavily stained items, cottons, and whites. Removes stains like mud and coffee, and eliminates germs and allergens.

Customised care for fabrics with **3 Hot Water Modes**

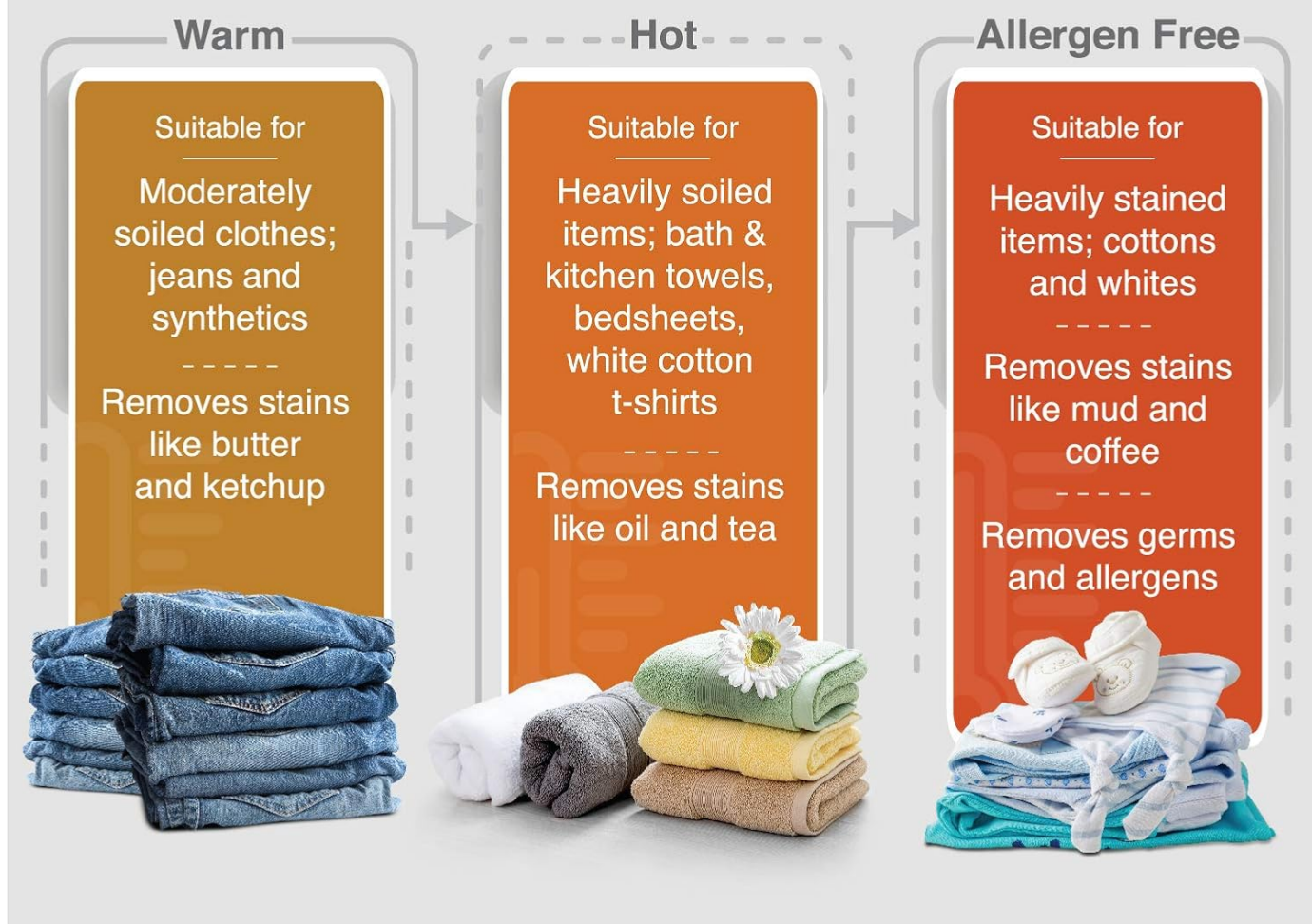


Figure 3.3: Explanation of the 3 Hot Water Modes for customized fabric care.

3.4 Special Washing Technologies

- **360 Bloomwash Action with Hexabloom Impeller:** Ensures thorough washing by creating a unique 360-degree blooming wash motion.
- **Zero Pressure Fill Technology:** Allows the wash tub to fill up to 50% faster, even with very low water pressure (as low as 0.017MPa).
- **Hard Water Wash Technology:** Optimizes washing performance even in areas with hard water.

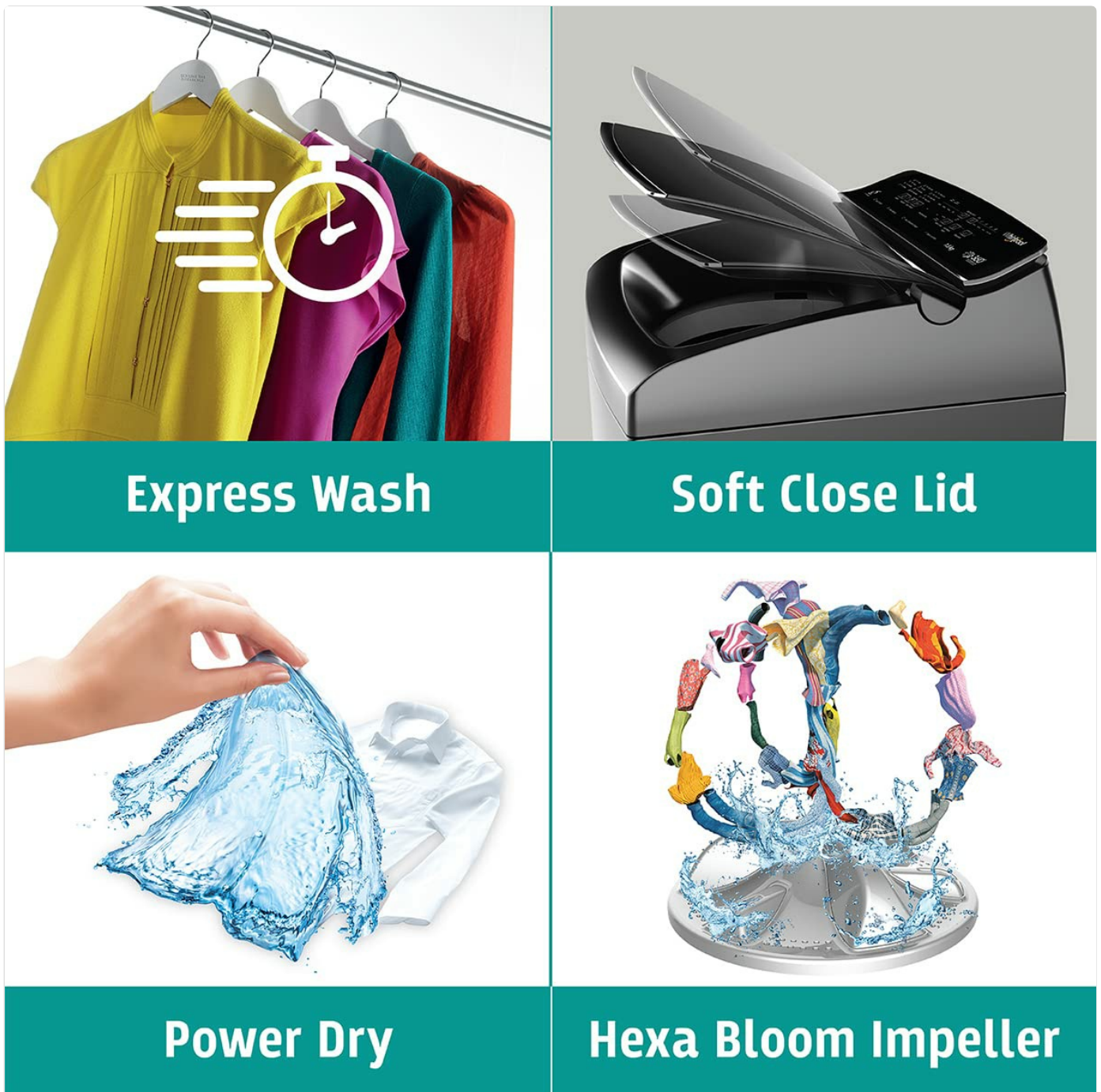


Figure 3.4: Visual representation of key operational features.

4. MAINTENANCE

Regular maintenance ensures the longevity and efficient performance of your washing machine.

4.1 Auto Tub Clean Feature

The washing machine is equipped with an Auto Tub Clean feature. Utilize this program regularly to clean the wash tub and prevent detergent residue buildup and odors.

4.2 Filter Cleaning

Periodically check and clean the water inlet filters. Blocked filters can reduce water flow and affect washing performance. Refer to the detailed instructions in the included manual for filter access and cleaning procedures.

4.3 General Cleaning

Wipe the exterior of the machine with a soft, damp cloth. Do not use abrasive cleaners or solvents. Keep the detergent dispenser

clean to prevent blockages.

5. TROUBLESHOOTING

This section addresses common issues you might encounter. For problems not listed here, please contact customer support.

Problem	Possible Cause	Solution
Machine is noisy or shakes excessively during spin cycle.	Clothes are not evenly distributed in the drum; machine is not level.	Adjust the clothes inside the drum. Ensure the machine is placed on a firm, level surface and adjust leveling feet if necessary.
Wash cycle takes too long to complete.	Low water pressure; clogged water inlet filters.	Check water supply and pressure. Clean the water inlet filters.
Water is not filling or filling slowly.	Water tap is closed; water inlet hose is kinked; water inlet filters are clogged.	Ensure water tap is fully open. Straighten the water inlet hose. Clean the water inlet filters.
Poor washing results.	Incorrect wash program selected; too much or too little detergent; overloaded machine.	Select the appropriate wash program. Use the recommended amount of detergent. Do not overload the machine.

6. SPECIFICATIONS

Detailed technical specifications for the Whirlpool 9.5 kg Fully-Automatic Top Loading Washing Machine.

Brand: Whirlpool

Model: 360 Degree Bloomwash Pro H 9.5

Capacity: 9.5 Kilograms

Installation Type: Freestanding

Form Factor: Top-Loading

Control Console: Fully Automatic

Colour: Graphite

Material: Stainless Steel

Voltage: 220 Volts

Annual Energy Consumption: 50 Watts

Maximum Rotational Speed: 740 RPM

Noise Level (Washing): 63 Decibels

Noise Level (Spinning): 72 dB

Number of Option Cycles: 12

Special Features: Inbuilt Heater

Item Weight: 38 kg

Item Dimensions (LxWxH): 60 x 57 x 104 Centimeters

Included Components: 1 Washing Machine, 1 Inlet Pipe, 1 Outlet Pipe and 1 Manual

Date First Available: 4 December 2018

7. WARRANTY AND SUPPORT

7.1 Product Warranty

Your Whirlpool washing machine comes with a comprehensive warranty. Please refer to the warranty card included with your product for specific terms and conditions.



Figure 7.1: Warranty information for the product.

7.2 Customer Support

For any queries, service requests, or technical assistance, please contact Whirlpool customer support:

- **Email:** helpdeskindia@whirlpool.com
- **Toll Free:** 1800 208 1800
- **Manufacturer Address:** Whirlpool of India Ltd. Plot No. A-4, MIDC Ranjangaon, Taluka Shirur, Dist: Pune, Maharashtra 412220, India

7.3 Service Staff Protocols

Whirlpool service staff are trained to provide the safest care during home visits, adhering to strict hygiene and safety protocols.

12 WASH PROGRAMS



Daily



Heavy



Delicates



Whites



Stainwash



Baby Care



Woollens



Hot Finish



Eco Wash



Rinse + Dry



Dry Only



Wash Only

Figure 7.2: Whirlpool service staff safety measures.