



Manuals.plus /

› Sonew /

› Sonew Wireless Sound and Light Strobe Siren (Model: B07L3RPS88) - Instruction Manual

Sonew B07L3RPS88

Sonew Wireless Sound and Light Strobe Siren

Model: B07L3RPS88 - Instruction Manual

1. PRODUCT OVERVIEW

The Sonew Wireless Sound and Light Strobe Siren is a security device designed to deter intruders with its integrated sound and light alarm. It features 8 LED alarm lights and an 80dB alarm sound. This siren can operate independently or integrate with a compatible alarm host system, such as the PG103 WIFI alarm host.

Wireless Home Sound and Light Strobe Siren



Figure 1: Sonew Wireless Sound and Light Strobe Siren, front view.

The siren is equipped with a built-in rechargeable 7.4V / 400MA lithium battery, allowing it to continue functioning for approximately 5 to 8 hours during a power outage. Its streamlined round design and polished finish offer a simple yet modern aesthetic.

2. KEY FEATURES

- **Integrated Alarm:** Emits 80dB sound and flashes 8 LED lights to effectively deter intruders.
- **Backup Power:** Built-in 7.4V / 400MA rechargeable lithium battery provides 5-8 hours of standby operation during power failures.
- **Wireless Compatibility:** Can function as a wireless sound and light siren for the PG103 WIFI alarm host.
- **Alarm Host Capability:** Can act as an alarm host itself, capable of learning up to 5 remote controls and 20 detectors.
- **Smart APP Control:** Supports one-key functions for arming (outdoor, indoor, emergency) and disarming via a compatible mobile application.

3. PACKAGE CONTENTS

Please verify that all items are present in the package:

- 1 x Sonew Wireless Sound and Light Strobe Siren (with built-in battery)
- 1 x 5V Power Adapter (US Plug)
- 2 x Mounting Screws
- 1 x English User Manual

4. SETUP AND INSTALLATION

4.1 Component Identification

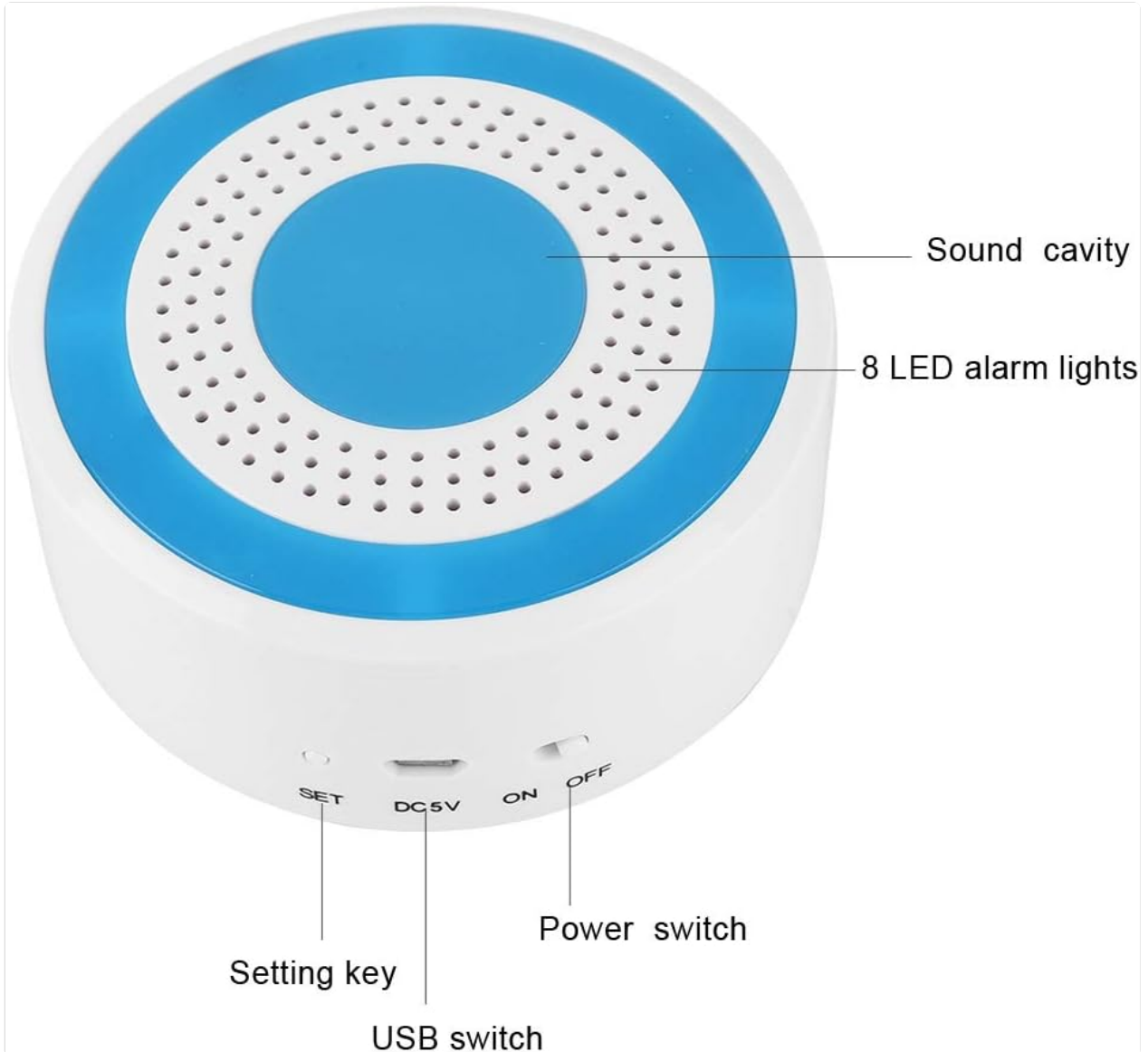


Figure 2: Component identification of the Sonew Strobe Siren. Labels include Sound Cavity, 8 LED Alarm Lights, Setting Key, USB Switch, and Power Switch.

4.2 Power Connection

1. Connect the provided 5V power adapter to the DC5V input port on the siren.
2. Plug the power adapter into a standard 100-240V AC power outlet.
3. Ensure the siren is powered on using the 'ON/OFF' switch. The built-in battery will begin charging automatically.

4.3 Mounting

The siren can be mounted on a floor or wall. Use the provided screws to secure the device in your desired

location. Ensure the mounting location allows for optimal sound and light dispersion and is within range of other wireless alarm components.

4.4 Pairing with Alarm System (Optional)

The siren can function as a standalone unit or integrate with a compatible alarm host, such as the PG103 WIFI alarm host. It can also act as an alarm host itself, capable of learning up to 5 remote controls and 20 detectors (e.g., infrared sensors, door/window magnetic sensors).

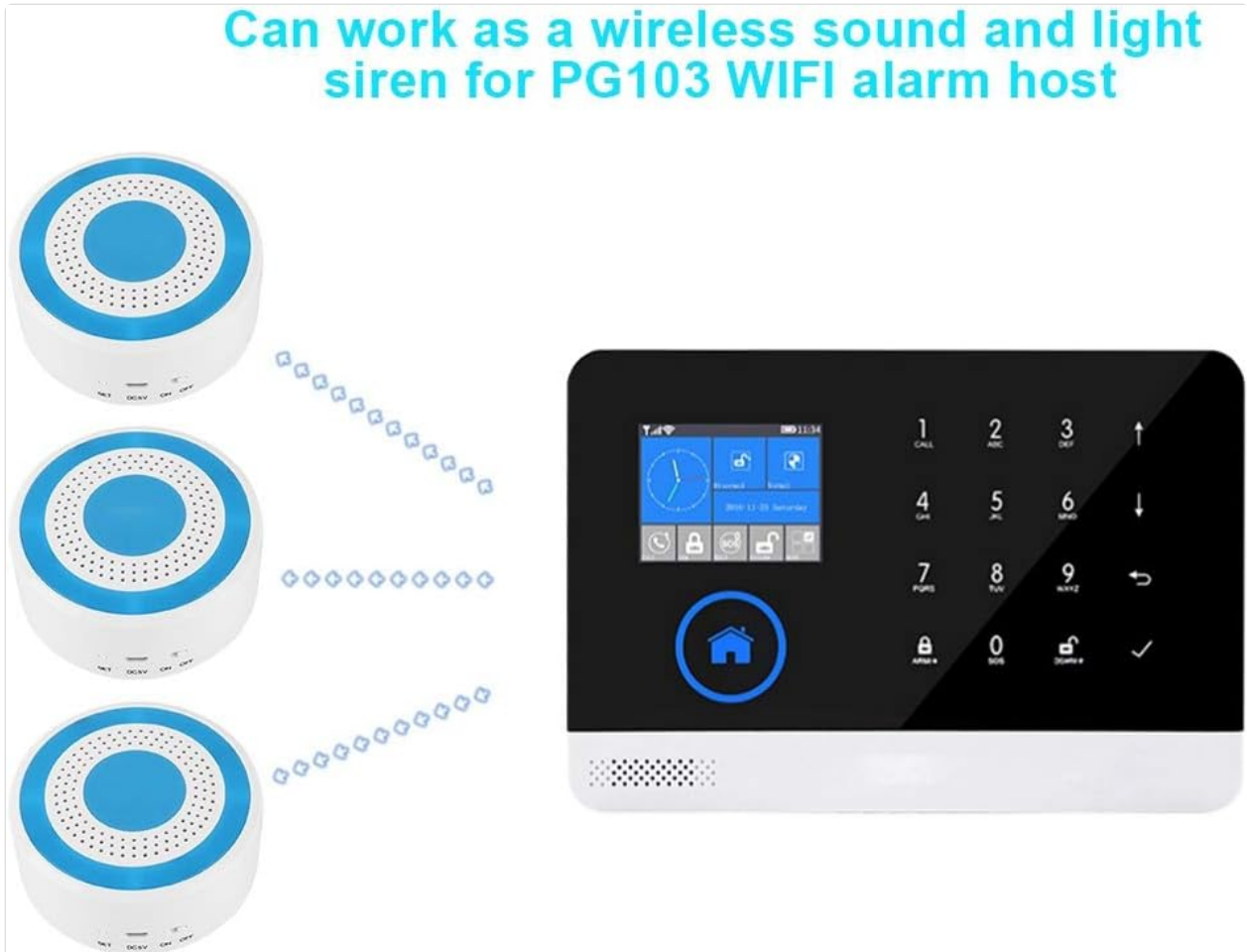


Figure 3: The siren can integrate with a PG103 WIFI alarm host for expanded coverage.

Can be used as the alarm host, learning 5 remote controllers, 20 detectors



Figure 4: The siren can learn and manage up to 5 remote controls and 20 detectors.

Refer to the specific instructions for your remote controls or detectors for their pairing procedures. Generally, this involves putting the siren into a 'learning' mode (often via the 'SET' button or APP) and then triggering the remote/detector.

5. OPERATING INSTRUCTIONS

5.1 Basic Operation

Once powered on and optionally paired, the siren will respond to signals from connected remote controls or alarm detectors. When an alarm is triggered, the siren will activate its 8 LED lights and emit an 80dB sound.



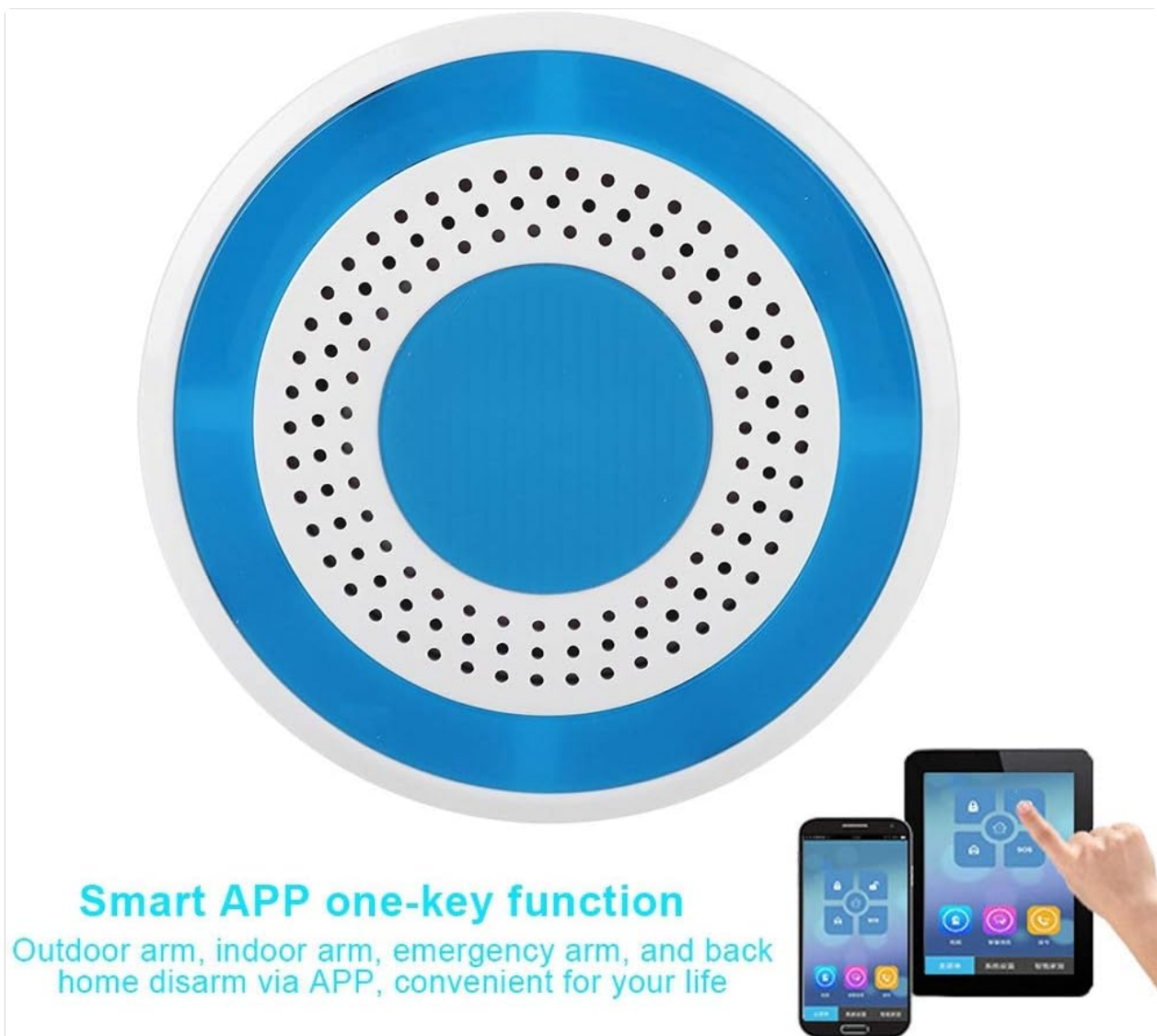
Figure 5: The siren activates with sound and light upon detecting an intrusion.

5.2 Smart APP Control (If Applicable)

The siren supports smart one-key functions via a compatible mobile application. This allows for remote control of arming and disarming:

- **Outdoor Arm:** Activates the alarm system for full protection.
- **Indoor Arm:** Activates perimeter protection while allowing movement inside.
- **Emergency Arm:** Triggers an immediate alarm.
- **Disarm:** Deactivates the alarm system.

When the alarm host receives a signal, it will send a message to the owner (if configured) and activate the sound and light alarm on the siren.



Smart APP one-key function
Outdoor arm, indoor arm, emergency arm, and back home disarm via APP, convenient for your life

Figure 6: Example of smart APP control interface for arming and disarming the system.

6. MAINTENANCE

To ensure optimal performance and longevity of your Sonew Wireless Sound and Light Strobe Siren, follow these maintenance guidelines:

- **Cleaning:** Wipe the device regularly with a soft, dry cloth. Avoid using abrasive cleaners or solvents that could damage the surface.
- **Battery Care:** The built-in lithium battery is designed for backup power. For best battery life, keep the device connected to power when possible. If storing the device for an extended period, ensure the battery is partially charged (around 50%) and recharge it every few months.
- **Placement:** Ensure the siren is placed in a location free from excessive moisture, extreme temperatures, or direct sunlight, which can affect its electronic components.

7. TROUBLESHOOTING

If you encounter issues with your Sonew Wireless Sound and Light Strobe Siren, refer to the following common problems and solutions:

Problem	Possible Cause	Solution
Siren does not activate.	No power, low battery, or not properly paired.	Check power connection. Ensure the 'ON/OFF' switch is in the 'ON' position. Verify battery charge. Re-pair with remote controls or detectors if necessary.
Siren does not respond to APP commands.	App not configured, siren not connected to network, or app compatibility issues.	Ensure the siren is properly connected to your WiFi network (if applicable). Verify the app is correctly installed and configured. If issues persist, consider using physical remote controls as an alternative.
Siren activates unexpectedly.	False alarm from detector, or interference.	Check connected detectors for false triggers. Ensure no strong electromagnetic interference sources are nearby.
Battery backup not working.	Battery depleted or faulty.	Ensure the device has been connected to power for sufficient charging time. If the issue persists, the battery may need replacement.

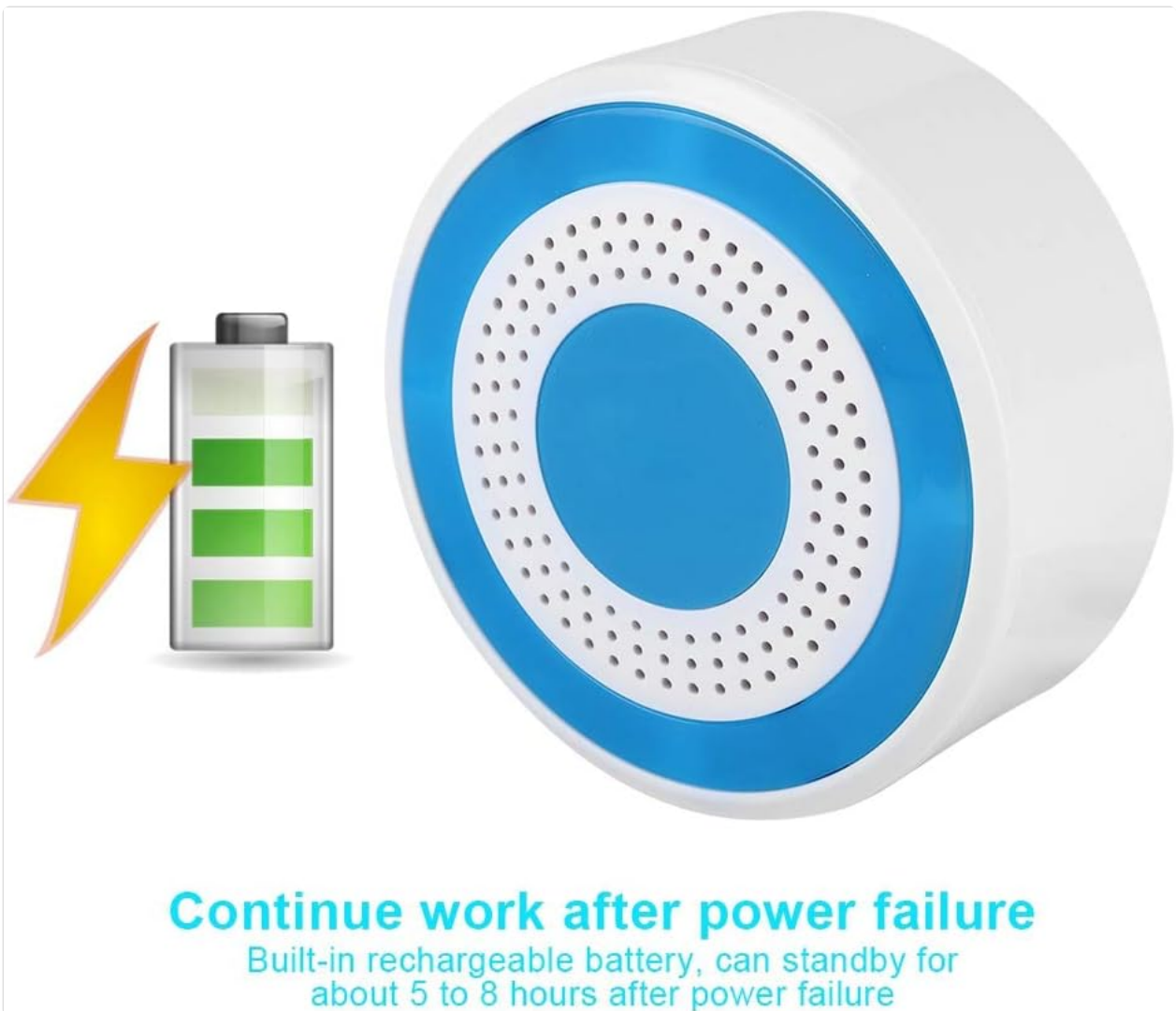


Figure 7: The siren features a built-in battery for continued operation during power outages.

8. SPECIFICATIONS

Feature	Specification
Model Number	B07L3RPS88
Brand	Sonew
Power Input	100-240V AC (US Plug)
Output Power	DC5V1A
Battery Type	7.4V / 400MA Rechargeable Lithium Battery
Standby Current	≤13mA
Alarm Current	≤230mA
Alarm Sound Level	100 Decibels (80dB mentioned in description, 100dB in specs, using 100dB as per specs)
Frequency	433MHz / 314MHz
Working Temperature	-20°C ~ +55°C
Working Humidity	40% ~ 80% RH
Dimensions (Product)	8.0 * 3.6 cm (3.1 * 1.4 inches)
Weight (Package)	196g (6.9oz)
Control Method	Application, Remote Control
Mounting Type	Floor Mount
Sensor Technology	Infrared and Magnetic Sensor (for compatible detectors)
Compatible Devices	Smartphones, Tablets, WIFI Alarm Host PG103

9. WARRANTY AND SUPPORT

For warranty information or technical support, please refer to the documentation included with your purchase or contact Sonew customer service through the retailer where the product was purchased. Keep your purchase receipt for warranty claims.