



[Manuals.plus](#) /

› [ASIILOVI](#) /

› ASIILOVI Bluetooth Beanie User Manual - Model VG001

ASIILOVI VG001

ASIILOVI Bluetooth Beanie User Manual

Model: VG001

INTRODUCTION

Thank you for choosing the ASIILOVI Bluetooth Beanie. This manual provides essential information for the safe and efficient use of your new Bluetooth hat. Please read these instructions carefully before use and retain them for future reference.

PRODUCT FEATURES

- **Double-Layer Wool Lining:** Provides warmth and comfort.
- **Bluetooth 5.0 Technology:** Ensures stable connection up to 45 feet (15 meters).
- **Integrated HD Speakers & Microphone:** For clear audio and hands-free calls.
- **Long Battery Life:** Up to 20 hours of playing time, 24 hours of talk time, and 100 hours of standby time on a single charge.
- **Easy-to-Use Controls:** Three-button panel for music playback, call management, and volume control.
- **Removable Electronics:** Allows for easy washing of the beanie.



Fashion & Functionality

Double-Layer Wool Lining
& ONE SIZE FITS ALL

Image: A man and a woman wearing ASIILOVI Bluetooth Beanies, highlighting the stylish design and integrated audio functionality.

SETUP INSTRUCTIONS

1. Charging the Beanie

Before initial use, ensure the beanie is fully charged. Connect the provided USB charging cable to the charging port located on the control panel. The LED indicator light will show charging status.

Up to 20 Hours Playing & Superior Audio Quality



45 Feet
Wireless Range

2



2 Hours
Charging Time

20



20 Hours
Playing Time



Exceptional
Audio Fidelity

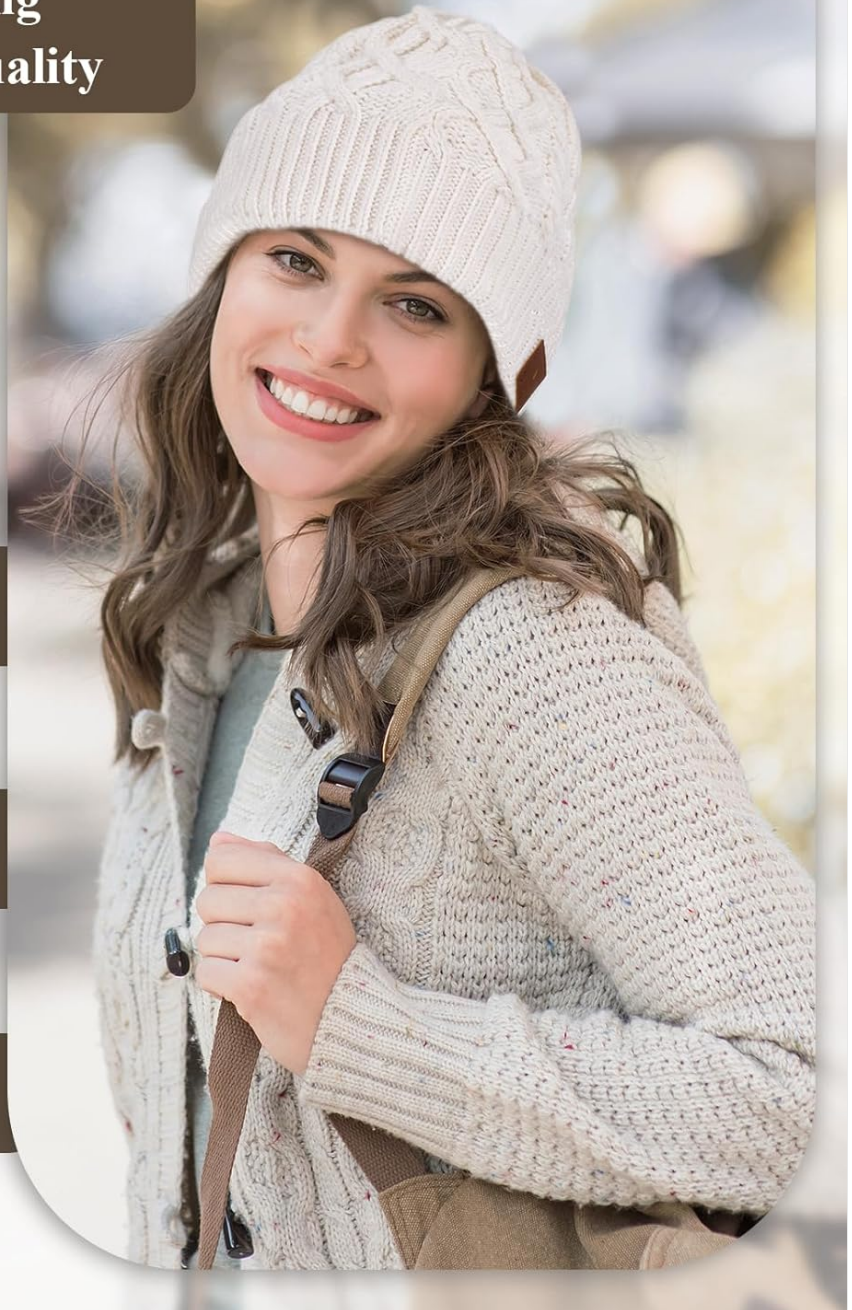


Image: Visual representation of the beanie's battery life and charging specifications.



2. Bluetooth Pairing

1. Ensure the beanie is charged.
2. Hold down the Play/Pause button (center button) for 5 seconds until the Red and Blue LED lights flash alternately. The voice prompt will say "Power on" and then "Pairing".
3. On your device (smartphone, tablet, etc.), turn on Bluetooth.
4. Search for "Bluetooth Beanie" in the list of available devices and select it to connect.
5. Once connected, the LED indicator will turn blue, and you will hear a "Du Du Du" sound, confirming successful pairing.



Pairing the Bluetooth Beanie on your device

1 Make sure our device charged before trying to connect.

2 Hold down the  button 5 seconds, until the Red and Blue light flashes . First, headphone will say "Power on", and KEEP holding it and it will finally say "Pairing". Then release your finger.



3 Turn on Bluetooth on you device, a name(Bluetooth Beanie) will show up. Click the name, Start pairing. When the product indicator light **Turn Blue** and you can hear the sound of "Du Du Du" from the module, the connection is successful!

 The Bluetooth beanie has connected to your device.

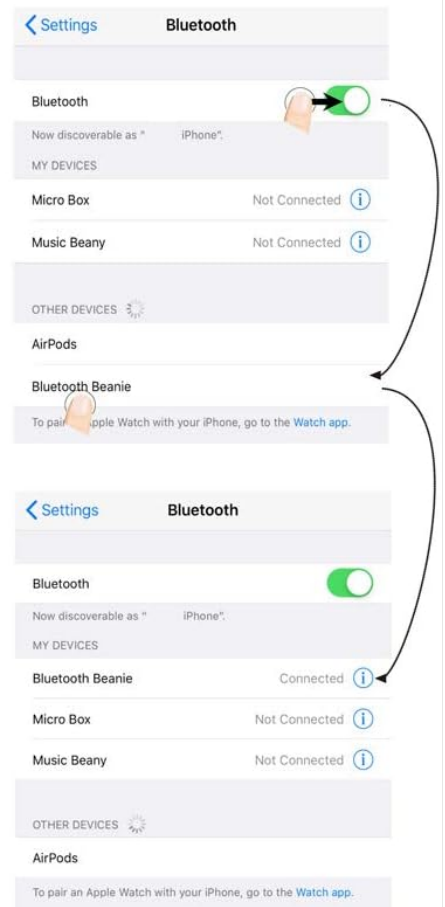


Image: Step-by-step visual guide for connecting the Bluetooth Beanie to a device.

OPERATING INSTRUCTIONS

The control panel on the beanie allows for easy management of audio and calls:

- **Power On/Off:** Press and hold the Play/Pause button.
- **Play/Pause Music:** Press the Play/Pause button once.
- **Volume Up:** Press the '+' button.
- **Volume Down:** Press the '-' button.
- **Next Song:** Press and hold the '+' button.
- **Previous Song:** Press and hold the '-' button.
- **Answer/End Call:** Press the Play/Pause button once during an incoming call.
- **Reject Call:** Press and hold the Play/Pause button during an incoming call.

MAINTENANCE

Washing Instructions

To wash your ASILOVI Bluetooth Beanie, you must first remove the electronic components:

1. Locate the small openings on the inside of the beanie where the speakers and control panel are housed.
2. Carefully push the speakers and control panel out through these openings.
3. Once all electronic components are removed, the beanie can be hand-washed in cold water.
4. Air dry the beanie completely before reinserting the electronic components. Do not tumble dry.
5. Reinsert the speakers and control panel into their respective pockets, ensuring the control panel is accessible from the outside.

Detachable Module for Easier Washing the Beanie



1. TAKE OUT

Take out the headset and controller



2. HAND WASH THE BEANIE



3. HANG YOUR BEANIE TO DRY



4. REATTACH THE SPEAKERS & CONTROLLER

Note 1: Remember to remove the SPEAKERS before washing

Note 2: Hand Wash Only

Image: Detailed steps for safely removing electronics and washing the beanie.

TROUBLESHOOTING

- **Cannot Pair:** Ensure the beanie is charged and within 45 feet of your device. Turn off and on your device's Bluetooth, then try pairing again.
- **No Sound:** Check the volume levels on both the beanie and your connected device. Ensure the beanie is properly paired.
- **Intermittent Connection:** Move closer to your device. Avoid obstacles that may interfere with the Bluetooth signal.

- **Beanie Not Turning On:** Charge the beanie fully.

If you encounter any issues not covered here, please refer to the support section for assistance.

SPECIFICATIONS

Feature	Detail
Model Number	VG001
Bluetooth Version	5.0 + EDR
Wireless Range	Up to 45 feet (15 meters)
Playing Time	Up to 20 hours
Talk Time	Up to 24 hours
Standby Time	Up to 100 hours
Charging Time	Approx. 1 hour
Battery Type	Lithium Ion (included)
Product Dimensions	9.06 x 1.18 x 9.06 inches
Item Weight	5.6 ounces

SAFETY INFORMATION

- Do not expose the electronic components to liquid or moisture.
- Do not attempt to disassemble or modify the beanie's electronics.
- Keep away from fire or extreme temperatures.
- Always remove electronic components before washing the beanie.
- Use only the provided charging cable or a certified equivalent.

WARRANTY & SUPPORT

Your ASIILLOVI Bluetooth Beanie comes with a **18-month warranty**. For any questions, concerns, or technical support, please contact our friendly customer service team. We are committed to providing hassle-free support.

Contact Information: ASIILLOVI@outlook.com

PRODUCT OVERVIEW VIDEO

Your browser does not support the video tag.

Video: An official overview of the ASIILLOVI Bluetooth Beanie, showcasing its features and gift packaging. This video provides a comprehensive look at the product from the seller.

