

Aexit modle

Aexit SPDT Momentary Foot Switch User Manual

Model: modle

INTRODUCTION

This manual provides instructions for the Aexit SPDT Momentary Foot Switch. This switch is designed for use in guitar stomp pedals and other electronic applications requiring a momentary, single-pole, double-throw (SPDT) action. It facilitates true bypass wiring for effect circuits and can control an LED status light or other custom functions.

SAFETY INFORMATION

Always exercise caution when working with electrical components. Ensure power is disconnected before installation or maintenance. If you are unfamiliar with electrical wiring, consult a qualified technician. Incorrect wiring can damage equipment or cause injury.

- Disconnect power before installation.
- Ensure proper insulation for all connections.
- Do not exceed the rated voltage and current (AC 250V 2A).
- Keep away from moisture and extreme temperatures.

SETUP AND INSTALLATION

The Aexit SPDT Momentary Foot Switch features three terminals, allowing for versatile wiring configurations. It is commonly used for true bypass applications in guitar pedals or to control an LED indicator.

Wiring for True Bypass

For true bypass wiring, the switch routes the input signal directly to the output when disengaged, completely bypassing the effect circuit. When engaged, it directs the signal through the effect circuit. The three terminals correspond to common, normally open (NO), and normally closed (NC) connections.

Typical Wiring (Consult specific circuit diagrams for your application):

- **Common Terminal:** Connect to the input signal (e.g., from the guitar or previous pedal).
- **Normally Closed (NC) Terminal:** Connect to the output jack (for bypass path).
- **Normally Open (NO) Terminal:** Connect to the input of the effect circuit. The output of the effect circuit then connects to the output jack.

The third pole can also be used to control an LED status light, indicating when the effect is active. This typically involves wiring the LED and a current-limiting resistor between the appropriate switch terminal and ground/power, depending on the desired behavior.

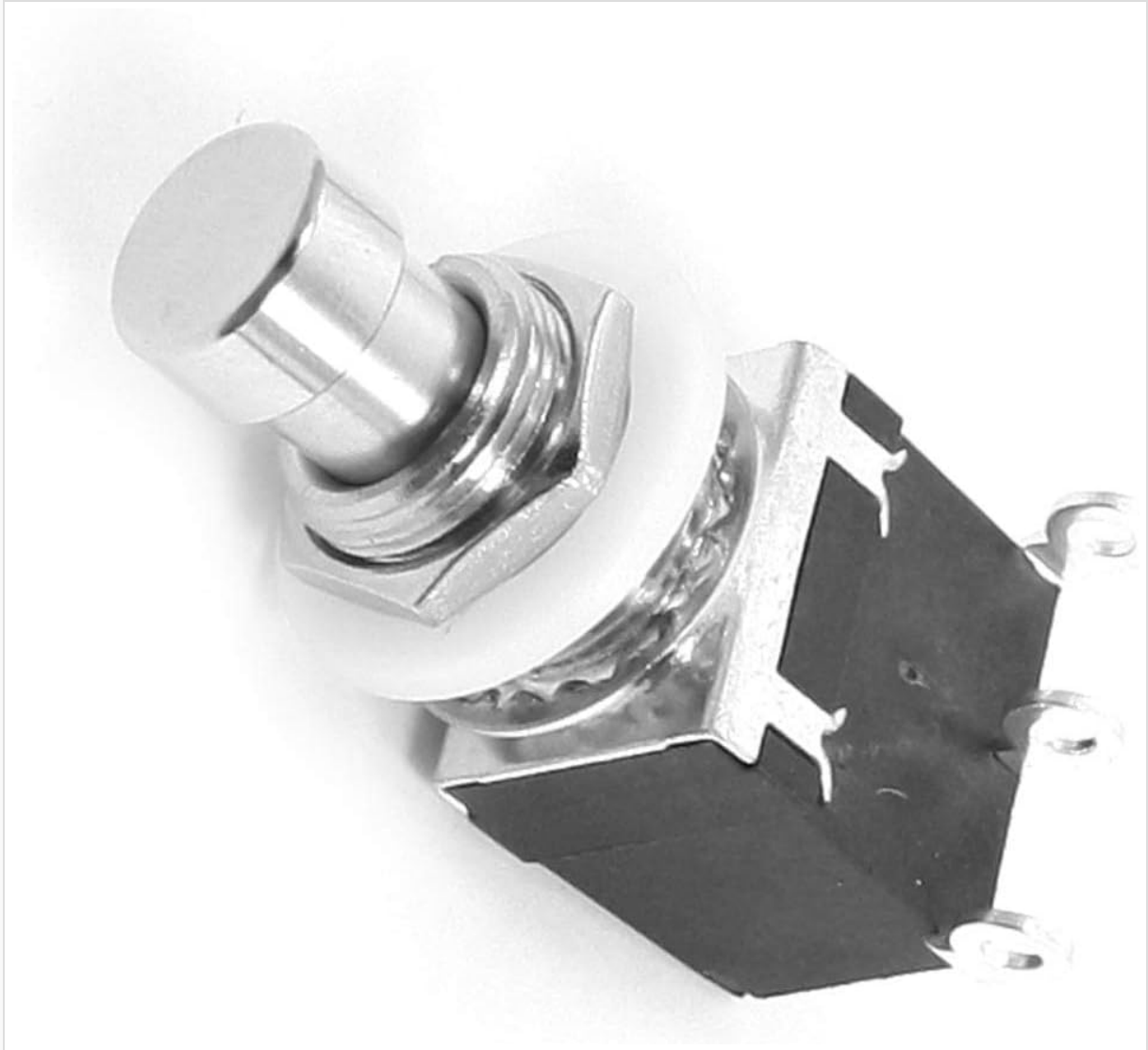


Figure 1: Top-down view of the Aexit SPDT Momentary Foot Switch, highlighting the metal plunger and the mounting hardware. This view shows the part that is pressed by the foot.

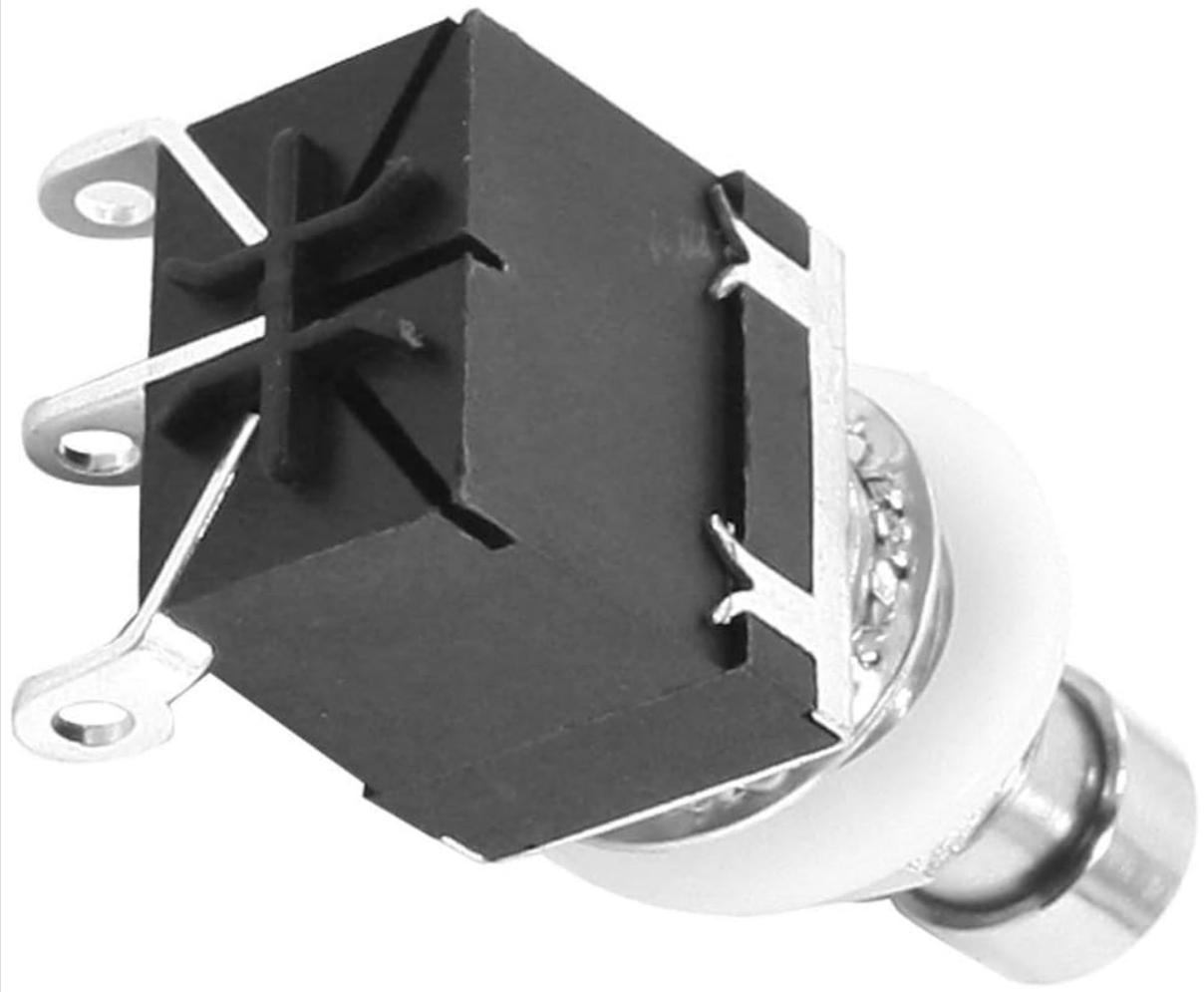


Figure 2: Side view of the Aexit SPDT Momentary Foot Switch, clearly displaying the three solder terminals for electrical connections. This view is crucial for identifying the wiring points.

OPERATING INSTRUCTIONS

This is a **momentary** foot switch. This means the switch maintains its activated state only as long as pressure is applied to the plunger. Once the pressure is released, the switch returns to its original, unactivated state. It does not latch into position.

To operate, simply press the metal plunger with your foot. The electrical contacts will change state while pressed and revert when released.

MAINTENANCE

The Aexit SPDT Momentary Foot Switch is designed for durability and requires minimal maintenance. Keep the switch clean and free from dust and debris. Avoid exposing it to excessive force or harsh chemicals. Periodically check wiring connections for security, especially in high-vibration environments.

TROUBLESHOOTING

- **No Signal/Intermittent Signal:** Check all wiring connections for proper soldering and secure contact. Ensure the switch is rated for the voltage and current of your circuit.
- **Switch Feels Stiff/Sticky:** Ensure the mounting nut is not overtightened, which can impede plunger movement. Clean any visible debris around the plunger mechanism.
- **LED Not Functioning (if applicable):** Verify LED polarity, resistor value, and connections to the switch and power source.

If issues persist, consult a qualified electronics technician.

SPECIFICATIONS

Feature	Detail
Item Name	Guitar Foot Switch
Action Type	Momentary
Contact Type	SPDT (Single Pole Double Throw)
Rating Power	AC 250V 2A
Dimensions (L*W*H)	17 x 13 x 42mm / 0.67" x 0.5" x 1.6"
Main Material	Metal, Plastic
Color	Black, Silver Tone
Weight	15g / 0.529 ounces
Manufacturer	Aexit
Model Number	modle

WARRANTY AND SUPPORT

For warranty information and technical support regarding your Aexit SPDT Momentary Foot Switch, please refer to the documentation provided with your purchase or contact the manufacturer directly. Specific warranty terms and support channels may vary.