

Steinel XSolar SOL-O S (052959)

Steinel XSolar SOL-O S Solar Light Instruction Manual

Model: XSolar SOL-O S (052959) | Brand: Steinel

1. INTRODUCTION

The Steinel XSolar SOL-O S Sensor outdoor light is a solar-powered LED lighting solution designed for outdoor use. It operates without a direct power connection, utilizing solar energy to provide illumination. The integrated LED system delivers 273 lumens of warm white light, suitable for various outdoor areas.

Key features include:

- Highly efficient LED system with 50,000 hours LED life.
- Integrated 360° motion sensor with a maximum range of 6 meters.
- Twilight sensor for automatic operation.
- Soft light start and night light function.
- Powered by powerful lithium ferrum batteries and a monocrystalline solar panel, providing up to 365 days of light per year with a 20-day reserve.
- IP44 protection class for outdoor durability.



Figure 1: Steinel XSolar SOL-O S Solar Light

2. SAFETY INSTRUCTIONS

- Read all instructions carefully before installation and use.
- Ensure the mounting surface is stable and can support the weight of the fixture.
- Do not attempt to modify or repair the device yourself. Contact qualified personnel for service.
- Keep the solar panel clean to ensure optimal charging efficiency.
- Dispose of batteries according to local regulations.
- Avoid looking directly into the LED light source when it is active.

3. PACKAGE CONTENTS

Verify that all components are present in the package:

- Steinel XSolar SOL-O S Solar Light with wall bracket
- Mounting material (2 x screws, 2 x dowels)
- 2 x Sensor cover trays
- Instruction manual

4. SETUP AND INSTALLATION

Follow these steps for proper installation:

1. **Initial Battery Charge:** It is recommended to charge the solar battery in advance using a micro USB cable (not included) for optimal performance upon first use.
2. **Select Mounting Location:** Choose a location that receives direct sunlight for several hours daily to ensure efficient charging of the solar panel. The light should be mounted on a wall or similar vertical surface.
3. **Mark Drilling Points:** Use the wall bracket as a template to mark the drilling points on the desired mounting surface.
4. **Drill Holes:** Drill holes at the marked points and insert the provided dowels.
5. **Mount the Light:** Secure the solar light to the wall using the provided screws.
6. **Adjust Detection Area:** Use the included sensor cover trays to adjust the detection area of the motion sensor as needed.

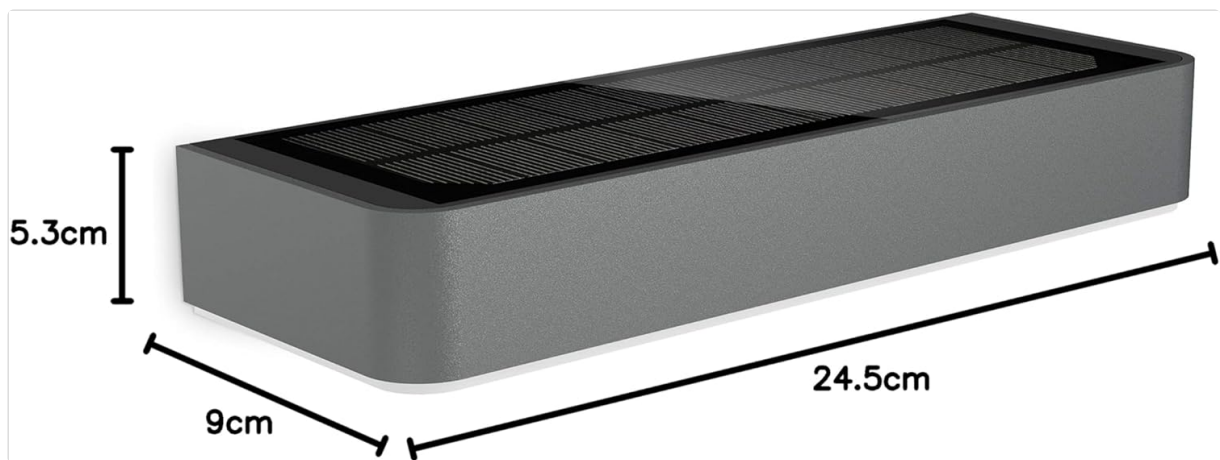


Figure 2: Product Dimensions (L x W x H: 24.5 x 9 x 5.3 cm)



Figure 3: Example of wall mounting

5. OPERATING INSTRUCTIONS

The XSolar SOL-O S is designed for automatic operation based on ambient light and motion detection.

- **Solar Charging:** During daylight hours, the monocrystalline solar panel charges the internal lithium ferrum battery. Ensure the solar panel is free from obstructions for efficient charging.
- **Twilight Sensor:** The integrated twilight sensor automatically activates the light's functions when ambient light levels fall below a certain threshold.
- **Night Light Function:** At dusk, the night light function provides a continuous, low-level illumination for enhanced visibility and security.
- **Motion Sensor:** The 360° motion sensor detects movement within its 6-meter range. Upon detection, the light will switch from night light mode to full brightness with a soft light start, gradually increasing illumination.
- **Automatic Shut-off:** After a period of no detected motion, the light will automatically return to its night light setting or turn off, depending on the selected program.
- **Program Selection:** The mini sensor allows for easy program selection to customize the light's behavior (e.g., duration of full brightness, sensitivity). Refer to the detailed instructions in the included manual for specific program settings.



Figure 4: XSolar SOL-O S providing illumination at night

6. MAINTENANCE

Regular maintenance ensures optimal performance and longevity of your solar light.

- **Cleaning the Solar Panel:** Periodically wipe the solar panel with a soft, damp cloth to remove dust, dirt, and debris. A clean panel ensures maximum sunlight absorption and charging efficiency.
- **Cleaning the Light Fixture:** Clean the light housing with a soft, dry or slightly damp cloth. Do not use abrasive cleaners or solvents.
- **Battery Care:** The lithium ferrum battery is designed for long life. Avoid prolonged storage in extreme temperatures.
- **Inspection:** Periodically check the mounting screws for tightness and ensure the fixture is securely attached.

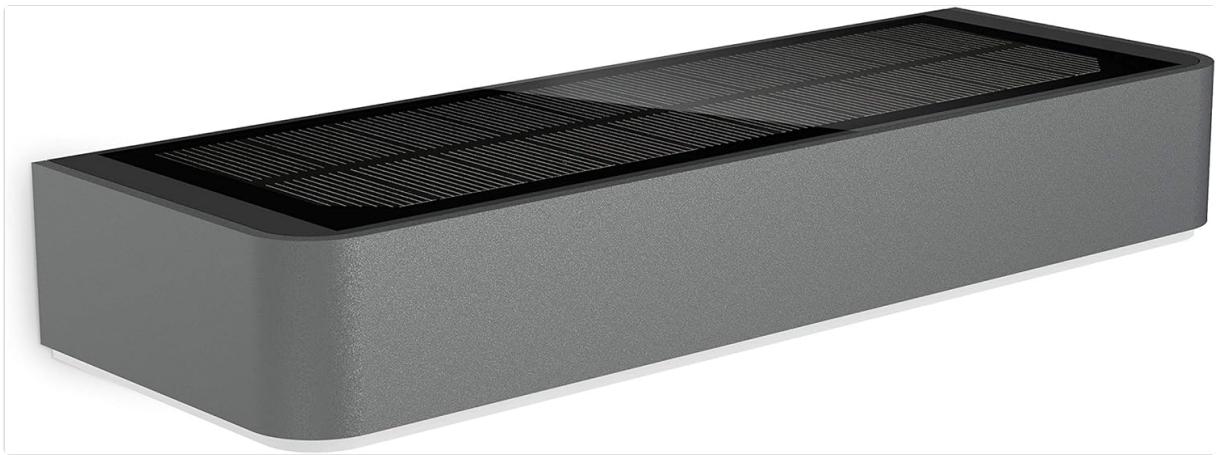


Figure 5: Top view highlighting the solar panel

7. TROUBLESHOOTING

If you encounter issues with your XSolar SOL-O S, refer to the following common problems and solutions:

Problem	Possible Cause	Solution
Light does not turn on at night.	Insufficient solar charge.	Ensure the solar panel is clean and receives direct sunlight for several hours daily. Perform an initial charge via micro USB if possible.
Light is dim or flickers.	Low battery charge.	Allow several days of full sunlight exposure for the battery to fully charge.
Motion sensor not detecting.	Detection area obstructed or incorrectly set.	Clear any obstructions from the sensor's field of view. Adjust the sensor cover trays to modify the detection area.
Light stays on constantly.	Continuous motion detected or incorrect program setting.	Check for constant movement in the detection zone. Review program settings for the night light function.

If the problem persists, contact customer support.

8. SPECIFICATIONS

Feature	Detail
Brand	Steinel
Model Name	XSolar SOL-O S
Model Number	052959
Colour	charcoal
Material	Plastic
Style	With motion sensor

Feature	Detail
Light Fixture Form	Wall
Room Type	Garden, Terrace
Product Dimensions (L x W x H)	24.5L x 9W x 5.3H centimetres
Specific Uses	Garden, Pathway, Terrace, House Entrance, House Number Lighting
Indoor/Outdoor Use	Outdoor
Power Source	Solar Powered (Off-grid lithium Ferrum battery 4000 mAh)
Control Method	Motion Sensor & Touch
Light Source	LED
Number of Light Sources	1
Light Color	Warm White
Brightness	273 Lumen (updated from product features)
Wattage	1.5 watts
Water Resistance Level	Water Resistant (IP44)
Connectivity Protocol	Infrared
Mounting Type	Wall Mount
Item Weight	0.56 Kilograms

9. WARRANTY AND SUPPORT

Steinel products are manufactured to high-quality standards and undergo strict quality control. This product comes with a standard manufacturer's warranty against defects in materials and workmanship. Please refer to the warranty card included in your package for specific terms and conditions.

For technical support, troubleshooting assistance, or warranty claims, please contact Steinel customer service through their official website or the retailer from whom the product was purchased.