

## Amerec 3210-270

# Amerec 3210-270 Thermostat PCA Instruction Manual

For C/SC-CONTROLS Sauna Heaters

## INTRODUCTION

---

This manual provides essential information for the proper installation, operation, and maintenance of the Amerec 3210-270 Thermostat PCA (Printed Circuit Board Assembly). This component is designed to work with Amerec C/SC-CONTROLS sauna heaters to accurately maintain the desired room temperature. Please read these instructions thoroughly before proceeding with installation or use.

## IMPORTANT SAFETY INFORMATION

---

**WARNING:** Electrical work should only be performed by qualified and licensed personnel. Failure to follow these instructions may result in electric shock, fire, or other hazards.

- Always disconnect power to the sauna heater and control unit before attempting any installation, maintenance, or repair.
- Ensure all wiring connections are secure and comply with local electrical codes.
- Do not operate the sauna heater with a damaged or improperly installed thermostat PCA.
- Keep this manual in a safe place for future reference.

## PRODUCT OVERVIEW

---

The Amerec 3210-270 Thermostat PCA is a critical component for regulating the temperature within your sauna. It is designed for seamless integration with specific Amerec C/SC-CONTROLS sauna heater models.

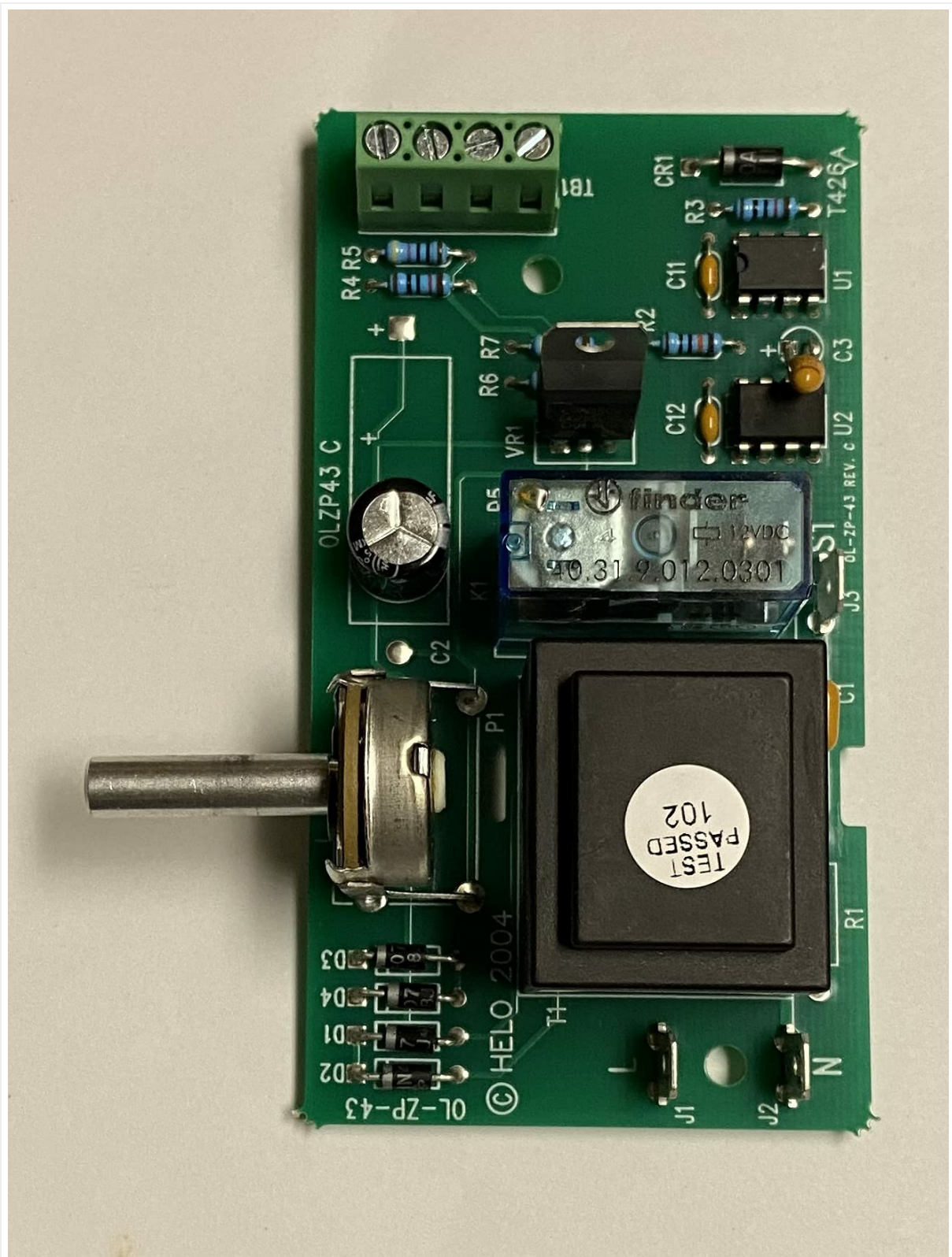


Image showing the Amerec 3210-270 Thermostat PCA, a green circuit board with various components.

## Compatibility

This Thermostat PCA is compatible with the following Amerec C/SC-CONTROLS sauna heater models:

- MODEL C103-60/SC-60
- MODEL C103-9/SC-9
- MODEL C105-P/SC-CLUB

## SETUP AND INSTALLATION

---

The Amerec 3210-270 Thermostat PCA is a replacement part for existing Amerec C/SC-CONTROLS sauna heaters. Installation should be performed by a qualified technician.

1. **Power Disconnection:** Before beginning, ensure that the main power supply to the sauna heater and control unit is completely disconnected at the circuit breaker. Verify with a voltage tester.
2. **Access Control Unit:** Carefully open the sauna control unit enclosure to access the existing thermostat PCA. Refer to your specific sauna heater's control unit manual for instructions on how to safely open the enclosure.
3. **Document Connections:** Before removing the old PCA, take clear photographs or make a detailed diagram of all existing wiring connections to the board. Note the color and position of each wire.
4. **Remove Old PCA:** Disconnect all wires from the old thermostat PCA. Carefully unmount the old board from its position within the control unit.
5. **Install New PCA:** Mount the new Amerec 3210-270 Thermostat PCA in the same location as the old one. Ensure it is securely fastened.
6. **Connect Wiring:** Reconnect all wires to the new PCA according to your documented photographs or diagram. Double-check each connection for accuracy and tightness.
7. **Close Control Unit:** Carefully close and secure the control unit enclosure.
8. **Restore Power:** Restore power to the sauna heater and control unit at the circuit breaker.
9. **Test Functionality:** Proceed to the "Operating Instructions" section to test the new thermostat PCA's functionality.

## OPERATING INSTRUCTIONS

---

Once the Amerec 3210-270 Thermostat PCA is installed, its operation is integrated with your existing Amerec C/SC-CONTROLS sauna heater control panel. The PCA works to maintain the temperature set on the control panel.

- **Power On:** Ensure the sauna heater and control unit are powered on.
- **Set Temperature:** Use the temperature control knob or buttons on your sauna's main control panel to set the desired sauna temperature.
- **Monitoring:** The thermostat PCA will continuously monitor the sauna's internal temperature and activate/deactivate the heating elements as needed to maintain the set temperature.
- **Automatic Operation:** The PCA operates automatically once the temperature is set. No further direct interaction with the PCA itself is required during normal operation.

For detailed instructions on how to use your specific Amerec C/SC-CONTROLS sauna heater control panel, please refer to the manual provided with your sauna heater.

## MAINTENANCE

---

The Amerec 3210-270 Thermostat PCA is designed for long-term reliability and typically requires minimal maintenance. However, periodic inspection is recommended.

- **Annual Inspection:** It is advisable to have a qualified technician inspect the sauna control unit, including the thermostat PCA, annually. This inspection should check for any signs of wear, corrosion, or loose connections.

- **Cleaning:** If the control unit enclosure is opened for inspection, ensure that the PCA and surrounding components are free from dust and debris. Use a soft, dry brush or compressed air for cleaning. Do not use liquids or abrasive cleaners.
- **Environmental Conditions:** Ensure the sauna control unit is kept within its specified operating environmental conditions to prevent damage to electronic components.

## TROUBLESHOOTING

---

If you experience issues with your sauna heater's temperature control after installing the Amerrec 3210-270 Thermostat PCA, consider the following common troubleshooting steps:

- **No Heat or Incorrect Temperature:**
  - Verify that the main power supply to the sauna heater is on.
  - Check the circuit breaker for the sauna heater.
  - Ensure all wiring connections to the PCA are secure and correct as per the installation steps.
  - Confirm that the temperature setting on the main control panel is correctly adjusted.
  - Inspect the temperature sensor (if external to the PCA) for damage or improper placement.
- **Control Panel Malfunction:**
  - If the main control panel is unresponsive, the issue might be with the control panel itself or its connection to the PCA, not necessarily the PCA.
  - Refer to your sauna heater's main control panel manual for specific troubleshooting steps.
- **Intermittent Operation:**
  - Loose connections can cause intermittent operation. Power off, open the control unit, and re-check all wiring.
  - Ensure the PCA is securely mounted and not subject to vibrations.

If these steps do not resolve the issue, it is recommended to contact a qualified service technician or Amerrec customer support for further assistance.

## SPECIFICATIONS

---

<b>Model Number:</b>	3210-270
<b>Brand:</b>	Amerrec
<b>Component Type:</b>	Thermostat PCA (Printed Circuit Board Assembly)
<b>Specific Uses:</b>	Saunas
<b>Compatibility:</b>	Amerrec C/SC-CONTROLS Sauna Heaters (Models C103-60/SC-60, C103-9/SC-9, C105-P/SC-CLUB)
<b>Power Source:</b>	Hardwire
<b>Connectivity Technology:</b>	Wi-Fi ( <i>Note: This refers to the overall control system's capability, not necessarily the PCA itself having Wi-Fi.</i> )
<b>Included Components:</b>	PC Board

**Color:**

Green

## WARRANTY AND SUPPORT

---

For information regarding the warranty of your Amerec 3210-270 Thermostat PCA, please refer to the warranty documentation provided with your original Amerec sauna heater or contact Amerec customer support directly. Warranty terms and conditions may vary.

### Customer Support

If you require technical assistance, have questions about installation, or need to report a defect, please contact Amerec customer support. You can typically find their contact information on the official Amerec website or in the documentation that came with your sauna heater.

*Always provide your product model number (3210-270) and the model of your sauna heater when contacting support.*