

BaBylissPRO FXFS2

BaBylissPRO METALFX Double Foil Shaver (Model FXFS2) Instruction Manual

Model: FXFS2 | Brand: BaBylissPRO

1. INTRODUCTION AND OVERVIEW

The BaBylissPRO FOILFX cordless shaver is a professional-grade, compact electric foil shaver designed for an extra-close shave. It features a durable metal housing and a hypoallergenic double-foil system.

This manual provides essential information for the safe and effective use, maintenance, and care of your BaBylissPRO METALFX Double Foil Shaver.



Figure 1: BaBylissPRO METALFX Double Foil Shaver (Silver model).

2. KEY FEATURES

- **Hypoallergenic Double-Foil System:** Designed for sensitive skin, providing a close and comfortable shave.
- **Powerful High-Speed Motor:** Ensures efficient and consistent performance.
- **Cordless Operation:** Offers flexibility and ease of use with up to 3 hours of runtime on a full charge.
- **Auto Shutoff:** The shaver automatically turns off when the protective cover is closed, conserving battery life and ensuring safety.
- **Durable Metal Housing:** Provides a robust and comfortable grip.



Figure 2: The hypoallergenic double foils are suitable for sensitive skin, providing a smooth finish.

3. SETUP

3.1 Initial Charging

1. Before first use, ensure the shaver is fully charged. Connect the charging cord to the shaver and a suitable power outlet.
2. A full charge typically takes approximately 3 hours. The indicator light will show charging status.

3.2 Attaching/Removing the Protective Cover

- To attach, align the cover with the shaver head and gently push until it clicks into place.
- To remove, gently pull the cover away from the shaver head.

CORDLESS

Cordless shave with 3-hour runtime and hygienic, hypoallergenic foils.



Figure 3: Connecting the charging cord to the shaver.

4. OPERATING INSTRUCTIONS

For optimal results and to prevent skin irritation, follow these guidelines:

1. Ensure the shaver is fully charged before use.
2. Hold the shaver at a right angle (90 degrees) against the skin.
3. Move the shaver slowly and steadily against the direction of hair growth.
4. Avoid pressing too hard, as excessive pressure can damage the foils and cause skin irritation.
5. For best results, especially on longer hair, it is recommended to first trim hair to a short stubble (approximately 1/32 inch long) using a clipper before using the foil shaver.

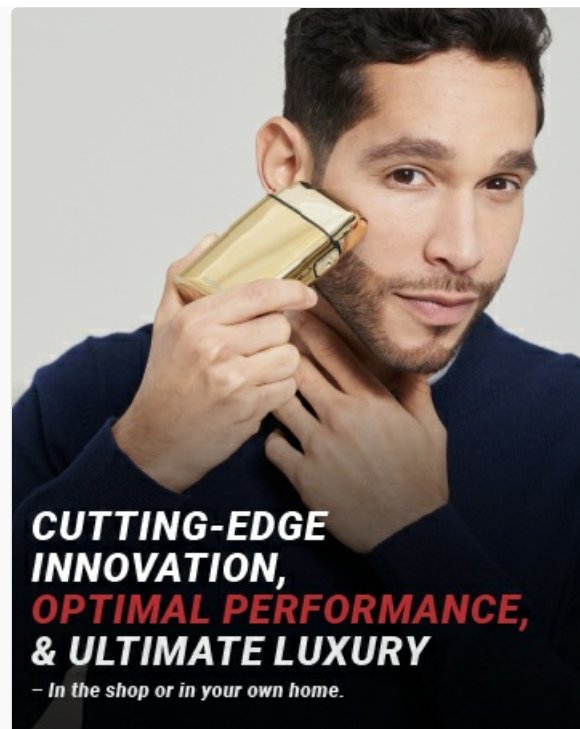


Figure 4: Proper technique for using the shaver on the face.

BABYLISSPRO		GENERIC
	VS	
<ul style="list-style-type: none"> ✓ PRECISE SHAVES ✓ EASY TO USE & CLEAN ✓ EVEN FINISH ✓ LONG LASTING LITHIUM-ION BATTERY ✓ HYPOALLERGENIC TITANIUM FOILS ✓ HIGH-SPEED MOTOR 		<ul style="list-style-type: none"> ✗ UNPREDICTABLE SHAVING PERFORMANCE ✗ DIFFICULT TO CLEAN ✗ UNCOMFORTABLE SHAPE ✗ POOR BATTERY LIFE ✗ STANDARD FOILS ✗ AVERAGE MOTOR

Figure 5: The cordless design allows for flexible use on various areas like the neck.

BaByliss*PRO*

PRO TIP

The Double-Foil Shaver works best on stubble* – start with a Trimmer to create short stubble before switching to the Shaver.



*Hair that is $\frac{1}{32}$ inch long

Figure 6: Pro tip for optimal shaving: use on short stubble.

5. MAINTENANCE

5.1 Cleaning the Shaver

Regular cleaning ensures optimal performance and hygiene. The shaver is easy to disassemble for cleaning.

1. Ensure the shaver is turned off and unplugged from any power source.
2. Remove the foil head assembly by gently pressing the release buttons (if applicable) or pulling it off.
3. Use the included cleaning brush to remove any trapped hair from the foils and cutter blades.
4. Do not rinse the foils or cutter blades under water unless explicitly stated as waterproof in the product specifications.
5. Reassemble the shaver by aligning the foil head assembly and pressing it back into place until it clicks.



EASY CLEANING

Easy to disassemble for cleaning – cleaning brush included

Figure 7: Disassembling the shaver for easy cleaning with the provided brush.

6. TROUBLESHOOTING

Problem	Possible Cause	Solution
Shaver not turning on.	Low battery or not charged.	Charge the shaver fully (approx. 3 hours). Ensure the charging cable is securely connected.
Poor shaving performance / Not a close shave.	Hair too long, foils/blades dull or dirty, incorrect technique.	Pre-trim longer hair to stubble. Clean foils and blades. Ensure shaver is held at a 90-degree angle against the skin and moved against hair growth. Consider replacing foils/blades if dull.
Skin irritation or pulling.	Excessive pressure, dull foils/blades, or hair too long.	Apply less pressure. Ensure hair is short stubble. Replace foils/blades if worn.
Shaver stops unexpectedly.	Low battery or auto shutoff activated.	Recharge the shaver. Ensure the protective cover is not accidentally closing during use.

7. SPECIFICATIONS

- **Model Number:** FXFS2
- **Brand:** BaBylissPRO
- **Power Source:** Battery Powered (Cordless)
- **Special Features:** Cordless, Hypoallergenic Foils, Auto Shutoff
- **Recommended Uses:** Face, Head, Beard, Neck
- **Product Dimensions:** 18.75 x 8 x 9 inches; 1 Pound
- **UPC:** 074108380241

8. WARRANTY AND SUPPORT

The BaBylissPRO METALFX Double Foil Shaver typically comes with a manufacturer's warranty. Based on user feedback, BaBylissPRO provides a 2-year warranty for this product. Please refer to the warranty card included with your purchase for specific terms, conditions, and registration details.

For technical support, replacement parts, or warranty claims, please contact BaBylissPRO customer service through their official website or the contact information provided in your product packaging.