

Yaheetech B07KLTXPZP

Yaheetech Interlocking Patio Deck Tiles User Manual

Model: B07KLTXPZP

Brand: Yaheetech

INTRODUCTION

This manual provides essential information for the installation, usage, and maintenance of your Yaheetech Interlocking Patio Deck Tiles. These 12 x 12 inch wood floor tiles are designed for outdoor flooring applications, offering a durable and aesthetically pleasing solution for patios, gardens, decks, and poolside areas.

SAFETY INFORMATION

- Ensure the installation surface is clean and free from debris to prevent tripping hazards.
- While the tiles are designed to be anti-skidding, exercise caution when wet.
- Do not use damaged tiles. Inspect all tiles before installation.
- Keep out of reach of children during installation to prevent accidental injury from tools or small parts.

PACKAGE CONTENTS

Your package should contain the following items:

- 27 x Yaheetech Interlocking Patio Deck Tiles (12" x 12" x 1" Brown)



Image: Stack of 27 brown interlocking patio deck tiles, ready for installation.

SETUP AND INSTALLATION

The Yaheetech Interlocking Patio Deck Tiles feature a quick and easy interlocking design, requiring no tools for basic assembly. Follow these steps for installation:

1. **Prepare the Surface:** Ensure the surface where the tiles will be laid is clean, dry, and relatively level. While the tiles can be placed on various hard surfaces like cement, wood, or carpet, a smooth base will yield the best results.
2. **Interlock the Tiles:** Each tile has interlocking snaps on its plastic base. Align the male and female connectors of adjacent tiles.
3. **Snap Together:** Gently press or step on the tiles to snap them securely into place. You should hear a click as they connect.
4. **Arrange Patterns:** The tiles can be arranged in various patterns (e.g., straight lines, checkerboard, herringbone) to suit your aesthetic preference.
5. **Cutting Tiles (Optional):** For custom fits around corners, poles, or irregular shapes, the plastic base can be cut with a utility knife, and the wood slats can be cut with a saw.

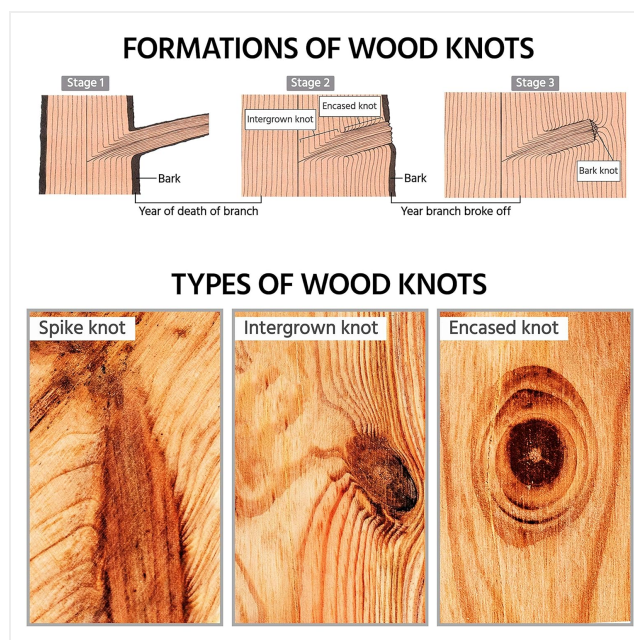


Image: An exploded view illustrating the fir wood top and the durable plastic interlocking base of the tile.

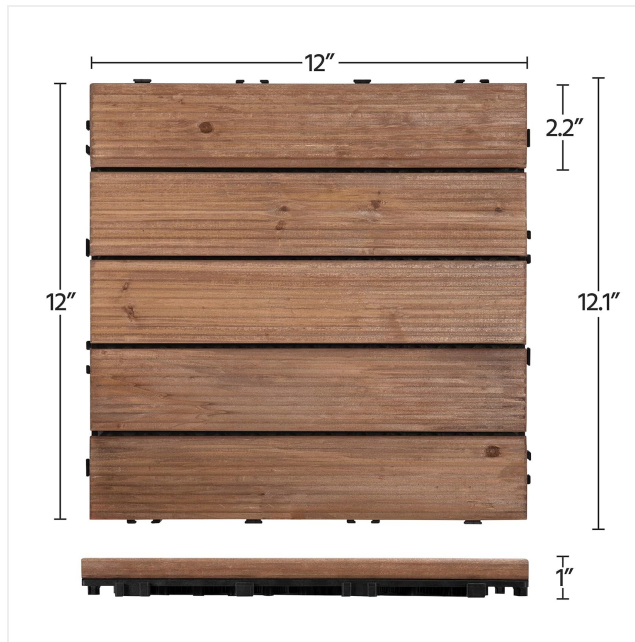


Image: A diagram demonstrating various patterns that can be created by interlocking the tiles, including straight and diagonal arrangements.



Video: Official Yaheetech video demonstrating the interlocking assembly process and various layout possibilities for the wood flooring tiles.



Video: A short demonstration showing the ease of assembly for the interlocking deck tiles, highlighting the simple snap-together mechanism.

OPERATING AND USAGE

These interlocking deck tiles are versatile and can be used in a variety of outdoor and even some indoor settings. Their primary function is to provide a quick and easy flooring solution that enhances the aesthetic and functionality of your space.

- **Patio and Deck Areas:** Transform concrete patios or worn decks into inviting outdoor living spaces.
- **Garden Paths:** Create attractive and stable pathways through gardens or grassy areas.
- **Poolside:** Provide a comfortable and slip-resistant surface around swimming pools.
- **Balconies:** Upgrade apartment balconies with a natural wood look.
- **Temporary Flooring:** Ideal for temporary events or seasonal use due to their easy installation and removal.



Image: A beautifully tiled patio featuring the interlocking deck tiles, complete with outdoor seating, demonstrating a typical application.

MAINTENANCE

To ensure the longevity and appearance of your fir wood deck tiles, regular maintenance is recommended:

- **Regular Cleaning:** Sweep or hose down the tiles regularly to remove dirt, leaves, and other debris. The gaps between the slats allow for adequate drainage.
- **Deep Cleaning:** For stubborn dirt, use a mild soap solution and a soft brush. Rinse thoroughly with water.
- **Wood Treatment:** When used outdoors, it is highly recommended to treat the tiles at least twice a year with wood oil or other suitable maintenance products. This will help protect the wood from weathering, maintain its color, and extend its service life.
- **Winter Storage (Optional):** In areas with harsh winters, consider disassembling and storing the tiles indoors or covering them to protect them from extreme conditions.

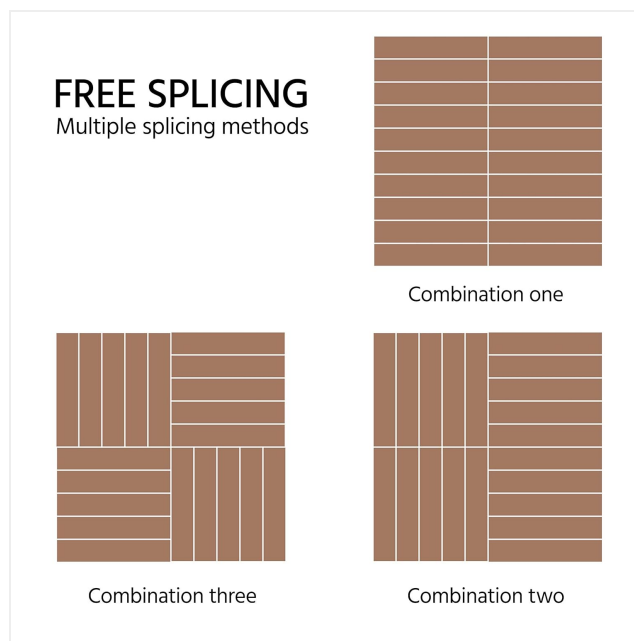


Image: A close-up view showing how the plastic base of the tile can be cut to fit specific shapes or corners, allowing for customization.

TROUBLESHOOTING

Here are some common issues and their solutions:

Problem	Possible Cause	Solution
Tiles do not interlock easily.	Connectors are misaligned or debris is present.	Ensure connectors are perfectly aligned. Clear any debris from the connectors. Apply gentle pressure.
Tiles appear uneven after installation.	The underlying surface is uneven.	For best results, install on a level surface. Minor unevenness may be acceptable, but significant variations can cause instability.
Tiles need to fit an irregular shape.	Standard tile size does not fit the area.	Tiles can be cut to size. Use a utility knife for the plastic base and a saw for the wood slats.



Image: A close-up view showing how the plastic base of the tile can be cut to fit specific shapes or corners, allowing for customization.

SPECIFICATIONS

Feature	Detail
Brand	Yaheetech
Model Number	Yaheetech (B07KLTXPZP)
Material	Fir wood and PP base
Color	Brown
Product Dimensions	12.13 x 12.13 x 0.87 inches (per tile)
Item Weight	Approx. 30.82 Pounds (for 27 tiles)
Quantity	27 pieces per pack
Special Features	Interlocking design, Anti-skidding grooves, Tight connection with tapping screws, High-temperature drying process for wood.

WARRANTY AND SUPPORT

For specific warranty information and customer support, please refer to the manufacturer's official website or contact their customer service directly. Keep your purchase receipt for any warranty claims.

Manufacturer: Yaheetech

For further assistance, visit the [Yaheetech Store on Amazon](#).

