

Sharper Image B07KGMDK96

Sharper Image Motion Activated Candy Dispenser User Manual

Model: B07KGMDK96

INTRODUCTION

This manual provides instructions for the Sharper Image Motion Activated Candy Dispenser. This device is designed to dispense small, hard-shelled candies, nuts, and snacks using a touchless motion sensor, promoting hygiene and convenience. It is suitable for use in various settings, including homes and offices.

IMPORTANT SAFETY INFORMATION

- This product is not intended for use by children under 12 years of age.
- The dispenser is designed for small, dry food items only. Do not use with liquids or sticky substances.
- Store the dispenser in a cool, dry area to maintain optimal performance and food quality.
- Ensure batteries are inserted correctly according to polarity markings. Do not mix old and new batteries, or different types of batteries.
- Remove batteries if the dispenser will not be used for an extended period to prevent leakage.

PACKAGE CONTENTS

- 1x Sharper Image Motion Activated Candy Dispenser Unit
- User Manual

Note: 4 "AA" batteries are required and not included. An optional 6V DC 0.5A (300mA) AC power adapter is also not included.

SETUP

1. Battery Installation

1. Locate the battery compartment on the underside of the dispenser base.
2. Open the battery compartment cover.
3. Insert 4 "AA" batteries (not included), ensuring correct polarity (+/-) as indicated inside the compartment.
4. Close the battery compartment cover securely.

Alternatively, an optional 6V DC 0.5A (300mA) AC power adapter can be used (not included).

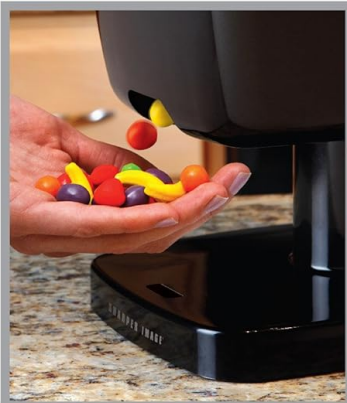
2. Filling the Dispenser

1. Before first use, clean the transparent container thoroughly.
2. Remove the lid from the top of the dispenser.
3. Carefully pour your desired treats into the container. Ensure the items are suitable for dispensing (see "Operating Instructions" for details).
4. Replace the lid securely.

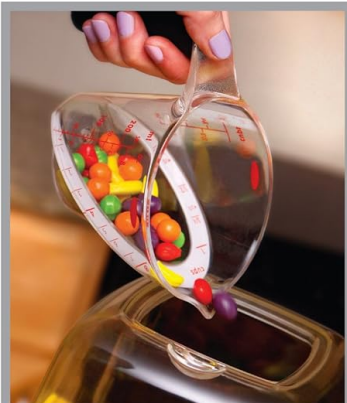
MOTION ACTIVATED CANDY DISPENSER

FEATURES

- DISPENSES CANDY AND OTHER TREATS INTO YOUR HAND AUTOMATICALLY VIA TOUCHLESS MOTION SENSOR
- LARGE-VOLUME CANISTER STORES POUNDS OF YOUR FAVORITE SNACKS
- CONTEMPORARY DESIGN IDEAL FOR YOUR KITCHEN OR WORKPLACE
- SPECIALLY DESIGNED FOR USE WITH HARD OR SEMI-HARD CANDY UP TO ONE HALF INCH IN SIZE



BUILT-IN SENSOR FOR TOUCHLESS CONTROL



HOLDS MOST OF YOUR FAVORITE CANDIES

Requires 4 "AA" batteries (not included). Optional AC power adapter not included. The manufacturer recommends using only a UL-certified OUTPUT DC 6.0V 500mA  AC adapter. Colors and styles may vary. Clean the container before filling with candy. NOTE: Not intended for children under 12 years old.



Figure 1: Filling the dispenser with treats.

OPERATING INSTRUCTIONS

Using the Motion Sensor

1. Place your hand directly under the dispensing chute.
2. The built-in motion sensor will detect your hand and activate the dispensing mechanism.
3. Hold your hand under the chute for a moment to allow the treats to dispense. The amount dispensed may vary. If no treats dispense on the first attempt, briefly remove your hand and place it back under the sensor.



Figure 2: Hands-free dispensing in action.

Disabling Dispensing (Hidden Button)

A hidden button is located on the back of the dispenser. Pressing this button will temporarily disable the dispensing function, preventing treats from being dispensed even when the motion sensor is activated. Press it again to re-enable dispensing.

Recommended Items for Dispensing

For optimal performance, use items that are hard-shelled, dry, and approximately 0.75 inches (1.9 cm) or smaller in size. Examples include:

- Small Gumballs
- Hard shell, chocolate coated candy (e.g., M&M's)
- Hard shell, fruit flavored candy
- Hazelnuts
- Jelly beans
- Small Jawbreakers
- Macadamia nuts
- Pine nuts
- Shelled, unsalted peanuts

- Shelled Pistachios
- Small Jordan almonds
- Soy nuts
- Sunflower seeds
- Whole Almonds
- Salted Peanuts

Items NOT Recommended for Dispensing

Avoid using the following items to prevent blockages or damage to the dispenser:

- Candy that is wrapped
- Candy that has a soft chocolate coating
- Candy that is cylindrically or barrel-shaped
- Candy that is gummy
- Raisins or similar dried fruit
- Candy that is sticky
- Items larger than 0.75 inches (1.9 cm)
- Metal objects

SHARPER IMAGE®

The following candies and nuts are recommended to use in your Motion-Activated Candy Dispenser:



- Small Gum balls
- Hard shell, chocolate coated candy
- Hard shell, fruit flavored candy
 - Hazelnuts
 - Jelly beans
- Small Jawbreakers
- Macadamia nuts
- Pine nuts
- Shelled, unsalted peanuts
- Shelled Pistachios
- Small Jordan almonds
 - Soy nuts
- Sunflower seeds
- Whole Almonds
- Salted Peanuts

MOTION ACTIVATED CANDY DISPENSER

The following items are NOT recommended to use in your Motion-Activated Candy Dispenser:



- Candy that is wrapped
- Candy that has a soft chocolate coating
- Candy that is cylindrically, barrel-shaped
 - Candy that is gummy
- Raisins or similar dried fruit
- Candy that is sticky
- Items that are larger than .75" in.
 - Metal objects

Candy Dispenser is only for small items and not for liquid use. Please store Dispenser in a cool temperature & dry area. Please read instruction manual before operating.





Figure 3: Guide for suitable and unsuitable items.

MAINTENANCE

Cleaning

- To clean the dispenser, first ensure it is empty of all treats and batteries are removed.
- Wipe the exterior surfaces with a soft, damp cloth.
- The transparent container can be detached and washed with mild soap and water. Ensure it is completely dry before reassembling and refilling.
- Do not immerse the base unit in water or place it in a dishwasher.

Storage

When not in use, store the dispenser in a cool, dry place away from direct sunlight and moisture. Remove batteries if storing for an extended period.

TROUBLESHOOTING

Dispenser Not Activating or Dispensing

- **Check Batteries:** Ensure batteries are correctly installed and have sufficient charge. Replace with fresh "AA" batteries if necessary.
- **Sensor Obstruction:** Verify that the motion sensor area is clean and free from obstructions.
- **Hand Placement:** Ensure your hand is placed directly under the sensor and held steady for a moment.
- **Hidden Button:** Check if the hidden button on the back of the dispenser has been pressed, disabling the dispensing function. Press it again to re-enable.

Treats Not Dispensing Properly or Getting Stuck

- **Item Suitability:** Confirm that the items being dispensed are suitable for the dispenser (refer to "Recommended Items" section). Avoid sticky, wrapped, or oversized items.
- **Overfilling:** Do not overfill the dispenser, as this can impede the dispensing mechanism.
- **Blockage:** Gently shake the dispenser or use a soft, non-abrasive tool to clear any blockages in the chute.

Short Battery Life

- **Battery Quality:** Use high-quality alkaline batteries for best performance and longevity.
- **Usage Frequency:** Frequent use will naturally deplete batteries faster. Consider using an optional AC adapter for continuous power if available.

SPECIFICATIONS

Brand:

Sharper Image

Model:	B07KGMDK96
Material:	Plastic
Color:	Black
Dimensions (H x W x D):	Approximately 13.125 in. x 6.00 in. x 6.75 in. (33.3 cm x 15.2 cm x 17.1 cm)
Power Source:	4 "AA" batteries (not included) or optional 6V DC 0.5A (300mA) AC adapter (not included)
Max Item Size:	Up to 0.5 inches (1.27 cm) in size (for optimal dispensing)



Figure 4: Product dimensions.

WARRANTY AND SUPPORT

For warranty information or technical support, please refer to the contact details provided with your product packaging or visit the official Sharper Image website. Keep your purchase receipt as proof of purchase.

