

[Manuals.plus](#) /

› [Sharper Image](#) /

› Sharper Image Motion Activated Candy Dispenser Instruction Manual

Sharper Image B07KGLJZD1

Sharper Image Motion Activated Candy Dispenser Instruction Manual

Model: B07KGLJZD1

INTRODUCTION

This manual provides essential instructions for the safe and efficient operation, setup, and maintenance of your Sharper Image Motion Activated Candy Dispenser. Please read this manual thoroughly before using the product and retain it for future reference.

PRODUCT OVERVIEW AND FEATURES

The Sharper Image Motion Activated Candy Dispenser offers a touchless way to dispense various snacks. Its design is suitable for home or office environments.

The following candies and nuts are recommended to use in your Motion-Activated Candy Dispenser:



- Small Gum balls
- Hard shell, chocolate coated candy
- Hard shell, fruit flavored candy
 - Hazelnuts
 - Jelly beans
- Small Jawbreakers
- Macadamia nuts
 - Pine nuts
- Shelled, unsalted peanuts
 - Shelled Pistachios
- Small Jordan almonds
 - Soy nuts
- Sunflower seeds
- Whole Almonds
- Salted Peanuts



The following items are NOT recommended to use in your Motion-Activated Candy Dispenser:



- Candy that is wrapped
- Candy that has a soft chocolate coating
- Candy that is cylindrically, barrel-shaped
 - Candy that is gummy
- Raisins or similar dried fruit
 - Candy that is sticky
- Items that are larger than .75" in.
 - Metal objects

Candy Dispenser is only for small items and not for liquid use. Please store Dispenser in a cool temperature & dry area. Please read instruction manual before operating.



Image: The Sharper Image Motion Activated Candy Dispenser, a red base with a clear top filled with colorful candies, showcasing its overall design.

- Dispenses small gumballs, peanuts, jelly beans, and similar items.
- Features a touch-free motion sensor for activation.
- Operates on batteries or an optional AC adapter.
- Easy-to-fill plastic canister.
- Designed to help prevent the spread of germs through touchless operation.



SHARPER IMAGE®

MOTION ACTIVATED CANDY DISPENSER

FEATURES



DISPENSE GUMBALLS, PEANUTS
AND MORE



TOUCH-FREE MOTION SENSOR



CONVENIENT BATTERY OPERATION



CONTEMPORARY DESIGN FOR
HOME OR OFFICE



REQUIRES 4 "AA" BATTERIES
(NOT INCLUDED)



EASY TO FILL



HELP PREVENT SPREAD OF GERMS

Image: The Sharper Image Motion Activated Candy Dispenser in red, highlighting its key features such as dispensing various treats, touch-free motion sensor, battery operation, contemporary design, battery requirements, easy filling, and germ prevention.

SAFETY INFORMATION

- This product is not intended for children under 12 years old.
- Store the dispenser in a cool, dry area.
- Hand wash only. Do not immerse the electronic components in water.
- Do not use in a microwave or dishwasher.

SETUP

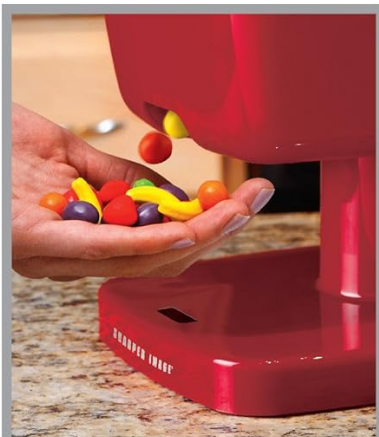
1. **Initial Cleaning:** Before first use, disassemble the dispenser and hand wash the non-electronic parts with mild detergent or wipe them down with a damp cloth. Ensure all parts are dry before reassembly. Refer to the "Maintenance" section for disassembly instructions.
2. **Power Installation:**

- **Batteries:** Insert 4 "AA" batteries (not included) into the battery compartment located at the base of the unit. Ensure correct polarity.
- **AC Adapter (Optional):** For continuous power, you may use a UL-certified DC 6.0V 500mA AC adapter (not included). Plug the adapter into the DC socket at the rear of the unit.

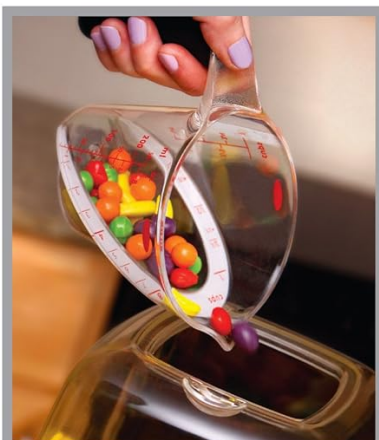
3. Filling the Canister:

Remove the lid from the top of the dispenser. Fill the clear plastic canister with your desired snacks. The dispenser holds approximately 12.5 cups (500 milliliters) of snacks. Replace the lid securely.

SHARPER IMAGE®



BUILT-IN SENSOR FOR TOUCHLESS CONTROL



HOLDS MOST OF YOUR FAVORITE CANDIES

MOTION ACTIVATED CANDY DISPENSER

FEATURES

- DISPENSES CANDY AND OTHER TREATS INTO YOUR HAND AUTOMATICALLY VIA TOUCHLESS MOTION SENSOR
- LARGE-VOLUME CANISTER STORES POUNDS OF YOUR FAVORITE SNACKS
- CONTEMPORARY DESIGN IDEAL FOR YOUR KITCHEN OR WORKPLACE
- SPECIALLY DESIGNED FOR USE WITH HARD OR SEMI-HARD CANDY UP TO ONE HALF INCH IN SIZE



Requires 4 "AA" batteries (not included). Optional AC power adapter not included. The manufacturer recommends using only a UL-certified OUTPUT DC 6.0V 500mA ⚡ AC adapter. Colors and styles may vary. Clean the container before filling with candy. NOTE: Not intended for children under 12 years old.

Image: A hand pouring colorful candies into the clear canister of the Sharper Image Motion Activated Candy Dispenser, demonstrating the easy-fill process.

- 4. Placement:** Place the dispenser on a level surface. An additional button/switch located beneath the unit base must be depressed for operation. This ensures the unit sensor only triggers when the unit is standing upright.

OPERATING INSTRUCTIONS

- 1. Power On:** Locate the power button on the rear of the unit and press it to turn the dispenser on.
- 2. Dispensing Snacks:** Wave your hand or place a dish under the dispenser's chute to activate the motion sensor. The dispenser will release a random amount of snacks. The quantity dispensed depends on the snack size and how long your

hand is held under the sensor.



Image: A hand placed under the chute of the Sharper Image Motion Activated Candy Dispenser, illustrating the touchless motion detection feature for dispensing candies.

3. Recommended Snacks:

For optimal performance, use hard or semi-hard candies, nuts, and snacks up to approximately 0.5 inches in size. Examples include:

- Small Gumballs
- Hard shell, chocolate coated candy (e.g., M&Ms, Skittles)
- Hard shell, fruit flavored candy
- Hazelnuts, Macadamia nuts, Pine nuts
- Jelly beans
- Small Jawbreakers
- Shelled, unsalted peanuts, Shelled Pistachios
- Small Jordan almonds, Soy nuts, Sunflower seeds
- Whole Almonds, Salted Peanuts
- Cereals, dry pet food/kibble (of similar particle/hardness)

4. Not Recommended Snacks:

Avoid using the following types of items as they may clog the chute or not dispense properly:

- Candy that is wrapped
- Candy with a soft chocolate coating
- Candy that is cylindrically or barrel-shaped
- Gummy candy
- Raisins or similar dried fruit
- Sticky candy
- Items larger than 0.75 inches
- Metal objects



Image: A visual guide illustrating various types of candies and nuts, categorizing them as recommended or not recommended for use with the Sharper Image Motion Activated Candy Dispenser. Examples of recommended items include M&Ms, jelly beans, and peanuts, while wrapped candies and gummy items are not recommended.

MAINTENANCE

Regular cleaning ensures hygienic operation and extends the life of your dispenser.

1. Disassembly for Cleaning:

- First, ensure the unit is powered off and unplugged if using an AC adapter.
- **Important:** Unscrew and remove the thumbscrew located on the rear of the clear part of the hopper before attempting to separate the hopper components. Failure to do so may cause damage.
- Carefully take apart the dispenser according to the included instructions (refer to product packaging for visual guide if available).

2. **Cleaning:** Hand wash the clear canister and other non-electronic parts with a bit of mild detergent and warm water. Wipe down the base and electronic components with a damp cloth. Do not submerge the base in water.

3. **Drying and Reassembly:** Ensure all parts are completely dry before reassembling the dispenser. Reassemble in reverse order of disassembly, ensuring the thumbscrew is securely fastened.

TROUBLESHOOTING

Problem	Possible Cause	Solution
Dispenser does not activate or dispense.	<ul style="list-style-type: none">• Unit is not powered on.• Batteries are low or incorrectly installed.• AC adapter is not connected or faulty.• Base button is not depressed.	<ul style="list-style-type: none">• Press the power button on the rear.• Check battery installation and replace if necessary.• Ensure AC adapter is properly connected and functional.• Ensure the unit is placed on a level surface, depressing the button beneath the base.
Snacks are not dispensing properly or chute is clogged.	<ul style="list-style-type: none">• Using non-recommended snacks (soft, wrapped, sticky, or too large).• Snack particle size is inconsistent.	<ul style="list-style-type: none">• Refer to the "Recommended Snacks" section and use appropriate items.• Clear any clogs by disassembling and cleaning the chute.
Sensor triggers unpredictably.	<ul style="list-style-type: none">• Reflective surfaces near the sensor.	<ul style="list-style-type: none">• Relocate the dispenser away from highly reflective surfaces.
Inconsistent dispensing amounts.	<ul style="list-style-type: none">• This is normal operation.	<ul style="list-style-type: none">• The dispenser is designed to release random amounts based on snack size and sensor activation duration. Multiple activations may be needed for larger quantities.

SPECIFICATIONS

Model Number	B07KGLJZD1
Brand	Sharper Image
Material	Plastic

Color	Red
Capacity	Approximately 12.5 cups / 500 Milliliters
Power Source	4 "AA" batteries (not included) or DC 6.0V 500mA AC adapter (not included)
Dimensions (Approximate)	13.125 inches (Height) x 6.00 inches (Width) x 6.75 inches (Depth)
Care Instructions	Hand Wash Only



Image: A diagram showing the approximate dimensions of the Sharper Image Motion Activated Candy Dispenser: 13.125 inches in height, 6.00 inches in width, and 6.75 inches in depth.

WARRANTY AND SUPPORT

For warranty information or product support, please refer to the documentation included with your purchase or contact Sharper Image customer service. Contact details can typically be found on the official Sharper Image website or product packaging.



© 2024 Sharper Image. All rights reserved.