

## Manuals+

[Q & A](#) | [Deep Search](#) | [Upload](#)

manuals.plus /

› [MONDIAL](#) /

› [Mondial Fast Cook FE-04 Electric Stove Instruction Manual](#)

## MONDIAL FE-04

# Mondial Fast Cook FE-04 Electric Stove Instruction Manual

Model: FE-04 | Brand: MONDIAL

## INTRODUCTION

This manual provides essential information for the safe and efficient use of your Mondial Fast Cook FE-04 Electric Stove. Please read all instructions carefully before operating the appliance and retain this manual for future reference.

## IMPORTANT SAFETY INSTRUCTIONS

To reduce the risk of fire, electric shock, or injury, always follow basic safety precautions:

- Ensure the appliance voltage (220V) matches your electrical outlet.
- Do not immerse the appliance, cord, or plug in water or other liquids.
- Always supervise children when the appliance is in use.
- Do not operate the appliance with a damaged cord or plug.
- Place the stove on a stable, heat-resistant surface, away from flammable materials.
- Allow the appliance to cool completely before cleaning or storing.
- Do not touch hot surfaces. Use handles or knobs.
- Unplug from the outlet when not in use and before cleaning.
- This appliance is for household use only.

## PRODUCT OVERVIEW

The Mondial Fast Cook FE-04 is a compact and portable electric stove designed for quick heating without gas. It features a single heating plate and a temperature control knob.



Figure 1: Top view of the Mondial Fast Cook FE-04 Electric Stove, showing the single heating plate and control knob.

**Heating Plate:** Rapid heating element.

**Temperature Control Knob:** Adjusts heat settings.

**Indicator Light:** Illuminates when the stove is heating.

**Stainless Steel Body:** Durable and easy to clean.

## SETUP

1. **Unpacking:** Carefully remove the electric stove from its packaging. Retain packaging for storage or transport.
2. **Placement:** Place the stove on a flat, stable, and heat-resistant surface. Ensure there is adequate ventilation around the appliance. Keep it away from walls, curtains, and other flammable materials.
3. **Power Connection:** Ensure the temperature control knob is in the "OFF" position. Plug the power cord into a grounded 220V electrical outlet.

⚡ POTÊNCIA  
1000W



## COMPACTO E PORTÁTIL

Chapa com aquecimento rápido e sem utilização de gás

Figure 2: The compact and portable design of the electric stove, highlighting its 1000W power and gas-free operation.

### OPERATING INSTRUCTIONS

1. **Preparation:** Place your cookware (pots or pans suitable for electric stoves) directly onto the heating plate.
2. **Power On and Temperature Selection:** Turn the temperature control knob clockwise from the "OFF" position to your desired heat setting. The indicator light will illuminate, signaling that the heating plate is active.
3. **Temperature Settings:** The stove offers 6 temperature adjustments. Start with a lower setting and gradually increase as needed for your recipe.



## CONTROLE DE TEMPERATURA

São 6 ajustes: escolha o ideal para cada preparo

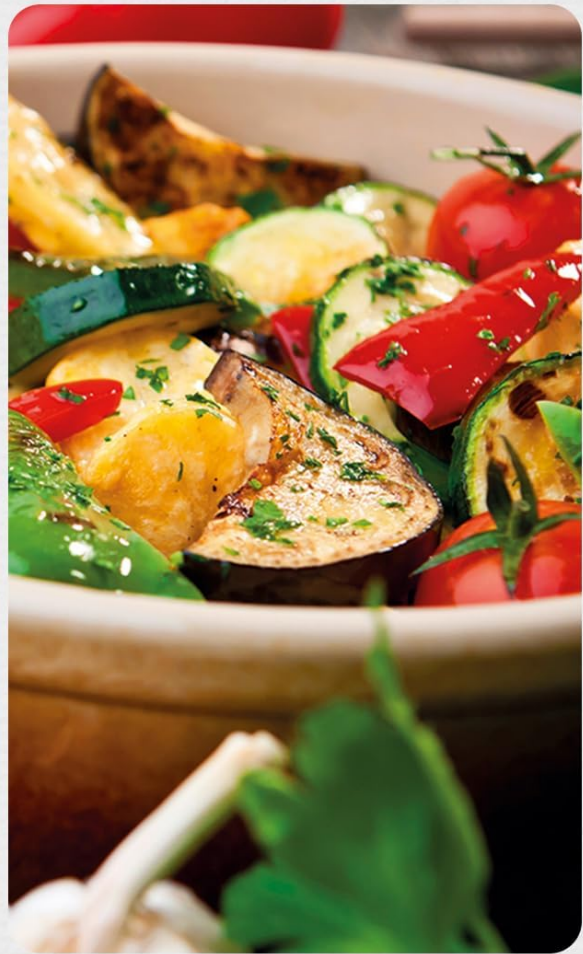


## ACABAMENTO EM AÇO INOX

Mais resistente, durável e de fácil limpeza

**Figure 3:** Close-up of the temperature control knob and the stainless steel finish, illustrating the 6 heat settings.

4. **Cooking:** Monitor your food as it cooks. The heating plate will cycle on and off to maintain the selected temperature.
5. **Power Off:** Once cooking is complete, turn the temperature control knob counter-clockwise back to the "OFF" position. Unplug the appliance from the wall outlet.
6. **Cool Down:** Allow the heating plate to cool completely before touching or cleaning. The indicator light will turn off when the stove is no longer heating, but the surface will remain hot for some time.



## VERSATILIDADE NA COZINHA

Prepare carnes, massas, legumes, sopas e muito mais

Figure 4: The electric stove in use, demonstrating its versatility for preparing various dishes like meats, pasta, vegetables, and soups.

### CLEANING AND MAINTENANCE

Regular cleaning ensures optimal performance and extends the lifespan of your electric stove.

1. **Before Cleaning:** Always ensure the appliance is unplugged and has cooled down completely.
2. **Exterior Cleaning:** Wipe the stainless steel body with a soft, damp cloth. For stubborn stains, use a mild detergent. Avoid abrasive cleaners or scouring pads, as they can scratch the surface.
3. **Heating Plate Cleaning:** For spills on the heating plate, allow it to cool, then gently scrape off any dried food residue with a plastic scraper. Wipe with a damp cloth. Do not use harsh chemicals or immerse the plate in water.
4. **Storage:** Store the appliance in a dry place when not in use.

### TROUBLESHOOTING

Problem	Possible Cause	Solution
Stove does not heat up.	Not plugged in; power outlet malfunction; temperature knob in "OFF" position.	Ensure the stove is securely plugged into a working 220V outlet. Turn the temperature knob to a heat setting. Check your circuit breaker.
Indicator light is off, but stove is hot.	Normal operation; thermostat cycling.	The indicator light turns off when the heating element reaches the set temperature and cycles on/off to maintain it. This is normal.
Food is not cooking evenly.	Cookware not flat; incorrect temperature setting.	Use flat-bottomed cookware. Adjust the temperature setting as needed.

If the problem persists after attempting these solutions, please contact customer support.

## TECHNICAL SPECIFICATIONS

---

**Model:** FE-04

**Brand:** MONDIAL

**Power:** 1000W

**Voltage:** 220 Volts

**Number of Burners:** 1

**Material:** Stainless Steel

**Dimensions (Product):** 24.5 cm (Depth) x 22.5 cm (Width) x 7 cm (Height)

**Weight:** Approximately 1.33 kg

**Special Features:** Electric, 6 temperature adjustments, indicator light.

**Inmetro Registration:** BRA18/02081

1,3kg

*Fast Cook*



Figure 5: Dimensions of the Mondial Fast Cook FE-04 Electric Stove: 24.5cm depth, 22.5cm width, 7cm height, and 1.3kg weight.

## WARRANTY AND SUPPORT

Your Mondial Fast Cook FE-04 Electric Stove comes with **one-year warranty** against manufacturing defects. Please retain your proof of purchase for warranty claims.

For technical assistance, warranty service, or to inquire about replacement parts, please contact Mondial customer support. Refer to the contact information provided in the original product packaging or visit the official Mondial website.

**Note:** Unauthorized repairs or modifications will void the product warranty.