

## LECLSTAR B07JRBSJDR

# LECLSTAR Motion Sensor Closet Light User Manual

Model: B07JRBSJDR

## 1. INTRODUCTION

Thank you for choosing the LECLSTAR Motion Sensor Closet Light. This manual provides essential information for the safe and effective use of your new lighting product. Please read these instructions carefully before installation and operation, and retain them for future reference.

This wireless, battery-operated light features 51 LEDs, motion sensing capabilities, and is designed for various indoor applications such as closets, cabinets, kitchens, and stairs.

## 2. SAFETY INFORMATION

- Do not expose the device to water or excessive moisture.
- Do not attempt to disassemble, repair, or modify the light. This will void the warranty and may cause damage or injury.
- Use only the provided USB cable for charging.
- Avoid direct eye exposure to the LED light, as it can be very bright.
- Keep out of reach of children.

## 3. PACKAGE CONTENTS

Please check the package to ensure all items are present:

- 1 x LECLSTAR Motion Sensor Closet Light
- 1 x Magnetic Plastic Bracket
- 2 x 3M Adhesive Pads
- 4 x Mounting Screws
- 1 x USB Charging Cable
- 1 x User Manual

## 4. PRODUCT OVERVIEW

Familiarize yourself with the components of your LECLSTAR Motion Sensor Closet Light.



**Figure 1: Product Components.** This diagram illustrates the various parts of the light, including the USB charging port, magnetic strip for mounting, LED light board, durable aluminum alloy casing, ON/OFF switch, infrared motion sensor receiver, and protective ABS cover.

- **USB Port:** For charging the internal battery.
- **Magnetic Strip:** Allows for easy attachment to magnetic surfaces or the included bracket.
- **LED Light Board:** Contains 51 bright LEDs for illumination.
- **Aluminum Alloy Material:** Provides a durable and lightweight housing.
- **ON/OFF Button:** Controls the power and operating modes.
- **Infrared Receiver:** Detects signals from the remote control (if applicable).
- **ABS Cover:** Protects the LEDs and diffuses light.

## 5. SETUP AND INSTALLATION

The LECLSTAR Motion Sensor Closet Light offers flexible installation options.

## 5.1 Charging Before First Use

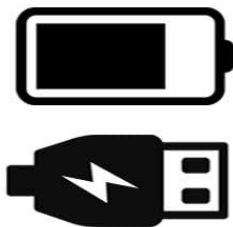
Before installation, fully charge the light. Refer to Section 6 for detailed charging instructions.

## 5.2 Mounting Options

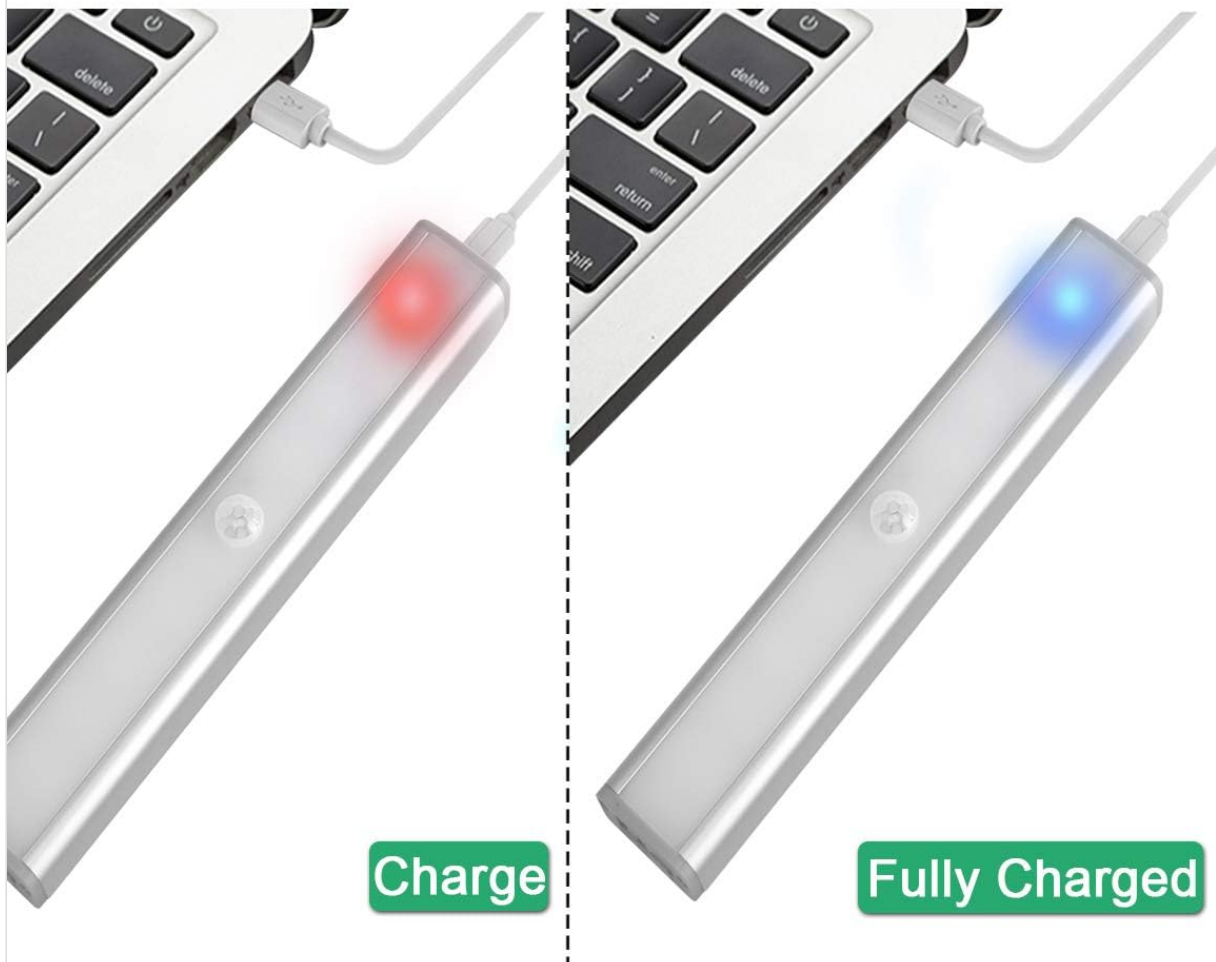
You can install the light using the magnetic plastic bracket with 3M adhesive or screws.

1. **Magnetic Adhesion:** Peel off the protective film from the 3M adhesive pads and attach them to the magnetic plastic bracket. Press the bracket firmly onto a clean, dry surface where you wish to install the light. The light can then be magnetically attached to the bracket.
2. **Screw Mounting:** Use the provided screws to secure the magnetic plastic bracket to a desired surface. Once the bracket is securely mounted, attach the light magnetically.

# Long Battery Life



- ✓ Built-in rechargeable lithium battery  
1000mAh large capacity
- ✓ Full charge within 2-3 hours
- ✓ After a full charge you can do the  
Use ampe for a month  
(in motion detection mode 10 times a day)
- ✓ After full charge, the lamp can be 1-3  
Hours are lit continuously  
(in continuous light mode)



**Figure 2:** Versatile Installation. This image illustrates the light's adaptability, showing it mounted under a bed, in a kitchen, on a bookshelf, along stairs, inside a wardrobe, and providing illumination for outdoor tasks, highlighting its ease of placement in diverse environments.

### 5.3 Placement Considerations

- For optimal motion detection, position the sensor ball to face the direction of expected movement.
- When using multiple motion sensor lights, avoid placing them too close together in motion-sensing mode, as they may interfere with each other's sensitivity.
- Ensure the installation surface is clean and dry for secure adhesion.

## 6. CHARGING INSTRUCTIONS

---

The LECLSTAR Motion Sensor Closet Light is equipped with a built-in 2400mAh lithium battery.

1. Connect the provided USB charging cable to the light's USB port.
2. Plug the other end of the USB cable into a standard USB power adapter (not included) or a computer's USB port.
3. During charging, the indicator light on the device will be **blue**.
4. Once fully charged, the indicator light will turn **red**.
5. A full charge typically takes approximately 4 hours.



# Mobile Work: Meet Your Multiple Needs



**Figure 3:** Charging Status. This image demonstrates the charging process, showing the light connected to a power source. The indicator light is red when charging and turns blue when the battery is fully charged, indicating its status clearly.

## 7. OPERATING INSTRUCTIONS

The light features multiple operating modes and can be controlled via its ON/OFF button or an optional remote control.

### 7.1 Mode Selection (ON/OFF Button)

Locate the ON/OFF button on the side of the light. Toggle the switch to select the desired mode:

- **OFF:** The light is completely off.
- **ON:** The light stays on continuously.
- **AUTO (Motion Sensor Mode):** The light will automatically turn on when motion is detected in a dark environment. It will turn off approximately 30 seconds after no motion is detected.



**Figure 4:** Motion Sensor Operation. This image demonstrates how the motion sensor works: the light remains off in bright environments, automatically turns on when movement is detected in the dark within a 3-meter, 120-degree range, and then automatically turns off after 30 seconds of inactivity.

## 7.2 Motion Sensor Details

- **Detecting Angle:** 120 degrees.



- **Detecting Distance:** Up to 3 meters (approximately 10 feet).
- The sensor is designed to activate only in low-light conditions to conserve battery life.

### 7.3 Remote Control Functions (Optional)

If your model includes a remote control, you can access additional features:



**Figure 5:** Remote Control Functions. This image displays the remote control, highlighting its various buttons: ON/OFF for power, 'S' for sensor mode, '1', '2', '3' for different light modes or brightness levels, '+' and '-' for adjusting brightness, and '15', '30', '60', '120' for setting a timer.

- **ON/OFF:** Turns the light on or off.
- **S (Sensor Mode):** Activates the motion sensor mode.
- **1, 2, 3 (Light Modes):** Selects different light modes or brightness levels.

- **50%, 100%, +, - (Adjustable Brightness):** Adjusts the light intensity.
- **15, 30, 60, 120 (Timer Function):** Sets the light to turn off automatically after a specified duration.

## 8. MAINTENANCE

---

- **Cleaning:** Wipe the light with a soft, dry cloth. Do not use abrasive cleaners or solvents.
- **Battery Care:** To prolong battery life, avoid fully discharging the battery frequently. Charge the light regularly, especially if it will not be used for an extended period.

## 9. TROUBLESHOOTING

---

- **Light not turning on:**
  - Ensure the battery is charged.
  - Check that the light is switched to the 'ON' or 'AUTO' mode.
- **Motion sensor not working:**
  - Ensure the light is in 'AUTO' mode.
  - Verify that the ambient light is dark enough for the sensor to activate.
  - Check that the sensor is not obstructed and is facing the area of expected movement.
  - If multiple motion sensor lights are nearby, they might interfere with each other. Try repositioning them.
- **Light flickers or dims unexpectedly:**
  - The battery level may be low. Recharge the light.

## 10. SPECIFICATIONS

---

Model	B07JRBSJDR
Light Color	Pure White (6000K)
LED Quantity	51 LEDs
Lumen Output	240lm
Motion Detecting Angle	120 degrees
Motion Detecting Distance	Up to 3 meters (10 feet)
LED Life Time	More than 80,000 hours
Battery Type	2400mAh Lithium Battery
USB Charging Time	Approximately 4 hours
Operating Voltage	4.2V
Wattage	3W
Dimensions	15.3 x 0.8 x 0.8 inches



<b>Material</b>	Metal, Plastic
<b>Power Source</b>	Battery Powered
<b>Special Features</b>	Instant On

## 11. WARRANTY AND SUPPORT

---

LECLSTAR provides a lifetime warranty for this product. If you encounter any issues or have questions regarding your Motion Sensor Closet Light, please contact the LECLSTAR service team for assistance. Our dedicated support team is ready to help you.

For warranty claims or technical support, please refer to the contact information provided on the product packaging or the official LECLSTAR website.