

## BESTISAN S9920

# BESTISAN S9920 Sound Bar User Manual

Model: S9920

## INTRODUCTION

The BESTISAN S9920 40-inch TV Sound Bar is designed to deliver a powerful and clear home theater audio experience. With 100 watts of power and 105dB room-filling sound, it significantly enhances your entertainment. This sound bar offers versatile sound effect modes, including movies, music, and dialogue, to optimize audio for different occasions. It supports both wired and wireless connections, providing flexibility for various setups. Its extended 40-inch design is optimized for both wall-mounted and TV-front placements, ensuring consistent cinematic sound quality.



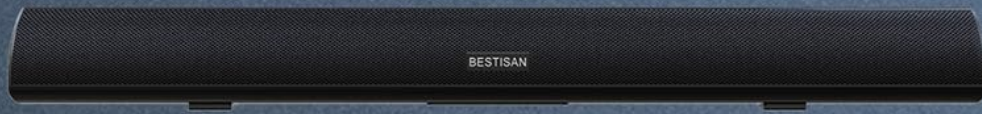
Image: The BESTISAN S9920 Sound Bar, a sleek black unit, is shown with its accompanying remote control, highlighting its compact and modern design.

## WHAT'S IN THE BOX

Upon unboxing your BESTISAN S9920 Sound Bar, you will find the following components:

- Sound Bar
- Power Adapter
- Remote Control
- Audio Cable
- Optical Cable
- User Manual
- Mount Accessories (Mount Screws and Wall Mount Brackets)
- Wall Mount Template

## What's in the Box



Soundbar



Power adapter



Digital Optical cable



3.5mm to 3.5mm  
audio cable



Remote control



User manual



Mount Screws and  
Wall Mount Brackets



Wall mount template

Image: A clear layout of all items included in the product packaging, such as the sound bar, remote, various cables, power adapter, user manual, and wall mounting hardware.

## SETUP

### Connectivity Options

The BESTISAN S9920 Sound Bar offers multiple connection methods to suit your audio source:

- **Bluetooth 5.0:** Pair wirelessly from up to 33 feet (10 meters) away for convenient audio streaming from compatible devices.
- **Wired Connections:** Utilize the in-unit 3.5mm AUX, RCA, Optical, or HDMI (ARC) inputs for a stable and high-quality audio connection to your TV, gaming console, or other media players.

## Wireless or Wired Connectivity

Pairs via Bluetooth V5.0 or Multiple Wired Interfaces and enjoy local music via USB driver connection.

HDMI(ARC)/Optical/AUX/USB Disk and AUX OUT Wired Connections



Image: A close-up view of the sound bar's rear panel, displaying the various input ports including HDMI (ARC), Optical, USB, AUX In, AUX Out, and DC power input.

### Placement and Mounting

The sound bar's design allows for flexible placement options:

- **Tabletop Placement:** Position the sound bar directly in front of your TV on a flat surface.
- **Wall Mounting:** The sound bar is wall-mountable. Use the included wall mount brackets, screws, and template for secure installation. Ensure the mounting location can support the sound bar's weight (approximately 9 pounds) and consider mounting into wall studs for optimal stability.



## Flexible Placement



Image: Demonstrates the sound bar's versatility, showing it placed on a TV stand, mounted below a wall-mounted TV, and mounted directly on a wall.

## OPERATING INSTRUCTIONS

### Controls

The BESTISAN S9920 Sound Bar can be controlled via the included remote control or the integrated buttons on the unit itself. The remote allows for comprehensive control over volume, input selection, and sound modes.



Image: A close-up of the remote control, highlighting buttons for volume, input selection, and dedicated bass and treble adjustments.

## Sound Effect Modes

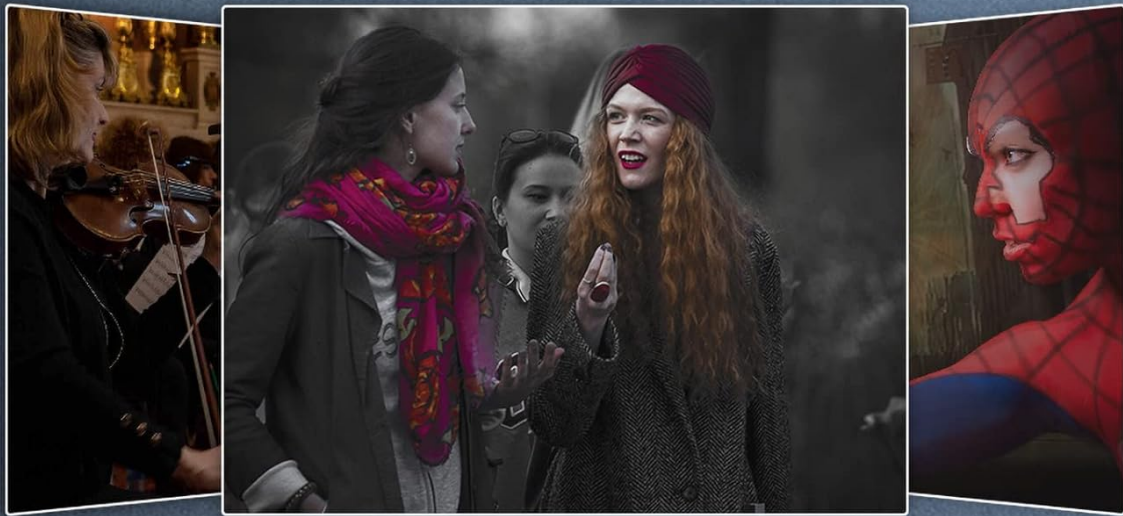
Optimize your audio experience with three bespoke equalizer modes:

- **Movie Mode:** Enhances cinematic sound effects, providing a more immersive experience for films and shows.
- **Music Mode:** Tailored for music playback, delivering rich and balanced audio.
- **Dialogue Mode:** Boosts vocal clarity, making conversations in TV programs and movies easier to understand.



## 3 Bespoke Equalizer Modes

DSP technology tailors & enhances audio to your media for max immersion.



MUSIC



DIALOGUE



MOVIE

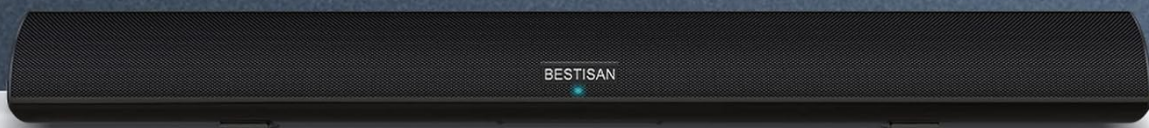


Image: The sound bar is depicted with three visual representations above it, illustrating the distinct audio profiles for Music, Dialogue, and Movie modes.

## MAINTENANCE

To ensure the longevity and optimal performance of your BESTISAN S9920 Sound Bar, follow these general maintenance guidelines:

- Keep the sound bar clean by wiping it with a soft, dry cloth. Avoid using abrasive cleaners or solvents.
- Ensure proper ventilation around the unit to prevent overheating.
- Protect the sound bar from excessive moisture, dust, and direct sunlight.
- Handle all cables and connections with care to prevent damage.

## TROUBLESHOOTING

If you encounter any issues with your BESTISAN S9920 Sound Bar, please refer to the following common troubleshooting tips:

- **No Sound:** Check all cable connections (power, audio input). Ensure the correct input source is selected on the sound bar and your TV. Verify the volume is not muted or set too low on both the sound bar and the connected device.
- **Distorted Sound:** Reduce the volume. Check if the audio source is clean. Ensure cables are securely connected and not damaged.
- **Bluetooth Pairing Issues:** Make sure the sound bar is in Bluetooth pairing mode. Disable and re-enable Bluetooth on your device. Ensure your device is within the 33-foot (10-meter) range.
- **Remote Control Not Working:** Check the battery. Ensure there are no obstructions between the remote and the sound bar's sensor.

For further assistance, please contact BESTISAN customer support.

SPECIFICATIONS

Feature	Detail
Brand	BESTISAN
Model Name	S9920
Speaker Type	Soundbar
Speaker Size	40 Inches
Speaker Maximum Output Power	100 Watts
Surround Sound Channel Configuration	5.0
Connectivity Technology	Bluetooth, Auxiliary, Optical, HDMI
Wireless Communication Technology	Bluetooth
Bluetooth Range	33 Feet (10 Meters)
Control Method	Remote
Material	Metal
Product Dimensions	40"D x 4"W x 4.1"H
Item Weight	9.05 Pounds
Mounting Type	Wall Mount
Manufacturer	MEGACRA Limited
UPC	680613284730

WARRANTY AND SUPPORT

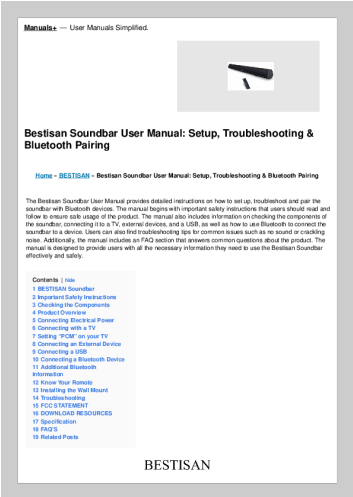
BESTISAN offers a worry-free 18-month after-sales support and friendly customer service for the S9920 Sound Bar. The product comes with a full warranty and lifetime technical support. Additionally, protection plans are available for purchase:

- 2-Year Protection Plan
- 3-Year Protection Plan

- Complete Protect (monthly plan covering eligible past and future purchases)

For warranty claims or technical assistance, please refer to the contact information provided in your product packaging or visit the official BESTISAN website.

Documents - BESTISAN – S9920



[\[pdf\]](#) User Manual Instructions Frequently Asked Questions Troubleshooting Guide Bestisan Soundbar User Manual Setup Troubleshooting Bluetooth Pairing Method 1 Connecting using an Optical cable Connect the DIGITAL AUDIO IN OPTICAL jack on to OUT of TV with a digital optical Press OPT button remote and LED indicator will be WHITE Set s audio output PCM BESTISAN Sound Bar Home Tech Supply hometechsupply 2023 12 ||| Manuals -- User Manuals Simplified. Bestisan Soundbar User Manual: Setup, Troubleshooting Bluetoo ... the Bluetooth device. see the device s manual for more information 3. Select S6520 or S8520 or **S9920** from the list, connect it. When your Bluetooth device is connected, the LED indicator blinks ... lang:en **score:36** filesize: 809.48 K page\_count: 14 document date: 2023-05-20



[\[pdf\]](#) User Manual Instructions RGB S6520H S8520H S9920 Owner's manuals Best Artisan Corp S6520H E3 80 81S8520H 81S9920UserManual bestisan web userfiles ||| Best Artisan Better Than Most Quick Start S6520H / S8520H / **S9920H** Please read all instructions before use for the best performance of this product. Save these instructions for future reference. Box Contents Sound Bar MUTE VOL VOL- TREB BASS RESET TREB- BASS- MOVIE MUSIC DIALOG B... lang:en **score:22** filesize: 1.11 M page\_count: 10 document date: 2021-12-22