

Manuals+

[Q & A](#) | [Deep Search](#) | [Upload](#)

manuals.plus /

› [VARTA](#) /

› [VARTA Blue Dynamic EFB N60 Car Battery User Manual](#)

VARTA N60

VARTA Blue Dynamic EFB N60 Car Battery User Manual

Model: N60

1. PRODUCT OVERVIEW

The VARTA Blue Dynamic EFB (Enhanced Flooded Battery) N60 is designed for vehicles equipped with entry-level start-stop systems and those with higher than normal energy demands. This battery offers extended cycle life compared to conventional automotive batteries, making it a robust and durable choice for modern vehicle requirements.



Figure 1.1: Front view of the VARTA Blue Dynamic EFB N60 battery, showing the VARTA logo, N60 60Ah 12V 640A (EN) ratings, and 'DYNAMIC EFB' branding with '2x MORE CYCLE LIFE' indicator.



Figure 1.2: Detailed front view of the VARTA Blue Dynamic EFB N60 battery, highlighting the terminal posts and overall design.



Figure 1.3: Side view of the VARTA Blue Dynamic EFB N60 battery, illustrating its dimensions: 242mm length, 175mm width, and 190mm height.



Figure 1.4: Top view of the VARTA Blue Dynamic EFB N60 battery, showing the integrated handle, vent caps, and a label with the barcode and 'Replace EFB only with EFB or AGM Technology' warning.

2. SAFETY INFORMATION

WARNING: Car batteries contain corrosive materials and can produce explosive gases. Always handle with extreme care. Failure to follow these safety instructions can result in serious injury or death.

- **Corrosive:** Battery acid is corrosive. Avoid contact with skin, eyes, and clothing. In case of contact, flush immediately with water and seek medical attention.
- **Explosive Gases:** Batteries generate hydrogen gas, which is highly flammable and explosive. Keep sparks, flames, and smoking materials away from the battery. Ensure adequate ventilation when working with batteries.
- **Short Circuit:** Do not short-circuit the battery terminals. This can cause severe burns, fire, or explosion.

- **Eye Protection:** Always wear appropriate eye protection (safety goggles) when working with batteries.
- **Gloves:** Wear protective gloves to prevent contact with battery acid.
- **Keep Out of Reach of Children:** Batteries are not toys and contain dangerous chemicals. Store them securely away from children.
- **Follow Instructions:** Always adhere to the instructions provided in this manual and any vehicle-specific guidelines.



Figure 2.1: International safety warning symbols relevant to battery handling. These include warnings for corrosive materials, no smoking/open flames, wear eye protection, follow instructions, chemical hazard, explosive gas, and recycling information.

3. WHAT'S IN THE BOX

Your VARTA Blue Dynamic EFB N60 package includes:

- 1 x VARTA Blue Dynamic EFB N60 Battery

4. INSTALLATION AND SETUP

Battery installation should ideally be performed by a qualified professional due to the safety risks involved. If you choose to install it yourself, proceed with extreme caution and follow these general guidelines:

1. **Preparation:** Ensure the vehicle's ignition is off and all electrical accessories are disconnected. Wear safety goggles and gloves.
2. **Locate Battery:** Identify the existing battery in your vehicle.
3. **Disconnect Old Battery:** Always disconnect the negative (black, -) terminal first, followed by the positive (red, +) terminal. Use an appropriate wrench.
4. **Remove Old Battery:** Carefully remove the old battery from its tray. Be mindful of its weight (approx. 17 kg).
5. **Clean Tray and Terminals:** Clean the battery tray and terminal clamps to remove any corrosion or debris.
6. **Place New Battery:** Carefully place the VARTA Blue Dynamic EFB N60 battery into the battery tray, ensuring it is securely seated.
7. **Connect New Battery:** Connect the positive (red, +) terminal first, followed by the negative (black, -) terminal. Ensure connections are tight and secure. Do not overtighten.
8. **Secure Battery:** Fasten any battery hold-down clamps or straps to prevent movement.
9. **Disposal:** Dispose of the old battery responsibly at an authorized recycling center. Do not discard with household waste.

For specific vehicle instructions, consult your vehicle's owner's manual.

5. OPERATING THE BATTERY

The VARTA Blue Dynamic EFB N60 is an Enhanced Flooded Battery designed to support modern vehicle features, particularly start-stop systems. It provides reliable power for engine starting and supports the electrical demands of the vehicle's systems.

- **Start-Stop System Compatibility:** This battery is optimized for vehicles with entry-level start-stop functionality, where the engine frequently shuts off and restarts to save fuel. The EFB technology ensures rapid and reliable restarts.
- **High Energy Demands:** It is suitable for vehicles with higher electrical loads, providing consistent power for various electronic components.

- **Cycle Life:** The EFB design offers an extended cycle life compared to conventional batteries, meaning it can withstand more charge and discharge cycles, which is crucial for start-stop applications.

6. MAINTENANCE

Proper maintenance can extend the life of your VARTA Blue Dynamic EFB N60 battery:

- **Keep Terminals Clean:** Regularly inspect battery terminals for corrosion. Clean them with a wire brush and a mixture of baking soda and water if corrosion is present. Rinse with clean water and dry thoroughly.
- **Check Connections:** Ensure battery cable connections are tight and secure. Loose connections can lead to poor performance and damage.
- **Keep Battery Top Clean and Dry:** A dirty or wet battery top can lead to self-discharge. Wipe it clean with a damp cloth.
- **Check Battery Hold-Down:** Ensure the battery is securely fastened in its tray to prevent vibration damage.
- **Avoid Deep Discharge:** While EFB batteries are designed for cycling, repeated deep discharges can shorten their lifespan. If the vehicle is stored for extended periods, consider using a trickle charger to maintain charge.
- **Regular Vehicle Use:** Regular driving helps keep the battery charged by the vehicle's alternator.

7. TROUBLESHOOTING

If you experience issues with your VARTA Blue Dynamic EFB N60 battery, consider the following common problems and solutions:

- **Engine Cranks Slowly or Not at All:**
 - **Cause:** Low battery charge, corroded terminals, loose connections, or a failing alternator.
 - **Solution:** Check battery voltage with a multimeter. If low, charge the battery. Inspect and clean terminals, ensure connections are tight. Have the alternator checked by a mechanic.
- **Lights Dim or Electrical Components Malfunction:**
 - **Cause:** Insufficient battery power or a charging system issue.
 - **Solution:** Check battery charge. Ensure the vehicle's charging system is functioning correctly.
- **Battery Leaking:**
 - **Cause:** Overcharging, physical damage, or manufacturing defect.
 - **Solution:** Immediately disconnect the battery (negative first). Clean up any spilled acid with baking soda and water. Do not attempt to use a leaking battery. Seek professional assistance for inspection and replacement.
- **Battery Not Holding Charge:**
 - **Cause:** Old battery, parasitic drain, or faulty charging system.
 - **Solution:** Have the battery tested by a professional. Check for any electrical components drawing power when the vehicle is off. Inspect the alternator and voltage regulator.

If problems persist, consult a qualified automotive technician.

8. SPECIFICATIONS

Key technical specifications for the VARTA Blue Dynamic EFB N60 battery:

Specification	Value
Brand	VARTA
Model Number	N60
Capacity	60 Ah
Cold Cranking Amps (CCA)	640 A (EN)
Voltage	12V
Product Dimensions (L x W x H)	24.2 x 17.5 x 19 cm
Item Weight	17 kg
Manufacturer	Johnson Controls
OEM Part Number	560500064
Terminal Type	AT Terminal
Number of Cells	10
Internal Resistance	18.75 Milliohms

9. WARRANTY AND SUPPORT

For information regarding warranty coverage and customer support for your VARTA Blue Dynamic EFB N60 battery, please refer to the warranty documentation provided with your purchase or visit the official VARTA website. You can also contact VARTA customer service directly for assistance with product inquiries, technical support, or warranty claims.

VARTA Official Website: www.varta-automotive.com/en-gb

© 2024 VARTA. All rights reserved.

Related Documents - N60



[VARTA Automobilski Akumulatori: Vodič i Katalog](#)

Otkrijte naprednu tehnologiju, superiorne performanse i širok asortiman VARTA automobilskih akumulatora. Ovaj katalog pruža detaljne informacije o proizvodima, tehnologiji i primeni, pomažući vam da pronađete savršeni akumulator za vaše vozilo.



[VARTA Powersports Batteries Guide 2013/2014 | Advanced Technology & Power](#)

Explore the VARTA Powersports Batteries 2013/2014 guide, detailing advanced technology, exceptional power, and comprehensive specifications for motorcycles, ATVs, jet-skis, and more. Find the perfect battery for your powersports vehicle.



[VARTA Work Flex® BL30R Rechargeable LED Work Light User Manual](#)

Comprehensive guide to the VARTA Work Flex® BL30R rechargeable LED work light, covering charging, operation, features, and safety information. Includes model 18684 details.



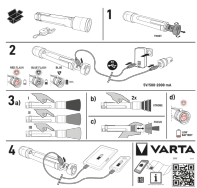
[VARTA Plug Charger User Manual and Safety Information](#)

This document provides instructions and safety precautions for the VARTA Plug Charger, a device designed for charging AA and AAA Ni-MH rechargeable batteries. It includes details on usage, charging times, error indicators, and environmental protection guidelines.



[VARTA LCD Ultra Fast Charger+ User Manual](#)

User manual for the VARTA LCD Ultra Fast Charger+ (Model 57685), providing instructions on charging modes (Charge, Refresh, Quick Charge), safety precautions, usage, and environmental guidelines for Ni-MH rechargeable batteries.



[VARTA Night Cutter F30R Flashlight User Guide](#)

Instructions for using the VARTA Night Cutter F30R flashlight, including charging, mode selection, focus adjustment, and power bank functionality.