

Artist hand B07JJC5VRX

Artist hand Hydraulic Recline Barber Chair Instruction Manual

Model: B07JJC5VRX



1. INTRODUCTION

This manual provides detailed instructions for the assembly, operation, and maintenance of your Artist hand Hydraulic Recline Barber Chair. Please read this manual thoroughly before use to ensure proper function and longevity of the product. This chair is designed for professional salon and spa environments, offering comfort and durability.



Image 1.1: The Artist hand Hydraulic Recline Barber Chair in black faux leather, featuring a sturdy chrome base and adjustable components. This image provides a general overview of the product's design and appearance.

2. IMPORTANT SAFETY INFORMATION

Always ensure the chair is fully assembled and stable before use. Be cautious when adjusting the height to prevent sudden movements. Follow the assembly instructions carefully to avoid injury.

- Do not exceed the maximum weight capacity of 450 pounds.
- Keep hands and feet clear of moving parts during adjustment.
- Ensure all bolts and fasteners are securely tightened after assembly and periodically check for looseness.

- Use on a level, stable surface to prevent tipping.
- Children should not operate or play on the chair.

3. PACKAGE CONTENTS

Please verify that all components are present before beginning assembly. If any parts are missing or damaged, contact customer support.



Image 3.1: Exploded view of the Artist hand Barber Chair components. This diagram illustrates the various parts included in the package, such as the base (A), hydraulic pump (B), footrest support (C), seat assembly (E), backrest (G), and headrest (J), along with associated hardware.

Based on the assembly diagram, your package should include:

- A: Chrome Base
- B: Hydraulic Pump Assembly
- C: Footrest Support Bars

- D: Pump Cover
- E: Seat Cushion Assembly (with armrests)
- F: Recline Mechanism Rod
- G: Backrest
- H: Footrest Plate
- I: Footrest Frame
- J: Adjustable Headrest
- Necessary Hardware (bolts, washers, etc.)

4. ASSEMBLY INSTRUCTIONS

The Artist hand Barber Chair requires assembly. It can typically be assembled in approximately 15 minutes. It is recommended to have two people for certain steps due to the weight of components.

1. **Attach Hydraulic Pump to Base:** Place the chrome base (A) on a flat surface. Insert the hydraulic pump assembly (B) into the center hole of the base. Ensure it is seated firmly.
2. **Install Pump Cover:** Slide the pump cover (D) over the hydraulic pump.
3. **Attach Footrest Support Bars:** Secure the footrest support bars (C) to the designated points on the seat cushion assembly (E) using the provided hardware.
4. **Connect Footrest Frame and Plate:** Attach the footrest frame (I) to the footrest support bars (C). Then, secure the footrest plate (H) to the footrest frame (I).
5. **Mount Seat Assembly:** Carefully lift the seat cushion assembly (E) and place it onto the top of the hydraulic pump (B). Ensure it is properly aligned and secured.
6. **Attach Backrest:** Connect the backrest (G) to the rear of the seat cushion assembly (E) using the appropriate bolts.
7. **Insert Recline Mechanism Rod:** Insert the recline mechanism rod (F) into its designated slot on the side of the chair, connecting it to the backrest recline mechanism.
8. **Install Adjustable Headrest:** Slide the adjustable headrest (J) into the top slot of the backrest (G).
9. **Final Check:** Verify all connections are tight and the chair is stable before first use.

5. OPERATING INSTRUCTIONS

The Artist hand Barber Chair offers several adjustable features for client comfort and stylist convenience.

5.1. Height Adjustment

The chair features a heavy-duty hydraulic pump for easy height adjustment. To raise the chair, repeatedly press the foot pedal located at the base. To lower the chair, press and hold the foot pedal. The chair can be adjusted up to 6 inches in height.

5.2. Recline Function

The backrest reclines up to 135 degrees. To recline, pull the lever located on the side of the chair (F) and gently push the backrest backward. Release the lever to lock the backrest in the desired position. The backrest can be

adjusted to multiple locking positions.



Image 5.1: Close-up view of the recline lever on the side of the barber chair. The arrows indicate the direction of movement for engaging the recline mechanism.



Image 5.2: The Artist hand Barber Chair fully reclined, demonstrating its versatility for various services. The footrest is also extended, providing full support.

5.3. Swivel Function

The chair is designed to swivel 360 degrees, allowing for easy positioning of the client without moving the entire base.



Image 5.3: An illustration showing the 360-degree swivel capability of the barber chair, highlighting its flexibility for client positioning.

5.4. Adjustable Headrest

The headrest can be adjusted vertically to accommodate different client heights. Simply pull the headrest up or push it down to the desired position. It can also be locked in place.

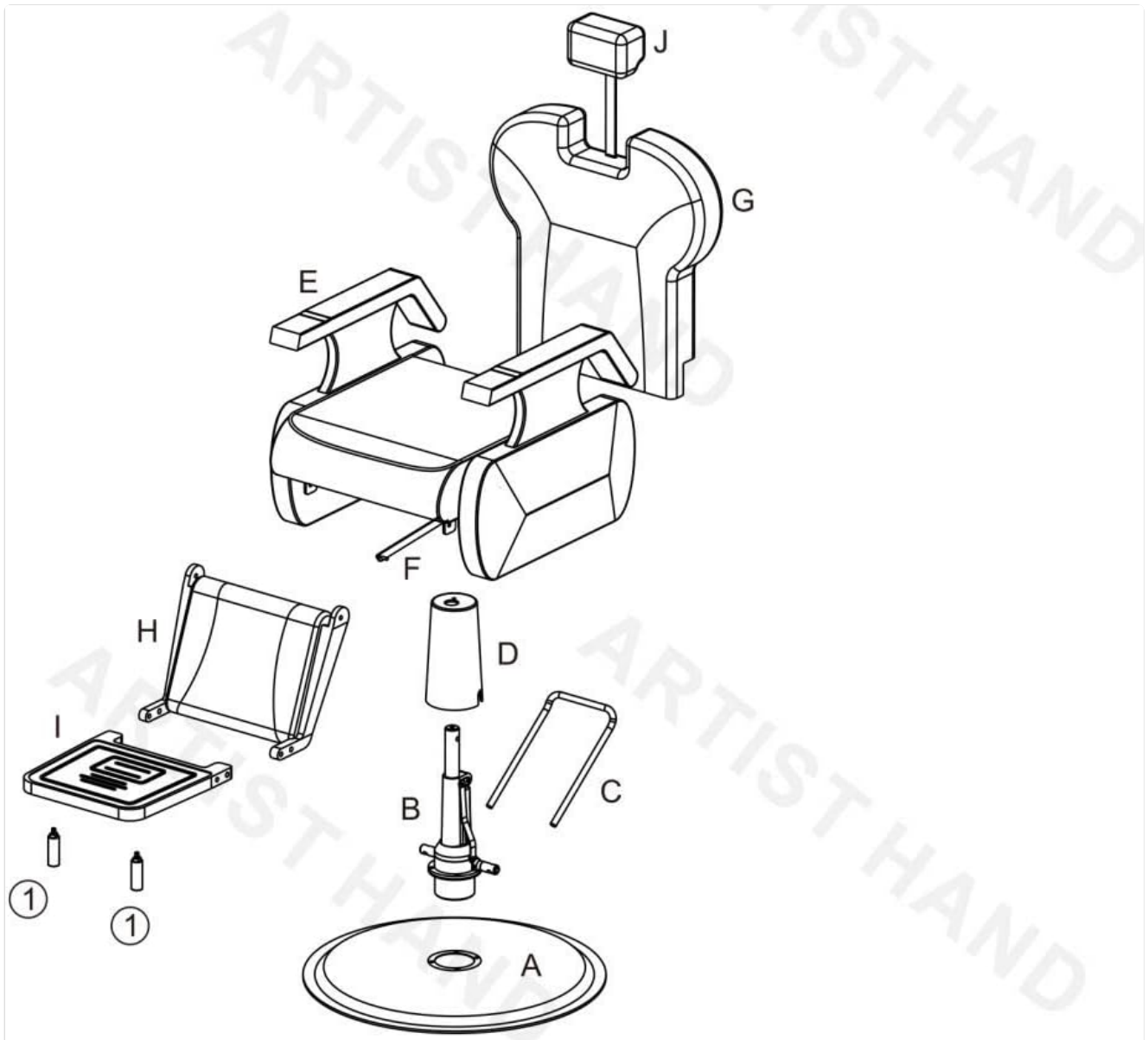


Image 5.4: This image demonstrates the adjustable headrest and the hydraulic height adjustment of the chair, showing the range of motion for both features.

6. MAINTENANCE

Proper maintenance ensures the longevity and appearance of your barber chair.

- **Cleaning:** Wipe clean with a damp cloth. For faux leather surfaces, use a mild, non-abrasive cleaner. Avoid harsh chemicals that may damage the material.
- **Inspection:** Periodically inspect all moving parts, bolts, and connections for wear or looseness. Tighten any loose fasteners immediately.
- **Hydraulic System:** If the hydraulic system becomes stiff or noisy, consult a professional for lubrication or repair. Do not attempt to disassemble the hydraulic pump yourself.

7. TROUBLESHOOTING

This section addresses common issues you might encounter with your barber chair.

- **Chair does not raise/lower:**

Possible Cause: Hydraulic pump malfunction or low fluid.

Solution: Ensure the foot pedal is being fully depressed. If the issue persists, contact customer support for assistance.

- **Chair wobbles:**

Possible Cause: Loose connections or uneven floor.

Solution: Check and tighten all assembly bolts, especially those connecting the seat to the base. Ensure the chair is on a level surface.

- **Backrest does not recline/lock:**

Possible Cause: Recline mechanism obstruction or damage.

Solution: Check for any obstructions around the recline lever and mechanism. Ensure the lever is fully engaged or disengaged. If damaged, contact customer support.

8. SPECIFICATIONS



Image 8.1: Detailed dimensions of the Artist hand Barber Chair, including height, width, and depth measurements for various components.

Feature	Detail
Brand	Artist hand
Model	B07JJC5VRX
Color	Black
Product Dimensions	32"D x 26"W x 41.3"H
Material	Faux Leather (Upholstery), Sponge (Fill Material)
Back Style	Solid Back
Special Feature	Durable, Easy to Clean, Reclining, Swivel, Adjustable Height

Recommended Uses	Salon, Barber Shop, Tattoo Studio
Maximum Load Weight	450 pounds
Base Type	27-inch Chrome Base
Reclining Position Count	Approx. 3-5 positions (up to 135°)
Item Weight	129.7 pounds
UPC	711347731389



Image 8.2: This image highlights the 27-inch chrome base and the maximum load weight capacity of 450 pounds, emphasizing the chair's stability and heavy-duty construction.

9. PRODUCT VIDEO

Watch this video for a visual overview of the Artist hand heavy-duty barber chair, demonstrating its features and

functionality.

Your browser does not support the video tag.

Video 9.1: An official product video titled 'Artist hand heavy duty barber chair' by Superworthboutique. This video showcases the chair's design, recline function, and overall appearance in a salon setting.

10. WARRANTY AND SUPPORT

For warranty information, specific return policies, or technical support, please refer to the documentation provided with your purchase or contact the seller directly. Artist hand is committed to customer satisfaction. If you encounter any problems, please feel free to contact us and we will respond immediately.

