

## Manuals+

[Q & A](#) | [Deep Search](#) | [Upload](#)

[manuals.plus](#) /

› [Suncast](#) /

› [Suncast 2 Pack 175 ft. Wicker Style Resin Hose Hideaway with Hose Guide, Java, Mocha Brown Instruction Manual](#)

### Suncast CPLPTW175

# Suncast 175 ft. Wicker Style Resin Hose Hideaway with Hose Guide Instruction Manual

Model: CPLPTW175

Brand: Suncast

## 1. INTRODUCTION

This manual provides instructions for the proper setup, operation, and maintenance of your Suncast 175 ft. Wicker Style Resin Hose Hideaway with Hose Guide, Model CPLPTW175. This outdoor garden hose reel is designed to store up to 175 feet of 5/8-inch standard vinyl hose, offering a functional solution for hose management.

The unit features a durable resin construction with a wicker-style exterior, designed to withstand outdoor elements. The integrated Slide Trak Hose Guide assists in smooth winding and unwinding of the hose, helping to prevent kinks.



*Image 1.1: Two Suncast Wicker Style Resin Hose Hideaways, showcasing the product's design and hose connection.*

## 2. SAFETY INFORMATION

- Always ensure the hose hideaway is placed on a stable, level surface to prevent tipping.
- Do not exceed the recommended hose capacity of 175 feet of 5/8-inch hose. Overloading can damage the unit.
- Before connecting or disconnecting the hose, ensure the water supply is turned off.
- Keep hands and fingers clear of moving parts, especially the crank handle and hose guide, during operation.
- This product is intended for outdoor use with water hoses only. Do not use for other purposes.

## 3. PACKAGE CONTENTS

Verify that all components are present before beginning assembly or setup. This product is sold as a 2-pack, so you will receive two complete units.

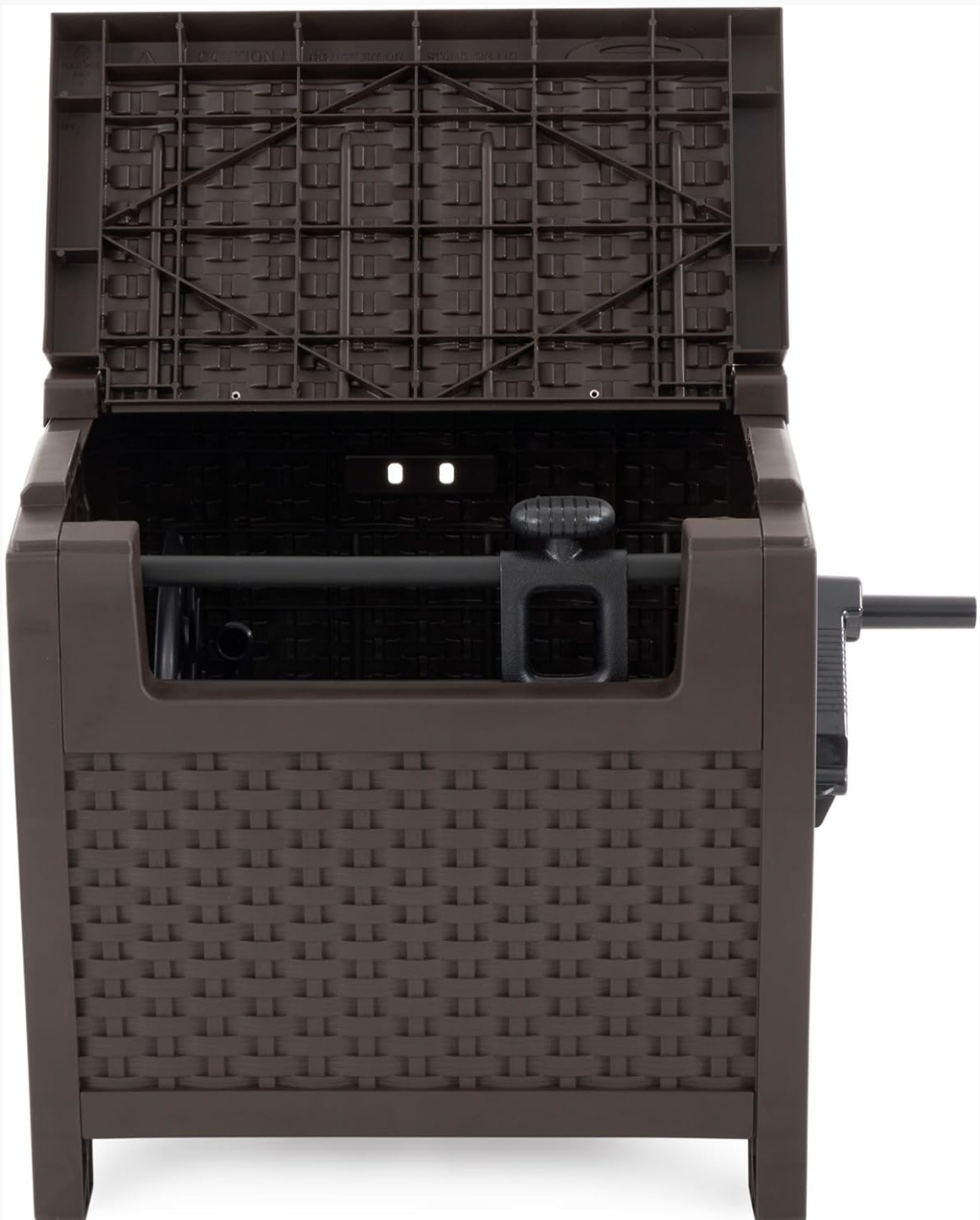
- Suncast Wicker Style Resin Hose Hideaway Unit (x2)
- Crank Handle (x2)
- Leader Hose (for connecting to water spigot) (x2)
- Instruction Manual (this document)



Image 3.1: Overview of the Suncast hose hideaway, emphasizing key features and materials.

## 4. SETUP INSTRUCTIONS

1. **Unpack the Unit:** Carefully remove the hose hideaway from its packaging. Ensure all packing materials are discarded responsibly.
2. **Position the Unit:** Place the hose hideaway on a flat, stable surface near your water spigot.
3. **Connect the Leader Hose:**
  - Open the lid of the hose hideaway.
  - Locate the internal connection point for the leader hose.
  - Attach one end of the provided leader hose to the internal connection point on the reel. Ensure a tight seal to prevent leaks.
  - Route the other end of the leader hose out of the unit through the designated opening.





*Image 4.1: Internal view of the hose hideaway with the lid open, illustrating the hose reel and connection area.*

4. **Connect to Water Spigot:** Attach the free end of the leader hose to your outdoor water spigot. Hand-tighten to ensure a secure, leak-free connection.
5. **Attach Your Garden Hose:**
  - Connect your garden hose (up to 175 ft of 5/8-inch hose) to the external connection point on the hose hideaway.
  - Ensure this connection is also hand-tightened for a secure seal.



*Image 4.2: The hose hideaway with a garden hose attached and ready for initial winding.*

6. **Wind the Hose:** Slowly turn on the water supply to check for leaks. Once confirmed, begin winding your garden hose onto the reel using the crank handle. The Slide Trak Hose Guide will help distribute the hose evenly.

## 5. OPERATING INSTRUCTIONS

### 5.1. Unwinding the Hose

1. Ensure the water supply is turned on.

2. Grasp the end of your garden hose and pull it gently from the hose hideaway. The hose will unreel smoothly.
3. Extend the hose to the desired length for watering.



*Image 5.1: The hose hideaway in use, with the garden hose extended for watering.*

## **5.2. Winding the Hose**

1. After use, turn off the water supply at the spigot.
2. If desired, drain any remaining water from the hose.
3. Turn the crank handle clockwise to begin winding the hose back onto the reel.
4. The Slide Trak Hose Guide will move back and forth, helping to layer the hose evenly on the reel.
5. Continue winding until the entire hose is neatly stored within the hideaway.



*Image 5.2: The crank handle and hose guide, essential for winding the hose.*

## 6. MAINTENANCE

- **Cleaning:** Wipe down the exterior of the hose hideaway with a damp cloth and mild soap as needed. Avoid abrasive cleaners that could damage the resin finish.
- **Winter Storage:** In freezing temperatures, disconnect the hose hideaway from the water supply and drain all water from the hose and unit to prevent damage from freezing. Store the unit in a sheltered area during winter months.
- **Hose Connections:** Periodically check all hose connections for tightness and wear. Replace washers if necessary to prevent leaks.

## 7. TROUBLESHOOTING

Problem	Possible Cause	Solution
Water leaks from connections.	Loose connections, worn washers.	Tighten all connections. Replace rubber washers if they appear worn or damaged.



Problem	Possible Cause	Solution
Hose does not wind smoothly.	Hose is kinked, reel mechanism obstructed, hose capacity exceeded.	Ensure the hose is not kinked. Check for debris obstructing the reel. Verify hose length does not exceed 175 ft of 5/8-inch hose.
Crank handle is stiff or difficult to turn.	Internal mechanism requires lubrication, hose is jammed.	Inspect for any hose jams. Apply a silicone-based lubricant to the crank mechanism if accessible and safe to do so.

## 8. SPECIFICATIONS

- **Brand:** Suncast
- **Model Number:** CPLPTW175
- **Material:** Resin
- **Color:** Mocha Brown (Wicker Style)
- **Hose Capacity:** Up to 175 feet of 5/8-inch standard vinyl hose
- **Operation Mode:** Manual

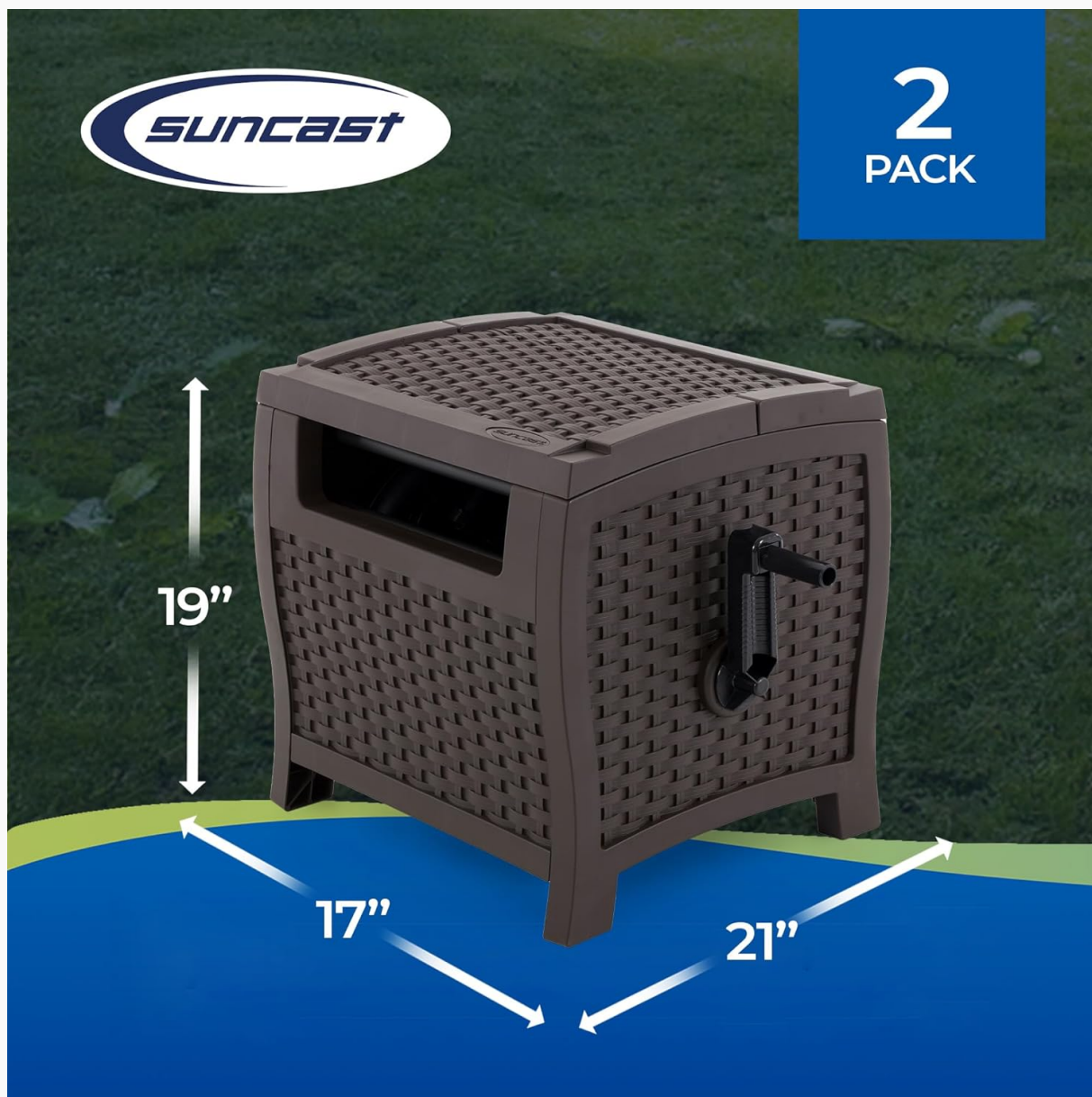


Image 8.1: Product dimensions for the Suncast hose hideaway.

Note: The product dimensions from the image are approximately 21" (Width) x 17" (Depth) x 19" (Height). Some product descriptions may list slightly different dimensions.

- **Approximate Dimensions (W x D x H):** 21" x 17" x 19"

## 9. WARRANTY AND SUPPORT

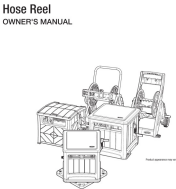

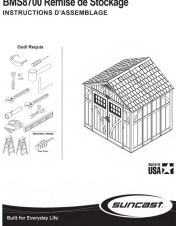

For warranty information or technical support, please refer to the official Suncast website or contact their customer service department. Keep your purchase receipt as proof of purchase.

### Suncast Contact Information:

- Website: [www.suncast.com](http://www.suncast.com)
- Refer to the website for current contact numbers and support resources.

© 2025 Suncast Corporation. All rights reserved.

## Related Documents - CPLPTW175

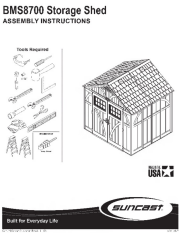
	<p><a href="#">Suncast Hose Reel Owner's Manual</a></p> <p>Owner's manual for Suncast Hose Reels, providing instructions on setup, care, installation, and maintenance for various models like WST150, WPT150, SMT212, and SMW212.</p>
	<p><a href="#">Suncast JNF175 Hose Reel User Manual and Warranty Information</a></p> <p>Instructions for using, servicing, and maintaining the Suncast JNF175 hose reel, along with a three-year limited warranty.</p>
	<p><a href="#">Suncast BMS8700 Storage Shed Assembly Instructions</a></p> <p>Comprehensive assembly instructions for the Suncast BMS8700 storage shed. This guide covers required tools, site preparation, parts identification, and detailed step-by-step assembly procedures for building your Suncast shed.</p>
	<p><a href="#">Suncast BMPS6400 Series Patio Storage and Prep Station Assembly Instructions</a></p> <p>Detailed assembly instructions for the Suncast BMPS6400 Series Patio Storage and Prep Station, including a parts list, required tools, safety precautions, and step-by-step guidance for building the unit.</p>





[Suncast Free Standing Pergola Assembly Instructions](#)

Comprehensive assembly instructions for Suncast Free Standing Pergolas, covering site preparation, parts identification, step-by-step building process, and warranty information. Includes guidance for various sizes.



[Suncast BMS8700 Storage Shed Assembly Instructions](#)

Comprehensive assembly instructions for the Suncast BMS8700 Storage Shed, covering site preparation, parts identification, and step-by-step building guidance. Includes essential tips for care, maintenance, and safety.