

## Fluidmaster 703AP4

# Fluidmaster 703AP4 Specialty Toilet Fill Valve User Manual

Model: 703AP4 | Brand: Fluidmaster

## INTRODUCTION

---

The Fluidmaster 703AP4 Specialty Toilet Fill Valve is designed as a direct replacement for old or inefficient fill valves in Glacier Bay and Niagara Flapperless Toilets. This valve optimizes your toilet's refill performance, ensuring fast and efficient operation. It is built with corrosive-resistant materials for durability and offers a cost-effective solution for common toilet fill problems.



Image: Packaging for the Fluidmaster 703AP4 Specialty Toilet Fill Valve, showing two units.

## Safety Information

- Always turn off the water supply to the toilet before beginning any installation or maintenance.
- Wear appropriate personal protective equipment, such as gloves and eye protection, when handling plumbing components.
- Ensure all connections are secure to prevent leaks.
- Keep small parts away from children.

- If you are unsure about any step, consult a qualified plumber.

## PRODUCT OVERVIEW AND COMPONENTS

---

The Fluidmaster 703AP4 fill valve consists of several key components designed for efficient water flow and level control within your toilet tank.

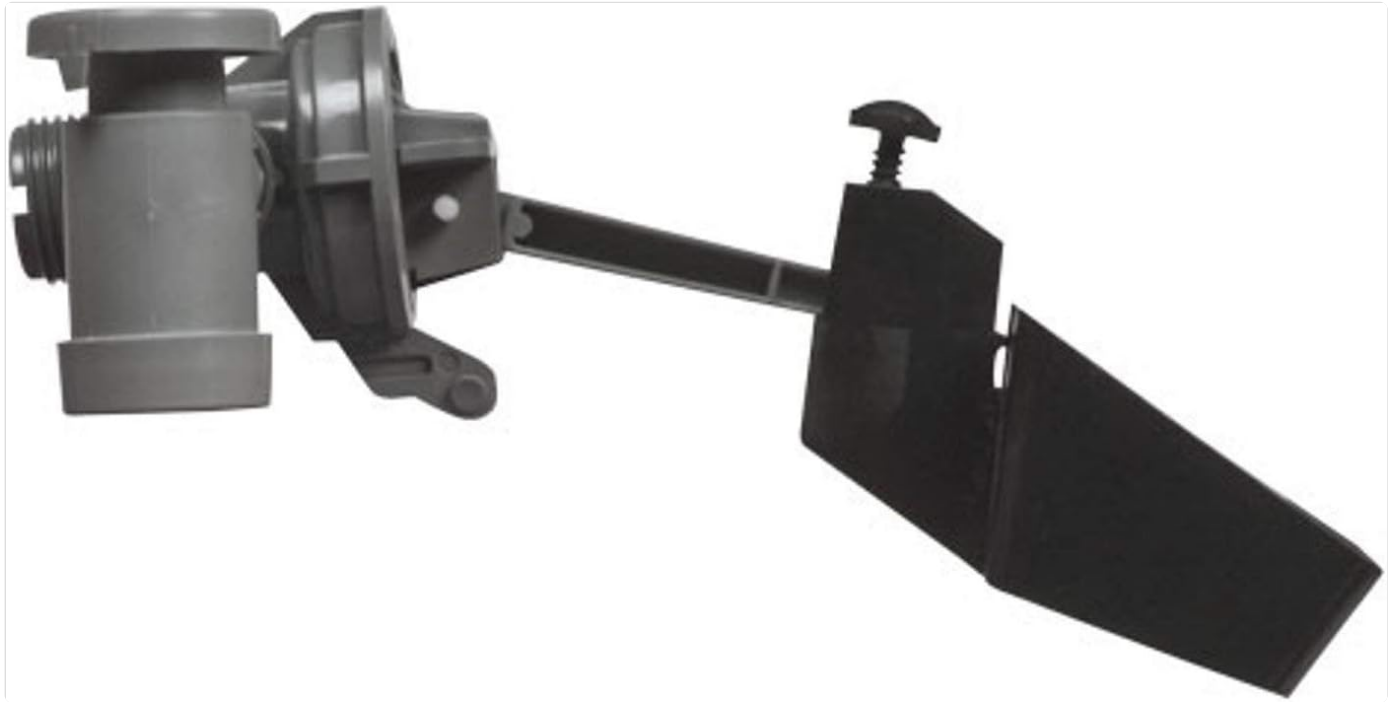


Image: A detailed view of the Fluidmaster 703AP4 fill valve, showing the main body and the float arm mechanism.

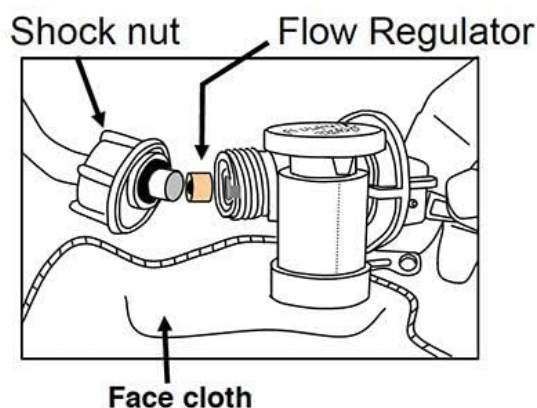
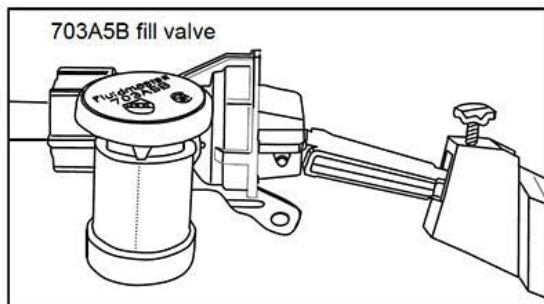


Image: Another perspective of the Fluidmaster 703AP4 fill valve, highlighting its compact design.



## Replacing 703A5B Fill Valve

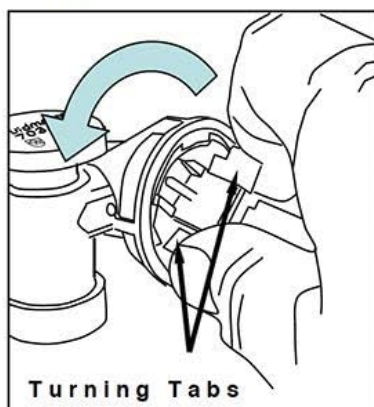
- 1) When removing the Shock nut from the Fluidmaster fill valve place a face cloth in your hand and cup it under the shock nut to catch the tiny Flow Regulator located inside valve body.
- 2) You must replace the Flow Regulator back inside new Fluidmaster fill valve, then hand tighten the Shock nut back on fill valve body. **Be sure to keep the fill valve level while tightening Shock nut.**
- 3) To flush out debris or change out the Disk Shut Off Seal please follow Steps 1,2 and 3,below.



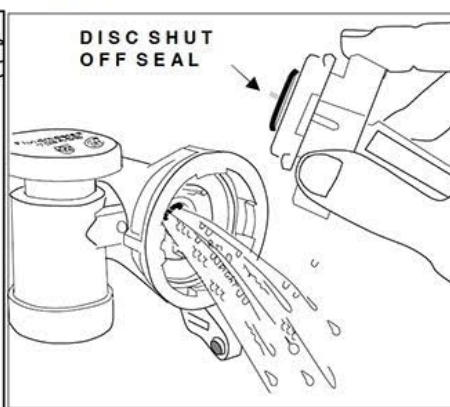
### Replacing Seal and rinsing out debris

1. Turn off water to toilet. Place thumb and index finger on turning tabs, (fig.1). Rotate counter clockwise 1/8 turn to unlock.
2. Remove float arm away from valve body. Note: Disc shut-off seal located at float arm base, (fig.2)
3. Place cupped hand over valve to prevent splashing and turn on water supply for several seconds to rinse out debris.
4. Replace Disc shut-Off Seal. Inspect metal pin, (Fig.2). Make sure pin is not bent. Replace float arm into well of body and turn clockwise to lock into place, (fig.3).. Make sure the side bubbler is setting horizontal.

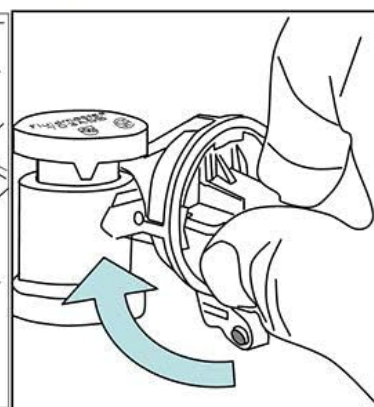
**Fig. 1    Unlock**



**Fig. 2**



**Fig. 3    Lock**



30800 Rancho Viejo Road, San Juan Capistrano, CA 92675 - USA - 800-631-2011

Image: An illustrative diagram showing the Fluidmaster fill valve correctly installed inside a toilet tank, with water level indicated.

## INSTALLATION INSTRUCTIONS

Follow these steps for a quick and easy installation of your new Fluidmaster 703AP4 fill valve.

1. **Turn off Water Supply:** Locate the water supply valve behind or near the toilet and turn it clockwise until the water

flow stops. Flush the toilet to empty the tank.

2. **Remove Old Fill Valve:** Disconnect the water supply line from the bottom of the old fill valve. Unscrew the mounting nut holding the old fill valve in place and carefully remove it from the tank.
3. **Clean Tank Base:** Clean any debris or mineral buildup from the hole at the bottom of the toilet tank where the fill valve sits.
4. **Install New Fill Valve:** Insert the new Fluidmaster 703AP4 fill valve into the hole at the bottom of the tank. Ensure the shank washer is properly seated on the outside of the tank.
5. **Secure Fill Valve:** Hand-tighten the mounting nut onto the threaded shank of the new fill valve from underneath the tank. Do not overtighten.
6. **Connect Water Supply:** Reconnect the water supply line to the bottom of the new fill valve. Hand-tighten, then use a wrench to tighten an additional quarter turn. Do not overtighten.
7. **Turn on Water Supply:** Slowly turn the water supply valve counter-clockwise to restore water flow to the toilet tank. Check for leaks.
8. **Adjust Water Level (if necessary):** The valve is designed to optimize refill. If adjustment is needed, refer to the diagram below for components like the shock nut and flow regulator.



Image: A visual three-step guide illustrating the installation process: 1. Flush out dump tank, 2. Remove old fill valve, 3. Install new fill valve.



Image: A detailed diagram showing the components of the 703A5B fill valve, including the shock nut and flow regulator, and instructions for replacing the seal and rinsing out debris.

## OPERATING INSTRUCTIONS

---

The Fluidmaster 703AP4 fill valve operates automatically to refill your toilet tank after each flush. Once installed, it will maintain the proper water level for optimal flushing performance.

- After flushing, the water level in the tank will drop, causing the fill valve to activate.
- The valve will quickly refill the tank to the predetermined water line.
- Once the desired water level is reached, the valve will automatically shut off the water flow.

## MAINTENANCE

---

Regular maintenance can extend the life of your fill valve and ensure optimal performance. If you notice slow refilling or continuous running, the valve may need cleaning.

### Replacing Seal and Rinsing Out Debris:

Refer to the diagram in the Installation section (Image: Diagram for replacing Fluidmaster 703A5B fill valve) for visual guidance.

1. **Turn off Water:** Turn off the water supply to the toilet.
2. **Unlock Valve:** Turn the top of the fill valve counter-clockwise 1/8 turn to unlock it.
3. **Remove Float Arm:** Remove the float arm assembly from the valve body.
4. **Rinse Debris:** Place a cup over the top of the valve and turn on the water supply for several seconds to flush out any debris.
5. **Inspect Seal:** Inspect the disc shut-off seal for any damage or wear. Replace if necessary.
6. **Reassemble:** Reinsert the float arm and turn the valve top clockwise to lock it back into place. Ensure the side bubbler is set horizontally.

## TROUBLESHOOTING

Here are some common issues and their potential solutions:

Problem	Possible Cause	Solution
Toilet runs continuously	Water level too high, debris in valve, worn seal	Adjust water level, clean valve (see Maintenance), replace seal.
Slow tank refill	Low water pressure, debris in valve, kinked supply line	Check water supply pressure, clean valve (see Maintenance), ensure supply line is not kinked.
Toilet does not flush properly	Water level too low	Adjust water level higher.
Leaking at base of valve	Loose mounting nut, damaged shank washer	Tighten mounting nut, inspect and replace shank washer if damaged.

## SPECIFICATIONS

Attribute	Detail
Brand	Fluidmaster
Model Number	703AP4 (also 745839830632)
Material	Metal, Plastic
Inlet Connection Size	2 Inches
Inlet Connection Type	Fill
Valve Type	Float Valve
Item Weight	6.9 ounces
Package Dimensions	9.17 x 7.83 x 2.56 inches
Compatibility	Glacier Bay and Niagara Flapperless Toilets

## WARRANTY AND SUPPORT

### Warranty Information:

The Fluidmaster 703AP4 Specialty Toilet Fill Valve comes with a **1-year warranty** from the date of purchase. This warranty covers defects in materials and workmanship under normal use and service.

### Customer Support:

For technical assistance, troubleshooting, or warranty claims, please visit the official Fluidmaster website or contact their customer service department. You can often find detailed FAQs and support resources online.

**Fluidmaster Official Website:** [www.fluidmaster.com](http://www.fluidmaster.com)

When contacting support, please have your product model number (703AP4) and proof of purchase readily available.



This manual is for informational purposes only. Fluidmaster is not responsible for any damages or injuries resulting from improper installation or use of this product.

Documents - Fluidmaster – 703AP4

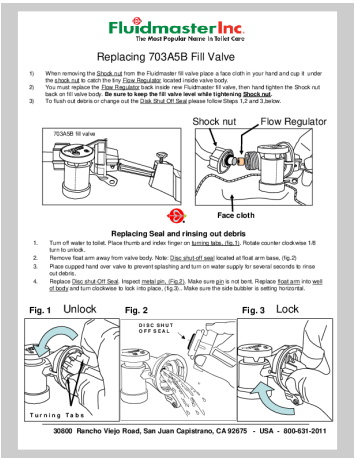


[pdf] Installation Guide Instructions Specifications Warranty Catalog

Microsoft Word WarrantyInfo1.docx Fluidmaster Specialty Toilet Fill Valve for Glacier Bay and Niagara Flapperless Toilets 703AP4Specialty WarrantywarrantyFluidmaster 703AP4 039961371348 0039961371348 1004157102Fluidmaster The Home Depot8ca48fe6 1d86 44d1 be2a b4a1a96902cb8ca48fe6 b4a1a96902cbimages thdstatic catalog Images 8c 8ca48fe6 b4a1a96902cb WarrantyWarrantywarrantyFluidmaster 681B Tank Lever BuildFluidmaster b4a1a96902cbfluidmaster 681b warranty8ca48fe6 b4a1a96902cbs1 img b build mediabase specifications fluidmaster 1236501 warrantyimages |||

Limited 1 Year Express Warranty Subject to the Exclusions set forth below, Fluidmaster, Inc. promises to the consumer to repair, or at the option of Fluidmaster, Inc. to replace any part of this plumbing product which proves to be defective in workmanship or materials under normal use for the nu...

lang:en score:20 filesize: 198.15 K page\_count: 1 document date: 2017-08-21



[pdf] Installation Guide Catalog

Replacing 703A5B Fill Valve LWright Fluidmaster Specialty Toilet for Glacier Bay and Niagara Flapperless Toilets 703AP4Specialty Installation Guideinstallation guideFluidmaster 703AP4 039961371348 0039961371348 1004157102Fluidmaster The Home Depota1112f14 7856 46ec 9d90 dc84c891d223a1112f14 dc84c891d223images thdstatic catalog Images a1 a1112f14 dc84c891d223 ||| Replacing 703A5B Fill Valve 1 When removing the Shock nut from the Fluidmaster fill valve place a face cloth in your hand and cup it under the shock nut to catch the tiny Flow Regulator located inside valve body. 2 You must replace the Flow Regulator back inside new Fluidmaster fill valve, then ha...

lang:en score:19 filesize: 41.88 K page\_count: 1 document date: 2008-12-17