

manuals.plus /

› [Teslong](#) /

› [Teslong 5MP Auto-Focus USB Endoscope User Manual](#)

Teslong 8595768091

# Teslong 5MP Auto-Focus USB Endoscope User Manual

Model: 8595768091

Brand: Teslong

## 1. PRODUCT OVERVIEW

The Teslong 3rd Generation USB Borescope is a high-resolution inspection camera featuring a 5.0 megapixel ultra HD module and an auto-focus camera. It is designed for detailed visual inspections in various environments, offering clear imaging from both near and far distances. The device includes a 16.5ft waterproof semi-rigid cable and adjustable LED lights, making it suitable for automotive, HVAC, plumbing, and general home inspection tasks.



Image 1.1: The Teslong 5MP Auto-Focus USB Endoscope, showcasing its main unit, flexible cable, various USB connectors, and a carrying case. Examples of its use with a laptop and smartphone are also depicted.

## 2. PACKAGE CONTENTS

Please verify that all items listed below are included in your package:

- Auto-focus endoscope unit
- Useful Accessories (Mirror, Hook, Magnet)
- Carrying case
- User Manual

# Useful Accessories



Magnet



Mirror



Hook



Image 2.1: Close-up view of the included useful accessories: a magnet, a mirror, and a hook, designed to attach to the endoscope probe for enhanced functionality.

## 3. SETUP AND COMPATIBILITY

The Teslong endoscope offers broad compatibility with various devices. Follow these steps to set up your endoscope:

1. **For Android Smartphones:** Ensure your Android phone supports the OTG (On-The-Go) function. Connect the endoscope using the appropriate Micro-USB or Type-C connector. You may need to enable OTG in your phone's settings. Download a compatible USB camera application (e.g., "USB Camera" by ShenYao or the Teslong HD Camera app) from the Google Play Store.
2. **For Windows PC:** Connect the endoscope to an available USB port on your computer. Install the "Endoscope HD Camera" application from the Teslong website or use the built-in Windows Camera app.
3. **For MacBook:** Connect the endoscope to an available USB port. The device should be recognized as a webcam. You can use applications like Photo Booth or QuickTime Player to view the camera feed.

**Important Note: This endoscope does NOT support iOS devices (iPhones/iPads).**



Image 3.1: Visual representation of the endoscope's wide compatibility, featuring Micro-USB, USB, and Type-C connectors for seamless integration with Android smartphones, Windows PCs, and MacBooks. A clear notice indicates no iPhone support.

# Wide Compatibility

Work with the Android phones with OTG function & MacBook & Windows PC

Notice: Not Support iPhone!



Image 3.2: This image illustrates the advantage of the Teslong endoscope's semi-rigid cable, which maintains its shape for easier navigation into tight or complex spaces, compared to a standard soft cable.

## 4. OPERATING INSTRUCTIONS

Once connected to your device and the appropriate application is running, you can begin using your Teslong endoscope:

- **Auto-Focus Function:** The endoscope features an auto-focus camera that automatically adjusts to provide the clearest image from various distances, eliminating the need for manual focus adjustments. This ensures optimal depth of field for your inspections.
- **Adjustable LED Lights:** The probe is equipped with adjustable LED lights. Use the control wheel on the cable to increase or decrease the brightness, ensuring adequate illumination in dark inspection areas.
- **Semi-Rigid Cable:** The 16.5ft semi-rigid cable can be bent and held in various shapes, allowing you to maneuver the camera into difficult-to-reach locations such as pipes, engine compartments, or wall cavities.
- **Capturing Images/Videos:** Most compatible applications will have options to capture still images or record video. Refer to your chosen application's interface for specific controls.





Image 4.1: A side-by-side comparison demonstrating the superior clarity and detail provided by Teslong's 5.0MP HD autofocus camera compared to a standard fixed-focus endoscope, highlighting the benefit of automatic focus adjustment.

## Wide Depth of Field 0.7inch to 100ft

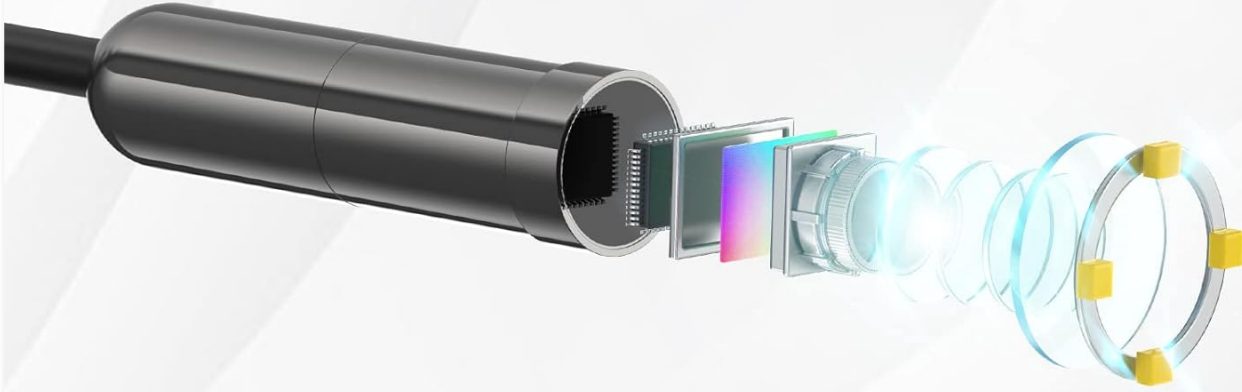


Image 4.2: This image illustrates the impressive wide depth of field of the Teslong endoscope, capable of clearly capturing objects from as close as 0.7 inches to as far as 100 feet, suitable for diverse inspection needs.



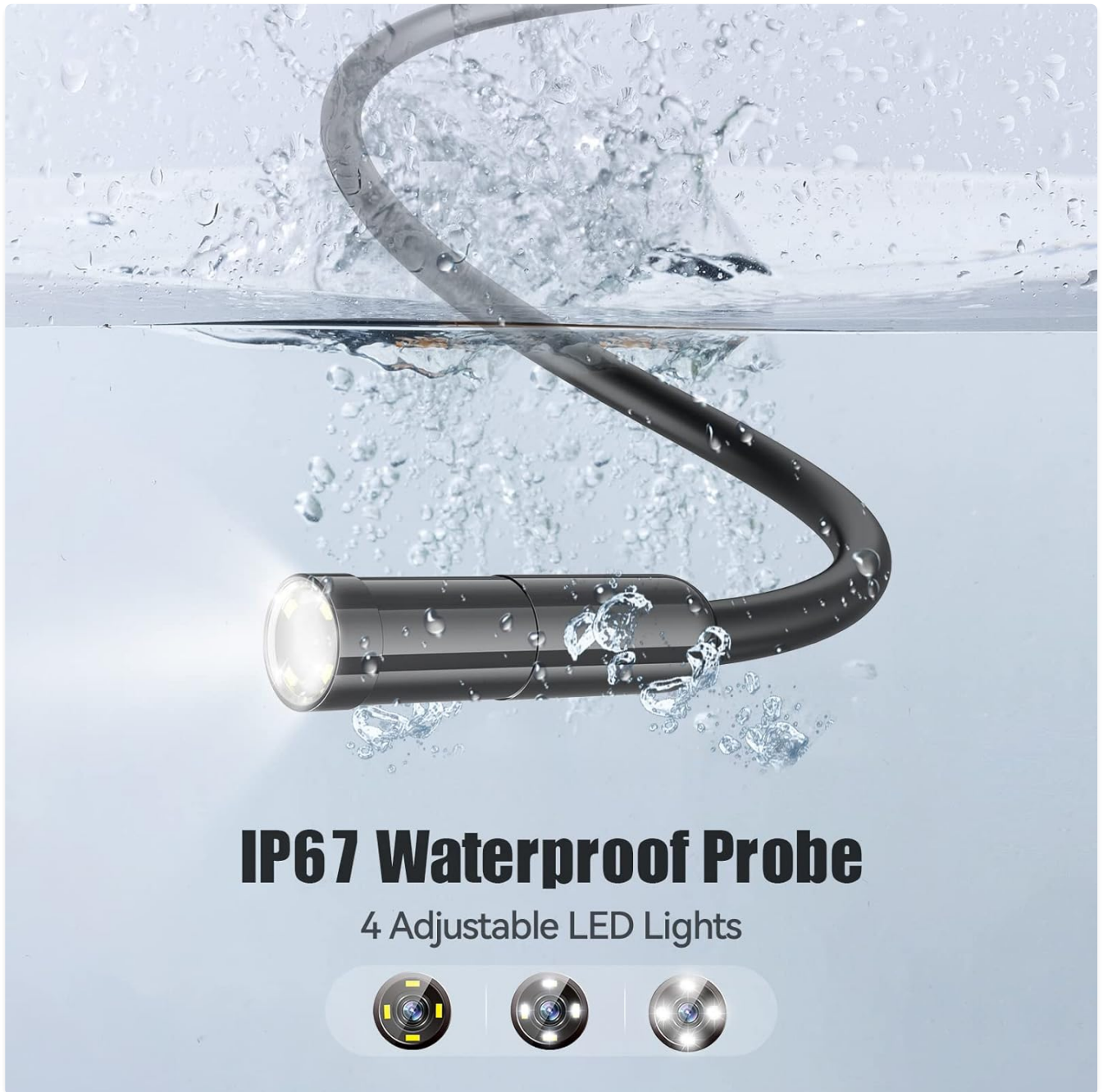


Image 4.3: The endoscope probe is shown submerged in water, visually confirming its IP67 waterproof rating. The image also highlights the four adjustable LED lights on the probe tip.





Image 4.4: A collage depicting common use cases for the Teslong endoscope, including pipeline checking, air conditioning maintenance, general home inspection, and automotive repair.

## 5. MAINTENANCE

Proper maintenance ensures the longevity and optimal performance of your endoscope:

- **Cleaning the Probe:** After use, especially in dirty or wet environments, gently wipe the camera lens and probe with a soft, damp cloth. For stubborn grime, a mild, non-abrasive cleaning solution can be used, ensuring no liquid enters the main control unit.
- **Drying:** Although the probe is waterproof, ensure it is thoroughly dried before storing, especially if used in liquids.
- **Cable Care:** Avoid sharp bends or kinks in the semi-rigid cable, as this can damage internal wiring. Coil the cable loosely for storage.
- **Storage:** Store the endoscope and its accessories in the provided carrying case in a cool, dry place, away from direct sunlight and extreme temperatures.

## 6. TROUBLESHOOTING

If you encounter issues with your Teslong endoscope, refer to the following common problems and solutions:

Problem	Possible Cause	Solution
No image on screen / Device not recognized	Incorrect connection; OTG not enabled (Android); Driver issue (PC); Incompatible app.	Ensure the connector is fully inserted. For Android, verify OTG is enabled in settings. Try a different USB port. Reinstall or try another compatible camera app. Restart your device.
Poor image quality / Blurry image	Dirty lens; Insufficient lighting; Beyond optimal focus range.	Clean the camera lens gently. Adjust the LED light brightness. While the camera is auto-focus, ensure the object is within the 0.7 inch to 100 ft range.
App crashes or freezes	App incompatibility; System resource issue.	Try a different camera application. Close other background applications. Ensure your device's operating system is up to date.
LED lights not working	Brightness control set to minimum; Device not powered.	Rotate the brightness control wheel to increase illumination. Ensure the endoscope is properly connected and receiving power from your device.

## 7. TECHNICAL SPECIFICATIONS

Feature	Specification
Camera Resolution	5.0 Megapixel (2594x1944)
Focus Type	Auto-Focus
Cable Length	16.5 feet (approx. 5 meters)
Cable Type	Semi-Rigid
Waterproof Rating	IP67 (Probe only)
Illumination	Adjustable LED Lights
Connectivity	USB, Micro-USB, Type-C
Compatibility	Android (with OTG), Windows PC, MacBook (Not compatible with iOS)
Macro Focus Range	0.7 inch
Item Weight	1 pound
Package Dimensions	7.28 x 5.67 x 2.28 inches

## 8. WARRANTY AND SUPPORT



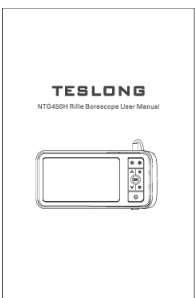

Teslong is committed to providing high-quality products and excellent customer service.

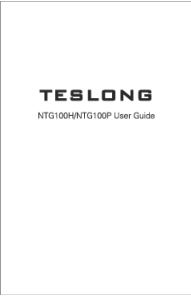

- **Warranty:** Your Teslong endoscope comes with a worry-free warranty. For specific warranty terms and conditions, please refer to the documentation included with your product or contact Teslong customer service.
- **Customer Service:** If you have any questions, require technical assistance, or need to report an issue, please contact Teslong's friendly customer service team. You can often find contact information on the Teslong official website or through the retailer where you purchased the product.

For more information and support, visit the official Teslong Store: [Teslong Store on Amazon](#)

© 2025 Teslong. All rights reserved.

### Related Documents - 8595768091

	<p><a href="#">Teslong NTG100 Rifle Borescope User Manual   Inspection Camera Guide</a></p> <p>Comprehensive user manual for the Teslong NTG100 Rifle Borescope. Learn how to connect, operate, and use the inspection camera on Windows, Mac, and Android devices. Includes specifications and troubleshooting tips.</p>
	<p><a href="#">Teslong NTS300 Inspection Camera User Manual and Guide</a></p> <p>Comprehensive user manual for the Teslong NTS300 inspection camera, detailing features, specifications, operating instructions, settings, and customer support.</p>
	<p><a href="#">Teslong NTG450H Rifle Borescope User Manual and Specifications</a></p> <p>Comprehensive user manual for the Teslong NTG450H Rifle Borescope, detailing its features, functions, safety guidelines, specifications, and customer service information. Designed for firearm inspection and maintenance.</p>
	<p><a href="#">Teslong NTG500 Digital Borescope User Manual and Product Information</a></p> <p>Comprehensive guide to the Teslong NTG500 Digital Borescope, detailing product specifications, usage instructions, photo/video functions, file transfer, and charging. Features a 5-inch screen for firearms enthusiasts.</p>

	<p><a href="#">TESLONG NTG100H/NTG100P Rifle Borescope User Guide</a></p> <p>User manual for TESLONG NTG100H and NTG100P borescopes, covering product description, setup for Windows, Mac, and Android, focusing, LED adjustment, and specifications.</p>
	<p><a href="#">Teslong TD100 Borescope Manual: Features, Instructions, and Safety</a></p> <p>Comprehensive manual for the Teslong TD100 automotive borescope. Learn about its features, installation, operation, safety guidelines, and technical specifications for effective use in automotive diagnostics and maintenance.</p>