

Manuals+

[Q & A](#) | [Deep Search](#) | [Upload](#)

Manuals.plus /

- › [AgPubs](#) /
- › International Cub Cadet Tractor Model 86 108 Operator's Manual

AgPubs 86 108

International Cub Cadet Tractor Model 86 108 Operator's Manual

For Models 86 and 108

1. INTRODUCTION

This manual provides detailed instructions for the safe and efficient operation, basic maintenance, and adjustments of your International Cub Cadet Tractor Models 86 and 108. Familiarize yourself with all sections to ensure proper use and longevity of your equipment.

For specific repair or overhaul procedures, refer to a dedicated Service Manual. For exploded views and factory part numbers, consult a Parts Catalog.

Description	Page No.
SERVICE MANUAL INFORMATION	1
INTRODUCTION	2, 3
SERIAL NO. LOCATION	4
CONTENTS	5, 6
SAFETY INSTRUCTIONS	7, 8, 9, 10, 11
INSTRUMENTS AND CONTROLS	11 to 15
BEFORE OPERATING YOUR NEW TRACTOR	15, 16
OPERATING THE ENGINE	17
FUEL SYSTEM	18
DRIVING THE TRACTOR	19, 20
EQUIPMENT LEFT HANDLE	20, 21
REAR POWER TAKE-OFF	21
FRONT POWER TAKE-OFF	22 to 25
ELECTRIC LIFT	25, 26
HYDRAULIC LIFT	27
ENGINE COOLING AND AIR CLEANER	28 to 30
ELECTRICAL SYSTEM	31
PNEUMATIC TIRES	32
FRONT WHEELS	33, 35
CLUTCH-BRAKE	34, 35
STORING THE TRACTOR	36
EXTRA EQUIPMENT AND ACCESSORIES	37 to 42
TRUBLE SHOOTING	43 to 45
LUBRICATION TABLE	47 to 54
LUBRICATION GUIDE	55
SPECIFICATION GUIDE	56
OPERATING INSTRUCTIONS (INTERNATIONAL ROTARY MOWERS)	57
INTRODUCTION	58, 59
INTRODUCING YOUR MOWER	60
OPERATING AND OPERATING	61
ADJUSTING AND STOPPING THE MOWER	62, 63
Starting and stopping the mower	64
Level adjustment	65
Height of cut	66
V-Belt	67, 68
Clearing	69
Blade care	70, 71
Mowing	72
Lubrication	73
General	74
Attaching and detaching the mower	75
Safety suggestions	76
INDEX	77, 78

Image: The table of contents from the operator's manual, showing sections like Service Manual

2. SAFETY INSTRUCTIONS

Always prioritize safety when operating the tractor. Read and understand all safety decals on the tractor and follow the instructions in this manual. Failure to do so can result in serious injury or death.

- Never allow children or untrained persons to operate the tractor.
- Always wear appropriate safety gear, including eye protection and sturdy footwear.
- Ensure all guards and safety devices are in place and functioning correctly before operation.
- Do not operate the tractor on steep slopes or uneven terrain where stability may be compromised.
- Turn off the engine, remove the key, and allow all moving parts to stop before performing any maintenance or adjustments.

3. BEFORE OPERATING YOUR NEW TRACTOR

Before starting your tractor for the first time, or after extended storage, perform a thorough pre-operation check. This includes inspecting fluid levels, tire pressure, and ensuring all controls operate smoothly.

3.1. Instruments and Controls

Familiarize yourself with the location and function of all instruments and controls before operating the tractor. This includes the ignition switch, throttle lever, choke control, brake pedal, clutch pedal, and gearshift lever.

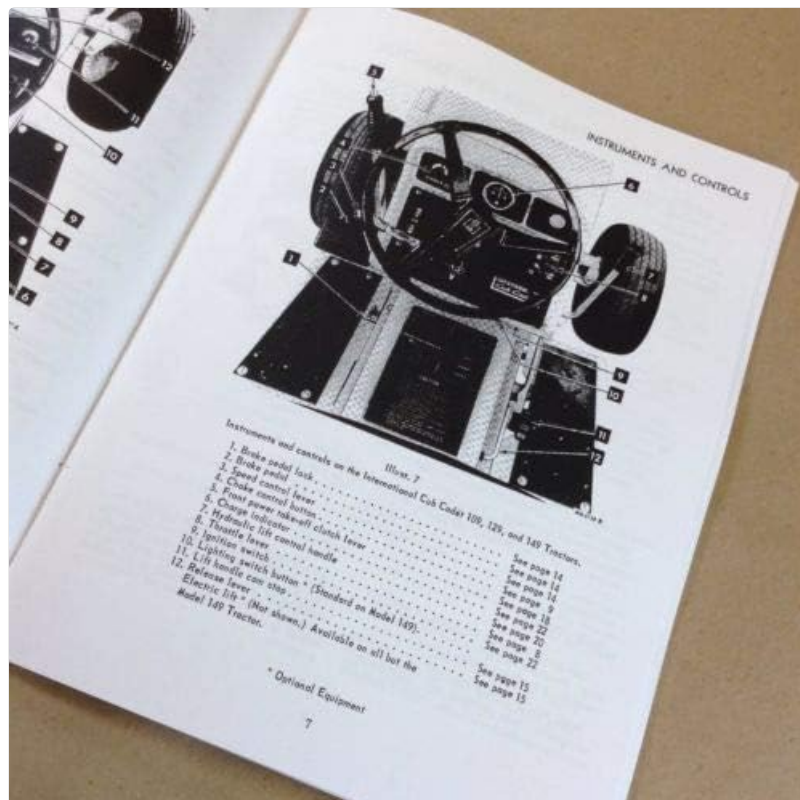


Image: A diagram illustrating the layout of instruments and controls on the International Cub Cadet 109, 129, and 149 Tractors, with numbered labels pointing to specific components like the brake pedal, clutch pedal, and various levers.

4. OPERATING THE ENGINE

4.1. Starting the Engine

1. Ensure the tractor is in neutral and the parking brake is engaged.
2. Move the throttle lever to the 'START' position.
3. If the engine is cold, pull the choke control out.
4. Turn the ignition key to the 'START' position. Release the key once the engine starts.
5. Gradually push the choke control in as the engine warms up.

4.2. Stopping the Engine

1. Move the throttle lever to the 'IDLE' position.
2. Turn the ignition key to the 'OFF' position.
3. Remove the key to prevent unauthorized use.

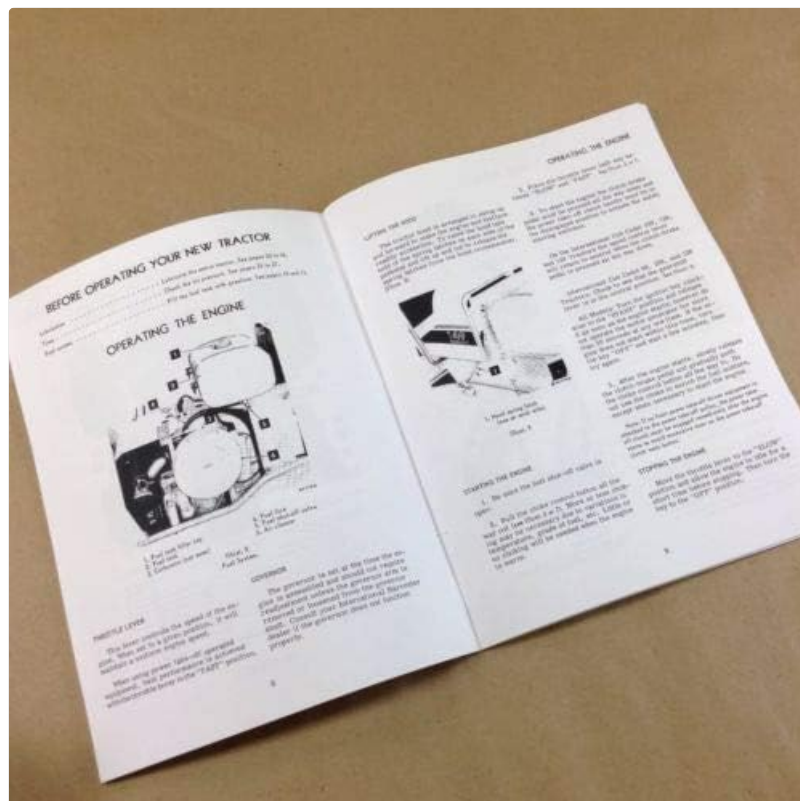


Image: A page from the manual detailing how to operate the engine, including diagrams of engine components like the fuel tank cap and fuel shut-off valve, alongside instructions for lifting the hood and starting/stopping the engine.

5. DRIVING THE TRACTOR

5.1. Clutch-Brake Pedal

The combination clutch-brake pedal is used to disengage the engine from the transmission when shifting gears or to apply the brake. Press the pedal all the way down to engage the safety starting switch when starting the engine.

5.2. Gearshift Lever

This lever is used to select various gear ratios. Refer to the 'SPECIFICATIONS' section for available speeds. Always stop the tractor before shifting gears.

5.3. Starting the Tractor in Motion

1. Disengage the clutch by pressing the clutch pedal all the way down, and release the brake.
2. Move the gearshift lever to the desired speed.
3. Start the tractor in motion by slowly releasing the clutch pedal and moving the throttle lever to the position where the engine operates best for the load to be handled.

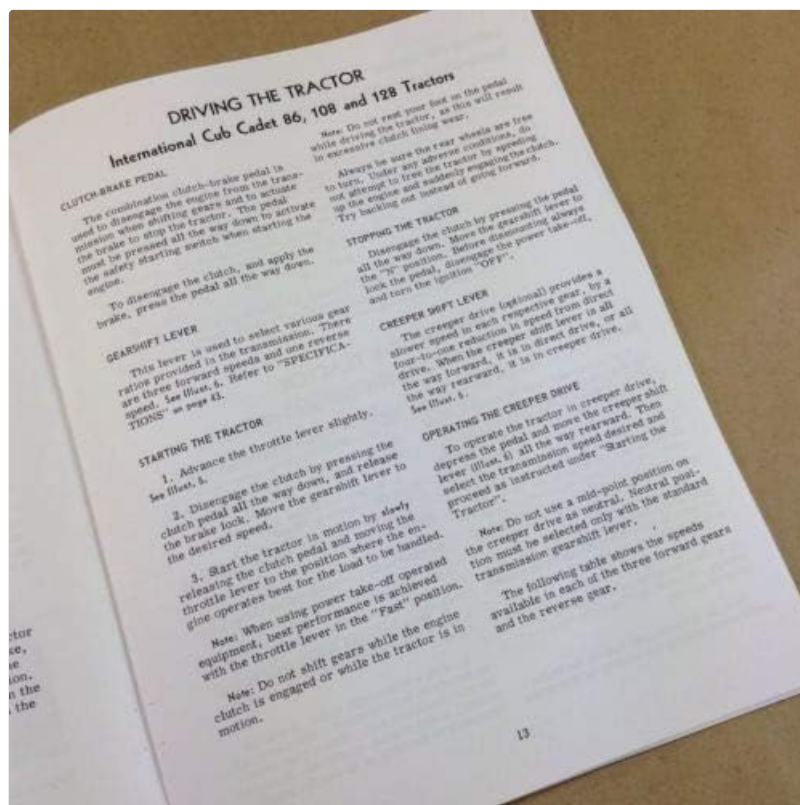


Image: A page from the operator's manual providing detailed instructions for driving the International Cub Cadet 86, 108, and 128 Tractors, covering the clutch-brake pedal, gearshift lever, and starting the tractor in motion.

6. REAR POWER TAKE-OFF (PTO)

If your tractor is equipped with a rear power take-off, the following instructions should be carefully followed. Always ensure the PTO is disengaged before attaching or detaching implements.

6.1. Operating the Rear Power Take-Off with the Tractor Standing Still

1. Move the throttle lever back to the 'SLOW' speed.
2. Depress the pedal and move the transmission gearshift lever to the neutral position.
3. Move the shifter lever (Ill. 17A) forward to the engaged position.
4. Move the throttle lever forward to the 'FAST' position and slowly release the pedal.

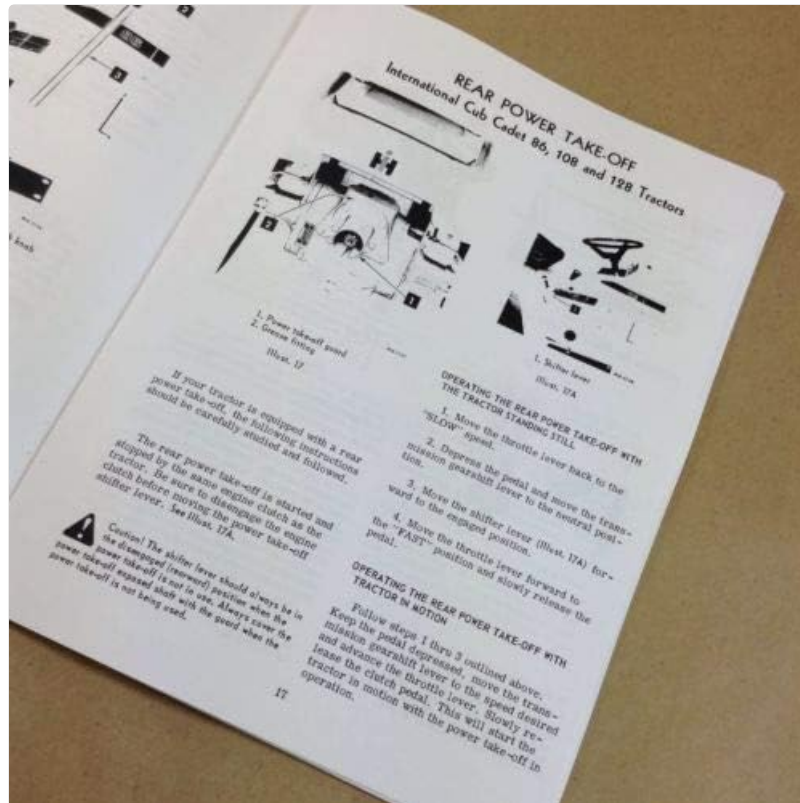


Image: A manual page illustrating the rear power take-off (PTO) system for International Cub Cadet 86, 108, and 128 Tractors, with diagrams and step-by-step instructions for operating the PTO both when the tractor is stationary and in motion.

7. HYDRAULIC LIFT

The hydraulic lift system allows for raising and lowering implements. Ensure the hydraulic fluid level is correct before operation. Refer to the 'LUBRICATION' section for fluid specifications.

8. ENGINE COOLING AND AIR CLEANER

8.1. Engine Cooling

This tractor has an air-cooled engine. Air must circulate freely around the engine. Keep the engine, shroud, and over the deck free of grass, dirt, and other debris. Periodically clean for adequate cooling.

8.2. Dry Type Air Cleaner

The dry type air cleaner filters incoming air for combustion. Regularly inspect and clean the air cleaner element. To clean the element, remove wing nut, air cleaner cover, then remove the element. Tap it gently on a hard surface to remove loose dirt. Do not wash or use a solvent. Replace the element if damaged or excessively dirty.

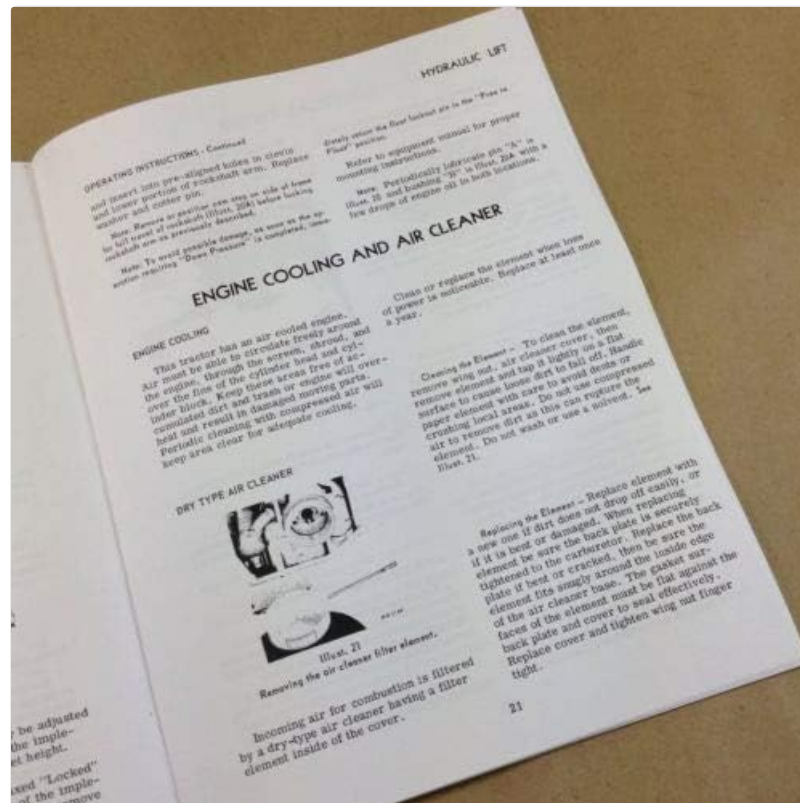


Image: A page from the manual detailing operating instructions for the hydraulic lift and maintenance for the engine cooling system and dry type air cleaner, including a diagram for removing the air cleaner element.

9. FRONT WHEELS

9.1. Front Quick Attaching Latch

This latch (Ill. 27D) is used for front and center mounted equipment. Refer to the equipment manual for proper instructions.

9.2. Front Wheel Toe-In

The front wheels should have an equal angle for left and right turns. If adjustment is necessary, remove the ball joint and loosen the lock nut 'D' (Ill. 27B). Turn the drag link ball joint clockwise or counterclockwise as required.

9.3. Turning Radius

Adjusting the front wheel toe-in affects the turning radius. Ensure proper toe-in for optimal steering and tire

wear.

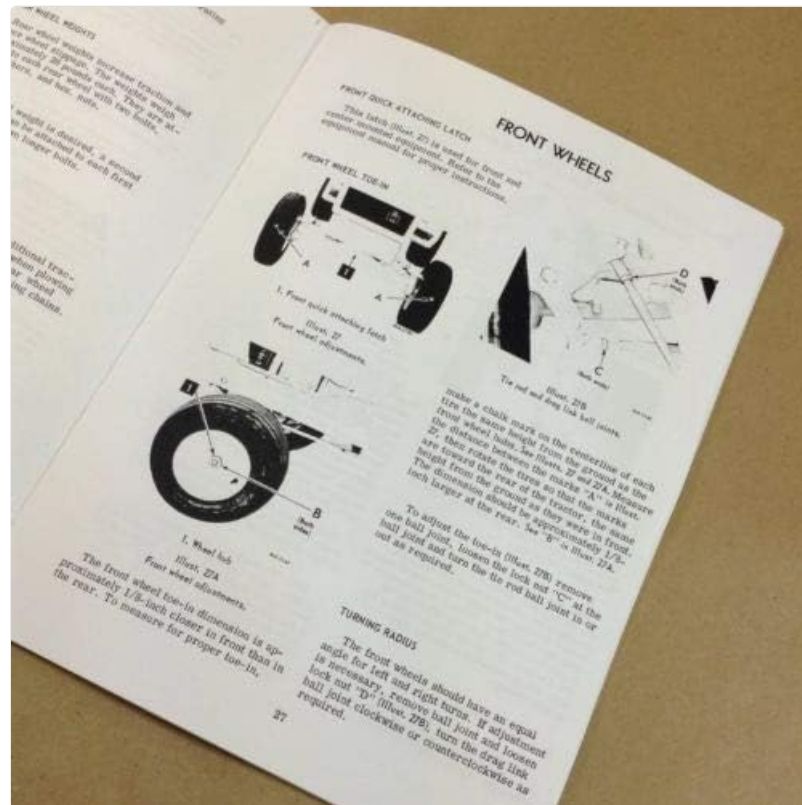


Image: A manual page illustrating the front wheels section, including diagrams for the front quick attaching latch and front wheel toe-in adjustments, with corresponding text instructions.

10. STORING THE TRACTOR

For extended storage, prepare your tractor to prevent corrosion and damage. Clean the tractor thoroughly, drain or stabilize fuel, remove the battery, and store it in a dry, protected area.

11. TROUBLESHOOTING

This section provides guidance for common operational issues. If you encounter a problem not listed here, or if the suggested solutions do not resolve the issue, consult a qualified service technician.

- **Engine Fails to Start:** Check fuel level, spark plug, battery charge, and ignition system.
- **Loss of Power:** Inspect air filter, fuel filter, and ensure proper throttle adjustment.
- **Unusual Noises:** Stop the tractor immediately and investigate the source of the noise.

12. LUBRICATION

Regular lubrication is crucial for the performance and lifespan of your tractor. Refer to the lubrication chart

(if available in the full manual) for specific lubrication points, types of lubricants, and frequency.

- Check engine oil level daily.
- Grease all pivot points and bearings as recommended.
- Inspect hydraulic fluid and transmission fluid levels regularly.

13. SPECIFICATIONS

This section outlines key technical specifications for the International Cub Cadet Tractor Models 86 and 108.

Feature	Specification
Brand	AgPubs (Manual Publisher)
Material	Paper (Manual)
Operation Mode	Manual
UPC	752589923095
Models Covered	International Cub Cadet 86, 108

14. WARRANTY AND SUPPORT

For information regarding the warranty of your International Cub Cadet Tractor, please refer to the original purchase documentation or contact an authorized dealer. This operator's manual itself is a reproduction by AgPubs, designed to be a durable and accurate guide.

For technical support or service inquiries, please contact your local International Cub Cadet service center or an authorized technician.