

[Manuals.plus](#) /

> [AOK motors](#) /

> AOK motors AM25 RF Solar Powered Rechargeable Battery Motor Kit User Manual for 1.5" Roller Shades

AOK motors AM25-ES-E

AOK motors AM25 RF Solar Powered Rechargeable Battery Motor Kit User Manual

For 1.5" Roller Shades (Model: AM25-ES-E)

INTRODUCTION

This manual provides comprehensive instructions for the installation, operation, and maintenance of your AOK motors AM25 RF Solar Powered Rechargeable Battery Motor Kit. This kit is designed to convert existing 1.5-inch roller shades into motorized blinds, offering enhanced convenience and safety. Please read this manual thoroughly before proceeding with installation or operation.

SAFETY INFORMATION

- Read all instructions carefully before installation and use to ensure proper function and prevent injury.
- Keep the motor and remote control away from water, moisture, and excessive heat sources.
- Ensure all components are securely installed to prevent the shade from falling or causing accidents.
- Do not attempt to modify the motor or its components. Unauthorized modifications may void the warranty and create safety hazards.
- Keep remote controls out of reach of children to prevent unintended operation of the blinds.

PACKAGE CONTENTS

Verify that all items listed below are included in your kit:

- AM25 Rechargeable Battery Motor
- Tube Adapters (Motor Crown and Drive)
- Plug Charger
- Remote Control (1-channel)
- Shade Brackets/Mounting Hardware
- USB Charging Cable



Image: Complete kit contents, showing the motor, remote, charger, and mounting accessories.

SETUP

1. Compatibility Check

Before installation, ensure your existing roller shade tube meets the following specifications:

- **Outer Diameter (OD):** 1.5 inches (38mm)
- **Inner Diameter (ID):** 1-5/16 inches (34mm)

Also, confirm that the provided mounting brackets are compatible with your installation surface and desired mounting style (inside or outside mount).

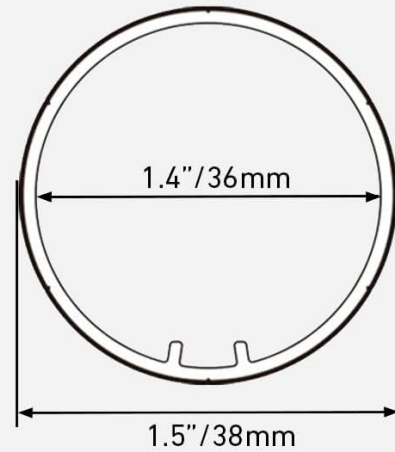
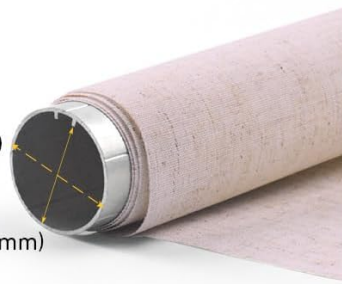
Please examine carefully if your tube and bracket is compatible

Compatible With 38mm Tubes



OD: Φ 1-1/2"(38mm)

ID: 1-5/16"(34mm)



Compatible Brackets



Image: Visual guide for compatible tube sizes and bracket types.

2. Motor Installation into Shade Tube

Insert the AM25 motor into your 1.5-inch roller shade tube. Attach the appropriate tube adapters (motor crown and drive) to the motor ends to ensure a snug fit within the shade tube. The motor drive and rubber crown are included to facilitate this.

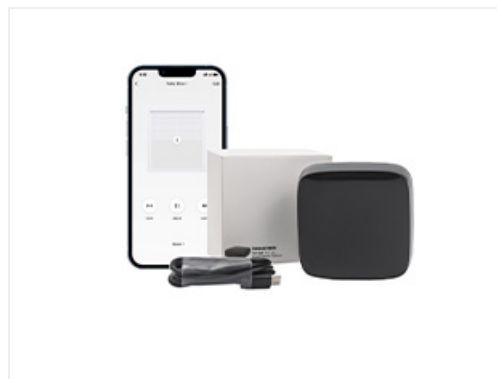


Image: Motor drive and rubber crown assembly.

3. Mounting the Shade

Secure the provided shade brackets to the wall or ceiling using appropriate fasteners. Once the brackets are firmly in place, install the motorized shade assembly into the brackets. Ensure the motor's charging port is accessible.

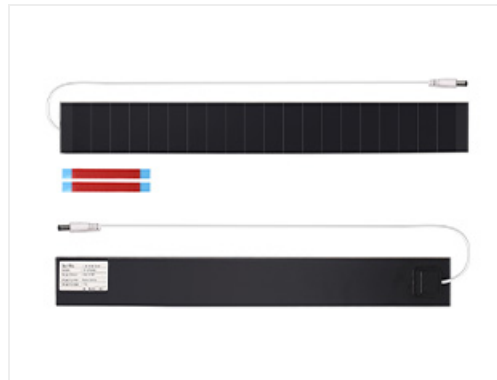


Image: Example of a mounting bracket.

4. Initial Charging

Fully charge the motor using the provided plug charger and USB cable before its first use. A red LED flashing 10 times daily indicates that the motor requires charging. A full charge typically takes approximately 3 hours with a 5V/2A fast charger.

Wireless Battery Motor



35db



Recharge able
Battery

Charging for

3 hours

Running

600 times

(About half a year)

TWO TYPES OF EXTERNAL POWER SUPPLY

Red Led Flash 10 times in daily using means the motor need to be charged.

- 1** Solar panel is Optional.
No need to worry about the Charging any more.

*OPTIONAL



(B0CSKDG5WG)



USB 2.0port

- 2** 5V/2A fast charging, fully charged in 3 hours



OPERATING INSTRUCTIONS

1. Remote Control Pairing

To pair the remote control with the motor, refer to the specific instructions included with your remote control. This process typically involves a sequence of button presses on both the motor and the remote.

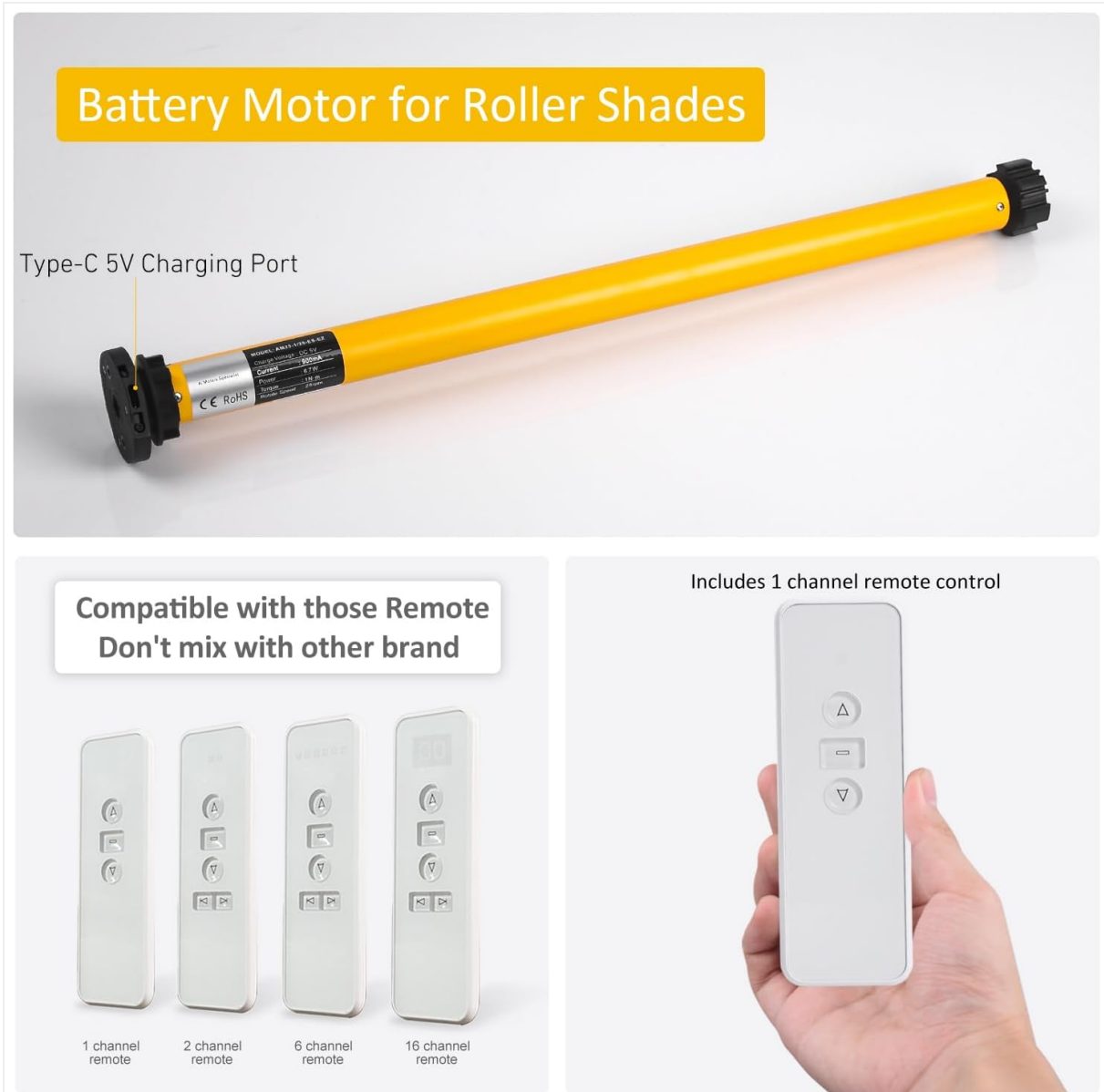


Image: Motor with Type-C port and remote control types.

2. Setting Upper and Lower Limits

After pairing, program the desired upper and lower stopping points for your shade. This defines the full open and full closed positions. Consult the remote control's specific instructions for the exact limit setting procedures. Accurate limit setting is crucial for proper operation.

3. Basic Operation

Use the Up, Down, and Stop buttons on the remote control to operate the shade. The Up button raises the shade, the Down button lowers it, and the Stop button halts movement at any desired position.



Image: Included 1-channel remote control.

4. Optional Solar Charging

If you have purchased the optional solar panel (sold separately), connect it to the motor's charging port. The solar panel is designed to help maintain the battery charge, reducing the frequency of plug charging. However, it may not fully power the motor without occasional plug charging, especially in areas with limited sunlight. It is recommended to monitor battery levels.

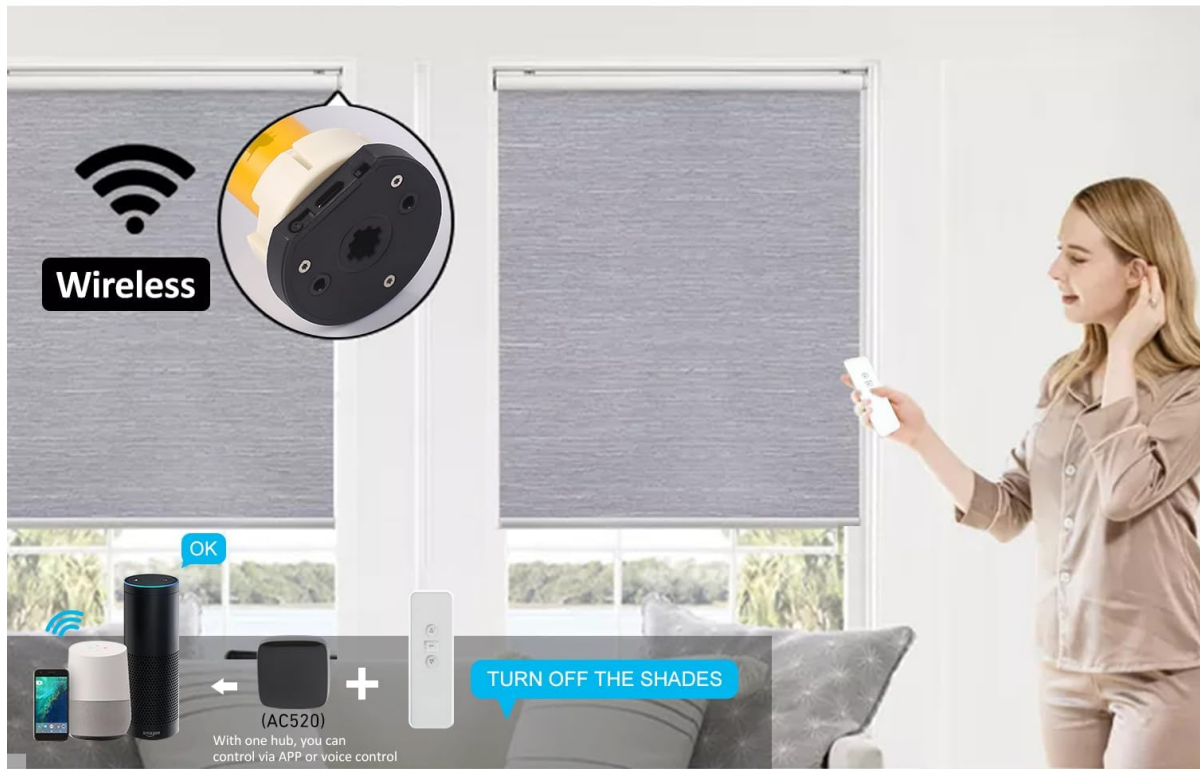


Image: Optional solar panel.

5. Smart Home Integration (Optional)

The AM25 motor utilizes RF433 for wireless communication. For voice control via smart assistants like Amazon Alexa or Google Assistant, a compatible smart hub (e.g., AC520-02, not included) is required. This hub acts as a bridge, translating RF signals to your Wi-Fi network, allowing control through a mobile application or voice commands.

DIY Motorized Blinds for Windows with Shades Motor Wireless



Please contact us for more details
Various of function for you to explore
[Via Smart Hub \(AC520-02\)](#)

Image: Smart home integration with Alexa and Google Home.

Voice Control by Alexa/Google Home

The roller motor build with rf433 and some third hub can be learn the signal (We do not sell the hub)



Image: Voice control setup diagram.

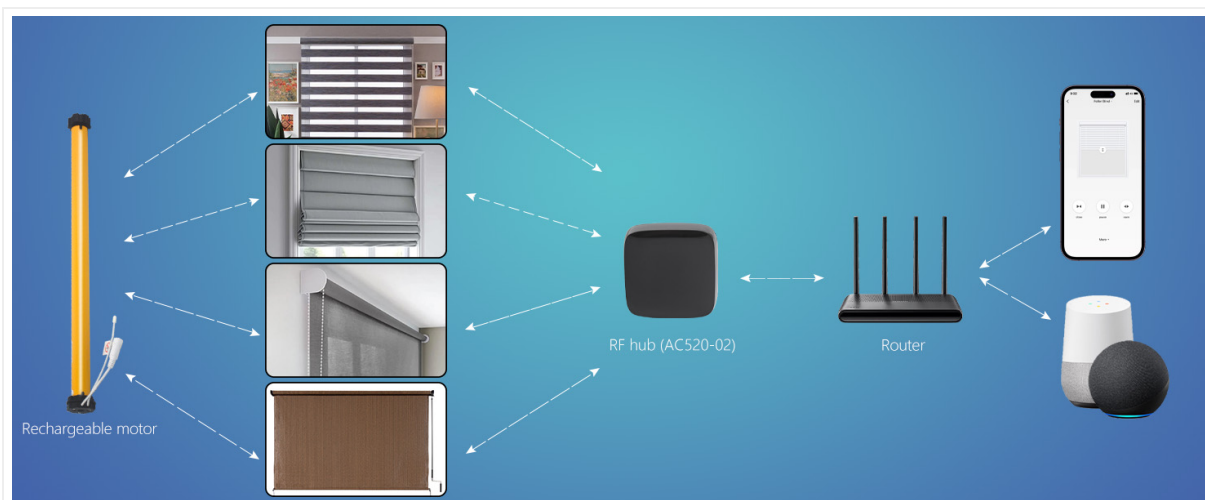


Image: Overview of multiple control modes.

MAINTENANCE

1. Charging

Recharge the motor approximately every 600 operations or when the red LED indicator flashes 10 times daily, signaling a low battery. A full charge takes about 3 hours using the provided 5V/2A fast charger.

2. Battery Life

The integrated Li-ion battery is designed for long-term performance. If using an optional solar panel, it is advisable to monitor its effectiveness and occasionally plug-charge the motor, especially if the solar panel does not include a charge controller, to prevent potential battery degradation over time.

3. Cleaning

Wipe the motor and remote control with a dry, soft cloth. Do not use abrasive cleaners, solvents, or immerse any part of the device in water.

TROUBLESHOOTING

- **Motor Not Responding:**

- Check if the motor is charged. Recharge if necessary.
- Ensure the remote control battery (CR2032) is functional and correctly inserted.
- Attempt to re-pair the remote control with the motor according to the remote's instructions.

- **Motor Not Running or Stopped Working:**

- Verify the power connection if the motor is currently charging.
- Check for any physical obstructions preventing the shade from moving freely.
- If the motor remains unresponsive after charging and troubleshooting, contact customer support.

- **Difficulty Programming Limits:**

- Refer to the detailed programming instructions specific to your remote control model.
- Ensure the motor is in the correct programming mode before attempting to set limits.
- If issues persist, contact customer support for assistance.

- **Shade Tube Compatibility Issues:**

- Double-check that your shade tube's outer diameter is precisely 1.5 inches (38mm). Incorrect tube size can prevent proper motor installation or smooth operation.

SPECIFICATIONS

Details&Main Function

WIFI Shade Motor

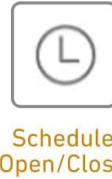
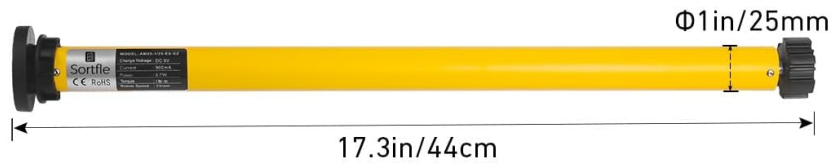


Image: Motor dimensions and control features overview.

Feature	Detail
Model Number	AM25-ES-E
Material	Metal, Plastic
Product Dimensions	43.5"L x 4"W
Color	Yellow
Operation Mode	Smart blinds motor with remote control
Special Feature	AM25 rechargeable blinds motor
Item Weight	2 Pounds
Closure Type	Motorized
Mounting Type	Inside Mount or Outside Mount
Control Type	Radio remote (RF433)
Compatible Tube Size	1.5" (38mm) Outer Diameter

Feature	Detail
Battery Type	Integrated Li-ion (Motor), 1 CR2032 (Remote)
Charging Time	Approx. 3 hours (with 5V/2A charger)
Operations per Charge	Approx. 600

WARRANTY & SUPPORT

For any technical assistance, troubleshooting, or inquiries regarding your AOK motors AM25 RF Solar Powered Rechargeable Battery Motor Kit, please contact our customer support team. This includes issues such as programming difficulties, forgotten limits, motor malfunction, or installation problems.

Contact Information:

- **Email:** sale@sortfle.com

Our seller service team is available to assist you promptly.