

UNIOJO B07HMW7RL6

UNIOJO WiFi Camera Indoor Instruction Manual

Model: B07HMW7RL6

1. PRODUCT OVERVIEW

The UNIOJO WiFi Camera Indoor is designed to provide comprehensive home surveillance with advanced features for monitoring your indoor spaces. It offers 24/7 Full HD recording, two-way audio communication, night vision capabilities, and motion detection alerts to keep you informed and your loved ones safe.



720P Camera



Motion Detection



Two-way Audio



WIFI



Quick & Easy setup



Day & Night



Multiple
Storage Options



Digital Zoom

Figure 1: UNIOJO WiFi Camera highlighting key features such as 720P HD, Motion Detection, Two-way Audio, WiFi connectivity, Quick & Easy setup, Day & Night vision, Multiple Storage Options, and Digital Zoom.



Figure 2: The UNIOJO WiFi Camera features a design that allows for 180-degree vertical adjustment and 360-degree horizontal rotation for flexible viewing angles.

MOTION DETECTION ACTIVITY ALERTS

When motion detection is turned on, the real-time alarm message will automatically prompt you on your phone.



Figure 3: The camera provides a 110-degree wide-angle view with 1280x720P HD resolution, allowing for comprehensive monitoring of an entire room.

Key Features:

- **24/7 Full HD Recording:** F/2.0 aperture, 110-degree wide-angle lens, 720p/30fps for clear picture capture.
- **Two-way Audio:** Built-in microphone and speaker for real-time communication.
- **Night Vision:** Non-invasive IR LEDs provide clear HD vision in low-light conditions.
- **Motion Detection & Activity Alerts:** Sends notifications to your phone when motion is detected.
- **Cloud Storage:** Supports cloud service to secure recorded videos and local backup via TF card (up to 32GB Class10 FAT32).
- **Easy Installation:** Quick setup via the GOSCOM app on App Store or Google Play.
- **Amazon Alexa Compatibility:** Hands-free control for taking pictures or video recording.

2. SETUP GUIDE

Follow these steps to set up your UNIOJO WiFi Camera:

1. **Power On:** Plug the power adapter into the camera and then into a power outlet. The camera will power on and may make some sounds, and a red light will flash, indicating it's ready for setup.

2. **Download the App:** Download the free "GOSCOM" app from the App Store (for iOS) or Google Play (for Android).
3. **Register Account:** Open the GOSCOM app and register a new account using your email address. Follow the in-app instructions to complete the registration and verification process.
4. **Add Device:** In the app, select the option to add a new device. Scan the QR code located on the back of your camera unit.
5. **Connect to Wi-Fi:** Enter your Wi-Fi network password when prompted by the app. Ensure your Wi-Fi is a 2.4GHz network, as the camera does not support 5GHz networks.
6. **Completion:** The camera will connect to your Wi-Fi network. This process may take approximately 2 minutes. Once connected, the camera will be online and ready for use.

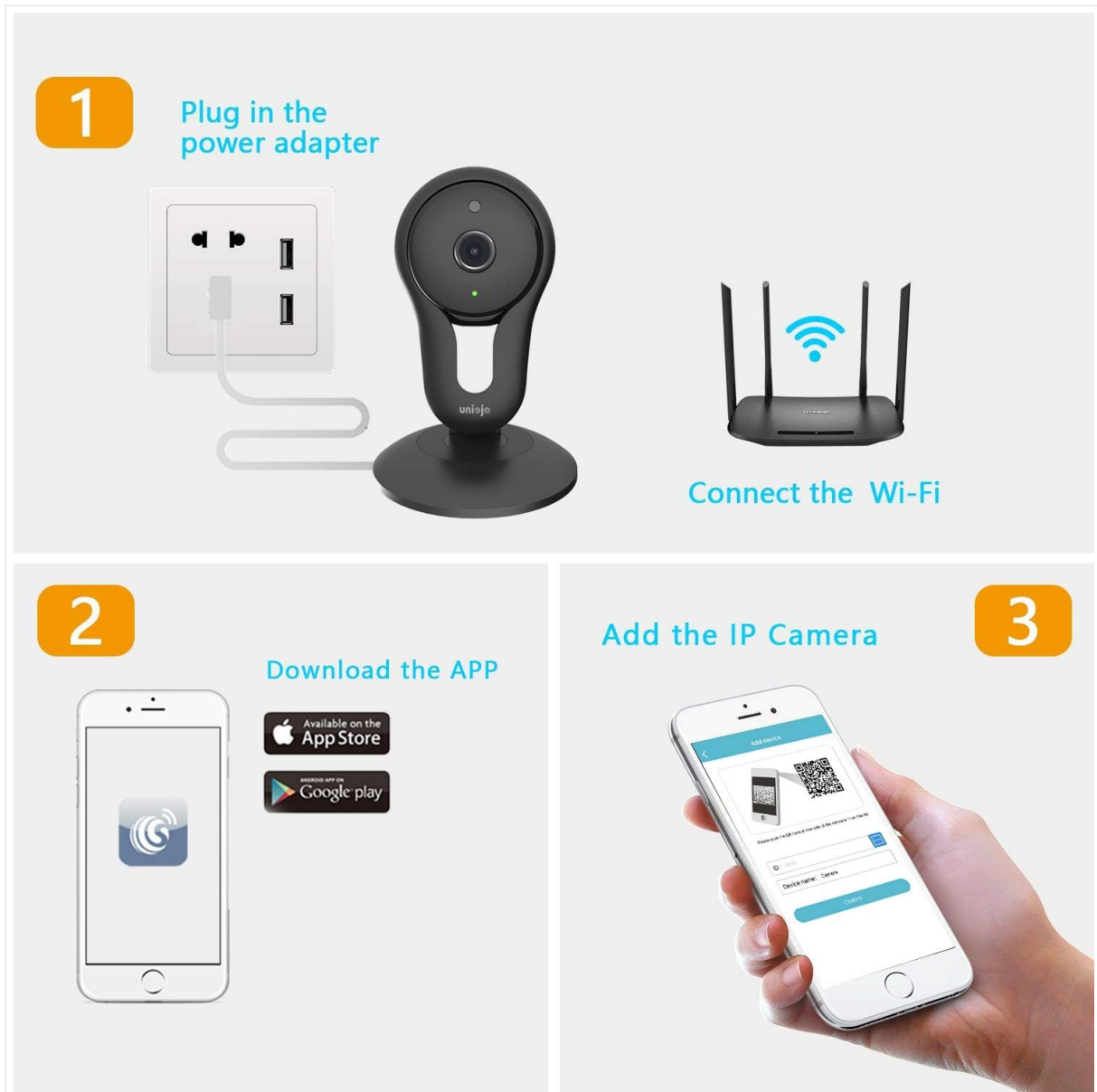


Figure 4: Visual guide for the setup process, including plugging in the power adapter, connecting to Wi-Fi, downloading the GOSCOM app, and adding the IP camera by scanning the QR code.

Video 1: An official product video demonstrating the setup process and key features of the UNIOJO HD WiFi Camera, including power connection, app installation, and basic operation.

3. OPERATING INSTRUCTIONS

3.1. Live View and Recording

Once the camera is connected, you can access the live video feed through the GOSCOM app. The camera provides 720p HD resolution for clear viewing. You can take pictures or record videos directly from the app, which will be saved to your phone's camera roll or the installed TF card/cloud storage.

3.2. Two-Way Audio

The camera features a built-in microphone and speaker, enabling two-way communication. Use this feature through the app to speak to individuals near the camera or comfort pets.



Figure 5: Illustration of the two-way audio feature, allowing users to communicate through the camera's built-in microphone and speaker.

3.3. Night Vision

The camera is equipped with non-invasive IR LEDs that automatically activate in low-light conditions, providing clear night vision. This ensures continuous monitoring even in complete darkness.

720P FHD QUALITY CLEAR IR NIGHT VISION

With high-performance IR LED offers bright night vision, it can capture the clear night living image at dark night.



Figure 6: The camera's 720P FHD quality and clear IR night vision allow it to capture bright and clear images in dark environments, as shown with a sleeping baby.

3.4. Motion Detection and Alerts

Enable motion detection in the app settings to receive real-time alert notifications on your phone when activity is detected. This feature helps you stay aware of any unusual movements in the monitored area.

110° wide view monitor entire room

1280*720P HD resolution, 110° wide-angle lens, Digital zoom up to 4x



Figure 7: When motion detection is active, the camera sends automatic real-time alarm messages to your smartphone, alerting you to detected activity.

3.5. Cloud Storage and Local Backup

The camera supports cloud storage to prevent data loss from the TF card and ensure all recorded videos are securely stored. For local backup, a Class10 TF card (up to 32GB, FAT32 format) can be inserted into the built-in TF card slot.

3.6. Amazon Alexa Integration

The UNIOJO WiFi Camera is compatible with Amazon Alexa Echo and Echo Dot. You can use voice commands for hands-free control, such as instructing the camera to take pictures or record video. *Note: This camera does not support Echo Show for live video display.*



Figure 8: The camera integrates with Amazon Alexa, allowing voice commands for functions like activating motion detection, as demonstrated with an Echo device.

4. MAINTENANCE

To ensure optimal performance and longevity of your UNIOJO WiFi Camera, follow these maintenance guidelines:

- **Cleaning:** Gently wipe the camera lens and body with a soft, dry cloth. Avoid using liquid cleaners or abrasive materials that could damage the surface or lens.
- **Placement:** Ensure the camera is placed in a stable location, away from direct sunlight, extreme temperatures, and high humidity.
- **Software Updates:** Regularly check the GOSCOM app for any available firmware or software updates for your camera. Keeping the software updated ensures the best performance and security.

5. TROUBLESHOOTING

If you encounter issues with your UNIOJO WiFi Camera, refer to the following common troubleshooting steps:

- **Camera Not Connecting to Wi-Fi:**

- Ensure your Wi-Fi network is 2.4GHz. The camera does not support 5GHz networks.
- Verify that the Wi-Fi password entered in the app is correct.
- Make sure the camera is within range of your Wi-Fi router.
- Try restarting your Wi-Fi router and the camera.
- If the issue persists, try resetting the camera (refer to the app or product packaging for reset instructions) and repeat the setup process.

• **App Freezes or Does Not Work Correctly:**

- Ensure your GOSCOM app is updated to the latest version.
- Close and reopen the app.
- Restart your smartphone.
- If the problem continues, try uninstalling and reinstalling the GOSCOM app.

• **Poor Video Quality or Lag:**

- Check your internet connection speed. A stable and fast connection is crucial for optimal video streaming.
- Reduce the video quality setting within the GOSCOM app if your network bandwidth is limited.
- Ensure there are no obstructions between the camera and your Wi-Fi router that could interfere with the signal.

• **Motion Detection Alerts Not Received:**

- Verify that motion detection is enabled in the GOSCOM app settings for the specific camera.
- Check your phone's notification settings to ensure the GOSCOM app has permission to send notifications.
- Adjust the motion detection sensitivity in the app if necessary.

6. SPECIFICATIONS

Feature	Detail
Brand	UNIOJO
Model Number	B07HMW7RL6
Compatible Devices	Smartphone
Power Source	AC/DC
Connectivity Protocol	Wi-Fi (2.4GHz)
Controller Type	Android, iOS
Mounting Type	Wall Mount
Video Capture Resolution	720p
Color	Black
Number of Items	1 (per pack, product is 2 pack)
Frame Rate	30 fps

Feature	Detail
Material	Plastic
Voltage	5 Volts
Wattage	6 watts
Focus Type	Manual Focus
Low Light Technology	Night Color
Alert Type	Motion Only
Indoor/Outdoor Usage	Indoor
Video Capture Format	MP4
International Protection Rating	IP67
Control Method	Voice (via Alexa)
UPC	611885156692
Item Weight	1.01 pounds
First Available Date	September 24, 2018

7. WARRANTY AND SUPPORT

For warranty information or technical support, please refer to the contact details provided with your product packaging or visit the official UNIOJO website. Ensure you have your product model number (B07HMW7RL6) and purchase details ready when contacting support.

You can also visit the [UNIOJO Store on Amazon](#) for more product information and resources.