



Manuals.plus /

- › ZENY /
- › ZENY Professional Stainless Steel Electric Meat Slicer 7.5" Blade Instruction Manual

ZENY B07HKC2TRG

ZENY Professional Stainless Steel Electric Meat Slicer (Model B07HKC2TRG) Instruction Manual

INTRODUCTION

This manual provides detailed instructions for the safe and efficient operation, maintenance, and care of your ZENY Professional Stainless Steel Electric Meat Slicer. Please read all instructions carefully before initial use to ensure proper function and to prevent injury or damage.



Figure 1: ZENY Electric Meat Slicer with its main components visible.

IMPORTANT SAFETY INSTRUCTIONS

WARNING: To reduce the risk of injury, always follow these basic safety precautions.

- **Read all instructions:** Familiarize yourself with the appliance before operation.
- **Blade Hazard:** The cutting blade is extremely sharp. Always handle with extreme care. Never touch the blade directly.
- **Unplug Before Cleaning:** Always unplug the slicer from the power outlet before assembling, disassembling, cleaning, or performing any maintenance.
- **Use Food Pusher:** Always use the food pusher to guide food. Never use your hands to push food towards the blade.
- **Stable Surface:** Operate the slicer only on a clean, dry, stable, and level surface.
- **Keep Clear:** Keep hands, hair, clothing, and utensils away from the moving blade during operation.
- **Children and Pets:** This appliance is not intended for use by children. Keep the slicer out of reach of children.

and pets.

- **Electrical Safety:** Do not immerse the motor unit in water or other liquids. Do not operate with a damaged cord or plug.
- **Intended Use:** Use this appliance only for its intended purpose as described in this manual.

PRODUCT COMPONENTS

Your ZENY Electric Meat Slicer consists of several key components designed for efficient and safe food preparation.

- **7.5-inch Stainless Steel Serrated Blade:** The primary cutting component.
- **Food Carriage:** Platform where food is placed for slicing.
- **Food Pusher:** Safety device used to hold and guide food.
- **Thickness Adjustment Knob:** Controls the slicing thickness.
- **On/Off Switch:** Controls power to the unit.
- **Motor Case:** Houses the motor and internal mechanisms.
- **Anti-Slip Rubber Feet:** Ensures stability during operation.

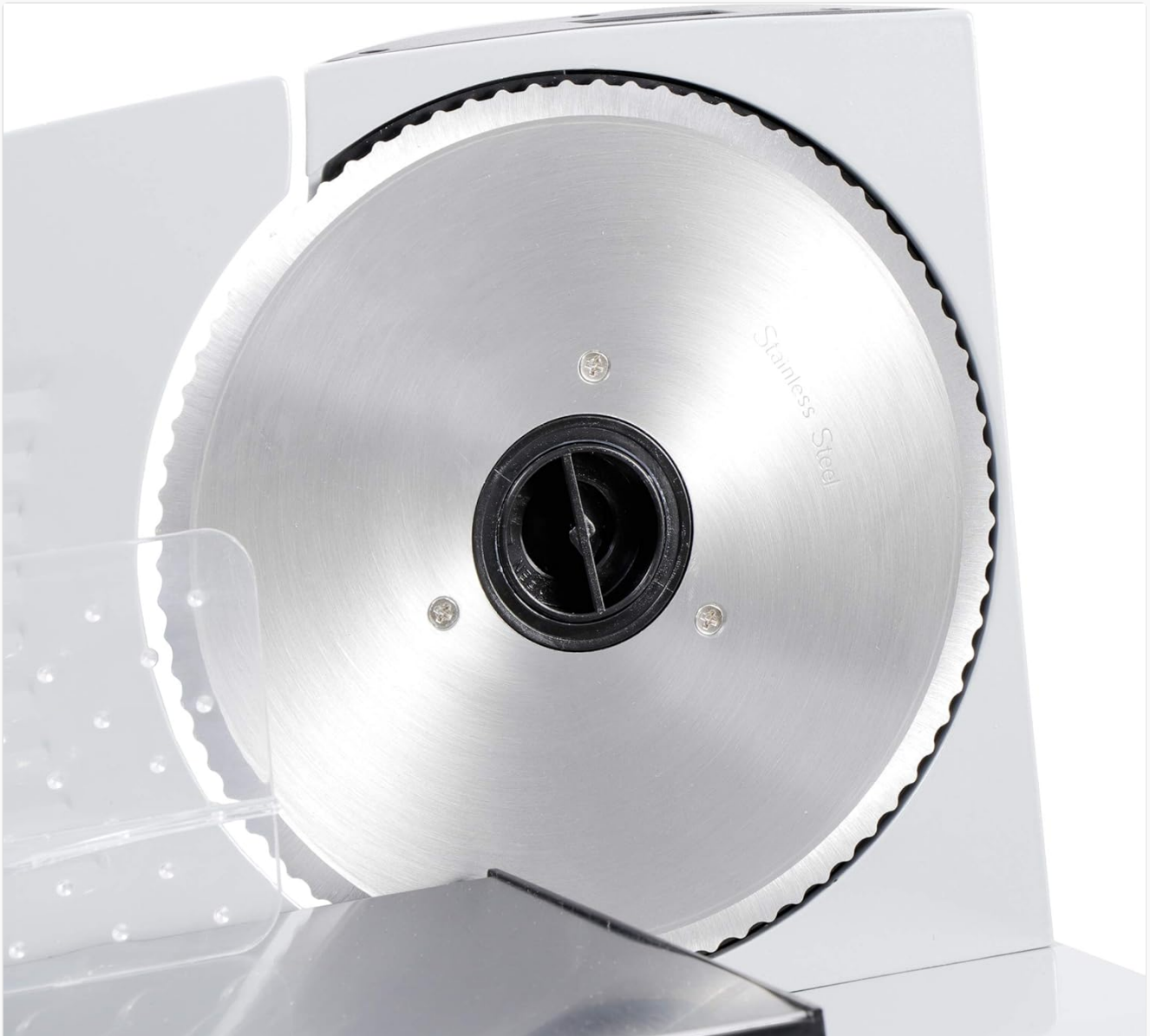


Figure 2: Close-up view of the 7.5-inch stainless steel serrated blade.



Figure 3: Rear view of the slicer, showing the motor case and thickness adjustment knob.

SETUP

Before using your meat slicer for the first time, follow these setup steps:

1. **Unpack:** Carefully remove all packaging materials and inspect the slicer for any signs of damage. Retain packaging for future storage or transport.
2. **Placement:** Place the slicer on a clean, dry, stable, and level countertop or table. Ensure there is sufficient space around the unit for safe operation. The anti-slip rubber feet should firmly grip the surface.
3. **Clean Components:** Before first use, clean all parts that will come into contact with food. Refer to the "Cleaning and Maintenance" section for detailed instructions.
4. **Blade Installation (if removed):** Ensure the 7.5-inch stainless steel blade is securely installed. Follow the instructions for blade removal in the "Cleaning and Maintenance" section in reverse to install.
5. **Power Connection:** Ensure the On/Off switch is in the "OFF" position before plugging the power cord into a standard 120V/60Hz electrical outlet.



Figure 4: ZENY meat slicer unpacked from its box.

OPERATING INSTRUCTIONS

Follow these steps for safe and effective slicing:

1. **Prepare Food:** Ensure the food item (meat, cheese, bread, vegetables) is firm and free of bones or hard objects. For best results, chill meats slightly before slicing.
2. **Adjust Thickness:** Use the thickness adjustment knob to set your desired slice thickness. The knob allows for adjustments from super thin to approximately 3/4 inch (19mm). Turn the knob clockwise for thicker slices and counter-clockwise for thinner slices.



Figure 5: A hand adjusting the thickness knob on the ZENY meat slicer.

- Place Food:** Place the food item onto the food carriage. Ensure it rests firmly against the back plate and is secured by the food pusher.



Figure 6: Demonstration of placing food on the carriage and using the food pusher.

4. **Power On:** Press the On/Off switch to turn on the slicer. The blade will begin to rotate.
5. **Slice Food:** Using the food pusher, gently guide the food carriage back and forth, pushing the food against the rotating blade. Apply even, steady pressure.



Figure 7: Another view of operating the slicer, showing proper hand placement.

6. **Collect Slices:** Sliced food will fall onto the tray or surface behind the blade.
7. **Power Off:** Once slicing is complete, press the On/Off switch to turn off the slicer. Wait for the blade to come to a complete stop before handling.
8. **Unplug:** Always unplug the slicer from the power outlet after use.

CLEANING AND MAINTENANCE

Regular cleaning and maintenance will ensure the longevity and hygienic operation of your slicer.

1. **Safety First:** Always ensure the slicer is turned OFF and UNPLUGGED from the power outlet before cleaning.
2. **Remove Blade:** The 7.5-inch serrated blade is designed to be removable for easy cleaning. Carefully follow the manufacturer's instructions for blade removal, typically involving unscrewing a central knob or latch.
3. **Hand Wash Only:** All removable parts, including the blade, food carriage, and food pusher, should be hand washed with warm, soapy water. Rinse thoroughly and dry immediately to prevent rust.
4. **Clean Main Unit:** Wipe down the motor case and other non-removable parts with a damp cloth. Do not immerse the main unit in water or spray it with liquids.
5. **Reassemble:** Once all parts are clean and dry, carefully reassemble the slicer. Ensure the blade is securely reinstalled.
6. **Storage:** Store the slicer in a clean, dry place, away from children.

TROUBLESHOOTING

If you encounter issues with your ZENY Electric Meat Slicer, refer to the following common problems and solutions:

Problem	Possible Cause	Solution
Slicer does not turn on.	Not plugged in; power switch off; power outage.	Ensure the power cord is securely plugged into a working outlet. Check the On/Off switch. Verify power to the outlet.
Inconsistent slice thickness.	Thickness knob not set correctly; food not firm; uneven pressure.	Adjust the thickness knob. Ensure food is chilled and firm. Apply consistent, gentle pressure with the food pusher.
Blade not cutting effectively.	Blade is dull; food is too soft or hard; blade is dirty.	Ensure the blade is clean and free of debris. For very soft foods, chill them to firm up. If the blade is dull, consider replacement (contact support).
Slicer moves during operation.	Not on a stable surface; anti-slip feet are dirty.	Place the slicer on a clean, dry, stable, and level surface. Clean the anti-slip rubber feet to ensure proper grip.

SPECIFICATIONS

Detailed technical specifications for the ZENY Professional Stainless Steel Electric Meat Slicer:

- **Brand:** ZENY
- **Model:** B07HKC2TRG
- **Blade Material:** Stainless Steel
- **Blade Diameter:** 7.5 inches
- **Motor Case Material:** Cast Aluminum
- **Food Pusher Material:** Plastic
- **Food Carriage Material:** Stainless Steel and Plastic
- **Overall Dimensions (L x W x H):** 13.7" x 10.6" x 11"
- **Voltage:** 120V / 60Hz
- **Power:** 150W
- **Slicing Thickness:** Adjustable from 1mm to 19mm (approx. 3/4 inch)
- **Item Weight:** 10 lbs

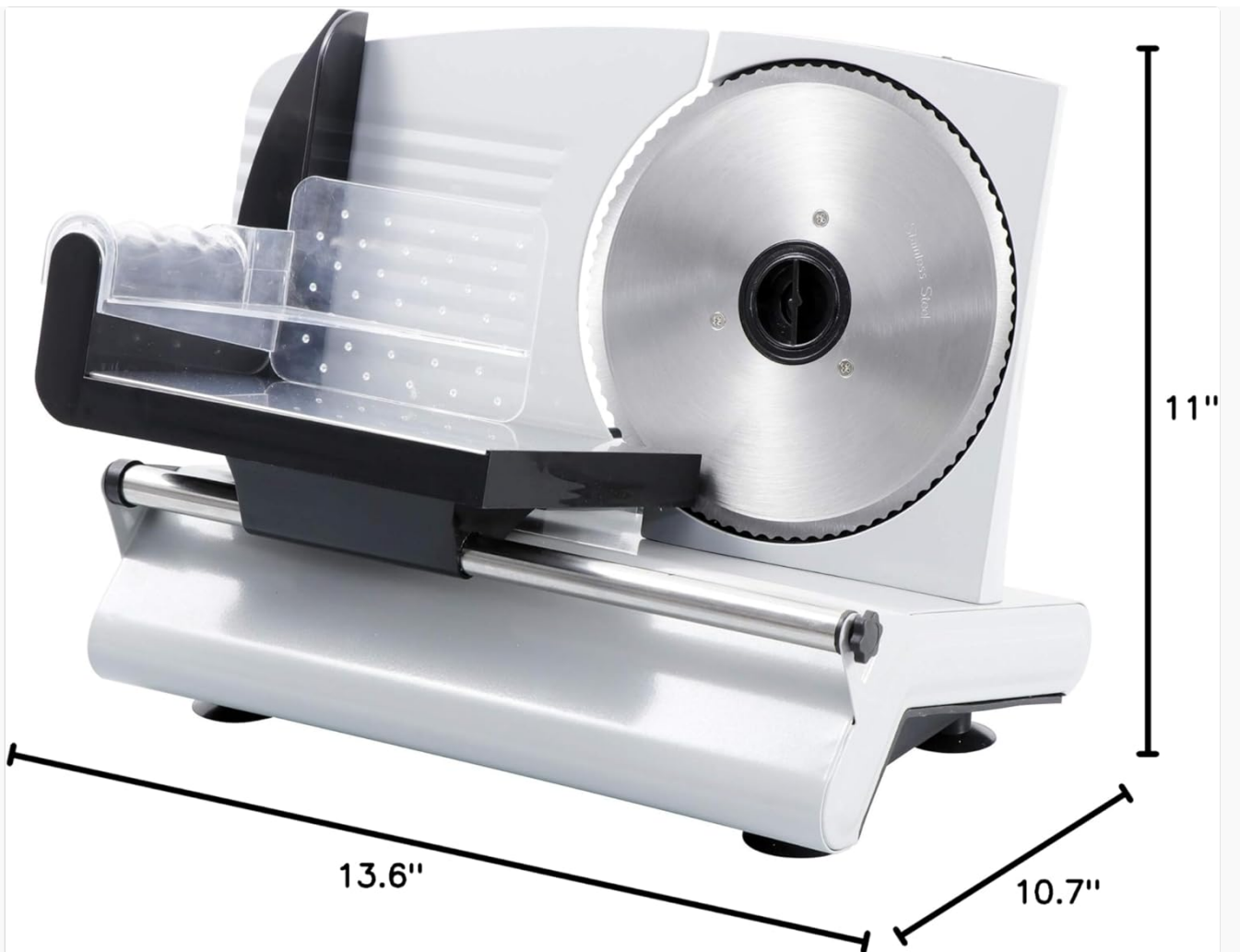


Figure 8: Dimensions of the ZENY Electric Meat Slicer.

WARRANTY AND SUPPORT

For warranty information regarding your ZENY Professional Stainless Steel Electric Meat Slicer, please refer to the documentation included with your purchase or visit the official ZENY website. Warranty terms and conditions may vary.

For technical support, replacement parts, or any other inquiries, please contact ZENY customer service through their official website or the contact information provided in your product packaging. Please have your model number (B07HKC2TRG) and purchase date available when contacting support.