

iRobot 4640235

iRobot Authentic Replacement Parts - Dirt Disposal Bags User Manual

Brand: iRobot | Model: 4640235

INTRODUCTION

The iRobot Authentic Replacement Dirt Disposal Bags are designed to provide a convenient and hygienic solution for managing dirt, dust, and hair collected by your Roomba robot vacuum with a Clean Base Automatic Dirt Disposal system. Each disposable bag is engineered to hold up to 60 days of debris, significantly reducing the frequency of manual emptying and ensuring a cleaner home environment for weeks at a time.

Using genuine iRobot parts is crucial for maintaining the optimal performance and longevity of your robot. Authentic parts are manufactured to precise specifications, ensuring perfect fit, seamless operation, and adherence to the robot's designed performance standards. Non-genuine parts may compromise material quality, fabrication methods, and overall system efficiency.

COMPATIBILITY

These Dirt Disposal Bags are compatible with the following i, j, and s series Clean Base Automatic Dirt Disposal models:

- Roomba i1+, Roomba i3+, Roomba i4+, Roomba i6+, Roomba i7+, Roomba i8+
- Roomba j6+, Roomba j7+, Roomba Combo j7+, Roomba j8+
- Roomba s9+
- Clean Base Auto-Fill dock for Roomba Combo j9+ robots
- AutoWash dock for Roomba Combo 10 Max robots

SETUP AND INSTALLATION

Replacing the dirt disposal bag in your Clean Base is a simple and dust-free process. Follow these steps:

1. **1. Open the Clean Base Lid:** Locate the lid on top of your Clean Base Automatic Dirt Disposal unit and lift it to reveal the bag compartment.



Image: A hand demonstrates inserting a new iRobot dirt disposal bag into the Clean Base unit. The diagram shows the path of dirt from the Roomba into the bag.

2. **2. Remove the Full Bag:** Gently pull up on the plastic tab of the full dirt disposal bag. The bag is designed to automatically seal itself as it is removed, preventing dust and debris from escaping. Dispose of the full bag in your household waste.
3. **3. Insert a New Bag:** Take a new iRobot Authentic Dirt Disposal Bag from its packaging. Slide the plastic collar of the new bag into the designated groove within the Clean Base compartment. Ensure it is seated firmly and correctly. The red indicator light on the Clean Base should turn off, indicating that a new bag has been properly installed.

iRobot®

— Authentic Parts —



Image: A close-up view of three new iRobot Authentic Dirt Disposal Bags, highlighting their design and the grey plastic collar for insertion.

4. **4. Close the Clean Base Lid:** Close the lid of the Clean Base unit securely. Your Roomba Clean Base is now ready for continued automatic dirt disposal.

MAINTENANCE

The frequency of bag replacement depends on usage and household debris levels. Typically, one Clean Base disposable bag can hold up to 60 days of dirt, dust, and hair. Your Roomba app will usually notify you when the bag is full and needs replacement.

Regularly check the bag level through the iRobot HOME App or by visually inspecting the Clean Base indicator light. Replace the bag promptly when full to ensure optimal suction performance and prevent odors.

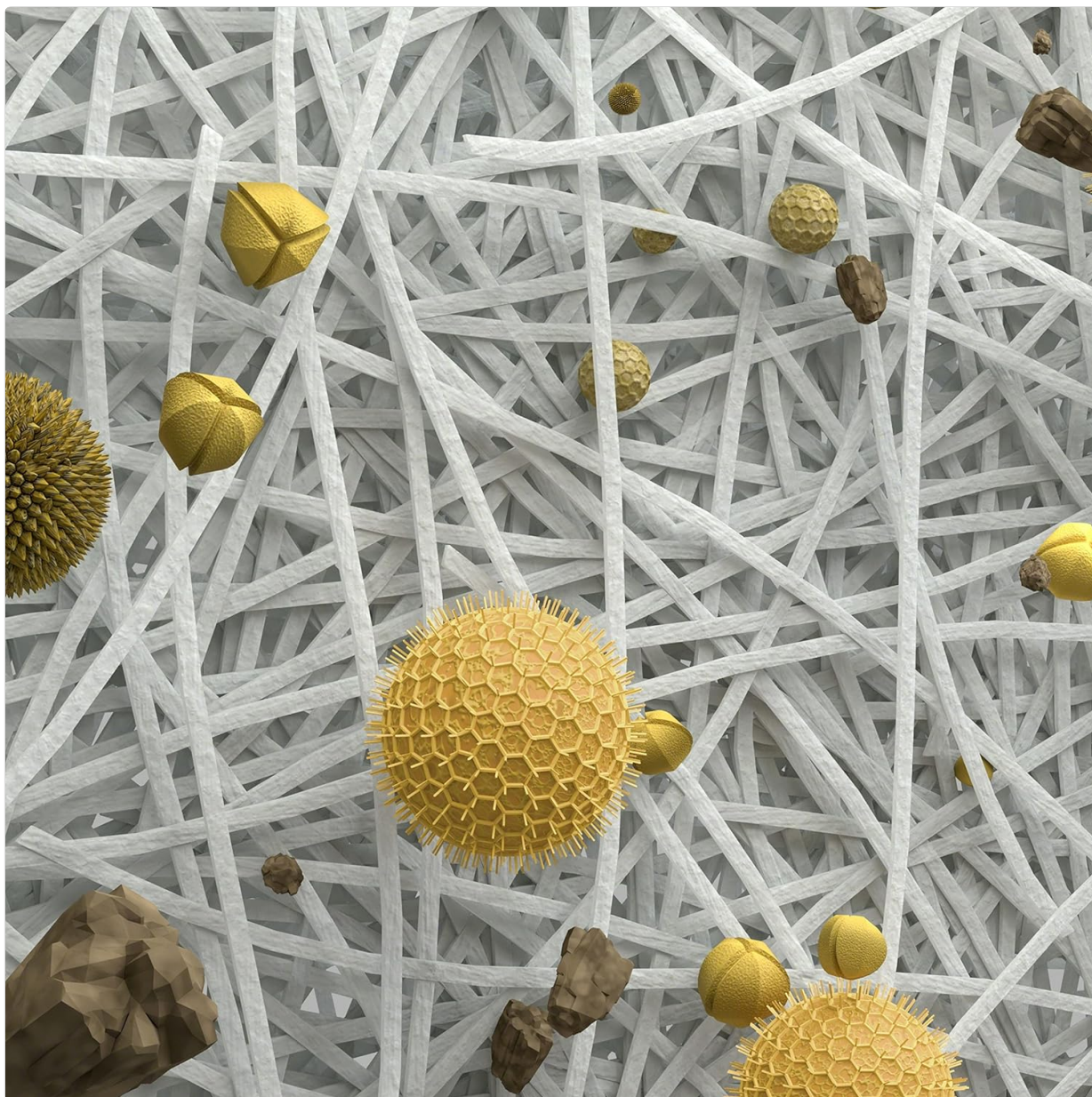


Image: A magnified view illustrating the multi-layer filtration material of the bag, designed to trap fine dust and allergens.

TROUBLESHOOTING

If your Clean Base is not disposing of dirt or indicates a full bag after replacement, ensure the new bag is correctly seated and the lid is fully closed. Check for any obstructions in the Clean Base's suction port or the Roomba's dust bin. If issues persist, refer to the iRobot HOME App for specific error codes and troubleshooting steps related to your Roomba model.

SPECIFICATIONS

Product Dimensions	4.1 x 1.91 x 6.44 inches
Item Weight	4.2 ounces
Manufacturer	iRobot
Item Model Number	4640235
Material	Plastic
Color	White

Included Components

3 Clean Base Automatic Dirt Disposal Bags

WARRANTY AND SUPPORT

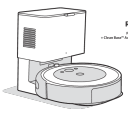

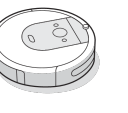



These iRobot Authentic Replacement Parts come with a **1 Year Limited Warranty** from the manufacturer.

For detailed instructions, warranty information, or further support, please refer to the official documentation:

- [Instructions for Use \(IFU\) \(PDF\)](#)
- [Warranty \(PDF\)](#)

You can also visit the [iRobot Store on Amazon](#) for more product information and support resources.

Related Documents - 4640235

 iRobot Roomba Combo i5+ Robot Vacuum and Mop	iRobot Roomba Combo i5+ User Manual This user manual provides comprehensive instructions for the iRobot Roomba Combo i5+ robot vacuum and mop, including setup, operation, maintenance, and troubleshooting. Learn how to use the Clean Base Automatic Dirt Disposal and the iRobot Home app for optimal cleaning.
 Safety Information Read and understand all safety information before using the robot vacuum and mop. This information is provided for your safety and the safety of others. Please read the safety information carefully and follow all instructions.	iRobot Roomba Combo Owner's Guide: Safety, Operation, and Maintenance This owner's guide for the iRobot Roomba Combo (models ADE-N2, RVB-Y2) provides essential safety information, operational instructions, and maintenance procedures for the robot vacuum and its Clean Base™ Automatic Dirt Disposal system. Learn how to set up, use, and care for your device for optimal performance.
 iRobot Roomba i7/i8 Robot Vacuum	iRobot Roomba i7/i8 Robot Vacuum Owner's Guide Comprehensive owner's guide for the iRobot Roomba i7 and i8 robot vacuums, covering safety information, setup, operation, maintenance, and troubleshooting.
 iRobot Roomba j7 Clean Base Automatic Dirt Disposal	iRobot Roomba j7 Clean Base Automatic Dirt Disposal Owner's Guide This guide provides essential safety information, setup instructions, and maintenance tips for the iRobot Roomba j7 Clean Base Automatic Dirt Disposal system. Learn how to properly position, use, and care for your device to ensure optimal performance and longevity.
 Safety Information Read and understand all safety information before using the robot vacuum and mop. This information is provided for your safety and the safety of others. Please read the safety information carefully and follow all instructions.	iRobot Roomba j7+ Owner's Guide: Safety, Operation, and Maintenance This owner's guide provides essential safety information, setup, operation, cleaning, and maintenance instructions for the iRobot Roomba j7+ robot vacuum and Clean Base™ Automatic Dirt Disposal. Learn how to use the iRobot Home app for advanced features.
 iRobot Roomba Combo j5+ Robot Vacuum and Mop	iRobot Roomba Combo j5+ Owner's Guide Comprehensive owner's guide for the iRobot Roomba Combo j5+ robot vacuum and mop with Clean Base automatic dirt disposal. Learn about setup, operation, maintenance, safety, and troubleshooting.