

[Manuals.plus](#) /

› [Toomax](#) /

› Toomax TUTTOPIANI Basso Rattan Mega Cabinet Instruction Manual

Toomax TUTTOPIANI Basso Rattan Mega

Toomax TUTTOPIANI Basso Rattan Mega Cabinet Instruction Manual

Model: TUTTOPIANI Basso Rattan Mega

Brand: Toomax

INTRODUCTION

Thank you for choosing the Toomax TUTTOPIANI Basso Rattan Mega Cabinet. This manual provides essential information for the safe assembly, operation, and maintenance of your new storage cabinet. Please read these instructions carefully before beginning assembly and retain them for future reference. This low rattan-effect cabinet is designed to offer practical and elegant storage for various environments, including balconies, terraces, garages, and laundry rooms. Its robust construction ensures durability, and the adjustable internal shelves provide optimized storage space.

SAFETY INFORMATION

- Assemble the cabinet with care to prevent injuries.
- Use only appropriate tools for assembly. No special tools are required, but a screwdriver for handles is recommended.
- Avoid exposing the cabinet to extreme conditions of humidity or temperature to prevent damage to the rattan material.
- Ensure the cabinet is placed on a stable, level surface to prevent tipping.
- Do not overload the shelves.
- Keep small children away from the assembly area.

PACKAGE CONTENTS

Before beginning assembly, ensure all components are present and undamaged. While a detailed list is not provided, the package typically includes:

- Cabinet panels (sides, top, bottom, back)

- Doors
- Adjustable shelves
- Handles and screws
- Assembly hardware (e.g., clips, pins, connectors)
- Instruction sheet

If any parts are missing or damaged, please contact Toomax customer support.

SETUP AND ASSEMBLY INSTRUCTIONS

The Toomax TUTTOPIANI Basso Rattan Mega Cabinet features a simple and intuitive assembly system that generally does not require special tools, though a screwdriver will be needed for attaching the handles. Follow the steps below carefully.

Step 1: Prepare the Area

Clear a spacious, clean, and level area for assembly. Lay out all components and hardware. It is advisable to place a soft cloth or cardboard on the floor to prevent scratching the cabinet parts.

Step 2: Assemble the Base and Side Panels

Connect the bottom panel to the side panels according to the included instruction sheet. Ensure all connections are secure. The system is designed for easy interlocking.

Step 3: Install Back Panels

Carefully slide or snap the back panels into place. *Note: Some users have reported that the back panel connections can be delicate; exercise caution to avoid breakage.*

Step 4: Attach the Top Panel

Secure the top panel to complete the main cabinet structure. Verify that all panels are firmly interlocked.

Step 5: Insert Adjustable Shelves

Place the adjustable shelves at your desired height. The cabinet is designed with multiple slots to accommodate various configurations. Ensure shelves are level and securely seated.

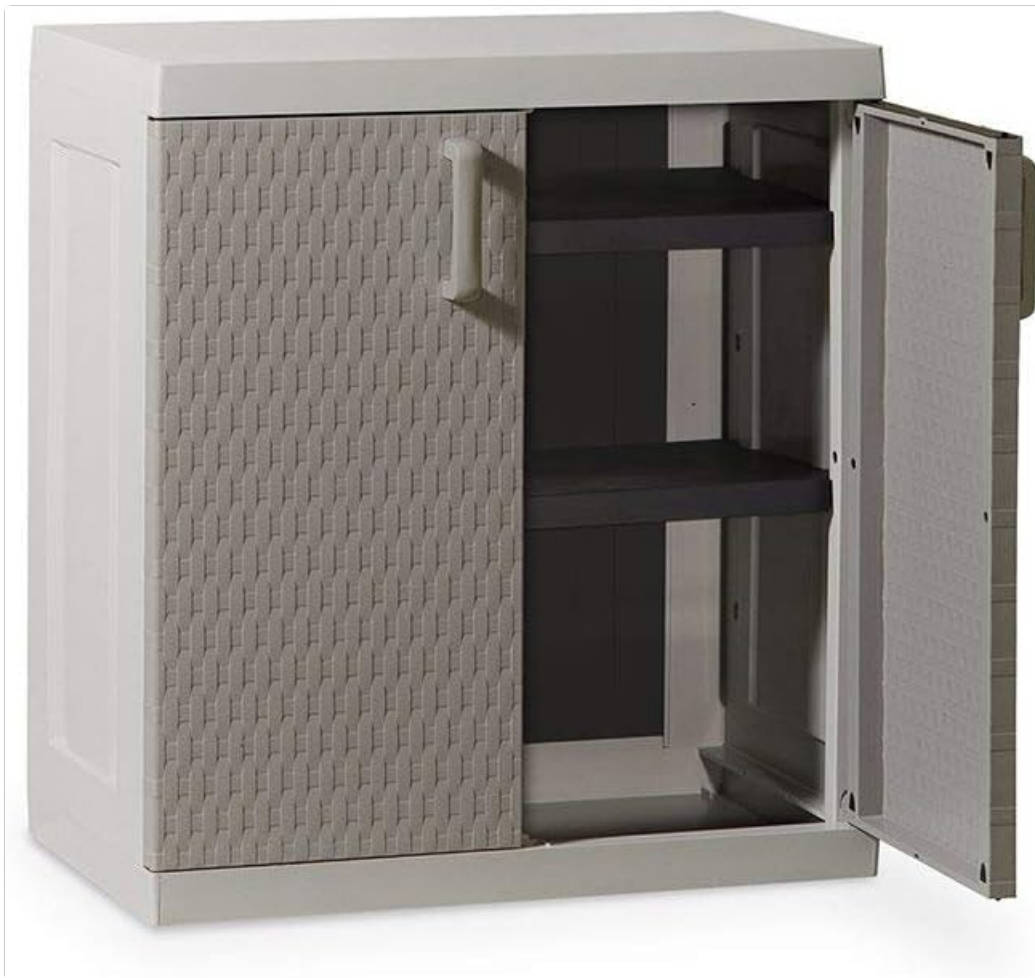


Image: Interior view of the Toomax TUTTOPIANI Basso Rattan Mega Cabinet, illustrating the adjustable shelves and internal storage space.

Step 6: Attach Doors and Handles

Mount the doors onto the cabinet hinges. Finally, attach the handles to the doors using the provided screws and a screwdriver. Test the doors to ensure they open and close smoothly.

Step 7: Final Check

Once assembled, gently shake the cabinet to ensure stability. If it wobbles, recheck all connections. Place the cabinet in its intended location, ensuring it is on a flat and stable surface.

OPERATING INSTRUCTIONS

The Toomax TUTTOPIANI Basso Rattan Mega Cabinet is designed for straightforward use.

- **Opening/Closing Doors:** Use the handles to open and close the cabinet doors. Ensure they latch securely to keep contents protected.
- **Adjusting Shelves:** The internal shelves are adjustable. To change their height, carefully remove the shelf, reposition the support pins (if applicable) or slide the shelf into a different set of grooves, and then reinsert the shelf. Ensure the shelf is level and stable before placing items on it.
- **Storage:** This cabinet is suitable for outdoor storage, clothes storage, and shoe storage. Organize items neatly on the shelves to maximize space.

MAINTENANCE

Proper maintenance will ensure the longevity and appearance of your Toomax cabinet.

- **Cleaning:** The cabinet surface is easy to clean. Use a soft cloth dampened with mild soap and water. Avoid abrasive cleaners or harsh chemicals, which can damage the rattan-effect finish.
- **Environmental Exposure:** While suitable for outdoor use, prolonged exposure to extreme weather conditions (e.g., intense direct sunlight, heavy rain, freezing temperatures) should be minimized to preserve the material's integrity and appearance.
- **Inspection:** Periodically check all connections and hinges to ensure they remain secure. Tighten any loose screws on the handles if necessary.

TROUBLESHOOTING

If you encounter any issues with your Toomax cabinet, refer to the following common solutions:

- **Cabinet is unstable/wobbly:**
 - Ensure all panels are fully interlocked and secured.
 - Verify that the cabinet is placed on a completely flat and level surface.
- **Doors do not close properly:**
 - Check that the cabinet is assembled squarely.
 - Ensure hinges are correctly installed and not obstructed.
 - Verify that the handles are securely attached.
- **Difficulty during assembly:**
 - Refer to the included instruction sheet for detailed diagrams.
 - Do not force parts together; if pieces are difficult to connect, re-evaluate the orientation.
 - If a part breaks during assembly, contact customer support for replacement.

SPECIFICATIONS

Model	TUTTOPIANI Basso Rattan Mega
Brand	Toomax
Dimensions (L x P x A)	120 cm x 45 cm x 80 cm (47.2 x 17.7 x 31.5 inches)
Weight	15 kg (33 lbs)
Material	Rattan-effect plastic
Color	Rattan (Grey/Beige tones)
Special Features	Flat panel doors, rattan construction, adjustable internal shelves
Recommended Use	Outdoor storage, clothes storage, shoe storage (suitable for balcony, terrace, garage, laundry room)

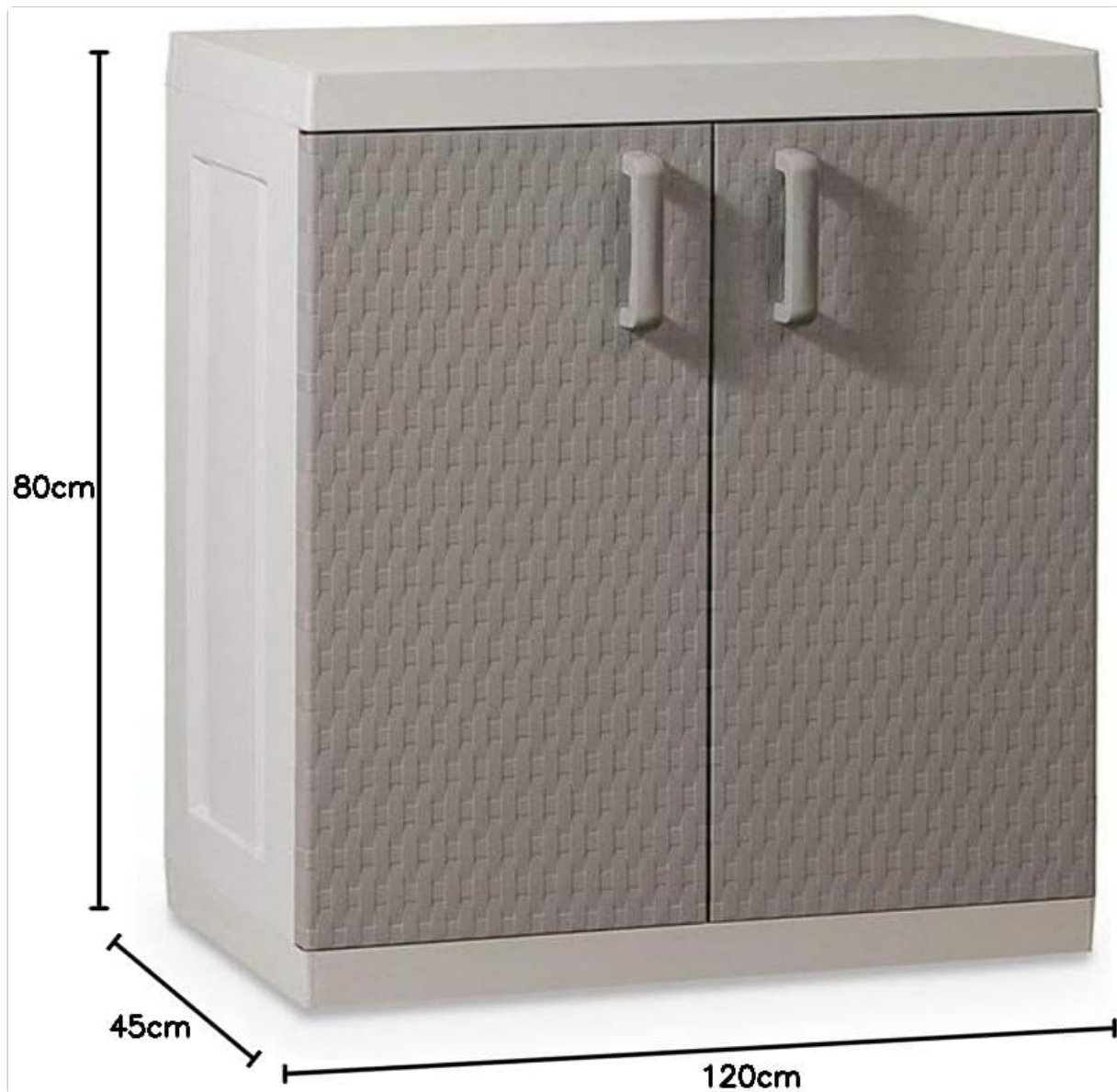


Image: Front view of the Toomax TUTTOPIANI Basso Rattan Mega Cabinet, highlighting its overall dimensions.

WARRANTY AND SUPPORT

Toomax products are manufactured to high-quality standards. For specific warranty information, please refer to the documentation included with your purchase or visit the official Toomax website. For customer support, assistance with assembly, or to report missing/damaged parts, please contact your retailer or Toomax customer service directly.

You can often find contact information on the Toomax brand store page on Amazon or through a general web search for "Toomax customer support".