

YESKAMO NK02-10802-1TB

YESKAMO Wireless CCTV Camera System User Manual

Model: NK02-10802-1TB | Brand: YESKAMO

INTRODUCTION

This manual provides detailed instructions for the installation, operation, and maintenance of your YESKAMO Wireless CCTV Camera System. Please read this manual thoroughly before using the product to ensure proper setup and functionality.



Figure 1: YESKAMO Wireless CCTV Camera System overview, showing the NVR unit, two wireless cameras, and a 1TB hard drive icon.

PACKAGE CONTENTS

Verify that all items listed below are included in your package:

- 1x 4-Channel 1080P Network Video Recorder (NVR) with pre-installed 1TB surveillance hard drive
- 2x 1080P HD WiFi IP Cameras (with 2x 3dBi antennas)
- 3x 12V UK power adapters
- 1x USB Mouse
- 1x 7dBi 3M/10ft WiFi Extension Antenna
- 1x 1M/3ft Ethernet Cable
- 1x User Manual Instruction



Figure 2: All components included in the YESKAMO Wireless CCTV Camera System package, including the NVR, two cameras, power adapters, mouse, antennas, and cables.

SETUP INSTRUCTIONS

1. **Power Connection:** Connect the NVR and each camera to a power outlet using the supplied 12V power adapters. The system is designed for plug-and-play operation.
2. **Automatic Pairing:** The cameras will automatically connect to the NVR upon power-up. No manual pairing is typically required.
3. **Monitor Connection:** Connect the NVR to a monitor via VGA or HDMI cable (not included) to view the live feed locally.
4. **Internet Connection (Optional for Remote Access):** For remote viewing via a mobile app or PC software, connect the NVR to your home router using the provided Ethernet cable. This step is not necessary for local viewing.
5. **Camera Placement:** Position the cameras in desired surveillance areas. Ensure they are within range of the NVR's wireless signal. The IP66 weatherproof rating allows for both indoor and outdoor installation.

Note: "Wireless" refers to the connection between the cameras and the NVR. All components still require a power connection via the supplied adapters.



Figure 3: Illustration of the wireless connection between the cameras and the NVR, highlighting the simplicity of setup without complex wiring.

OPERATING INSTRUCTIONS

Camera Features Overview

Each YESKAMO camera offers 3MP resolution for clear video, motion detection capabilities, and automatic day/night vision. They are designed for remote access, are IP66 weatherproof, and can send app alarms and email alerts.



Figure 4: Overview of key features for a single YESKAMO 3MP Wireless IP Camera, including resolution, motion detection, day/night vision, remote access, IP66 rating, and alert functions.

Local Viewing and Playback

Once the system is powered on and connected to a monitor, you can view live feeds directly. Use the included USB mouse to navigate the NVR's interface for settings, recording playback, and system management.

Remote Access and Alerts

To access your camera system remotely:

1. Ensure the NVR is connected to your internet router via Ethernet cable.
2. Download the YESKAMO mobile application (for iPhone/Android) or PC CMS software.
3. Follow the in-app instructions to add your NVR device.

Through the app, you can view live video, capture snapshots, record footage, and playback recorded events from anywhere with WiFi or 3G/4G network access.



Figure 5: Depiction of local and remote playback capabilities, illustrating how recorded footage can be viewed on a monitor, tablet, or smartphone.

Motion Detection and Alerts

The system features intelligent motion detection. When motion is detected, you can receive instant email alerts or push notifications to your mobile application, often accompanied by a picture snapshot of the event.

Smart Motion Detection

When there is a motion detected, you will get an phone app alert or Email with picture snapshot immediately

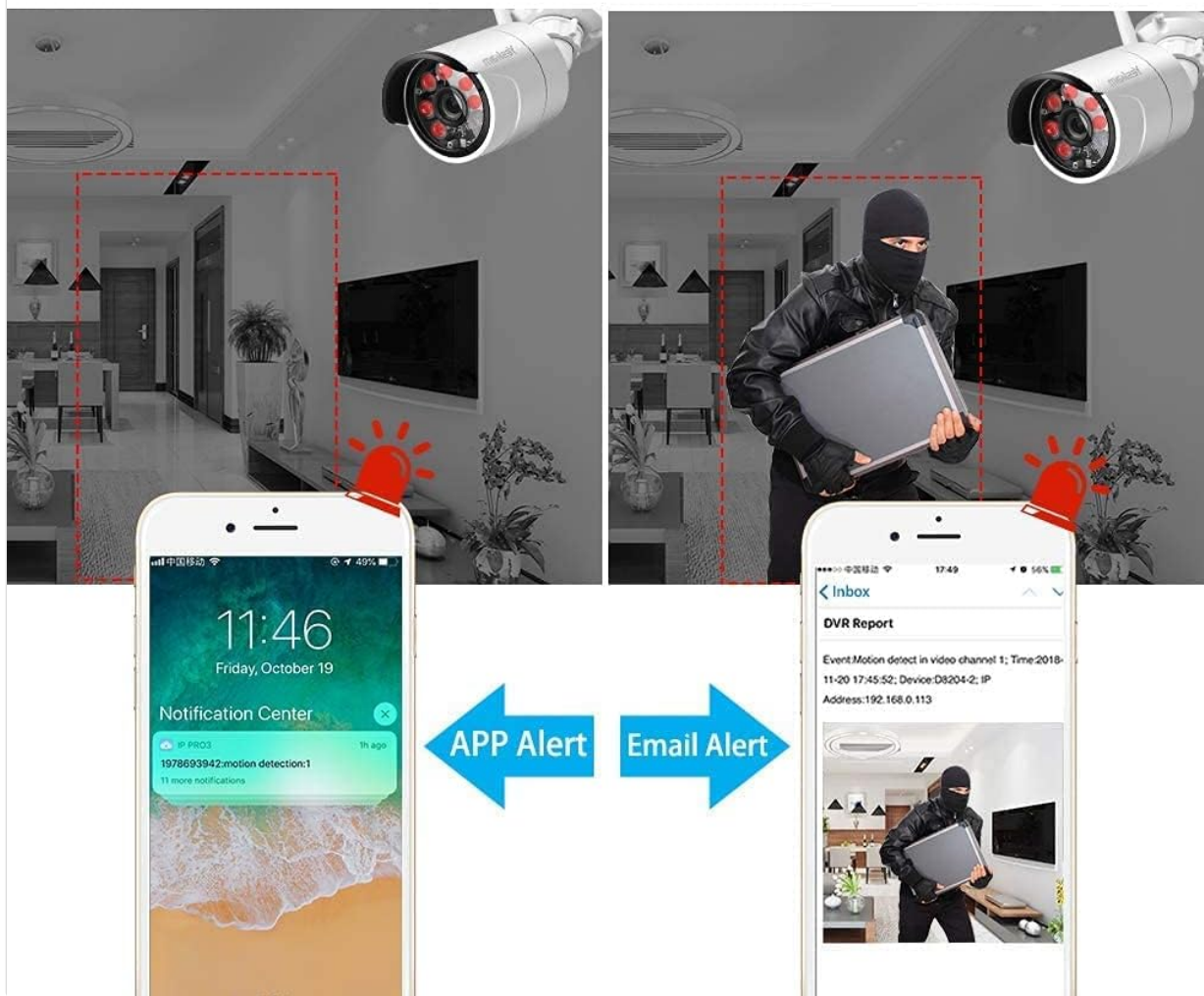


Figure 6: Example of smart motion detection triggering app and email alerts on a smartphone, showing a detected event.

Night Vision

The cameras are equipped with Infrared (IR) LED arrays and an IR-CUT function, enabling automatic switching between color day vision and black-and-white night vision. This provides clear surveillance up to 100ft (30m) in low-light conditions.

IR-CUT Switch Automatically Day and Night

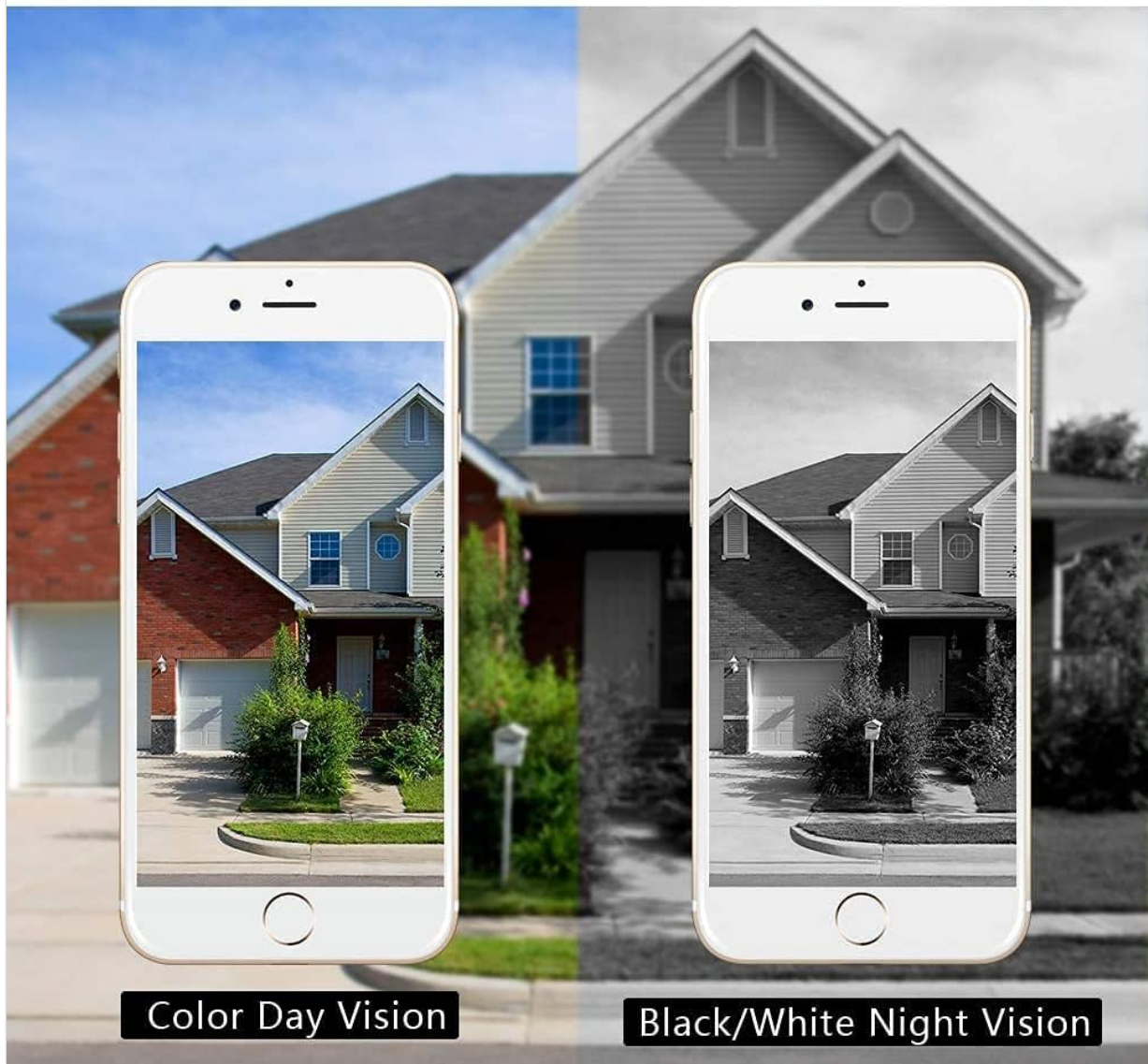


Figure 7: Visual comparison demonstrating the automatic IR-CUT switch, showing a scene in color during the day and in black and white at night.

MAINTENANCE

Hard Drive Management

The pre-installed 1TB hard drive supports 24/7 continuous recording. When the storage space is full, the system will automatically overwrite the oldest footage, ensuring continuous loop recording. The advanced H.265 compression format optimizes storage, saving at least 50% more space compared to H.264.

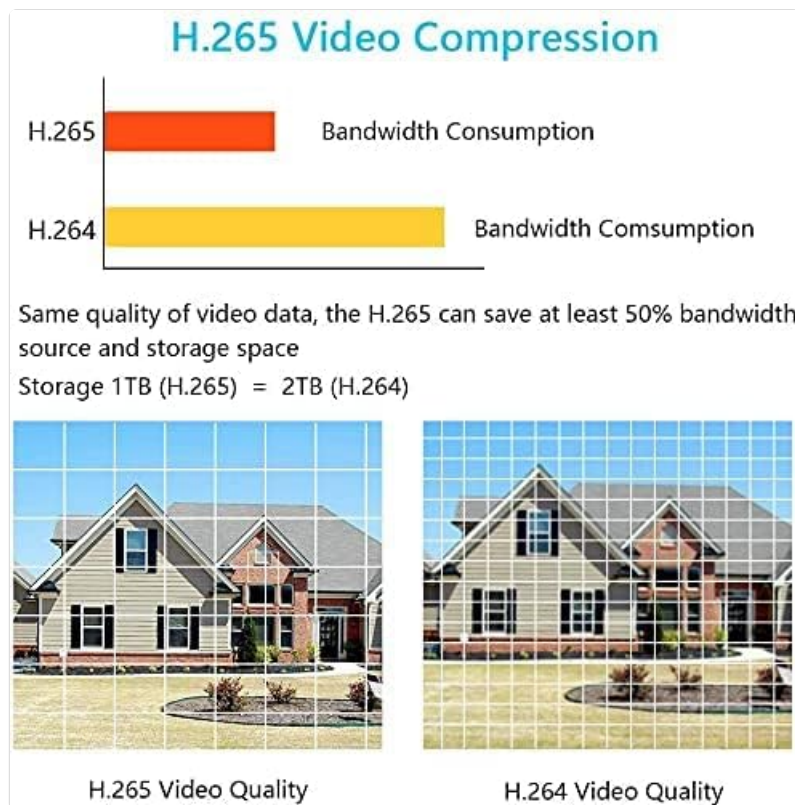


Figure 8: Chart illustrating the bandwidth and storage savings achieved with H.265 video compression compared to H.264, along with a visual quality comparison.

Environmental Durability

The cameras feature an IP66 metal waterproof housing, designed to withstand extreme weather conditions ranging from -20°C (-4°F) to 60°C (140°F). Regular cleaning of the camera lenses with a soft, dry cloth is recommended to maintain optimal image clarity.

TROUBLESHOOTING

- **No Image on Monitor:**
 - Ensure the NVR and monitor are powered on and connected correctly.
 - Verify the video input source on your monitor is set to the correct HDMI or VGA port.
- **Cameras Not Displaying:**
 - Check if cameras are powered on.
 - Ensure cameras are within wireless range of the NVR.
 - If a camera loses connection, try restarting both the camera and the NVR.
- **No Remote Access:**
 - Confirm the NVR is connected to your internet router via Ethernet cable and has an active internet connection.
 - Check your router's internet status.
 - Ensure the mobile app or PC software is updated to the latest version.
- **Motion Detection Not Triggering:**
 - Verify motion detection settings are enabled in the NVR's menu or mobile app.
 - Adjust sensitivity settings if necessary.

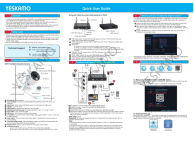
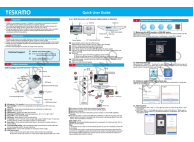
SPECIFICATIONS


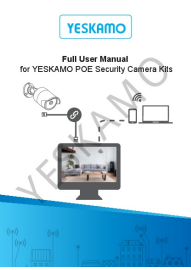
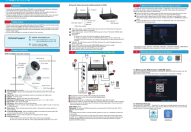
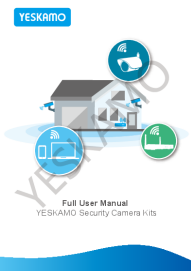
Feature	Detail
Model Number	NK02-10802-1TB
NVR Channels	8-Channel (4-Channel 1080P NVR included, expandable)
Camera Resolution	3MP (1920 x 1080)
Lens	3.6mm (90-degree wide viewing angle)
Night Vision Distance	Up to 100ft (30m)
Weatherproof Rating	IP66
Video Compression	H.265
Hard Drive	1TB Pre-installed (expandable up to 6TB)
Connectivity	Wireless (camera to NVR), Wired (NVR to router)
Operating Temperature	-20°C to 60°C (-4°F to 140°F)
Power Source	Corded Electric (12V adapters)
Item Weight	1.64 Kilograms
Product Dimensions	42 x 18.5 x 33 cm

WARRANTY AND SUPPORT

YESKAMO provides lifetime free technical support for this product. Our professional after-sale team is available to answer your questions within 24 hours. For assistance, please refer to the contact information provided in your product packaging or on the official YESKAMO website.

Related Documents - NK02-10802-1TB

	<p>YESKAMO Wifi Floodlight Security Camera Quick User Guide</p> <p>A concise guide for setting up and using the YESKAMO Wifi Floodlight Security Camera system, including NVR connection, remote viewing via mobile app, and troubleshooting tips.</p>
	<p>YESKAMO Wifi Floodlight Security Camera System Quick User Guide</p> <p>Concise guide to setting up and using the YESKAMO Wifi Floodlight Security Camera System, including NVR recorder, remote viewing, and installation instructions.</p>

	<p>YESKAMO POE Floodlight Camera User Manual</p> <p>This user manual provides detailed information on the YESKAMO POE Floodlight Camera, covering its features, installation, and operation within YESKAMO POE Security Systems.</p>
	<p>YESKAMO POE Security Camera Kits: Full User Manual</p> <p>Comprehensive user manual for YESKAMO POE Security Camera Kits, covering setup, operation, troubleshooting, and FAQs for NVR systems and cameras.</p>
	<p>YESKAMO Wifi Floodlight Security Camera System Quick Start Guide</p> <p>A quick guide to setting up and using the YESKAMO Wifi Floodlight Security Camera system, including NVR connection, remote viewing, troubleshooting, and advanced features.</p>
	<p>YESKAMO Security Camera Kits Full User Manual</p> <p>Comprehensive user manual for YESKAMO Security Camera Kits, covering installation, setup, features, and frequently asked questions for optimal system performance and security.</p>