

CAMRY 1113 and Cr 1114

CAMRY Head and Needle 1113 and Cr 1114 Phono Cartridge and Stylus Instruction Manual

Model: 1113 and Cr 1114

INTRODUCTION

This manual provides essential instructions for the proper installation, operation, and maintenance of your CAMRY Head and Needle 1113 and Cr 1114 phono cartridge and stylus. Designed for optimal audio reproduction, this product is easy to handle and features a modern design. Please read this manual thoroughly before use to ensure correct setup and to maximize the lifespan and performance of your audio component.

Key Features:

- Easy to Handle
- Modern Design
- Easy to Use

PACKAGE CONTENTS

Verify that all components are present in the package:

- 1 x CAMRY Head and Needle 1113 and Cr 1114 Phono Cartridge Assembly
- 1 x Stylus (needle)
- (Optional: Mounting hardware, if included with your specific purchase)

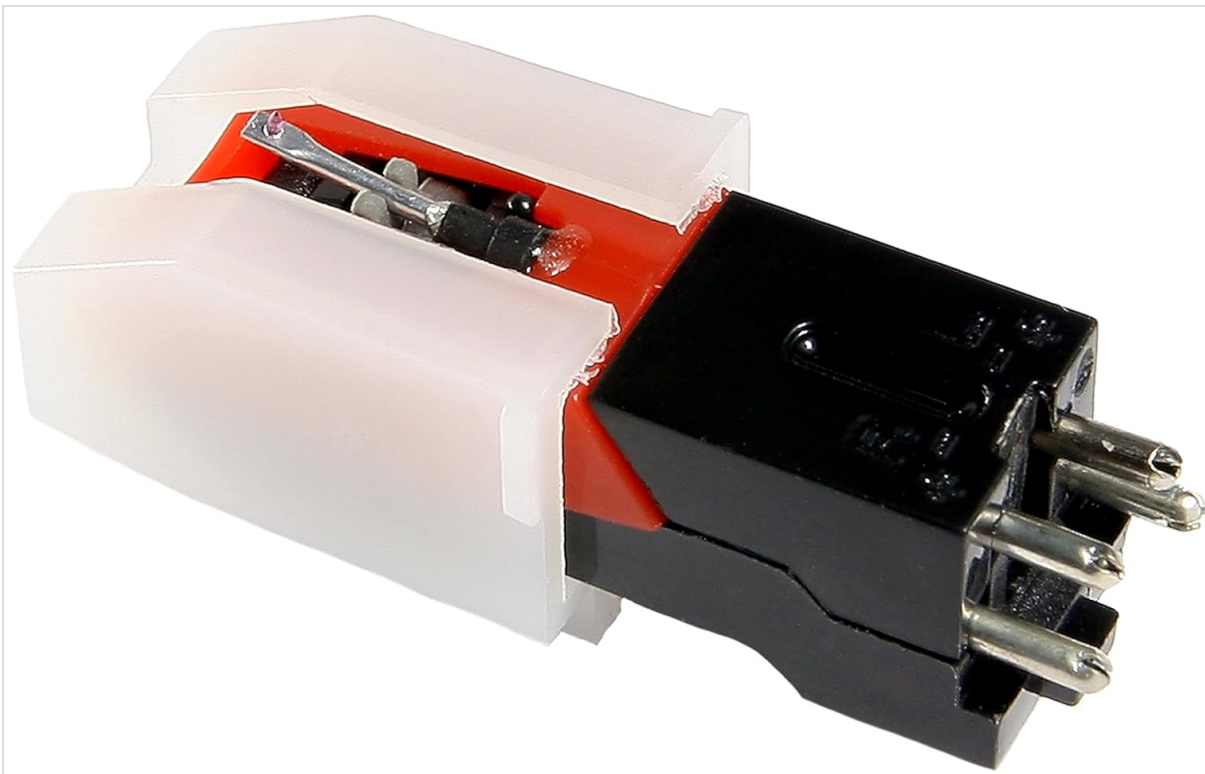


Image 1: The CAMRY Head and Needle 1113 and Cr 1114 phono cartridge assembly. This image displays the complete unit, including the cartridge body (black and red sections) and the stylus assembly (white translucent cover with the cantilever and needle visible). The four pins for electrical connection are visible at the back.

SETUP AND INSTALLATION

Proper installation is crucial for optimal sound quality and to prevent damage to your records or equipment.

1. **Power Off:** Ensure your turntable is powered off and unplugged from the mains electricity before beginning installation.
2. **Remove Old Cartridge (if applicable):** Carefully disconnect the wires from your old cartridge. Note the color coding (typically Red for Right+, Green for Right-, White for Left+, Blue for Left-). Unscrew and remove the old cartridge from the headshell.
3. **Attach New Cartridge:**
 - Align the CAMRY cartridge with the mounting holes on your turntable's headshell.
 - Secure the cartridge using the provided screws and nuts (if applicable). Do not overtighten.
4. **Connect Wires:** Connect the tonearm wires to the corresponding pins on the back of the CAMRY cartridge. Match the colors:
 - Red wire to R+ (Right Channel Positive)
 - Green wire to R- (Right Channel Ground)
 - White wire to L+ (Left Channel Positive)
 - Blue wire to L- (Left Channel Ground)

Ensure connections are firm but do not force them.

5. **Stylus Installation:** If the stylus is separate, gently slide it onto the cartridge body until it clicks securely into place. Avoid touching the needle tip.
6. **Alignment and Tracking Force:**
 - Refer to your turntable's manual for specific instructions on cartridge alignment (e.g., using a protractor) and setting the tracking force.

- The recommended tracking force for this cartridge is typically between 1.5 to 2.5 grams. Start with the manufacturer's recommended setting for your turntable or cartridge.
- Adjust anti-skate according to your turntable's instructions, usually matching the tracking force.



Image 2: A close-up view of the CAMRY stylus (needle) tip. This image highlights the delicate cantilever and the small, conical or elliptical diamond tip responsible for tracking the record grooves. Handle with extreme care.

OPERATING INSTRUCTIONS

Once installed and aligned, your CAMRY cartridge is ready for use.

1. **Clean Records:** Always ensure your records are clean and free of dust before playing to prevent damage to both the record and the stylus.
2. **Lower Tonearm Gently:** Use the tonearm lift mechanism on your turntable to gently lower the stylus onto the record's lead-in groove. Avoid dropping the tonearm manually, as this can damage the stylus or record.
3. **Playback:** Allow the record to play through.
4. **Lift Tonearm:** At the end of the record, use the tonearm lift to raise the stylus from the record surface. Return the tonearm to its rest.

Note: For optimal sound quality and to extend stylus life, avoid back-cueing or scratching with the stylus.

MAINTENANCE

Regular maintenance ensures consistent performance and extends the life of your stylus and records.

- **Stylus Cleaning:**
 - Gently clean the stylus tip before or after each play using a dedicated stylus cleaning brush. Brush from back to front (from the pivot point towards the tip) only.
 - For stubborn dirt, use a specialized stylus cleaning fluid sparingly, applied to the brush, not directly to the stylus.
 - Never use your fingers to clean the stylus.
- **Cartridge Body:** Wipe the cartridge body with a soft, dry, lint-free cloth if it becomes dusty.
- **Stylus Inspection:** Periodically inspect the stylus tip for wear or damage using a magnifying glass. A worn stylus can damage your records and degrade sound quality. Replace the stylus if it appears worn or bent.
- **Storage:** When not in use, ensure the tonearm is secured in its rest and, if available, use the stylus guard to protect the needle.

TROUBLESHOOTING

If you encounter issues, refer to the following common problems and solutions:

Problem	Possible Cause	Solution
No sound or weak sound from one channel	Loose or incorrect wire connection; damaged stylus/cartridge	Check all wire connections to the cartridge and tonearm. Ensure they are secure and correctly matched (L+/L-, R+/R-). Inspect stylus for damage.
Distorted sound or skipping	Incorrect tracking force; dirty or worn stylus; dirty record; incorrect anti-skate	Verify tracking force setting. Clean stylus. Clean record. Adjust anti-skate. Inspect stylus for wear.
Humming or buzzing noise	Grounding issue; interference; loose connections	Ensure turntable is properly grounded to your amplifier/receiver. Check all audio cable connections. Move turntable away from other electronic devices.
Stylus not tracking groove	Incorrect tracking force; damaged stylus; tonearm balance issue	Re-balance tonearm and reset tracking force. Inspect stylus for damage.

If problems persist after attempting these solutions, consult a qualified audio technician or contact CAMRY customer support.

SPECIFICATIONS

Feature	Detail
Brand	CAMRY
Model Name	1113 and Cr 1114
Item Model Number	camry_CR 1113.1
Color	Multicolour
Material	Glass (<i>Note: This likely refers to the stylus tip material, e.g., sapphire or diamond, often described as 'glass' in general terms.</i>)
Product Dimensions (L x W x H)	11.81 x 11.81 x 3.94 inches (<i>Note: This dimension seems unusually large for a cartridge and may refer to packaging. Actual cartridge dimensions are much smaller.</i>)
Item Weight	0.704 ounces (approx. 20 grams)
Manufacturer	Adler Ltd
Date First Available	October 22, 2018

WARRANTY AND SUPPORT

Specific warranty information for the CAMRY Head and Needle 1113 and Cr 1114 is not provided in this manual. Please refer to your purchase documentation or the retailer's website for details regarding warranty coverage.

For technical support, inquiries, or to report issues, please contact the retailer from whom you purchased the product or visit the official CAMRY brand website for customer service contact information.

© 2023 CAMRY. All rights reserved.

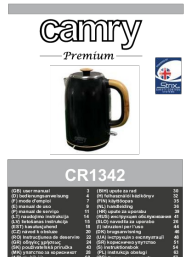
This manual is for informational purposes only. Specifications are subject to change without notice.

Related Documents - 1113 and Cr 1114



[Camry CR 1259 Electric Kettle: User Manual & Operating Guide](#)

Comprehensive user manual for the Camry CR 1259 electric water boiler. Includes safety instructions, operating guidelines, maintenance tips, and technical specifications for optimal use.



[Camry CR1342 Electric Kettle User Manual](#)

Comprehensive user manual for the Camry CR1342 electric kettle, detailing safety instructions, operating guidelines, cleaning procedures, and technical specifications.



[Camry CR 1188 Retro Radio User Manual - Features and Safety Guide](#)

This user manual provides detailed instructions and safety information for the Camry CR 1188 retro radio, featuring Bluetooth and USB connectivity. Learn how to operate your vintage-style audio device safely and effectively.



[Camry CR 2322 Hair Straightener User Manual and Safety Instructions](#)

Detailed user manual and safety instructions for the Camry CR 2322 hair straightener. Learn about safe operation, usage, cleaning, and technical specifications. Available in multiple languages.



[Camry CR 6016 Mini Oven User Manual and Safety Guide](#)

Comprehensive user manual and safety guide for the Camry CR 6016 mini oven. Includes operating instructions, maintenance tips, and safety precautions for optimal use.



[Camry CR 4414 Coffee Maker User Manual](#)

This user manual provides essential safety instructions and operating guidelines for the Camry CR 4414 coffee maker, detailing preparation, brewing, and maintenance for optimal coffee enjoyment.



[\[pdf\]](#) User Manual

katalog 2021 na 2022 indd product designations AdlerEurope SANDWICH MAKER XL SIZE Max Power 400W 1300W A fat free fryer frying with hot air Detachable power cord manual controller 4 adler pl dane Business card PRODUCT DESIGNATIONS: Best quality New product Top selling product Temperature control Diamond Diamond style Style Our daily habits have changed very much over the past few months. We spend more time at home, cook meals, prepare drinks, and snacks. We also cut and style our hai...

lang:en score:17 filesize: 8.84 M page_count: 60 document date: 2021-07-28



[\[pdf\]](#)

katalog 2018 lato indd adler en pl 80 dane

Audio Home Outdoor Kitchen Health Bathroom Beauty 1 Audio Home Outdoor Kitchen Health Bathroom Beauty Business card PRODUCT DESIGNATIONS: Best quality New product Top selling product Temperature control Free recipe book ADLER EUROPE GROUP, a company with 26 years of tradition, ...

lang:en score:10 filesize: 7.78 M page_count: 64 document date: 2018-08-22



[\[pdf\]](#)

adler pl old Index of dane katalog |||

Business card PRODUCT DESIGNATIONS: Best quality New product Top selling product Temperature control Diamond Diamond style Style Our daily habits have changed very much over the past few months. We spend more time at home, cook meals, prepare drinks, and snacks. We also cut and style our hai...

lang:en score:10 filesize: 48.84 M page_count: 59 document date: 2021-03-18



[\[pdf\]](#)

katalog 2021 zima „ lukasz w new indd adler pl spis gora Index of dane |||

Business card PRODUCT DESIGNATIONS: Best quality New product Top selling product Temperature control Diamond Diamond style Style Our daily habits have changed very much over the past few months. We spend more time at home, cook meals, prepare drinks, and snacks. We also cut and style our hai...

lang:en score:10 filesize: 10.96 M page_count: 60 document date: 2021-01-05



[Adler Europe Group 2021/2022 Product Catalog | Household Appliances & Electronics](#)

Explore the comprehensive 2021/2022 catalog from Adler Europe Group, featuring a wide range of high-quality household appliances and audio equipment from brands like Adler, Camry, Gerlach, and Mesko. Discover kettles, coffee makers, personal care devices, and more.

lang:en score:9 filesize: 18.47 M page_count: 60 document date: 2021-07-09



[\[pdf\]](#)

Untitled adler pl oldone Index of dane katalog |||

Business card PRODUCT DESIGNATIONS: Best quality New product Top selling product Temperature control Diamond Diamond style Style Strix safety control system Our daily habits have changed very much over the past few months. We spend more time at home, cook meals, prepare drinks, and snacks. ...

lang:en score:9 filesize: 8.45 M page_count: 64 document date: 2021-12-30