

## Conair 420N

# Conair Double Ceramic Travel Dryer

## MODEL 420N INSTRUCTION MANUAL

### Introduction

The Conair Double Ceramic Travel Dryer is designed for powerful and convenient styling, whether at home or while traveling. It incorporates smart voltage technology for automatic voltage adjustment, a compact folding handle for easy storage, and ionic conditioning to reduce frizz and enhance hair's natural shine. This 1875-watt dryer offers versatile styling options with multiple heat and speed settings.

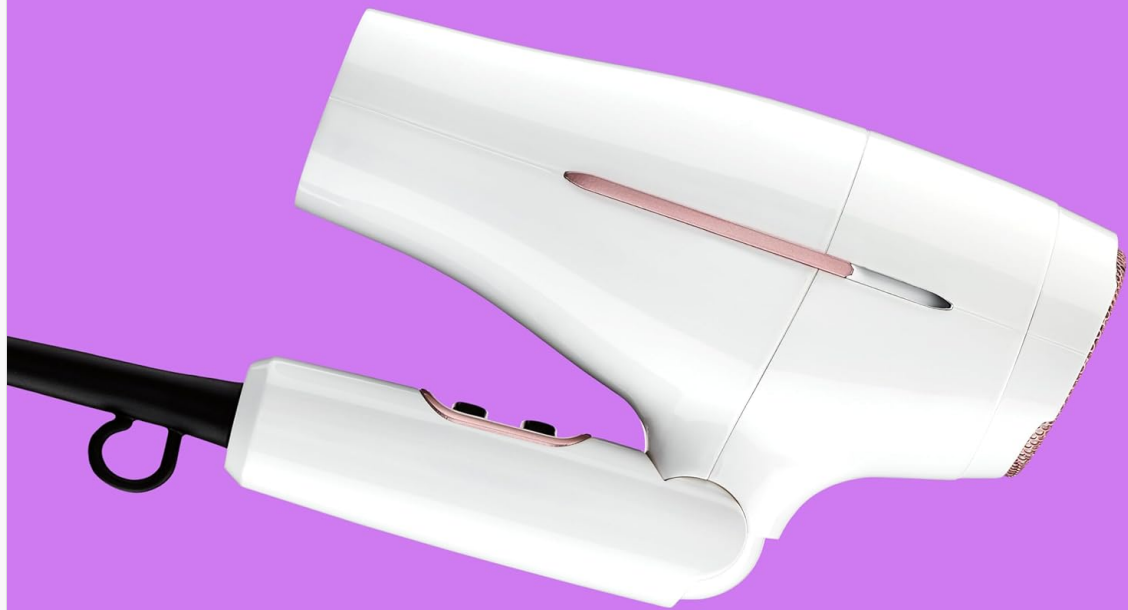
- **Smart Voltage Technology:** Automatically detects and adjusts to foreign voltage while maintaining full heat and speed settings.
- **Folding Handle:** Designed for compact storage and travel ease.
- **1875 Watts:** Provides powerful airflow for efficient drying.
- **Ionic Conditioning:** Helps to reduce frizz and promote smooth, shiny hair.
- **3 Heat / 2 Speed Settings:** Customizable options for various hair types and styles.
- **Cool Shot Button:** Locks in styles for a lasting finish.
- **Concentrator Attachment:** Directs airflow for precise styling.



Figure 1: Conair Double Ceramic Travel Dryer with concentrator attached.

## Setup

1. **Unpacking:** Carefully remove the dryer and all accessories from the packaging. Ensure all components are present and undamaged.
2. **Unfolding the Handle:** To prepare the dryer for use, gently pull the handle away from the dryer body until it clicks securely into place. To fold for storage, push the handle towards the dryer body until it locks.



Folding Handle  
for storage and  
travel ease.

Figure 2: The folding handle allows for compact storage and travel.

Your browser does not support the video tag.

Video 1: Demonstration of the folding handle for compact storage.

3. **Attaching the Concentrator:** Align the concentrator nozzle with the front of the dryer and push it firmly into place. Ensure it is securely attached before use. The concentrator helps to direct airflow for precise styling.



Figure 3: The concentrator attachment for focused airflow and smooth styles.

4. **Power Connection:** Plug the dryer into an appropriate electrical outlet. The smart voltage technology will automatically detect and adapt to the local voltage (125V or 240V). An adapter may be necessary for international outlets, but a voltage converter is not required.

## Operating Instructions

---

Familiarize yourself with the controls for optimal styling results.



Figure 4: Key features and controls of the Conair Double Ceramic Travel Dryer.

1. **Power On/Off:** Use the rocker switch located on the handle to turn the dryer ON or OFF.
2. **Heat Settings:** Select your desired heat level using the heat switch. Options typically include:
  - **Hot:** For fast drying and styling.
  - **Warm:** For normal drying.
  - **Cool:** For gentle drying or setting styles.
3. **Speed Settings:** Adjust the airflow speed with the speed switch. Options typically include:
  - **High:** For quick drying.
  - **Low:** For precise styling or gentle drying.
4. **Cool Shot Button:** Press and hold the cool shot button to deliver a burst of cool air. This helps to set your hairstyle and add shine. Release the button to return to the selected heat setting.
5. **Smart Voltage Technology:** This dryer automatically detects the voltage of the outlet (125V or 240V) and adjusts its operation accordingly. No manual switching is required.



Smart Voltage adapts globally with full power.



Figure 5: Smart Voltage Technology adapts globally with full power.

6. **Ionic Conditioning:** The dryer emits natural ions to help reduce frizz and enhance your hair's natural shine during drying.

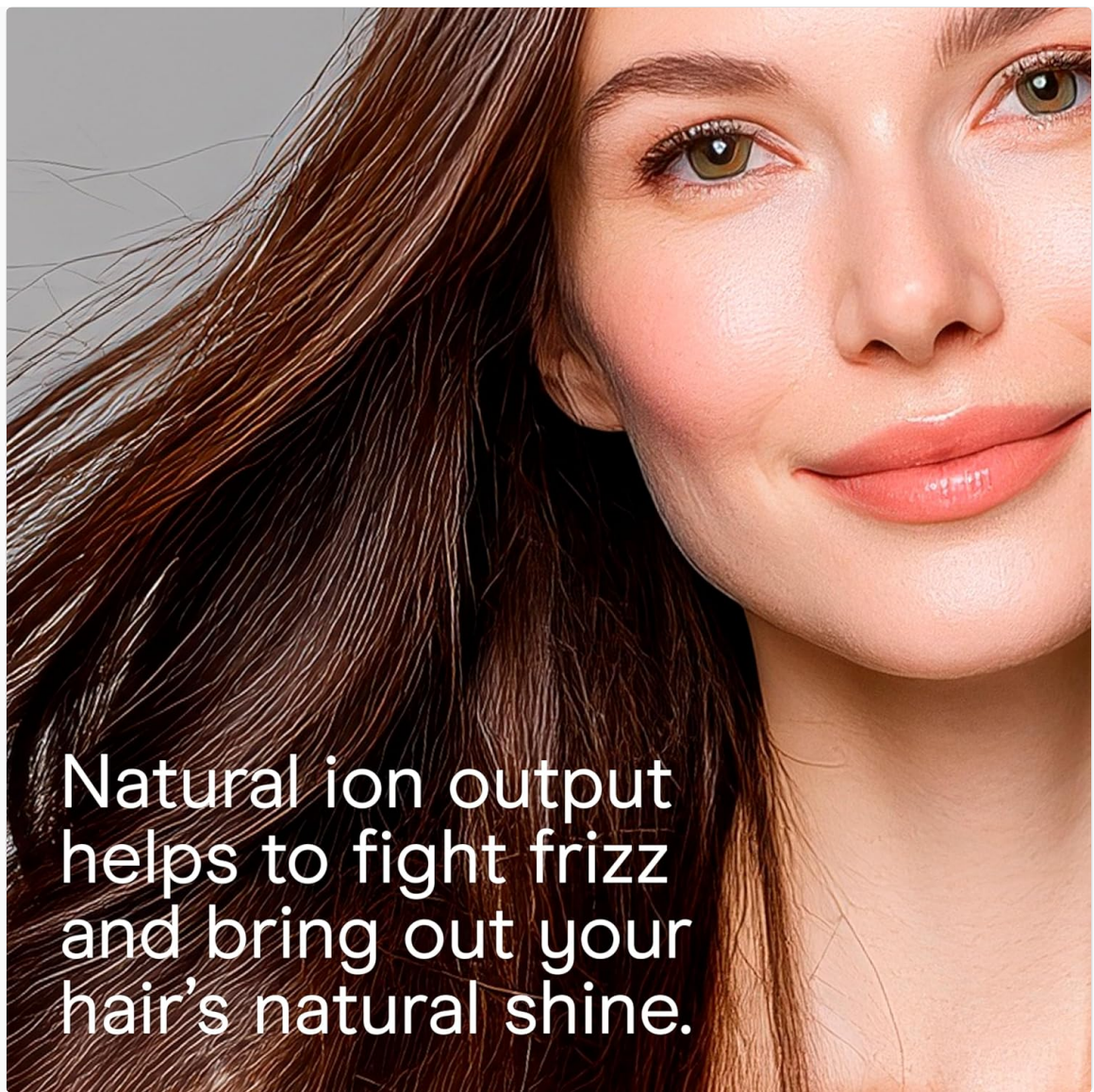


Figure 6: Natural ion output helps to fight frizz and bring out your hair's natural shine.

## Maintenance

---

Regular maintenance ensures optimal performance and extends the life of your dryer.

- **Cleaning the Lint Filter:** To prevent lint buildup and extend motor life, regularly remove and clean the lint filter. Ensure the dryer is unplugged before cleaning. Gently twist or pull off the rear filter cover, remove any accumulated lint or hair, and replace the cover securely.

## Troubleshooting

---

If your dryer is not functioning as expected, please check the following:

- **No Power:** Ensure the dryer is securely plugged into a working electrical outlet. Check if the outlet is receiving power by testing it with another appliance.
- **Overheating:** If the dryer stops during use, it may have overheated. Unplug it and allow it to cool down for several minutes. Check the air intake filter for any blockages and clean it if necessary.
- **Weak Airflow:** A clogged air intake filter can restrict airflow. Refer to the Maintenance section for instructions on cleaning the filter.

## Specifications

---

Feature	Detail
Model Number	420N
Wattage	1875 watts
Power Source	Corded Electric
Material	Plastic
Product Dimensions	6.13 x 3.63 x 10.38 inches
Item Weight	1.32 Pounds
Special Features	Smart Voltage, Folding Handle, Ionic Conditioning, Concentrator

## Safety Information

Please read and follow all safety instructions provided in the full product manual to prevent injury or damage to the appliance.

- Always unplug the appliance immediately after use.
- Do not use while bathing or in a shower.
- Do not place or store appliance where it can fall or be pulled into a tub or sink.
- Do not place in or drop into water or other liquid.
- If an appliance falls into water, unplug it immediately. Do not reach into the water.
- Keep away from water.

## Warranty and Support

For warranty information, product support, or to inquire about replacement parts, please refer to the warranty card included with your purchase or contact Conair customer service directly. Keep your purchase receipt as proof of purchase for any warranty claims.