



[Manuals.plus](#) /

› [Georgia-Pacific](#) /

› GP PRO Compact 4-Roll Quad Coreless High-Capacity Toilet Paper Dispenser User Manual

Georgia-Pacific 56746A

Instruction Manual for GP PRO Compact 4-Roll Quad Coreless High-Capacity Toilet Paper Dispenser

Model: 56746A | Brand: Georgia-Pacific

1. PRODUCT OVERVIEW

The GP PRO Compact 4-Roll Quad Coreless High-Capacity Toilet Paper Dispenser is designed for efficiency and hygiene in commercial restrooms. This system helps reduce maintenance time and minimizes waste by utilizing coreless toilet paper rolls, ensuring nearly 100% usage. Its durable construction and locked system protect unused rolls, contributing to a more hygienic environment.

What's in the Box:

- 1 x Compact 4-Roll Quad Coreless High-Capacity Toilet Paper Dispenser
- 1 x Dispenser Access Key
- Instruction Manual (this document)

Note: Optional mounting brackets and screws are not included and must be purchased separately.



Includes 1 dispenser & key kit;
optional mounting brackets & screws not included

Image: The dispenser shown with its packaging, highlighting its easy installation.

2. INSTALLATION

Installation of the dispenser is straightforward and can be completed in a few minutes. The dispenser can be installed either by direct mount or by using a mounting bracket (sold separately).

Important Considerations:

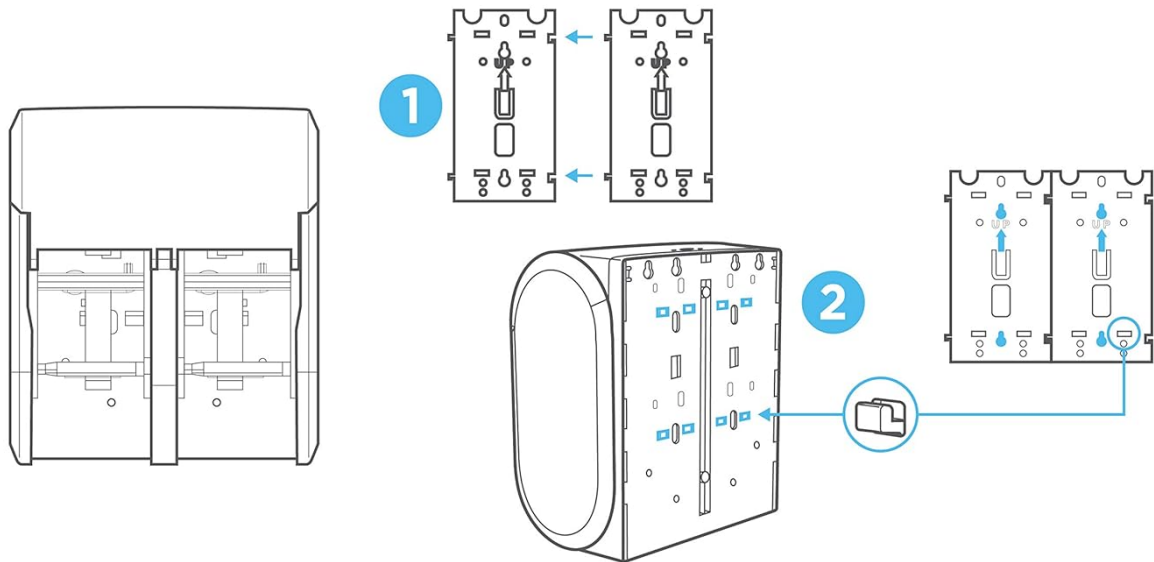
- Ensure adequate clearance for loading. The top of the dispenser should be at least 3.25 inches below any grab bar or other object for direct mount, and 4.5 inches for bracket mount.
- Use appropriate screws and anchors for your wall type to ensure secure mounting.

Installation Steps:

1. **Open the Dispenser:** Use the provided access key to open the dispenser cover.
2. **Position and Mark:** Position the dispenser on the wall, ensuring it is level. With the front cover open, mark the screw locations as indicated on the dispenser's backplate.
3. **Secure Dispenser (Direct Mount):** Secure the unit to the wall using four screws and appropriate anchors.

- 4. Assemble and Secure Bracket (Bracket Mount - if applicable):** If using mounting brackets (e.g., #54019, sold separately), assemble them by connecting the sides. Ensure the assembled bracket is level and the arrows point up. Secure the bracket to the wall with four screws and appropriate anchors.
- 5. Mount Dispenser to Bracket:** Fit the dispenser onto the secured bracket, engaging the clips. Gently pull down until it clicks into place, ensuring it is locked securely.

Installation Made Easy*



- 1 Affix 2 mounting brackets** (#54019 sold separately) by connecting the sides as shown.
- 2 Secure assembled bracket to wall** with four anchored screws using the keyhole slots indicated. Fit dispenser on bracket engaging all clips as indicated.

*See online installation instruction files for detailed information.

Image: Visual guide for dispenser installation, showing mounting bracket assembly and attachment to the wall.

Installation Video:

Your browser does not support the video tag.

Video: A detailed guide on how to install the Compact Toilet Paper Dispenser, covering both direct mount and bracket mount methods.

3. SETUP (LOADING TOILET PAPER)

The Compact 4-Roll Quad Coreless dispenser is designed for easy loading and high capacity, reducing the frequency of refills.

- 1. Open Dispenser:** Use the access key to open the front cover of the dispenser.

2. **Remove Roll Transfer Sled:** For the 2-roll vertical dispenser, remove the roll transfer sled by pulling straight up. For the 4-roll quad dispenser, there are two sleds.
3. **Load Tissue Rolls:** Rotate the arm on the roll transfer sled. Insert the coreless tissue rolls onto the sled, ensuring the tissue dispenses from the top. Return the arm to its original position.
4. **Reinsert Sled:** Align the roll transfer sled with the side rails and reinsert it into the dispenser.
5. **Repeat for Quad Dispenser:** For the 4-roll quad vertical dispenser, repeat these steps for the roll transfer sled on the second side.
6. **Close Dispenser:** Close the front cover and lock it with the access key.



Image: A coreless toilet paper roll, demonstrating its design for nearly 100% usage and reduced waste.



Compact® 2-Roll Side-by-Side Coreless High-Capacity Toilet Paper Dispenser pictured here.



compact.

Image: A person demonstrating the easy maintenance and loading process of the Compact 2-Roll Side-by-Side Coreless High-Capacity Toilet Paper Dispenser.

4. OPERATION

The dispenser is designed for continuous operation, ensuring toilet paper is always available.

- The primary roll is dispensed first.
- Once the primary roll is depleted, the dispenser automatically allows access to the next roll, ensuring uninterrupted service.
- The locked system protects unused rolls from contamination and theft until they are needed.



compact.



High Capacity

Compact® 4-Roll Quad Coreless
High-Capacity Toilet Paper Dispenser pictured here.

Image: The Compact 4-Roll Quad Coreless High-Capacity Toilet Paper Dispenser, illustrating its high capacity design.



Compact® 2-Roll Side-by-Side Coreless High-Capacity Toilet Paper Dispenser pictured here.

Image: The Compact 2-Roll Side-by-Side Coreless High-Capacity Toilet Paper Dispenser, demonstrating its hygienic locked system that protects unused rolls.

5. MAINTENANCE

Regular maintenance ensures the longevity and optimal performance of your dispenser.

- **Cleaning:** Wipe the exterior surfaces with a soft, damp cloth and mild soap. Avoid abrasive cleaners or solvents that could damage the finish.
- **Inspection:** Periodically inspect the dispenser for any signs of wear or damage. Ensure all moving parts operate smoothly.
- **Refill Management:** Monitor toilet paper levels regularly to prevent run-outs, especially in high-traffic areas.

6. TROUBLESHOOTING

If you encounter any issues with your dispenser, refer to the following common solutions:

Problem	Possible Cause	Solution
---------	----------------	----------

Problem	Possible Cause	Solution
Rolls not dispensing smoothly	Improper loading of rolls or debris in the mechanism.	Ensure rolls are loaded correctly with tissue dispensing from the top. Check for and remove any obstructions.
Dispenser cover not closing/locking	Obstruction or misalignment.	Check for any objects blocking the cover. Ensure the dispenser is properly mounted and aligned.
Second roll not accessible after first is depleted	Roll transfer sled not properly seated.	Open the dispenser and ensure the roll transfer sleds are correctly aligned and seated in their channels.

7. SPECIFICATIONS

Specification	Detail
Product Dimensions	12.06 x 8 x 14.44 inches
Item Weight	4.09 Pounds
Item Model Number	56746A
Brand	Georgia-Pacific
Material	Plastic
Finish Type	Varnished (Faux Stainless)
Color	Stainless Finish
Installation Type	Free Standing (Can be wall-mounted with appropriate hardware)
Compatible Refills	Compact toilet paper refills 19371, 19372, 1937300, 19374, 19375 and 19378



Image: Detailed dimensions of the dispenser (Height: 13.25", Width: 11.75", Depth: 6.9").

Compatible Compact® Toilet Paper Dispensers and Refills (Sold Separately)



56784A



Angel Soft Professional Series® Compact® Premium Embossed Coreless 2-Ply Toilet Paper

19371 36 Refills

19372 18 Refills

1937300 12 Refills



56790A



Compact® Coreless 2-Ply Recycled Toilet Paper

19375 36 Refills

19378 18 Refills



56744A



Compact® Coreless 1-Ply Recycled Toilet Paper

19374 18 Refills

Image: Overview of compatible Compact toilet paper dispensers and various refill options.

8. WARRANTY

This GP PRO Compact Toilet Paper Dispenser is backed by a 10-year warranty, ensuring long-term reliability and peace of mind.

9. SUPPORT

For additional support, questions, or to access the full user guide, please refer to the following resources:

- **Official User Guide (PDF):** [Download PDF](#)
- **Contact GP PRO:** Refer to the contact information provided inside the dispenser or on the official GP PRO website.

Smart Choices Help You Step Up Sustainability



Compact® Coreless Toilet Paper Refills are USDA Certified Biobased¹



Some Compact® Coreless Toilet Paper Refills are UL ECOLOGO Certified²



Compact® Coreless Toilet Paper Refills meet SFI® certification standards³



Compact® Coreless Toilet Paper Refills are EPA Compliant for Recycled Fiber Content⁴



Compact® Coreless Toilet Paper Refills and Dispensers can help minimize waste⁵



Compact® Coreless Toilet Paper Refills are an Elements choice product⁶

1 Biobased products are derived from plants and other renewable agricultural, marine, and forestry materials and provide an alternative to conventional petroleum derived products. biopreferred.gov

2 UL ECOLOGO Certified for reduced environmental impact. View specific attributes evaluated at UL.COM/EL UL 175.

3 Meets Sustainable Forestry Initiative (SFI®) certification standards. SFI is a registered trademark owned by Sustainable Forestry Initiative, Inc. www.sfiprogram.org.

4 Contains at least 20% Post-Consumer Recycled Fiber. Meets or Exceeds EPA Comprehensive Procurement Guidelines.

5 Compact® toilet paper can help reduce landfill waste by having no cores, no inner wrappings and no stub rolls.

6 Elements™ is a GP PRO sustainability platform that identifies our top-choice sustainably focused products.

Image: Contact details for Georgia-Pacific Professional support, including phone number and website.