

Kärcher 1.512-457.0

Kärcher SC4 Easy-Fix Steam Cleaner User Manual

Model: 1.512-457.0 | Brand: Kärcher

INTRODUCTION

The Kärcher SC4 Easy-Fix Canister Steam Cleaner is a powerful and versatile appliance designed for deep cleaning various household surfaces using only steam. With its 2000-watt motor and 3.5 bar pressure, it effectively tackles dirt, grime, and stains without the need for harsh chemicals. This manual provides essential information for safe and efficient operation, setup, maintenance, and troubleshooting.



Figure 1: Kärcher SC4 Easy-Fix Steam Cleaner. This image displays the main unit of the steam cleaner, featuring its distinctive yellow and grey design, along with the attached floor nozzle and handle.

SETUP

Before first use, ensure all components are present and undamaged. The SC4 Easy-Fix features a twin-tank system for continuous steam, allowing for uninterrupted cleaning sessions. This design is a significant time-saver as it allows refilling the water tank during operation.

1. **Unpack Components:** Carefully remove the steam cleaner and all accessories from the packaging.
2. **Assemble Floor Nozzle:** Attach the extension tubes to the hand gun, then connect the Easy-Fix floor nozzle to the extension tubes.
3. **Fill Water Tank:** Remove the removable fresh water tank and fill it with tap water. Reinsert the tank into the unit.
4. **Connect Power:** Plug the power cord into a suitable electrical outlet (100V).
5. **Power On:** Switch on the appliance. The heating indicator light will illuminate. Wait for the light to turn off, indicating the operating pressure has been reached.

スチームクリーナー

SC 4 Easy Fix

連続
強力
スチーム

連続使用可能



給水で連続使用

強力スチーム

頑固な汚れに

洗剤不要

99.99%*

除菌



手早く簡単に
クロスを着脱



手を汚さずに
取り外し



連続使用可能

Figure 2: Continuous Use Feature. This image highlights the continuous use capability of the SC4 Easy-Fix, showing the steam cleaner with an icon indicating its ability to be refilled during operation for extended cleaning.

OPERATING INSTRUCTIONS

The Kärcher SC4 Easy-Fix is designed for effective cleaning across a variety of surfaces. Always test steam on an inconspicuous area first, especially on delicate materials.

General Operation

- **Steam Control:** Use the adjustable steam control on the hand gun to select the appropriate steam intensity for the cleaning task. Higher intensity for stubborn dirt, lower for delicate surfaces.
- **Safety Lock:** The steam gun features a safety lock to prevent accidental steam release. Engage the lock when not actively steaming.

Cleaning Specific Surfaces

- **Hard Floors:** Attach the Easy-Fix floor nozzle with a microfiber cloth. Move the nozzle slowly over the floor for optimal cleaning.
- **Tiles and Grout:** Use the hand nozzle with a small brush attachment for concentrated steam on stubborn areas.
- **Kitchen Surfaces:** The hand nozzle is ideal for cleaning stovetops, range hoods, and sinks. For greasy stains, apply steam directly and wipe with a cloth.
- **Upholstery and Fabrics:** Use the hand nozzle with a terry cloth cover. Hold the nozzle slightly away from the fabric and steam gently. Do not oversaturate.

- **Windows and Mirrors:** Use the window nozzle (if included) or the hand nozzle with a clean cloth. Wipe dry immediately after steaming to prevent streaks.

ケルヒャー スチームで 家の中のすみすみまでお掃除!



Figure 3: Versatile Cleaning Applications. This diagram illustrates the wide range of uses for the Kärcher SC4 Easy-Fix, demonstrating its effectiveness in cleaning various areas such as bathrooms, kitchens, and living spaces, including floors, tiles, and fixtures.

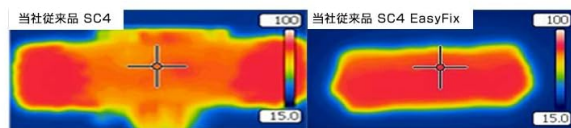
洗剤なしで汚れ落ち抜群

気になるベタベタ床もスッカリ



ベタベタが気になるフローリングもスッカリきれいに。子供やペットに優しいお掃除方法です。

拭きムラ、拭き残りナシ



標準装備の「イーजीフィックスフロアノズル」は接地面全体に高温状態が保たれ、効果的に洗浄できます。

抜群の操作性



ノズルジョイントが自在に動くので、家具やベッドの下も楽にお掃除可能。ノズル面も常に水平をキープしぴったり床に接地。

クロス交換が簡単



クロス交換も簡単。汚れたクロスはタグを持って剥がして、綺麗なクロス面を貼るだけの面ファスナーを採用。

Figure 4: Cleaning Effectiveness. This image showcases the cleaning power of the steam cleaner with before-and-after comparisons for sticky floors, mold removal, and greasy kitchen surfaces, demonstrating its ability to achieve thorough cleanliness.

ケース1
ベタベタ床
床のベタつき
さらっと快適に!

水だけで、床のベタつきがさらっとキレイに

床のベタつきがきになる度に家中の雑巾掛けは大変。スチームクリーナーなら高温の蒸気でサッと拭き取るだけで、ベタついた床もサラッとスツクリ。



清掃前



清掃後

ケース2
防カビ・除菌
じめっとした季節に

**99.99%
除菌***

**除菌力抜群!
一回の掃除でキレイが長続き**

「水まわりを効率的に掃除したい!」スチームクリーナーはそんな方にオススメ。水だけで除菌ができるから、赤ちゃんやペットのいるご家庭でも。



清掃前



清掃後

<第三者機関のテスト結果>
ケルヒャーのスチームクリーナーを正しく使用すると、一般家庭のバクテリアを99.99%除去することができます(表面の硬い場所を正装した場合)。

ケース3
キッチンの油污れ
しつこい油污れも
簡単スツクリ!

**洗剤なしでも、
しつこい油污れを簡単除去!**

高温スチームの力でレンジフードやコンロにこびりついた汚れをゆるませて取り除きます。大変だったお掃除をスチームクリーナーで簡単に!



清掃前



清掃後

Figure 5: Cleaning a Window Frame. This image shows the steam cleaner being used to effectively clean a window frame, highlighting its precision and ability to reach tight spaces.

標準装備品

			
イージーフィックスフロアノズル 品番:4.130-035.0	ハンドブラシ 品番:2.884-280.0	ハンドブラシ 品番:2.863-022.0	ノズルヘッド 品番:4.130-021.0
			
イージーフィックスフロアノズル用 マイクロファイバークロス 品番:2.863-296.0	イージーフィックスハンドブラシ用 マイクロファイバーカバー 品番:2.863-270.0	ハンドブラシ用カバー 品番:2.863-243.0	
			
ブラシ(黒・黄) 品番:2.863-282.0	パイプ×2本 品番:4.127-024.0 (この注文品番は1本です)	真ちゅうブラシ	ボイラー洗浄剤 パウダータイプ3包入り 品番:6.295-982.0

Figure 6: Cleaning a Car Seat. This image demonstrates the use of the steam cleaner for cleaning a child's car seat, illustrating its application for upholstery and fabric surfaces.

MAINTENANCE

Regular maintenance ensures the longevity and optimal performance of your Kärcher SC4 Easy-Fix steam cleaner.

- **Empty Water Tank:** After each use, empty any remaining water from the fresh water tank.
- **Clean Accessories:** Rinse all nozzles, brushes, and microfiber cloths after use. Machine wash microfiber cloths as per their care instructions.
- **Descaling:** Depending on water hardness and frequency of use, the boiler may require descaling. Use Kärcher descaling agents or a suitable alternative as per the product instructions.
- **Storage:** Store the steam cleaner and its accessories in a dry, frost-free location. The unit is designed for compact storage of its power cord, pipes, and nozzles.

コード・アクセサリをスッキリまとめられる気遣い設計

電源コード、パイプやノズル、ブラシなどをまとめることができるので、スッキリ収納することができます。



連続使用OK!

SC 4 EasyFixは、連続使用タイプのスチームクリーナーです。給水タンクが取り外し可能なので、水がなくなってもすぐに給水することができます。(定格使用時間：2時間)



Figure 7: Accessory Storage. This image demonstrates the thoughtful design of the steam cleaner, allowing for neat storage of its power cord, pipes, and various nozzles directly on the unit, promoting tidiness and ease of access.



Figure 8: Standard Accessories. This image displays the range of standard accessories included with the Kärcher SC4 Easy-Fix, such as the Easy-Fix floor nozzle, hand brush, round brush, and various microfiber cloths, each designed for specific cleaning tasks.

TROUBLESHOOTING

If you encounter issues with your Kärcher SC4 Easy-Fix, refer to the following common problems and solutions:

- **No Steam/Low Steam:**
 - Check if the unit is properly plugged in and powered on.
 - Ensure the water tank is filled.
 - Allow sufficient time for the unit to heat up (heating indicator light off).
 - Check for blockages in nozzles or hoses.
- **Water Leaking:**
 - Ensure all attachments are securely connected.
 - Check for damaged seals or O-rings.
- **Unit Not Turning On:**
 - Verify the power cord is fully inserted into both the unit and the wall outlet.
 - Check the circuit breaker.
- **Excessive Noise:**
 - Some noise during heating and operation is normal. If noise is excessive or unusual, contact customer support.

For persistent issues not covered here, please contact Kärcher customer support.

SPECIFICATIONS

Feature	Value
Model Name	SC4 Easy-Fix
Item Model Number	1.512-457.0
Power Source	Corded Electric
Voltage	100V
Item Weight	4.1 Kilograms (9.02 pounds)
Item Display Dimensions (L x W x H)	14.96 x 9.88 x 10.75 inches
Surface Recommendation	General Household Surfaces
Included Components	Canister
Color	Yellow
Style	Modern

For further assistance, please visit the official Kärcher website or contact their customer support.