

## SHENGLE ACC-003

# SHENGLE ACC-003 Accelerator Foot Pedal Electric Switch Instruction Manual

Model: ACC-003 | Brand: SHENGLE

## 1. INTRODUCTION

This document provides comprehensive instructions for the installation, operation, and maintenance of the SHENGLE ACC-003 Accelerator Foot Pedal Electric Switch. This product is designed as a replacement part for specific children's ride-on toys. It features a 2-pin socket for connection and is intended to restore accelerator functionality to compatible vehicles.

## 2. SAFETY INFORMATION

- Always ensure the ride-on car's power is disconnected before attempting any installation or maintenance.
- This product is intended for use by adults for installation and replacement.
- Verify that the replacement part has the exact same appearance and connector type as the original part to ensure compatibility and safe operation.
- Keep small parts away from children to prevent choking hazards.
- If you are unsure about any step, consult a qualified technician or the ride-on car's original manual.

## 3. PACKAGE CONTENTS

- 1 x SHENGLE ACC-003 Accelerator Foot Pedal Electric Switch (with 2-pin socket)

## 4. INSTALLATION AND SETUP

### 4.1 Identifying the Part

The SHENGLE ACC-003 is a black plastic foot pedal with a textured surface for grip. It integrates an electric switch mechanism underneath, connecting via a 2-pin socket. Before installation, compare the new pedal with your original part to confirm visual and connector compatibility.



Figure 1: Top view of the SHENGLE ACC-003 Accelerator Foot Pedal, showing the textured surface.

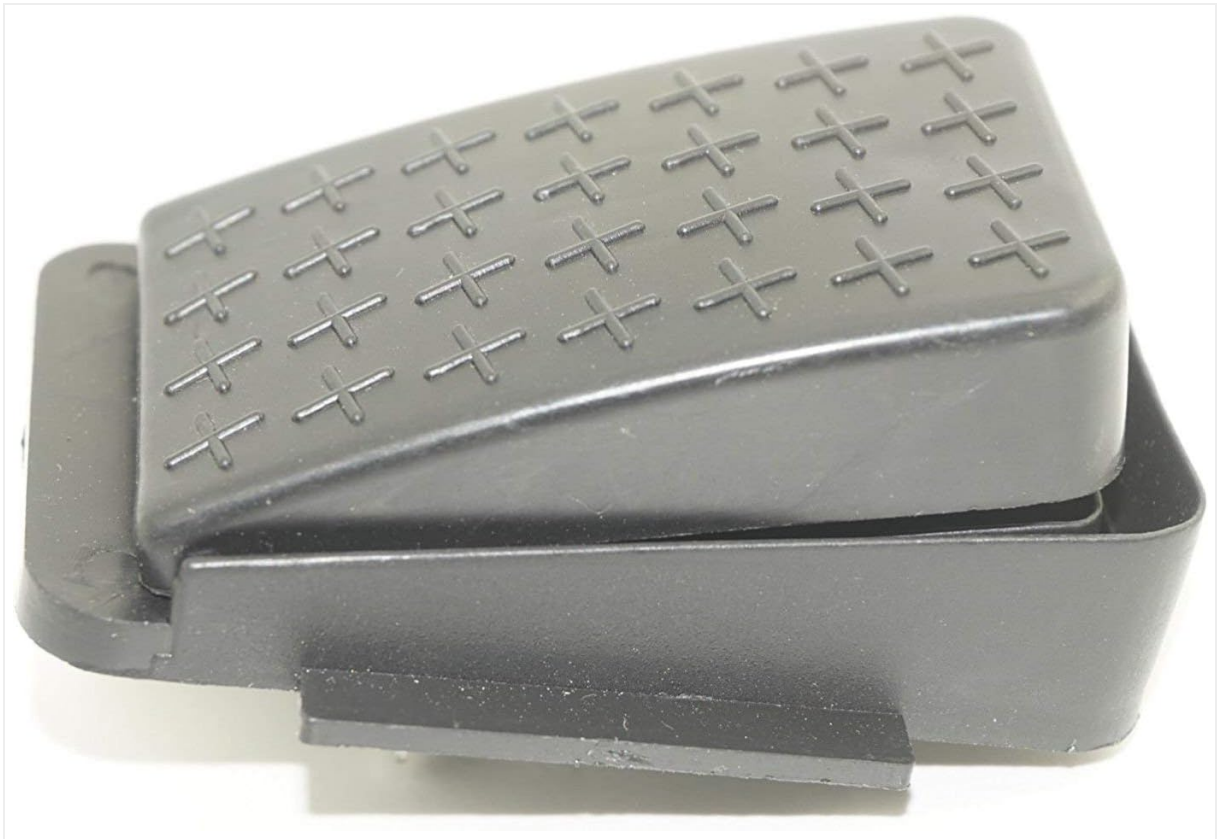


Figure 2: Side view of the accelerator foot pedal, illustrating its profile.



Figure 3: Underside view of the pedal, revealing the integrated electric switch mechanism.



Figure 4: Close-up of the 2-pin socket on the underside of the pedal, where the vehicle's wiring connects.

## 4.2 Installation Steps

1. **Prepare the Vehicle:** Ensure the ride-on car is turned off and disconnected from its power source (battery).
2. **Locate the Original Pedal:** Identify the existing accelerator foot pedal on the ride-on car.
3. **Remove the Old Pedal:** Carefully detach the old pedal. This may involve unscrewing it from its mounting point or releasing clips. Disconnect the 2-pin wiring connector from the old pedal.
4. **Connect the New Pedal:** Take the SHENGLE ACC-003 replacement pedal. Align the 2-pin socket on the new pedal with the corresponding connector from the vehicle's wiring. Gently push them together until a secure connection is made.
5. **Mount the New Pedal:** Position the new pedal in the designated area. Secure it using the original screws or clips. Ensure it is firmly in place and does not wobble.
6. **Test Functionality:** Reconnect the vehicle's battery. Turn on the ride-on car and perform a low-speed test to ensure the accelerator pedal functions correctly.

## 5. OPERATION

---

The SHENGLE ACC-003 Accelerator Foot Pedal operates identically to the original part. When the ride-on car is powered on, pressing the pedal engages the electric switch, sending a signal to the motor to accelerate. Releasing the pedal disengages the switch, causing the vehicle to slow down or stop, depending on the vehicle's design.

## 6. MAINTENANCE

---

- **Cleaning:** Wipe the pedal surface with a damp cloth to remove dirt and debris. Avoid using harsh chemicals or abrasive cleaners.
- **Connection Check:** Periodically inspect the 2-pin connection under the pedal to ensure it remains secure and free from corrosion.
- **Physical Inspection:** Check the pedal for any signs of damage, cracks, or excessive wear. Replace if

significant damage is observed.

## 7. TROUBLESHOOTING

---

Problem	Possible Cause	Solution
Pedal does not respond / Car does not move.	Loose or disconnected wiring.	Check the 2-pin connection under the pedal and ensure it is securely attached.
	Vehicle battery is low or dead.	Charge the vehicle's battery.
	Faulty switch within the pedal.	If connections and battery are fine, the pedal switch may be defective and require replacement.
Pedal feels stiff or sticky.	Dirt or debris lodged in the mechanism.	Clean the pedal and its surrounding area. Ensure no foreign objects impede its movement.

## 8. SPECIFICATIONS

---

Feature	Detail
Model Number	ACC-003
Brand	SHENGLE
Connector Type	2-pin socket
Color	Black
Package Dimensions	2.95 x 2.72 x 1.42 inches
Item Weight	0.634 ounces
Manufacturer Recommended Age	0 - 10 years (for compatible ride-on cars)

## 9. WARRANTY AND SUPPORT

---

Specific warranty details for the SHENGLE ACC-003 Accelerator Foot Pedal Electric Switch are not provided in this manual. For warranty claims or technical support, please refer to the retailer or manufacturer's official contact information. Keep your purchase receipt as proof of purchase.