

TMEZON MZ-HD-1408M

TMEZON 8-Channel 5-in-1 Digital Video Recorder (DVR) User Manual

Brand: TMEZON | Model: MZ-HD-1408M

[Overview](#) [Setup](#) [Operation](#) [Introduction](#) [Product](#) [Maintenance](#) [Troubleshooting](#) [Specifications](#) [Warranty & Support](#)

1. INTRODUCTION

This user manual provides comprehensive instructions for the installation, operation, and maintenance of your TMEZON 8-Channel 5-in-1 Digital Video Recorder (DVR). This versatile recorder supports multiple camera types, including traditional analog, AHD, TVI, CVI, and IP cameras, offering a flexible solution for your security monitoring needs. Please read this manual carefully before using the product to ensure proper setup and optimal performance.

2. PRODUCT OVERVIEW

The TMEZON 8-Channel 5-in-1 DVR is designed for robust and reliable video surveillance. It features advanced H.264 video compression technology, enabling high-resolution recording over extended periods while optimizing storage space. The system supports a single internal 3.5-inch SATA HDD up to 6TB for local storage (HDD not included). Key functionalities include motion detection, email notifications for alerts, and remote viewing capabilities via smartphone applications.



Figure 2.1: Front view of the TMEZON 8-Channel DVR, showing the brand logo and power/HDD indicators.



Figure 2.2: Detailed view of the DVR's dimensions (220mm x 260mm x 42mm) and its rear panel, illustrating various input/output ports including video inputs, HDMI, VGA, audio, network, and USB ports.



Figure 2.3: Illustration of the DVR's 5-in-1 compatibility, showing connections for 3K/5MP TVI, 4MP AHD, 4MP CVI, CVBS, and 6MP IP cameras. SDI cameras are not compatible.

3. SETUP GUIDE

Follow these steps to set up your TMEZON DVR system:

1. **HDD Installation:** Open the DVR casing and securely install a 3.5-inch SATA hard disk drive (up to 6TB). Use the provided screws to fix the HDD in place. (Note: HDD is not included with the DVR).
2. **Connect Cameras:** Connect your security cameras to the corresponding video input ports on the rear panel of the DVR. Ensure all connections are secure.
3. **Connect to Monitor:** Connect a 1080p monitor to the DVR via the HDMI or VGA port. A 1080p monitor is required for proper display; lower resolution monitors may not show an image.
4. **Network Connection:** Connect the DVR to your network router using an Ethernet cable for remote access capabilities.
5. **Power On:** Connect the provided power adapter to the DVR and plug it into a power outlet. The DVR will power on automatically.
6. **Initial Configuration:** Follow the on-screen prompts to complete the initial setup, including setting the date, time, and administrator password.
7. **Mobile App Setup:** Download the recommended mobile application (e.g., XMEye) from your smartphone's app store. Scan the QR code displayed on the DVR's monitor or found in the electronic manual to add your device for remote viewing.

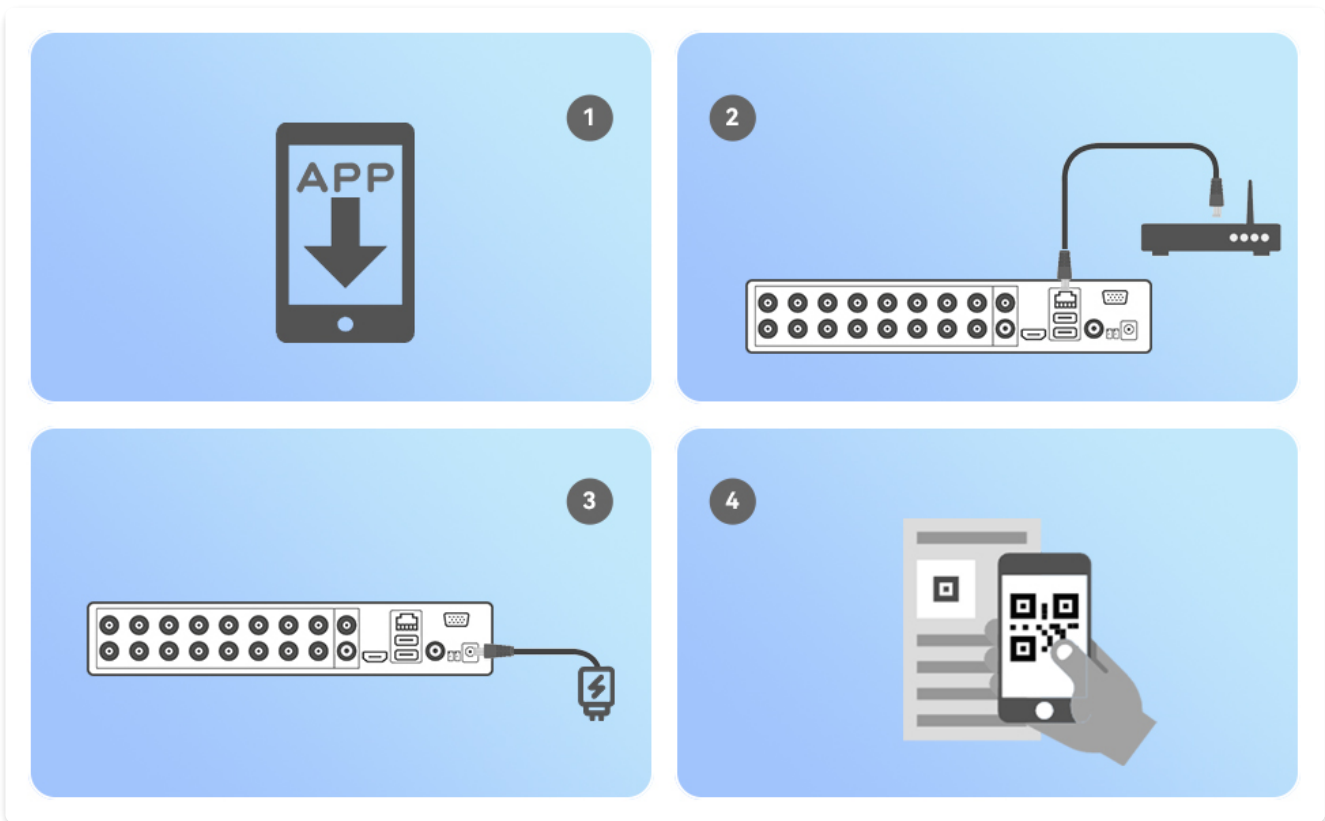
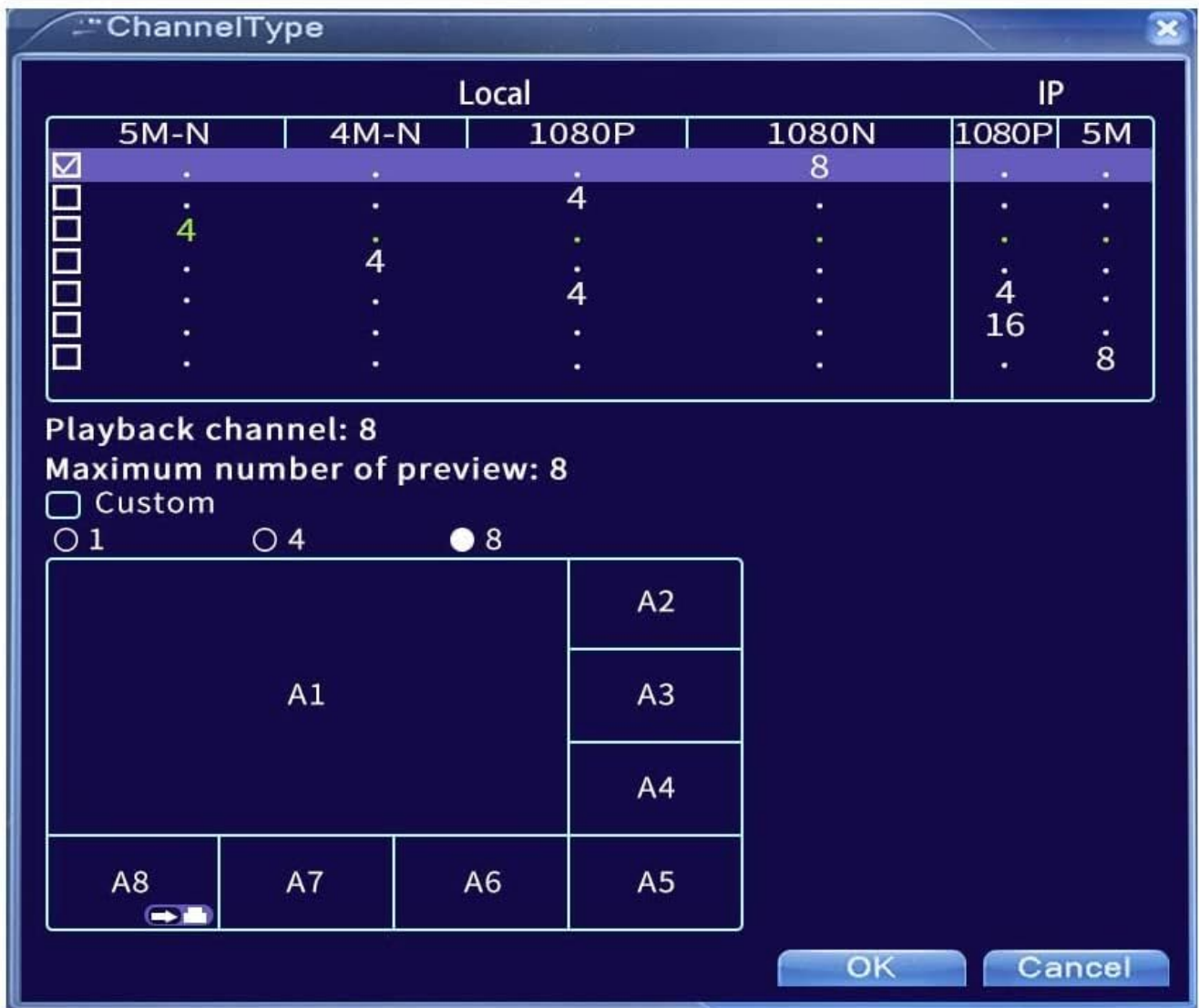


Figure 3.1: Visual guide for DVR setup, including app download, network connection, power connection, and QR code scanning for remote access.

4. OPERATING INSTRUCTIONS

4.1 Live View and Playback

Once the DVR is set up, you can view live camera feeds on the connected monitor. Use the included mouse to navigate the on-screen menu. To access recorded footage, select the 'Playback' option from the main menu. You can search for recordings by date, time, and event type (e.g., motion detection).



* Notes: SDI Cameras and brand ZOSI cameras are not compatible with this DVR.

Figure 4.1: Screenshot of the DVR's 'ChannelType' configuration screen, allowing users to select local (AHD, TVI, CVI) or IP camera input types and playback channels.

4.2 Recording Functions

The DVR supports continuous recording, scheduled recording, and motion-triggered recording. Configure these settings via the 'Record' menu. For motion detection, you can define specific areas within the camera's view to trigger recording and email alerts.

4.3 Remote Monitoring

Access your camera feeds remotely using the mobile application on your iPhone, iPad, or Android device. After adding your DVR to the app, you can view live streams, play back recordings, and receive push notifications from anywhere with an internet connection.

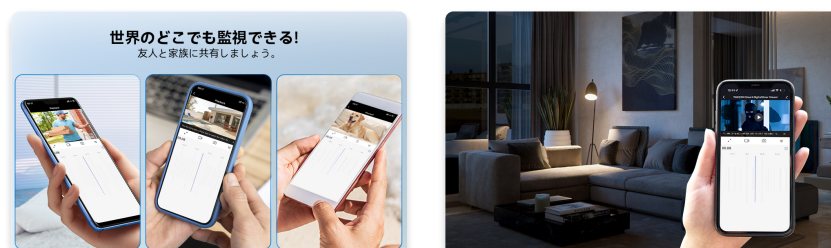


Figure 4.2: Examples of remote monitoring on mobile devices, allowing users to view live and recorded footage from various

locations.

4.4 Data Backup

To back up recorded video, connect a USB memory stick to one of the DVR's USB ports. Navigate to the 'Backup' menu, select the desired footage, and initiate the backup process. Videos are typically exported in MP4 format.

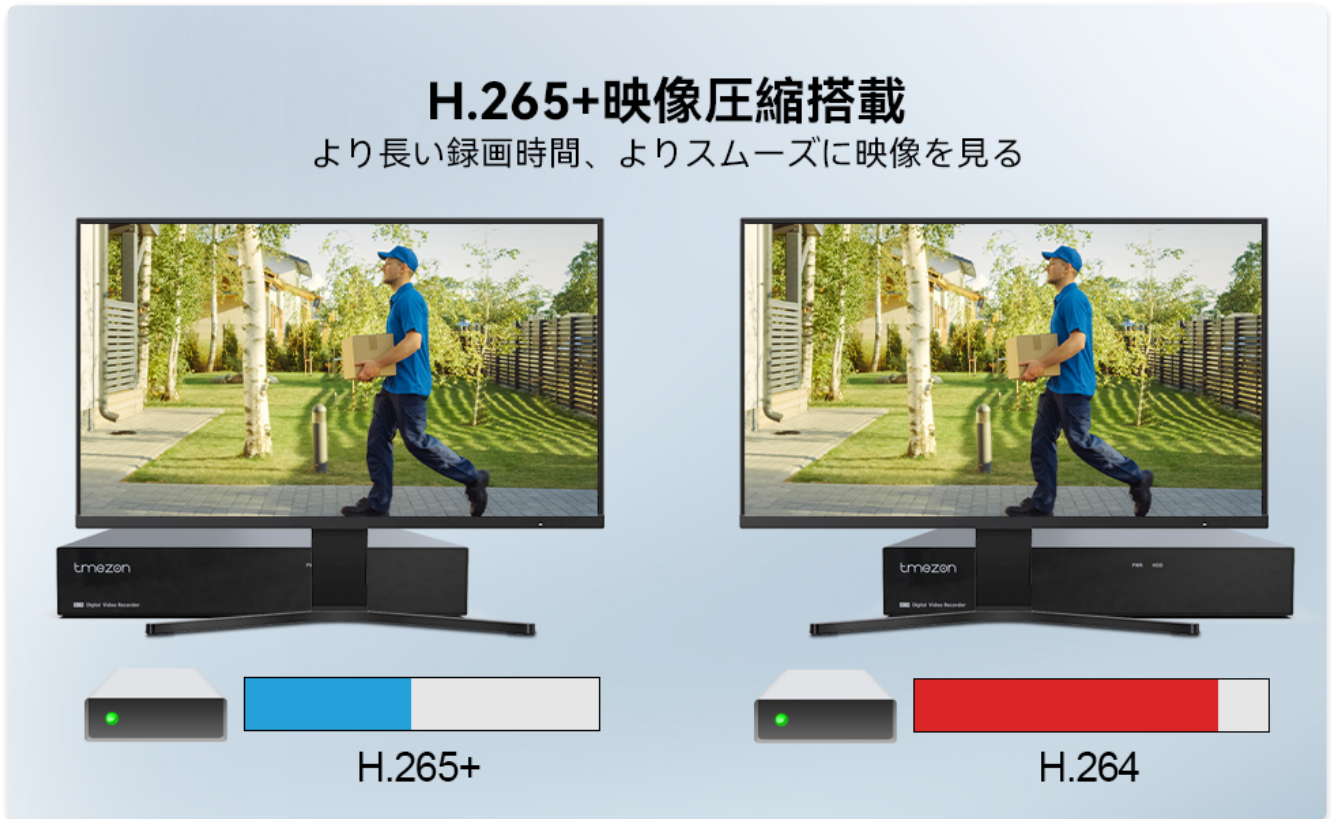


Figure 4.3: Visual comparison demonstrating the efficiency of H.265+ compression over H.264, indicating longer recording times and smoother video playback with less storage consumption.

5. MAINTENANCE

Regular maintenance ensures the longevity and optimal performance of your DVR system:

- **Cleaning:** Periodically clean the exterior of the DVR with a soft, dry cloth. Do not use liquid cleaners or aerosols. Ensure ventilation openings are free from dust and obstructions.
- **Firmware Updates:** Check the TMEZON official website or contact support for any available firmware updates. Keeping your DVR's firmware up-to-date can improve performance, add new features, and enhance security.
- **HDD Health Check:** Regularly check the health status of your installed HDD through the DVR's system settings. Replace the HDD if any errors or warnings are detected to prevent data loss.
- **Environmental Conditions:** Ensure the DVR is placed in a well-ventilated area, away from direct sunlight, heat sources, and excessive moisture.

6. TROUBLESHOOTING

If you encounter issues with your TMEZON DVR, refer to the following common problems and solutions:

- **No Image on Monitor:**
 - Ensure the monitor is 1080p compatible.

- Check HDMI/VGA cable connections.
- Verify the DVR is powered on.

- **No Recording:**

- Confirm an HDD is installed and properly formatted.
- Check recording schedule settings.
- Ensure cameras are properly connected and functioning.

- **Remote Access Issues:**

- Verify the DVR is connected to the internet.
- Check network settings (DHCP, port forwarding if necessary).
- Ensure the mobile app is updated to the latest version.
- Re-scan the device's QR code in the app.

- **Motion Detection Not Working:**

- Review motion detection area settings and sensitivity.
- Ensure recording schedule for motion detection is active.

For more detailed troubleshooting or issues not covered here, please refer to the electronic version of the manual or contact TMEZON customer support.

7. SPECIFICATIONS

Feature	Description
Brand	TMEZON
Model Number	MZ-HD-1408M
Number of Channels	8
Video Input	AHD (5-in-1 compatible: Analog, AHD, TVI, CVI, IP)
Video Compression	H.264 (H.265+ support also indicated)
Supported HDD	1 x 3.5-inch SATA, up to 6TB (HDD not included)
Media Format (Digital Video)	MP4
Product Dimensions	26 cm (L) x 22 cm (W) x 4.2 cm (H)
Package Weight	1.2 Kilograms
Monitor Requirement	1080p monitor required

8. WARRANTY AND SUPPORT

TMEZON is committed to providing reliable products and excellent customer service. Your TMEZON DVR comes with a **1-year warranty** from the date of purchase and a **30-day money-back guarantee**.

If you have any questions, concerns, or require technical assistance, please do not hesitate to contact our support team:

- **Email Support:** tmezoncctvsystem@yahoo.com
- **Electronic Manual:** For a detailed electronic version of this manual and additional resources, please download it from: <https://yahoo.jp/box/9ps3fN>

We strive to respond to all inquiries promptly and provide effective solutions.