

KATCHY Katchy Glue Board Refills (for Original and Automatic Traps)

Katchy Original and Midnight Glue Board Refills User Manual

Brand: KATCHY

Model: Glue Board Refills (for Katchy Original and Automatic Traps)

1. INTRODUCTION

Thank you for choosing Katchy Glue Board Refills. These refills are designed to work seamlessly with your Katchy Original and Katchy Automatic Indoor Insect Traps, providing an effective, non-zapper solution for capturing flying insects such as mosquitoes, gnats, moths, and fruit flies. Each pack contains 8 super sticky glue boards, ensuring a buzz-free environment in your home.



Image 1.1: Katchy Glue Board Refills shown with compatible Katchy Original and Midnight insect traps. These circular glue boards are designed to fit perfectly within the base of the specified Katchy devices.

2. SETUP AND INSTALLATION

Installing the Katchy Glue Board Refills is a simple process. Ensure your Katchy insect trap is unplugged before proceeding with installation or replacement.

1. **Prepare the Trap:** Open the base of your Katchy Original or Katchy Automatic insect trap.
2. **Remove Old Board (if applicable):** If there is an old, used glue board, carefully remove it and dispose of it properly.
3. **Peel Protective Layer:** Take a new Katchy Glue Board Refill. Locate the "PEEL HERE" tab and carefully peel off the protective layer from the sticky surface. Ensure the side marked "THIS SIDE UP" faces upwards.
4. **Place New Board:** Place the new glue board, sticky side up, into the designated slot at the bottom of your Katchy insect trap. Ensure it sits flat and securely.
5. **Close the Trap:** Close the base of the Katchy trap securely.



fits Katchy Original or Katchy Midnight

1. Remove the plastic cover from the glue board
2. Place a new, mess-free glue board on the bottom of the trap
3. Close the trap

Image 2.1: Visual guide demonstrating the three simple steps to install a new glue board into a Katchy insect trap: remove plastic cover, place board, and close the trap.

3. OPERATION AND EFFECTIVENESS

Once installed, the glue board works in conjunction with your Katchy insect trap's UV light and fan system. The UV light attracts flying insects, and the fan draws them down onto the super sticky glue board, where they are securely trapped.

- **Super Sticky Surface:** The glue boards are designed with a highly adhesive surface to ensure that even the smallest insects are effectively caught and held.
- **Target Species:** These glue boards are effective against a variety of common indoor flying pests, including mosquitoes, gnats, moths, and fruit flies. *Note: Not intended for house flies.*
- **Visible Results:** You can expect to see visible results of trapped insects within one week of continuous operation.



Katchy refillable glue boards

Long-lasting glue
makes boards sticky
enough to work for
over a month.



Image 3.1: A Katchy glue board after use, showing numerous small insects trapped on its sticky surface, demonstrating its effectiveness.

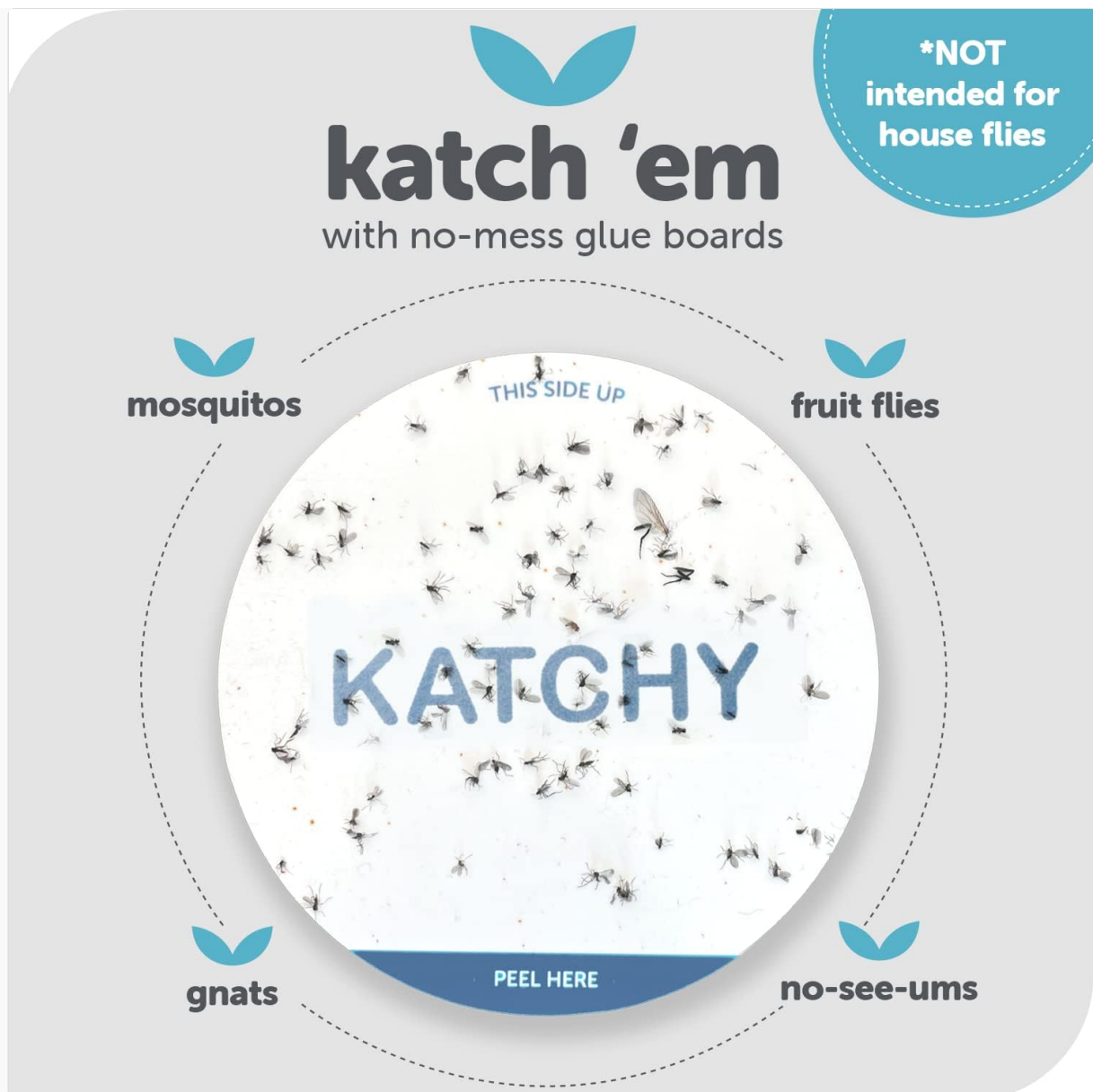


Image 3.2: An illustration highlighting the types of insects effectively caught by Katchy glue boards, including mosquitoes, gnats, fruit flies, and no-see-ums.

4. MAINTENANCE AND REPLACEMENT

Regular replacement of the glue boards is essential to maintain the effectiveness of your Katchy insect trap.

- **Replacement Frequency:** Replace the glue board when it is fully covered with insects or after approximately 4 weeks of use, whichever comes first. The long-lasting glue maintains its stickiness for up to 4 weeks.
- **Disposal:** To replace, unplug the Katchy trap, open the base, carefully remove the used glue board (avoiding contact with trapped insects), and dispose of it in a sealed bag with household waste.
- **Cleanliness:** Ensure the inside of the trap is free from debris before inserting a new glue board.

5. TROUBLESHOOTING AND TIPS

If you notice reduced effectiveness, consider the following:

- **Board Full:** Check if the glue board is completely covered with insects. If so, replace it with a new one.
- **Trap Placement:** Ensure the Katchy trap is placed in an optimal location. Insects are most attracted to

UV light in the dark. Place the trap near problem areas such as plants, garbage, or food sources.

- **Environmental Factors:** For best results, use the trap indoors on a solid surface. Keep doors and windows closed to prevent new insects from entering the room and to concentrate existing insects towards the trap.
- **Initial Period:** Allow at least 3 days for the Katchy trap to significantly reduce the insect population in an area.

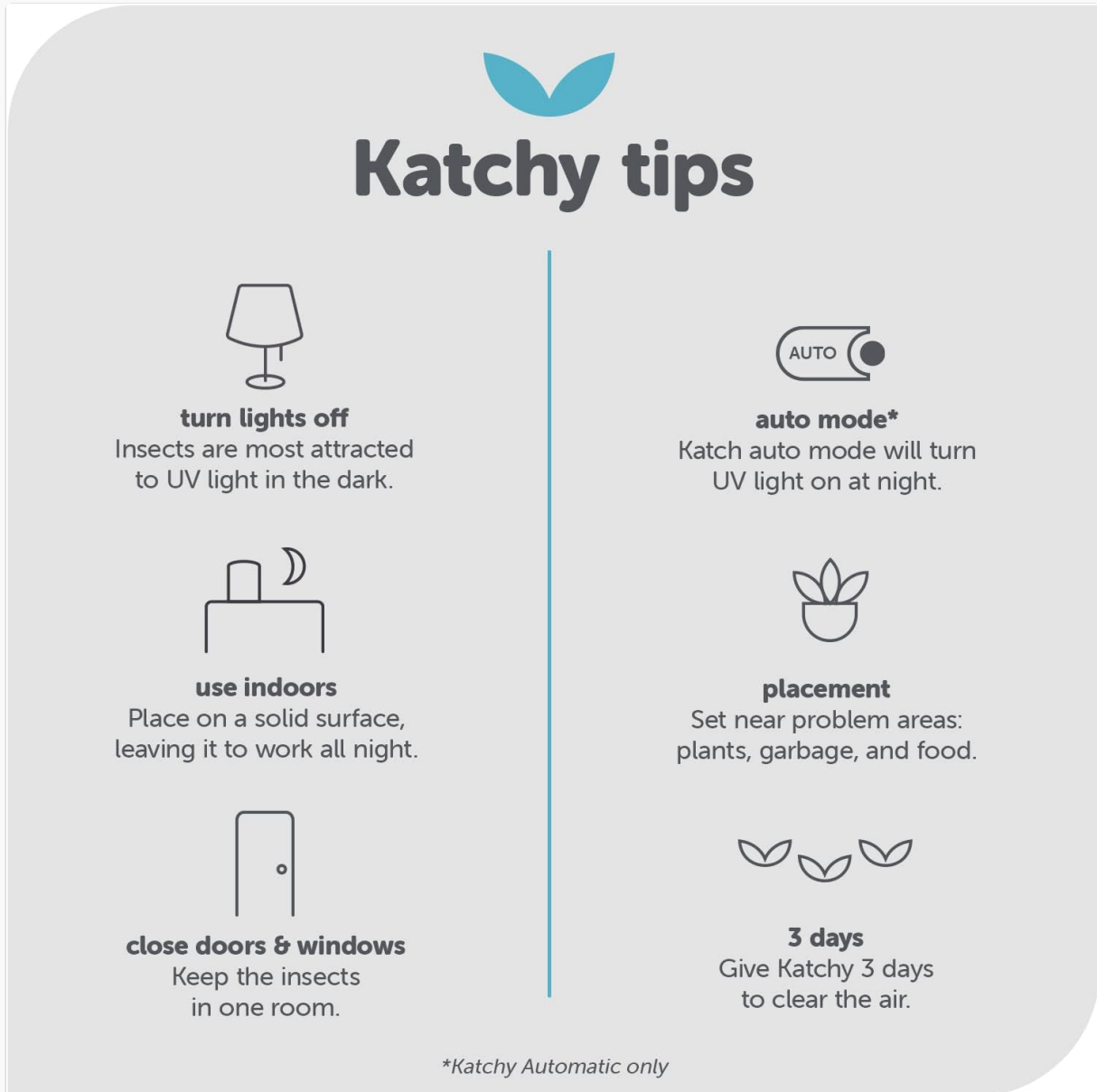


Image 5.1: A visual summary of Katchy usage tips, including turning off lights, indoor use, closing doors/windows, auto mode (for Katchy Automatic), and strategic placement.

6. SPECIFICATIONS

Attribute	Detail
Brand	KATCHY
Color	White
Style Compatibility	Original / Midnight / Automatic Katchy Traps

Material	Glue
Product Dimensions (each)	4.3"L x 4.3"W x 0.2"H (10.9 cm L x 10.9 cm W x 0.5 cm H)
Item Weight (each)	0.03 Kilograms (0.066 lbs)
Number of Pieces	8 per pack
Recommended Uses	Insect Trap Refill
Target Species	Fly, Gnat, Mosquito, Fruit Flies, Moths, No-see-ums

7. SAFETY INFORMATION

Please observe the following safety guidelines when handling Katchy Glue Board Refills:

- **Keep Out of Reach:** Store unused glue boards and operate the Katchy trap out of reach of children and pets to prevent accidental contact with the sticky surface.
- **Avoid Contact:** Avoid direct contact with the adhesive. If contact occurs, wash affected skin with soap and water.
- **Proper Disposal:** Dispose of used glue boards in a sealed bag to prevent trapped insects from escaping and to contain the adhesive.
- **Indoor Use Only:** These glue boards are designed for indoor use with compatible Katchy insect traps.

8. WARRANTY AND SUPPORT

For any questions regarding the Katchy Original and Midnight Glue Board Refills, or for support with your Katchy insect trap, please contact Katchy customer service. Refer to the packaging of your Katchy trap or visit the official Katchy website for contact information and warranty details.

Online Resources: For additional tips and product information, you may visit the Katchy store on Amazon: [KATCHY Store](#).