



Manuals.plus /

› findtime /

› findtime Military Tactical Digital Sports Watch DXSPOVANST02PR2BLACK User Manual

findtime DXSPOVANST02PR2BLACK

findtime Military Tactical Digital Sports Watch User Manual

Model: DXSPOVANST02PR2BLACK

1. INTRODUCTION

This manual provides detailed instructions for the operation and maintenance of your findtime Military Tactical Digital Sports Watch. Please read this manual thoroughly before using the watch to ensure proper function and longevity.

1.1 What's in the Box

- findtime Military Tactical Digital Sports Watch
- Watch Box
- Instruction Manual



Figure 1: findtime Military Tactical Digital Sports Watch (Front View)

2. SETUP

2.1 Turning On/Off the Watch

To turn on or turn off the watch, press and hold all four buttons (A, B, C, and D) simultaneously for 2 seconds.

**Press button A B C and D in the meanwhile
to turn on/off the watch**



Band Width 26MM(1.02")

Case Diameter 50MM(1.97")

Figure 2: Watch with buttons A (Light), B (Start), C (Mode), D (Reset) and dimensions.

2.2 App Download and Installation

The watch connects to your smartphone via the 'READfit' application. Scan the QR codes below or search for 'READfit' in your device's app store to download and install.



Figure 3: QR Codes for 'READfit' App Download (iOS and Android).

1. **For Android:** Scan the QR code or search "READfit" in Google Play.Download for Android
2. **For iOS:** Scan the QR code or search "READfit" in the App Store.Download for iOS

After installation, open the 'READfit' app. You will need to set up your personal information (gender, birth date, height, weight) and grant necessary permissions for the app to function correctly. Ensure Bluetooth is enabled on your phone.

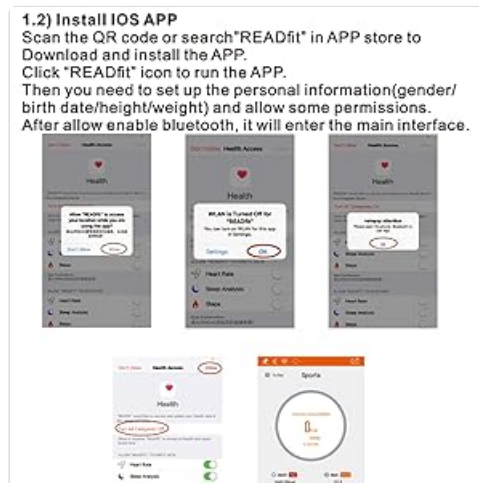


Figure 4: READfit App Initial Setup and Permissions (iOS example).

2.3 App Connection

1. Ensure Bluetooth is turned on for the watch (the Bluetooth icon will flash).
2. In the app, navigate to the "SET" interface and click the "Search device" icon.
3. If your phone's Bluetooth is off, the app will prompt you to enable it. Click "ALLOW" to proceed.
4. Select your watch from the device list to connect.
5. Once connected, synchronization information will display at the top of the app.
6. The Bluetooth icon on the watch will stop flashing, indicating a successful connection.

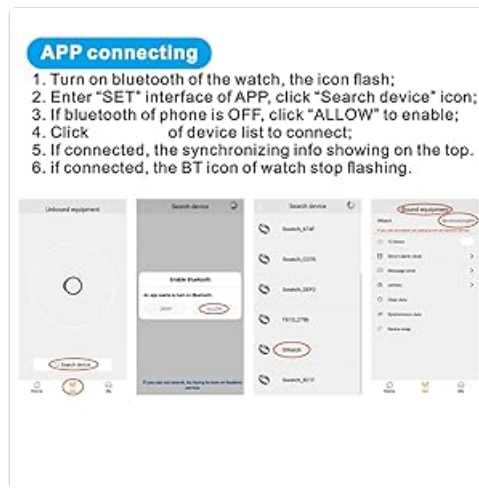


Figure 5: READfit App Device Connection Steps.

3. OPERATING INSTRUCTIONS

3.1 Basic Time and Date Display

The watch displays time, day of the week, date, and month. The professional digital movement ensures accurate timekeeping.

3.2 Backlight Function

The watch features an LED backlight for visibility in low-light conditions. Press the 'LIGHT' button (Button A) to activate the backlight. Note that the LED display may not be highly visible in bright daylight and is primarily intended for emergency use at night.

LED BACK LIGHT

The LED is not obvious during the day



NORMAL DISPLAY MODE

EL LIGHT DISPLAY MODE

The backlight of the watch is for emergency use at night.

Figure 6: Normal Display Mode vs. EL Light Display Mode.

3.3 Stopwatch and Alarm

The watch includes stopwatch functionality for timing activities and an alarm feature for daily reminders. Refer to the in-app settings for configuring alarms.

3.4 Remote Camera Control

Utilize the watch's remote camera control feature by entering the remote camera interface within the 'READfit' app. Press the designated button on the watch to remotely capture photos with your connected smartphone.



Figure 7: Remote Camera Control Functionality.

4. FEATURES

4.1 Fitness Tracking

The watch functions as an activity tracker, recording steps, calories burned, and distance covered. It supports setting personal fitness goals and stores activity data, aiding in maintaining an active lifestyle.



Figure 8: Fitness Tracking Features including Pedometer, Calorie, and Distance Counter.

4.2 Water Resistance

The watch is water resistant up to 165 feet (5ATM/50M), making it suitable for swimming and showering. However, it is crucial to avoid pressing any buttons while the watch is submerged in water. Also, avoid using the watch in extreme hot or cold temperatures to prevent damage.



Figure 9: Water Resistance up to 50 meters (5ATM).

4.3 Durability and Design

The watch features a protective mineral crystal to guard against scratches and a soft silicone strap designed for comfort and durability. Its military tactical style provides a robust aesthetic.

4.4 Bluetooth Connectivity

The watch offers Bluetooth connectivity, allowing it to pair with Android devices for seamless data synchronization and remote control functions. While compatible with iOS, certain features like music synchronization may be limited to Apple devices.

COMPATIBLE Bluetooth®

More compatible with a variety of smart phones on the market (Android and Apple IOS system)
Apple can only synchronize music and telephone.

SCAN THE QR CODE TO DOWNLOAD AND INSTALL APK BLUETOOTH NOTIFICATION



Figure 10: Bluetooth Compatibility with Smartphone App.

5. MAINTENANCE

5.1 Water Resistance Precautions

- Do not press any buttons while the watch is underwater.
- Avoid exposing the watch to extreme hot water (e.g., hot showers, saunas) or cold temperatures, as this can compromise the water seals.
- After exposure to saltwater, rinse the watch with fresh water and dry thoroughly.

5.2 Battery Care

The watch features a low power reminder. When this alert appears, consider replacing the battery to ensure continuous operation. The watch uses 1 unknown battery (included).

5.3 Cleaning

Clean the watch and strap regularly with a soft, damp cloth. Avoid using harsh chemicals or abrasive materials that could damage the watch's finish or crystal.

6. TROUBLESHOOTING

6.1 Watch Not Turning On

Ensure all four buttons (A, B, C, D) are pressed simultaneously and held for 2 seconds. If the watch still does not turn on, the battery may need replacement.

6.2 App Connectivity Issues

- Ensure Bluetooth is enabled on both your watch and smartphone.
- Restart both the watch and the smartphone.
- Ensure the 'READfit' app has all necessary permissions granted on your smartphone.
- If the app is undergoing an upgrade and you experience issues, contact customer support.

6.3 LED Backlight Not Obvious

The LED backlight is designed for emergency use at night and may not be clearly visible in bright environments or during the day. This is normal operation.

7. SPECIFICATIONS

Feature	Specification
Model Number	DXSPOVANST02PR2BLACK
Brand	findtime
Case Diameter	50MM (1.97")
Case Thickness	14MM (0.55")
Band Width	26MM (1.02")
Max Perimeter	250MM (9.84")
Min Perimeter	170MM (6.69")
Weight	62g
Water Resistance	5ATM (50M / 165 feet)
Movement	Professional Digital Movement
Crystal Material	Mineral Crystal
Strap Material	Soft Silicone
Connectivity	Bluetooth
Operating System Compatibility	Android (iOS compatible with some limitations)
Special Features	Alarm Clock, Backlight, Calorie Counter, Step Counter, Stopwatch, Remote Camera, Low Power Reminder

8. WARRANTY AND SUPPORT

For warranty information or technical support, please refer to the contact details provided with your purchase documentation or visit the official findtime website. If you encounter issues with the app, especially during upgrades, please contact customer support promptly.

9. PRODUCT VIDEO OVERVIEW

Video 1: An overview of the findtime Military Digital Sports Watch, highlighting its features and design.