

CTS RB-153

Sachs Dolmar PS630 PS6400 PS7300 PS7900 Zama C3M-D11C D12B Carb Kit RB-153 RB153 Instruction Manual

Model: RB-153 | Brand: CTS

1. INTRODUCTION

This instruction manual provides essential information for the proper installation, maintenance, and troubleshooting of the CTS Carburetor Repair Kit RB-153. This kit is designed to restore the functionality of compatible Zama carburetors used in various Sachs Dolmar chain saws and trimmers. Please read this manual thoroughly before attempting any repairs.

2. PRODUCT OVERVIEW

The RB-153 Carburetor Repair Kit includes all necessary gaskets, diaphragms, and small components required to rebuild and repair specific Zama carburetors. Regular maintenance and timely repair of your carburetor are crucial for optimal engine performance and longevity.

3. COMPATIBILITY

This repair kit is compatible with the following Zama Carburetors and Sachs Dolmar models:

- **Zama Carburetors:** C3M-DM11C, C3M-DM11D, C3M-12B
- **Sachs Dolmar Chain Saws & Trimmers:** PS-630, PS-6400, PS-6400D, PS-6400DH, PS-6400H, PS-7300, PS-7300D, PS-7300DH, PS-7300H, PS-7900, PS-7900D, PS-7900DH, PS-7900H

Always verify your carburetor model number before purchasing and installing this kit.

4. KIT CONTENTS

The RB-153 Carburetor Repair Kit typically includes the following components:

- Diaphragms
- Gaskets
- Inlet Needle
- Lever
- Spring
- Fuel Filter Screen

- Other small components as required for a complete rebuild.

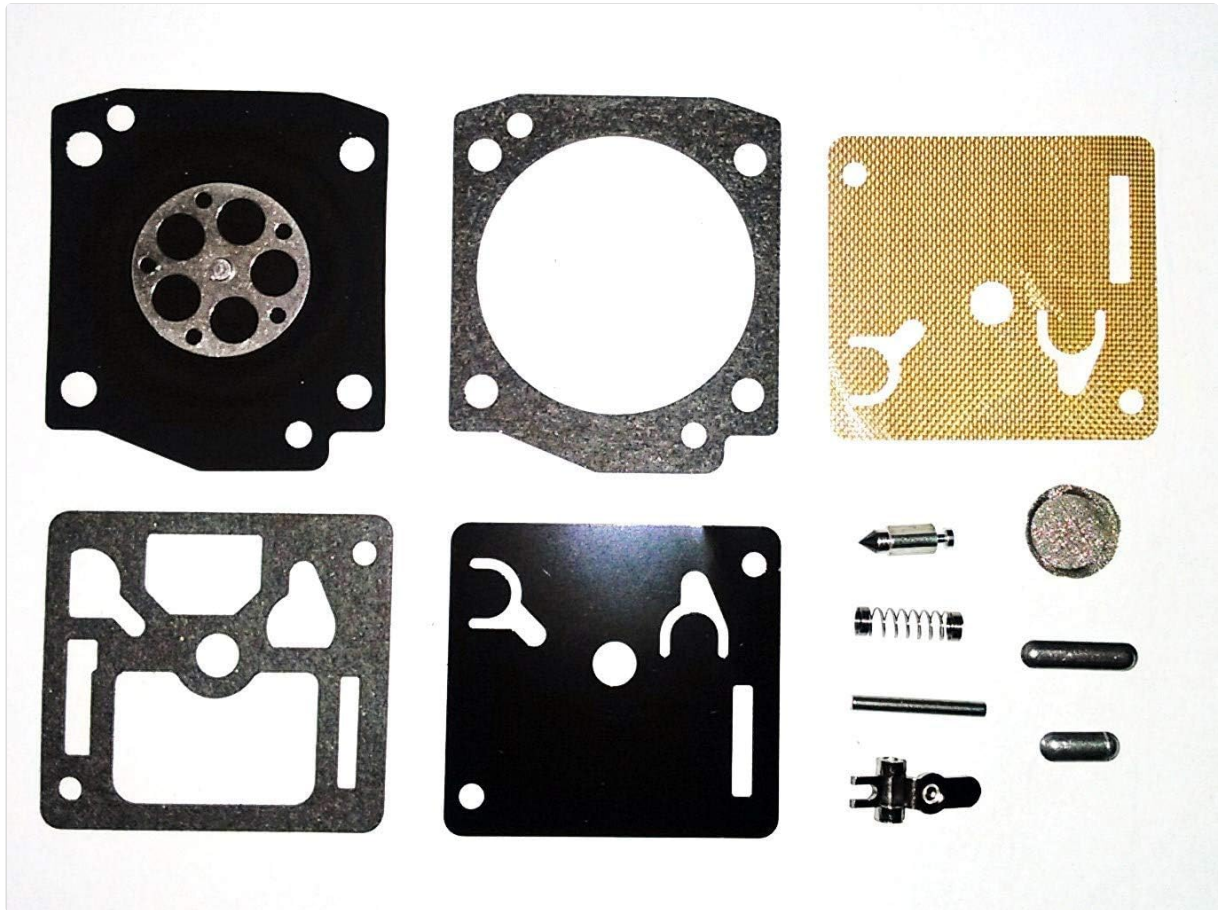


Image 1: Contents of the RB-153 Carburetor Repair Kit. The image displays a comprehensive set of components including various black rubber diaphragms and gaskets of different shapes, a metallic mesh filter, a small pointed inlet needle, a tiny spring, a metal pin, and two small cylindrical metal pieces. These parts are laid out on a white background, clearly showing the individual items included in the kit for carburetor repair.

5. INSTALLATION GUIDE

Safety First: Before beginning any work, ensure the engine is off, cool, and the spark plug wire is disconnected to prevent accidental starting. Wear appropriate safety gear, including gloves and eye protection.

Carburetor repair can be complex. If you are not confident in your mechanical abilities, it is recommended to seek assistance from a qualified service technician.

General Installation Steps:

1. **Disassembly:** Carefully remove the carburetor from the engine. Take photos or make notes of hose connections and linkage for reassembly.
2. **Cleaning:** Thoroughly clean the carburetor body, both inside and out, using a carburetor cleaner. Ensure all passages are clear of debris and old fuel residue.
3. **Old Parts Removal:** Remove all old gaskets, diaphragms, and internal components that are being replaced by the kit. Pay close attention to the order and orientation of each part.
4. **New Parts Installation:** Install the new components from the RB-153 kit according to the carburetor's service manual or the original component layout. Ensure diaphragms and gaskets are seated correctly and not pinched.
5. **Reassembly:** Reassemble the carburetor, ensuring all screws are tightened to the manufacturer's specifications. Reinstall the carburetor onto the engine, reconnecting all hoses and linkages.
6. **Initial Start-up:** After reassembly, prime the carburetor if necessary and attempt to start the engine.

Be prepared to make minor adjustments to the carburetor's idle and mixture screws if the engine does not run smoothly.

6. OPERATING CONSIDERATIONS (POST-INSTALLATION)

After installing the repair kit, proper operation of your equipment depends on correct carburetor function. Ensure the engine starts easily, idles smoothly, and accelerates without hesitation. If performance issues persist, refer to the troubleshooting section.

7. MAINTENANCE

To ensure the longevity of your carburetor and the effectiveness of the repair kit, consider the following maintenance tips:

- **Fuel Quality:** Always use fresh, clean fuel. Stale or contaminated fuel is a primary cause of carburetor issues.
- **Fuel Stabilizer:** Use a fuel stabilizer if storing the equipment for extended periods (over 30 days) to prevent fuel degradation and gumming.
- **Fuel Filter:** Regularly check and replace the fuel filter to prevent debris from entering the carburetor.
- **Air Filter:** Keep the air filter clean to ensure proper air-fuel mixture. A dirty air filter can cause the engine to run rich.
- **Periodic Inspection:** Periodically inspect the carburetor and fuel lines for leaks or damage.

8. TROUBLESHOOTING

If you encounter issues after installing the RB-153 kit, consider the following common problems and solutions:

Problem	Possible Cause	Solution
Engine won't start	Incorrect installation of gaskets/diaphragms, clogged fuel passages, improper fuel mixture settings.	Recheck installation, clean carburetor again, adjust mixture screws.
Engine runs rough/stalls	Air leak, fuel delivery issue, incorrect idle speed.	Check for air leaks around carburetor, verify fuel flow, adjust idle screw.
Fuel leaks from carburetor	Damaged or improperly seated gasket/diaphragm, faulty inlet needle.	Disassemble and inspect gaskets/diaphragms, replace inlet needle if necessary.

If problems persist after attempting these solutions, it may indicate a more complex issue requiring professional diagnosis.

9. SPECIFICATIONS





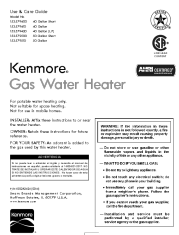
- **Package Dimensions:** 3.75 x 2.75 x 0.5 inches
- **Item Weight:** 1.58 ounces
- **Manufacturer:** Zama Aftermarket
- **ASIN:** B07GD5DL8J

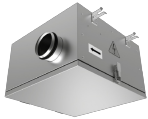
10. WARRANTY AND SUPPORT

Specific warranty information for the CTS Carburetor Repair Kit RB-153 is not provided within this manual. For details regarding warranty coverage, returns, or technical support, please contact the seller or manufacturer directly. Keep your purchase receipt as proof of purchase.

Seller: Copley Tech and Equipment

Related Documents - RB-153

	<p>Kenmore Power Miser 6 Electric Water Heater Owner's Manual and Installation Guide</p> <p>Comprehensive guide for the Kenmore Power Miser 6 electric water heater, covering safety precautions, installation, operation, service, troubleshooting, parts ordering, and warranty information. Includes model numbers 153.316152 through 153.316755.</p>
	<p>Kenmore Power Miser 9 Electric Water Heater Owner's Manual</p> <p>Comprehensive owner's manual for the Kenmore Power Miser 9 Electric Water Heater, covering installation, operation, safety, maintenance, and troubleshooting. Includes detailed product specifications and a parts list.</p>
	<p>Kenmore POWER MISER™ 9 Gas Water Heater Owner's Manual</p> <p>Comprehensive owner's manual for the Kenmore POWER MISER™ 9 Gas Water Heater, covering installation, operation, safety precautions, maintenance, troubleshooting, and parts. Includes model numbers and specifications.</p>
	<p>Kenmore Power Miser 8+ Electric Water Heater - Owners Manual and Installation Guide</p> <p>This comprehensive manual provides detailed instructions for the installation, operation, safety, troubleshooting, and parts ordering for the Kenmore Power Miser 8+ electric water heater. It includes essential safety precautions, step-by-step installation guides, and helpful tips for maintenance and repair.</p>
	<p>Kenmore Gas Water Heater Use & Care Guide</p> <p>Comprehensive guide for Kenmore Gas Water Heaters, covering installation, operation, safety precautions, maintenance, and troubleshooting. Includes model numbers and specifications.</p>



RADIAL-ROHRVENTILATOR MIT
SCHALLISOLIERTEM GEHÄUSE



[BLAUBERG ISO-RB Radial-Rohrventilator mit schallisoliertem Gehäuse - Betriebsanleitung](#)

Umfassende Betriebsanleitung für den BLAUBERG ISO-RB Radial-Rohrventilator mit schallisoliertem Gehäuse. Erfahren Sie mehr über technische Spezifikationen, Montageanleitungen, elektrische Anschlüsse, Wartung, Fehlerbehebung und Garantieinformationen.