

Manuals.plus /

› Whirlpool /

› Whirlpool WPW10469574 W11573574 OEM Dishwasher Vent and Fan Assembly User Manual

Whirlpool WPW10469574

Whirlpool WPW10469574 W11573574 OEM Dishwasher Vent and Fan Assembly User Manual

Genuine Replacement Part for Optimal Dishwasher Performance

INTRODUCTION

This manual provides essential information for the installation, operation, maintenance, and troubleshooting of your Whirlpool WPW10469574 W11573574 OEM Dishwasher Vent and Fan Assembly. This genuine Whirlpool part is designed to ensure efficient drying and ventilation within your compatible dishwasher, preventing moisture buildup and ensuring your dishes come out dry and spotless.

For over 100 years, Whirlpool has been committed to providing high-quality appliance parts. This replacement assembly is manufactured to meet Whirlpool's engineering standards, ensuring durability and reliable performance.

SAFETY INFORMATION

WARNING: Before attempting any repair or installation, always disconnect power to the dishwasher by unplugging the appliance or shutting off the house circuit breaker. Failure to do so can result in serious injury or electrical shock.

- Always wear appropriate personal protective equipment, such as gloves and eye protection.
- Ensure the work area is well-lit and clear of obstructions.
- If you are unsure about any step, consult a qualified appliance technician.
- Turn off hot and cold water supplies to the dishwasher before beginning work.

SETUP AND INSTALLATION

Replacing the dishwasher vent and fan assembly requires basic hand tools and some disassembly of the dishwasher. Follow these general steps for installation:

Tools Required:

- Basic hand tools (e.g., screwdrivers, pliers)

Installation Steps:

1. **Prepare the Dishwasher:** Ensure the dishwasher is completely disconnected from power and water supplies. Pull the dishwasher out from its cabinet if necessary to access the rear or side panels.
2. **Locate the Existing Assembly:** The vent and fan assembly is typically located near the top or side of the dishwasher tub, often accessible from the front or by removing the outer door panel. Refer to your specific dishwasher model's service manual for exact location.
3. **Disconnect Wiring and Hoses:** Carefully disconnect any electrical connectors and hoses attached to the existing vent and fan assembly. Note their positions for reassembly.
4. **Remove Old Assembly:** Unfasten any screws, clips, or tabs securing the old assembly in place. Gently remove the old unit.
5. **Install New Assembly:** Position the new Whirlpool WPW10469574 assembly in the correct orientation. Secure it with the original screws, clips, or tabs.
6. **Reconnect Wiring and Hoses:** Reattach all electrical connectors and hoses to the new assembly, ensuring a secure fit.
7. **Test and Reassemble:** Once the new assembly is installed, carefully slide the dishwasher back into place (if moved). Reconnect power and water supplies. Run a short test cycle to ensure proper operation and check for any leaks or unusual noises. Reassemble any panels or components removed during the process.

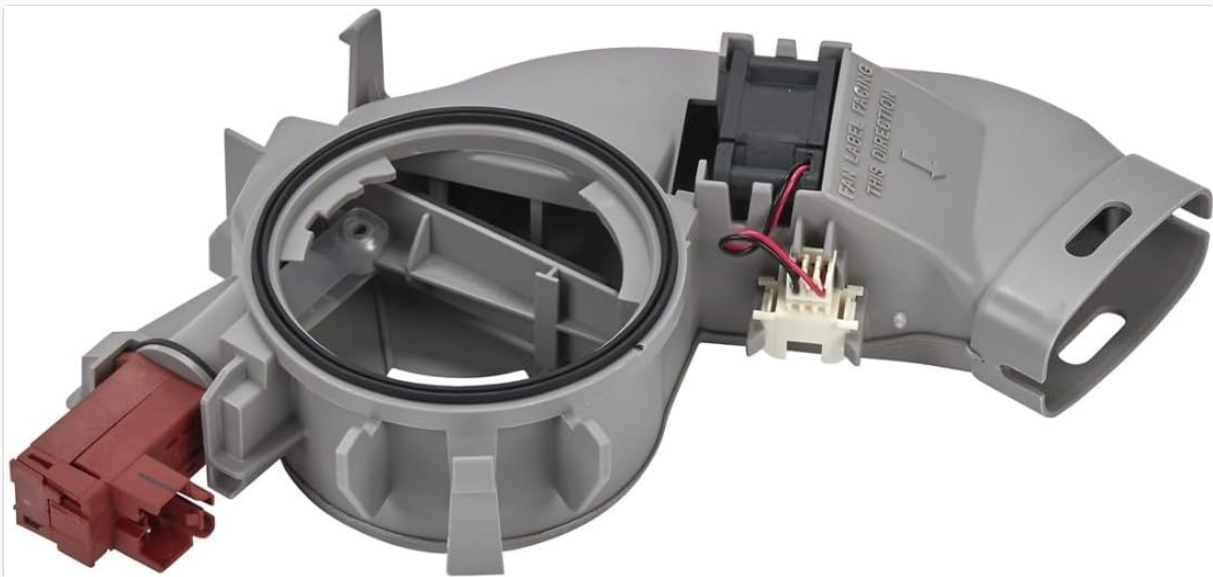


Figure 1: Front view of the Whirlpool WPW10469574 Dishwasher Vent and Fan Assembly.

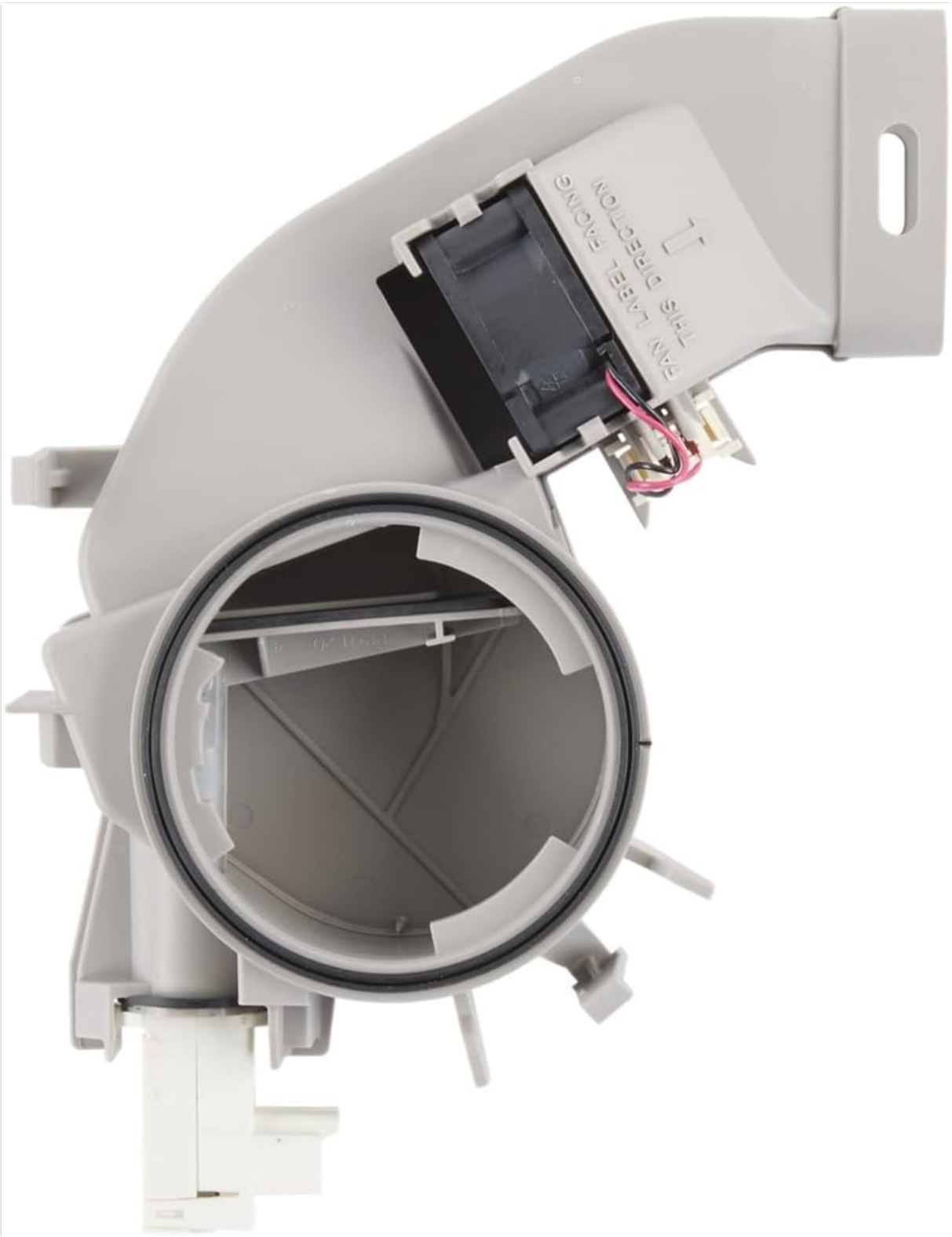


Figure 2: Side view of the assembly, showing the fan housing.



Figure 3: Rear view of the assembly, highlighting connection points.

OPERATING PRINCIPLE

The Dishwasher Vent and Fan Assembly plays a crucial role in the drying cycle of your dishwasher. During the drying phase, the fan activates to draw moist air from inside the dishwasher tub and expel it, often through a vent located on the dishwasher door or side. This process helps to evaporate water from dishes and prevent condensation, ensuring that items are dry and ready for storage at the end of the cycle.

MAINTENANCE

The vent and fan assembly is designed for long-term reliability. Regular maintenance of your dishwasher can help ensure its optimal performance:

- **Clean Dishwasher Filters:** Regularly clean your dishwasher's filters to prevent food particles from circulating and potentially obstructing the vent system.
- **Use Rinse Aid:** Using a rinse aid can significantly improve drying performance by reducing water spots and allowing water to sheet off dishes more effectively, thus reducing the workload on the vent and fan.
- **Inspect Vent Area:** Periodically inspect the vent area for any debris or blockages that might impede airflow.

TROUBLESHOOTING

If your dishwasher is not drying dishes effectively or displaying error codes related to ventilation, the vent and fan assembly may be a contributing factor. Common symptoms of a failing vent and fan assembly include:

- Dishes remaining wet after a full drying cycle.
- Excessive condensation inside the dishwasher or on the surrounding cabinetry.
- Error codes related to drying or ventilation (e.g., a