

Wellfit 180springbar

Wellfit 1.8mm Stainless Steel Watch Spring Bars Instruction Manual

Model: 180springbar Series

1. PRODUCT OVERVIEW

Wellfit watch spring bars are designed for securing watch bands to watch cases or buckles. These spring bars are constructed from high-quality 316L stainless steel, known for its strength, durability, and resistance to corrosion, rust, and staining from water. The inner flexible spring is made of high-quality spring steel, ensuring strong and resilient performance.

The spring bars feature a double flange design, which allows for quick and easy insertion and removal, simplifying watch band adjustments or repairs. With a standard diameter of 1.8mm, these pins are compatible with most watch bands and watches. Due to manufacturing tolerances, the actual diameter may range between 1.77mm and 1.80mm.

Wellfit spring bars are available in a range of widths to fit various watches: 18mm, 19mm, 20mm, 21mm, 22mm, 23mm, 24mm, 25mm, and 26mm. Each package typically contains 4 spring bars.

Important Note: The size of the spring bar you need corresponds to the lug width of your watch band or the buckle width if the spring bar is intended for buckle attachment. Spring bars are designed to be slightly longer than the stated size due to their spring mechanism, which is essential for a secure fit within the watch lugs.

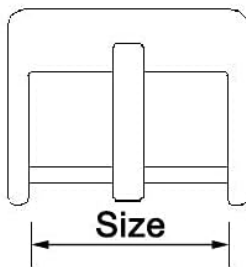
2. DETERMINING THE CORRECT SIZE

Before installing new spring bars, it is crucial to determine the correct size for your watch. The size refers to the distance between the lugs on your watch case or the width of your watch buckle.

Find the right size



OR



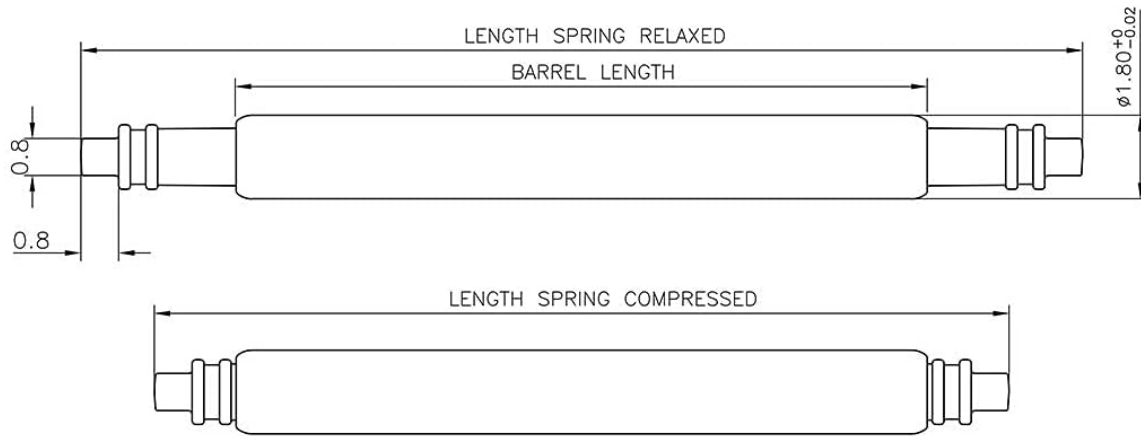
1. Measure the distance in millimeters between the lugs on your watch case or watch buckle. This determines the watch pin size.
2. Select the right size of the watch pin.

Size:

18mm
19mm
20mm
21mm
22mm
23mm
24mm
25mm
26mm

Figure 2.1: Diagram illustrating how to measure the lug width of a watch or the width of a watch buckle to determine the correct spring bar size.

Spring Bar Sizes and Dimensions



SIZE	LENGTH SPRING COMPRESSED	LENGTH SPRING RELAXED	BARREL LENGTH	DIAMETER
18mm	17.8	21.1	14.5	1.8
19mm	18.8	22.1	15.6	1.8
20mm	19.8	23.1	16.6	1.8
21mm	20.8	24.1	17.6	1.8
22mm	21.8	25.1	18.6	1.8
23mm	22.8	26.0	19.6	1.8
24mm	23.8	27.2	20.6	1.8
25mm	24.8	28.0	21.5	1.8
26mm	25.8	29.0	22.6	1.8

***All dimensions in millimetre (mm).**

Figure 2.2: Table detailing the length of spring bars when compressed and relaxed, barrel length, and diameter for various sizes (18mm to 26mm).

Measure the distance in millimeters between the lugs on your watch case. This measurement directly corresponds to the required watch pin size. Alternatively, if replacing a pin on a buckle, measure the buckle's internal width. Refer to the provided size chart to select the appropriate spring bar length.

3. INSTALLATION AND REMOVAL

Wellfit double flange spring bars are designed for ease of installation and removal using a standard spring bar tool. The following steps outline the general process:

3.1. Removing a Watch Band

1. Position the watch face down on a soft, clean surface to prevent scratches.
2. Locate the spring bar at one end of the watch band, where it connects to the watch lug.
3. Using the forked end of a spring bar tool, gently press the flange of the spring bar inward, compressing the spring.
4. While keeping the spring compressed, carefully pull the watch band away from the watch lug to release one end of the spring bar.
5. Once one end is free, the other end can be easily removed from the opposite lug hole.

6. Repeat the process for the other side of the watch band.

3.2. Installing a Watch Band

1. Insert one end of the new spring bar into one of the lug holes on the watch case.
2. Align the watch band with the lugs.
3. Using the spring bar tool, compress the exposed end of the spring bar.
4. Guide the compressed end into the opposite lug hole. Ensure both ends of the spring bar are securely seated within their respective lug holes. You should feel a slight 'click' as it locks into place.
5. Gently tug on the watch band to confirm it is securely attached and does not easily detach.
6. Repeat the process for the other side of the watch band.

Video 3.1: Demonstration of watch pin replacement using a spring bar tool. This video illustrates the process of removing and installing watch pins for band replacement.

4. MAINTENANCE

Wellfit stainless steel spring bars require minimal maintenance. To ensure their longevity and proper function:

- **Regular Inspection:** Periodically inspect the spring bars for any signs of bending, corrosion, or wear, especially if you frequently change watch bands or expose your watch to harsh conditions.
- **Cleaning:** If the spring bars become dirty, wipe them with a soft, damp cloth. Avoid using harsh chemicals or abrasive materials, which could damage the steel.
- **Storage:** Store unused spring bars in a dry, clean place to prevent dust accumulation and potential damage.

**Quality, not quantity,
is our measure.**



Figure 4.1: A close-up view of the Wellfit stainless steel watch spring bars, highlighting their construction.

High-quality materials ensure strength and durability



Figure 4.2: Wellfit watch spring bars with a visible internal spring, demonstrating the heavy-duty spring mechanism.

5. TROUBLESHOOTING

- **Spring bar does not fit:** Ensure you have measured your watch's lug width correctly and selected the corresponding spring bar size. Remember that the spring bar itself will be slightly longer than the stated size to allow for compression and a secure fit. If the diameter is too large for the lug holes, verify the 1.8mm diameter is compatible with your watch.
- **Difficulty installing/removing:** Use a proper spring bar tool. The double flange design requires the tool to compress the spring effectively. Ensure the tool's fork is correctly seated on the flange. Avoid excessive force, which can damage the watch lugs or the spring bar.
- **Watch band feels loose:** Double-check that both ends of the spring bar are fully seated in the lug holes. A loose fit can indicate an incorrect spring bar size (too short) or improper installation.

6. SPECIFICATIONS

Feature	Detail
Material	316L Stainless Steel

Diameter	1.8mm (1.77mm - 1.80mm tolerance)
Available Lengths	18mm, 19mm, 20mm, 21mm, 22mm, 23mm, 24mm, 25mm, 26mm
Design	Double Flange
Package Quantity	4 spring bars per package
Item Weight	0.352 ounces (for 18mm, may vary by size)
Manufacturer	Wellfit

7. WARRANTY AND SUPPORT

Wellfit products are manufactured to high-quality standards. For any questions, concerns, or support regarding your Wellfit watch spring bars, please refer to the contact information provided with your purchase or visit the official Wellfit website. Specific warranty details may vary and are typically included with the product packaging.