

## AMP Research 78240-01A

# AMP Research PowerStepXTreme User Manual

Model: 78240-01A  
Brand: AMP Research

### PRODUCT OVERVIEW

The AMP Research PowerStepXTreme is an automatic, electric-powered running board system designed for trucks, Jeeps, SUVs, and vans. It automatically extends when the vehicle door is opened and retracts out of sight when the door is closed, providing improved ground clearance, aerodynamics, and a clean appearance. This system is specifically engineered for challenging environments, featuring dual motors for enhanced power and durability. This manual provides essential information for the installation, operation, maintenance, and troubleshooting of your PowerStepXTreme system.

### COMPATIBILITY

This PowerStepXTreme system (Model 78240-01A) is compatible with:

- 2019 - 2024 RAM 1500

### PACKAGE CONTENTS

Upon unpacking, verify that all components are present:

- Two (2) PowerStepXTreme Boards
- All necessary Hardware
- Wiring Harness
- Installation Instructions
- Plug-n-Play Module



Image: The two PowerStepXTreme boards, showing their robust construction and integrated motor assemblies, ready for installation.

## INSTALLATION GUIDE

---

Installation of the AMP Research PowerStepXTreme is designed to be straightforward, with a vehicle-specific guide included in the package. Basic tools are required, and some drilling of small holes may be necessary for certain vehicle configurations.

### General Installation Steps:

1. Review the complete installation guide provided with your product before beginning.
2. Ensure the vehicle is parked on a level surface and the engine is off.
3. Identify mounting points on the vehicle's chassis.
4. Attach the mounting brackets and motor assemblies according to the vehicle-specific instructions.
5. Secure the PowerStepXTreme boards to the installed brackets.
6. Connect the wiring harness and plug-n-play module to the vehicle's electrical system as directed.
7. Test the operation of the steps by opening and closing the vehicle doors.

For detailed, step-by-step instructions and diagrams, refer to the installation guide included in your product packaging. Online video resources may also be available from the manufacturer to assist with the installation process.

## OPERATING INSTRUCTIONS

---

The AMP Research PowerStepXTreme operates automatically based on your vehicle's door activity.

### Automatic Deployment and Retraction:

- When a vehicle door is opened, the PowerStepXTreme will automatically deploy within approximately one second, extending to a convenient stepping position.
- When all vehicle doors are closed, the PowerStepXTreme will automatically retract and stow itself securely beneath the vehicle, out of sight.

- The integrated LED lighting will illuminate the step area upon deployment, enhancing visibility and safety during entry and exit.

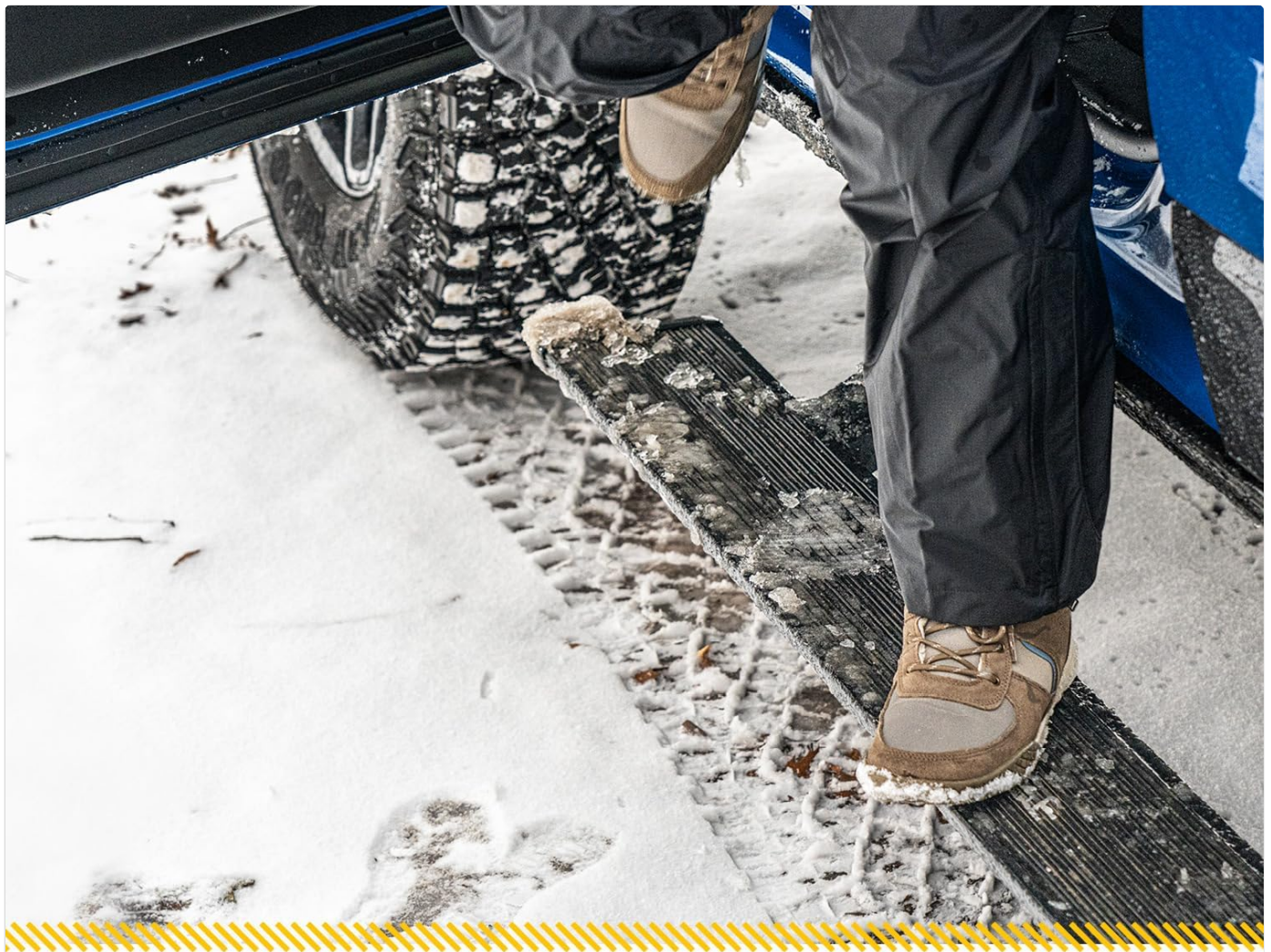
# INNOVATION IN MOTION.

## POWERSTEP™ XTREME



Image: The PowerStepXTreme automatically extends, providing a stable platform for easy entry and exit from the vehicle, even in challenging conditions like snow.





## **POWERSTEP™ XTREME REMARKABLY RUGGED.**

Dual motors that are designed for extreme elements.

Image: A detailed view of the aggressive, textured step design, engineered to provide maximum traction and stability in various weather conditions, including snow and ice.

### **MAINTENANCE**

---

Regular maintenance will ensure the longevity and optimal performance of your PowerStepXTreme system.

- **Cleaning:** Periodically clean the step surfaces and the moving parts of the linkage assembly. Use a mild soap and water solution. Avoid harsh chemicals or abrasive cleaners that could damage the finish.
- **Lubrication:** Apply a silicone-based lubricant to the pivot points of the linkage assembly every few months, especially in dusty, muddy, or corrosive environments. This helps ensure smooth operation and prevents binding.
- **Inspection:** Regularly inspect the mounting hardware, wiring, and step boards for any signs of wear, damage, or looseness. Tighten any loose fasteners.
- **Winter Care:** In sub-zero or snowy conditions, ensure ice and snow are cleared from the steps and linkage area to prevent interference with deployment and retraction. The dual motors are designed for extreme conditions, but obstruction should still be avoided.

### **TROUBLESHOOTING**

---

If you encounter issues with your PowerStepXTreme, consider the following common troubleshooting steps:

- **Steps not deploying/retracting:**

- Check all wiring connections to ensure they are secure and free from corrosion.
- Verify that the vehicle's battery has sufficient charge.
- Inspect the linkage for any obstructions (e.g., mud, ice, debris) that might prevent movement. Clear any obstructions.
- Ensure the vehicle doors are fully opening and closing, as the system is triggered by door sensors.

- **Unusual noises during operation:**

- Apply silicone-based lubricant to the pivot points of the linkage assembly.
- Check for any loose components or foreign objects caught in the mechanism.

- **LED lights not working:**

- Check the wiring connections to the LED lights.
- Inspect the LED strips for physical damage.

If problems persist after attempting these steps, please contact AMP Research customer support for further assistance.

## SPECIFICATIONS

---

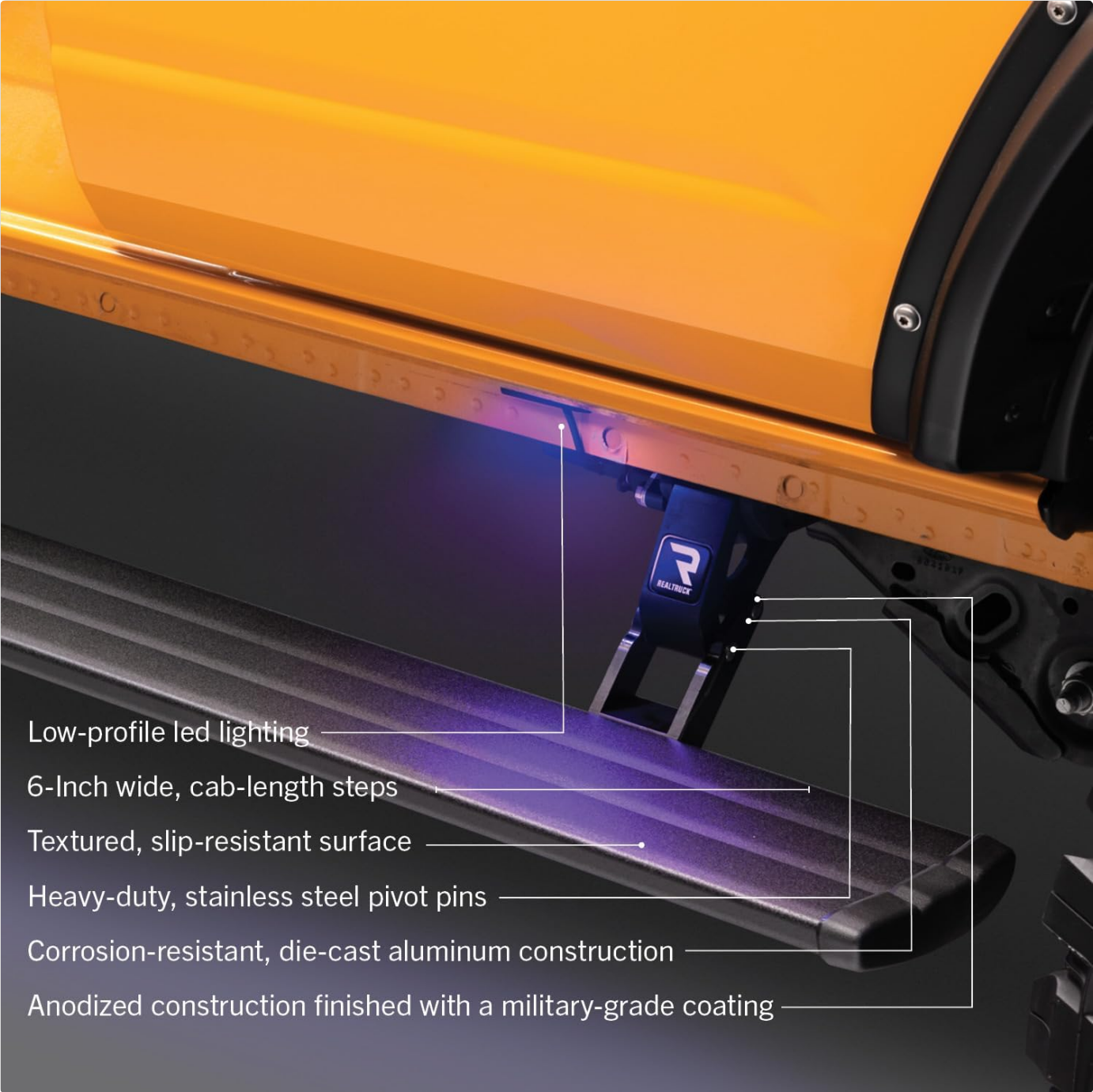


Image: An illustrative diagram showcasing the key features and robust construction of the PowerStepXTreme, including its lighting and material composition.

Feature	Detail
Model Number	78240-01A
Compatibility	2019 - 2024 RAM 1500
Material	Aluminum (Corrosion-resistant, die-cast)
Finish	Anodized with military-grade PTFE coating
Step Width	6 inches (cab-length)
Weight Capacity	600 lbs
Pivot Pins	Heavy-duty stainless steel

Feature	Detail
Lighting	Onboard LED lighting (low-profile)
Item Weight	59 Pounds
Product Dimensions (L x W x H)	81 x 13 x 8 inches
UPC	815410014246

## Warranty Information

AMP Research provides a comprehensive warranty for the PowerStepXTreme system.

- **Duration:** 5-year / 60,000-mile warranty.
- This warranty covers defects in materials and workmanship under normal use. For full terms and conditions, please refer to the warranty documentation included with your product or visit the official AMP Research website.

## Customer Support

For technical assistance, warranty claims, or any questions regarding your AMP Research PowerStepXTreme, please contact AMP Research customer support.

- **Manufacturer:** AMP Research (a RealTruck brand)
- Refer to the product packaging or the official AMP Research website for the most current contact information (phone number, email, or support portal).





© 2024 AMP Research. All rights reserved.  
This manual is for informational purposes only. Specifications are subject to change without notice.

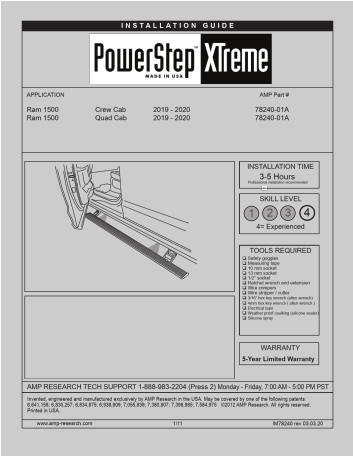
## Related Documents

	<p><a href="#">AMP Research PowerStep Installation Guide for Dodge Ram</a></p> <p>Comprehensive installation guide for AMP Research PowerStep automatic running boards on Dodge Ram trucks (1500, 2500/3500) from 2009-2018, including detailed steps, parts identification, wiring, and warranty information.</p>
	<p><a href="#">AMP Research PowerStep Installation Guide for Dodge Ram</a></p> <p>Comprehensive installation guide for AMP Research PowerStep automatic running boards on Dodge Ram vehicles. Includes application details, parts list, step-by-step instructions, wiring diagrams, operation, maintenance, and warranty information.</p>



	<p><a href="#">AMP Research Power Step XL Installation Guide for Ford F150 (2009-2014)</a></p> <p>This guide provides step-by-step instructions for installing AMP Research Power Step XL electric running boards on a Ford F150 SuperCrew (2009-2014). It includes a comprehensive parts list, required tools, detailed assembly procedures, wiring instructions, and final system checks.</p>
	<p><a href="#">AMP Research PowerStep Installation Guide for Chevrolet Silverado and GMC Sierra</a></p> <p>Detailed installation guide for AMP Research PowerStep running boards on Chevrolet Silverado and GMC Sierra models (2007-2014). Includes parts list, tools required, step-by-step instructions, operation, maintenance, and warranty information.</p>

Documents - AMP Research – 78240-01A

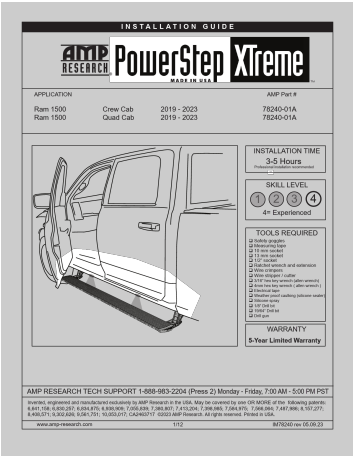


[\[pdf\]](#) Installation Guide Instructions Guide Warranty

53377e955b6c155a1c9df4e4f06602bb uwp static s3 amazonaws assets staging 78240 01A installation instructions |||

INSTALLATION GUIDE APPLICATION Ram 1500 Ram 1500 Crew Cab Quad Cab 2019 - 2020 2019 - 2020 AMP Part # **78240-01A 78240-01A** INSTALLATION TIME 3-5 Hours Professional installation recommended SKILL LEVEL 123 4= Experienced TOOLS REQUIRED q Safety goggles q Measuring tape q 10 mm socket q 13 mm so...

lang:en score:47 filesize: 1.87 M page\_count: 13 document date: 2020-03-03



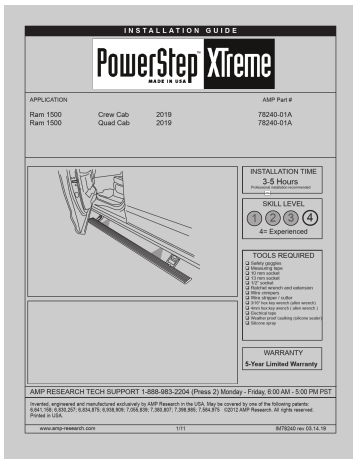
[\[pdf\]](#) Installation Guide Instructions Guide Warranty

358c3062851c14da65150671e0e1af80 uwp static s3 amazonaws assets production installation instructions 78240 01A |||

INSTALLATION GUIDE APPLICATION Ram 1500 Ram 1500 Crew Cab Quad Cab 2019 - 2023 2019 - 2023 TM AMP Part # **78240-01A 78240-01A** INSTALLATION TIME 3-5 Hours Professional installation recommended SKILL LEVEL 123 4= Experienced TOOLS REQUIRED q Safety goggles q Measuring tape q 10 mm socket q 13 m...

lang:en score:47 filesize: 2.96 M page\_count: 14 document date: 2023-05-09



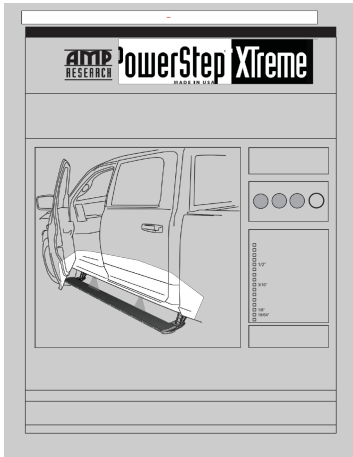


#### [pdf] Installation Guide Guide Warranty

DOWNLOAD INSTALL GUIDE AMP Research PowerStep™ Xtreme 78240 01A Amp Step Store IS v 1713448359 cdn shopify s files 1 0623 4505 2314 |||

INSTALLATION GUIDE APPLICATION Ram 1500 Ram 1500 Crew Cab Quad Cab 2019 2019 AMP Part # **78240-01A 78240-01A** INSTALLATION TIME 3-5 Hours Professional installation recommended SKILL LEVEL 123 4 4= Experienced TOOLS REQUIRED q Safety goggles q Measuring tape q 10 mm socket q 13 mm socket q 1/2 so...

lang:en score:35 filesize: 1.77 M page\_count: 13 document date: 2019-03-14

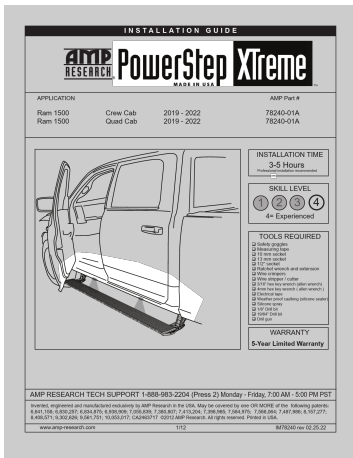


#### [pdf] Installation Guide Instructions Guide Warranty

Chris Aho Running Boards Side Steps Nerf Bars 100480 radco media manuals |||

EXAMPLE OF INSTALLATION INSTRUCTIONS INSTALL VARIES BY VEHICLE INSTALLATION GUIDE APPLICATION Ram 1500 Ram 1500 Crew Cab Quad Cab 2019 - 2022 2019 - 2022 TM AMP Part # **78240-01A 78240-01A** INSTALLATION TIME 3-5 Hours Professional installation recommended SKILL LEVEL 123 4 4= Experienced TOOLS ...

lang:en score:28 filesize: 4.39 M page\_count: 15 document date: 2022-10-25

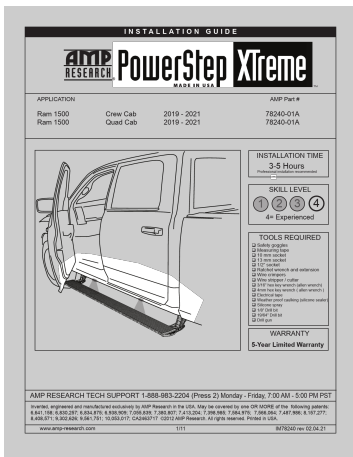


#### [pdf] Installation Guide Guide Warranty

IS 78240 1ddf4b1b856a39e33863 d785dc0e3b62b5e0ef07f55db00b0659 ssl cf2 rackcdn LUND International |||

INSTALLATION GUIDE APPLICATION Ram 1500 Ram 1500 Crew Cab Quad Cab 2019 - 2022 2019 - 2022 TM AMP Part # **78240-01A 78240-01A** INSTALLATION TIME 3-5 Hours Professional installation recommended SKILL LEVEL 123 4 4= Experienced TOOLS REQUIRED q Safety goggles q Measuring tape q 10 mm socket q 13 m...

lang:en score:19 filesize: 2.47 M page\_count: 14 document date: 2022-02-25



#### [pdf] Installation Guide Guide Warranty Catalog

AMPIS 78240 catalograck ImgVD AMP |||

INSTALLATION GUIDE APPLICATION Ram 1500 Ram 1500 Crew Cab Quad Cab 2019 - 2021 2019 - 2021 TM AMP Part # **78240-01A 78240-01A** INSTALLATION TIME 3-5 Hours Professional installation recommended SKILL LEVEL 123 4 4= Experienced TOOLS REQUIRED q Safety goggles q Measuring tape q 10 mm socket q 13 m...

lang:en score:19 filesize: 2.33 M page\_count: 13 document date: 2021-02-04



[\[pdf\]](#) Guide Catalog

AMP Catalog 2019 SP 011819 teamnutztechnology 2020 08

AMERICAN DESIGNED, ENGINEERED AND MANUFACTURED. Contents 4-8 9 10  
11 11 12-13 14-15 16-17 18-19 2 ... ug N Play System; Excludes Diesel Models  
PART # 78154-01A 78254-01A 78154-01A 78239-01A 78239-01A **78240-01A** 78139-  
01A 78239-01A 78151-01A 78234-01A 78235-01A 78154-01A 78254-01A 78154-01A  
78121-01A ...

lang:en score:11 filesize: 33.36 M page\_count: 13 document date: 2019-01-18