

Star Trac 740-6005

H.F Exchange Treadmill Incline Lift Motor Linear Actuator

Model: 740-6005 | Brand: Star Trac

1. INTRODUCTION

This manual provides essential information for the installation, operation, and maintenance of your H.F Exchange Treadmill Incline Lift Motor Linear Actuator. Designed for durability and precision, this component is crucial for adjusting the incline of compatible treadmills, enhancing your workout experience. Please read this manual thoroughly before installation and use to ensure proper function and safety.

2. PRODUCT OVERVIEW

The H.F Exchange Incline Lift Motor Linear Actuator (Part #: 740-6005) is a robust and efficient component engineered to provide seamless incline adjustments for various Star Trac treadmill models. It operates at 120V and is built with high-quality materials such as aluminum and steel, ensuring exceptional durability and strength under rigorous use. Its design focuses on quiet operation and user-friendly integration.

Key Features:

- **Linear Actuator Compatibility:** Specifically designed for easy installation and compatibility with a range of Star Trac treadmill models.
- **Advanced Material Selection:** Crafted from high-quality aluminum and steel for exceptional durability, strength, and resistance to dynamic forces.
- **Motorized Incline Lift System:** Enables seamless adjustment of treadmill incline levels, enhancing workout versatility.
- **Quiet Operation:** Engineered for minimal noise during incline adjustments, contributing to a more comfortable workout environment.
- **Heavy-Duty Design:** Built to withstand rigorous use and provide reliable performance over time.
- **Easy Installation:** Designed for straightforward integration into compatible treadmill systems.



ELEVATION

MOTOR ACTUATOR



Quiet Operation



Safety Features

Hydra Fitness Exchange Provides All Incline Lift Elevation Motor Active

Figure 2.2: Visual representation highlighting durable construction, easy installation, quiet operation, versatile use, compatibility, and safety features of the incline lift motor.

3. COMPATIBILITY

This linear actuator (Part #: 740-6005) is compatible with the following Star Trac treadmill models and J Star models:

- Star Trac S-TR_9-3541_MU SAP0_TRSN_120V
- Star Trac S-TR_9-3543_MU SAP3_TRSN_120V
- Star Trac S-TRc_9-3561_M USAP0_TRSC_110
- Star Trac S-TRc_9-3563_M USAP3_TRSC_110
- Star Trac S-TRx_9-3551_M USAP0_TRSX_110
- Star Trac S-TRx_9-3553_M USAP3_TRSX_110
- J Star Model: is-25-a-n60208L TM19-017 110v S Series S-TRc - 9-3563-MUSAP3

Always verify your treadmill's model or serial number against this list to ensure proper compatibility before installation.

4. SETUP & INSTALLATION

Installation of the incline lift motor linear actuator requires technical knowledge and should ideally be performed by a qualified fitness technician. Incorrect installation can lead to damage to the unit, the treadmill, or personal injury.

General Installation Guidelines:

1. **Safety First:** Always disconnect the treadmill from the power source before beginning any installation or maintenance.
2. **Access the Motor Compartment:** Locate and open the treadmill's motor compartment, typically found at the front of the machine under the motor cover.
3. **Identify the Existing Actuator:** Pinpoint the current incline lift motor. Note its mounting points and electrical connections.
4. **Remove Old Actuator:** Carefully disconnect the wiring and unbolt the old actuator from its mounting brackets.
5. **Install New Actuator:** Position the new H.F Exchange linear actuator in the same location. Secure it using the appropriate bolts and mounting hardware.
6. **Connect Wiring:** Reconnect the electrical wiring to the new actuator, ensuring all connections are secure and match the original configuration. Refer to your treadmill's specific wiring diagram if available.
7. **Test Functionality:** Before reassembling the cover, carefully reconnect power and test the incline function to ensure the new actuator operates smoothly through its full range of motion.
8. **Reassemble:** Once confirmed operational, replace the motor compartment cover and secure it.

For detailed, model-specific instructions, consult your treadmill's original service manual or contact a professional technician.



INCLINE LIFT ELEVATION MOTOR ACTUATOR

Hydra Fitness Exchange Provides All
Incline Lift Elevation Motor Active

Figure 4.1: The incline lift motor actuator installed within a treadmill's motor compartment.

5. OPERATION

The H.F Exchange Incline Lift Motor Linear Actuator functions automatically in conjunction with your treadmill's control console. Once installed, the actuator responds to commands from the treadmill's incline buttons or pre-programmed workout routines to adjust the deck's angle.

- **Incline Adjustment:** Use the dedicated incline controls on your treadmill's console to raise or lower the running deck. The actuator will smoothly move the deck to the desired incline level.
- **Programmed Workouts:** During pre-set workout programs, the actuator will automatically adjust the incline according to the program's specifications, providing varied terrain simulation.

Ensure no obstructions are present under the treadmill deck during incline adjustments to prevent damage to the actuator or the treadmill.

6. MAINTENANCE

Regular maintenance helps ensure the longevity and optimal performance of your incline lift motor linear actuator. While the unit is designed for low maintenance, periodic checks are recommended.

- **Visual Inspection:** Periodically inspect the actuator for any signs of wear, damage, or loose connections. Check the mounting bolts to ensure they are secure.
- **Cleaning:** Keep the area around the actuator clean and free from dust, debris, or lint, which can accumulate and affect performance. Use a soft, dry cloth for cleaning.
- **Lubrication:** The linear actuator is typically pre-lubricated and sealed. Do not attempt to lubricate internal components unless specifically instructed by a qualified technician or the treadmill's service manual.
- **Professional Check:** Consider having a qualified fitness technician inspect your treadmill, including the incline motor, as part of routine equipment maintenance.

Always disconnect power to the treadmill before performing any maintenance.

7. TROUBLESHOOTING

If you experience issues with your treadmill's incline function, refer to the following common troubleshooting steps. For complex issues, contact a qualified technician.

Problem	Possible Cause	Solution
Incline not responding	Loose electrical connection, faulty control console, motor overload, internal actuator fault.	Check all wiring connections to the actuator. Ensure treadmill is powered on. Reset treadmill by unplugging for 60 seconds. If issue persists, professional diagnosis is required.
Incline moves erratically or makes unusual noises	Obstruction, worn gears/components within actuator, motor fault.	Inspect for any obstructions under the deck. Disconnect power and visually inspect the actuator for physical damage. Contact a technician for internal component inspection.
Treadmill displays incline error code	Sensor issue, motor fault, control board issue.	Refer to your treadmill's user manual for specific error code meanings. Often requires professional diagnostic tools.

8. TECHNICAL SPECIFICATIONS

Specification	Value
Part Number	740-6005
Brand	Star Trac (H.F Exchange)
Voltage	120 Volts
Speed	1765 RPM
Horsepower	3 hp
Material	Metal
Item Weight	10 Pounds

Specification	Value
Item Dimensions (LxWxH)	16 x 10 x 6 inches
UPC	081224148228
Date First Available	August 4, 2018

9. WARRANTY INFORMATION

Specific warranty details for the H.F Exchange Treadmill Incline Lift Motor Linear Actuator are typically provided at the point of purchase or by the seller. Please retain your proof of purchase for any warranty claims. Generally, components are covered against manufacturing defects for a specified period. For precise warranty terms and conditions, refer to the documentation included with your purchase or contact the seller directly.


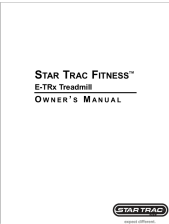
10. CUSTOMER SUPPORT



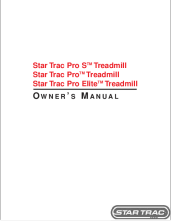

For technical assistance, installation guidance, or troubleshooting beyond the scope of this manual, it is highly recommended to contact a qualified fitness equipment technician. Hydra Fitness Exchange, the seller, can often recommend a qualified technician in your area based on your zip code, ensuring your incline motor operates at peak efficiency.

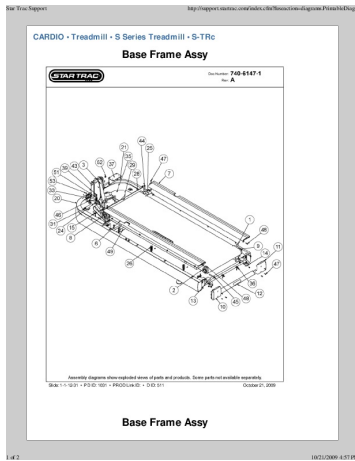
For general inquiries or to find a technician, please refer to the contact information provided by Hydra Fitness Exchange at the time of purchase or through their official channels.

© 2024 H.F Exchange. All rights reserved.

Related Documents - 740-6005

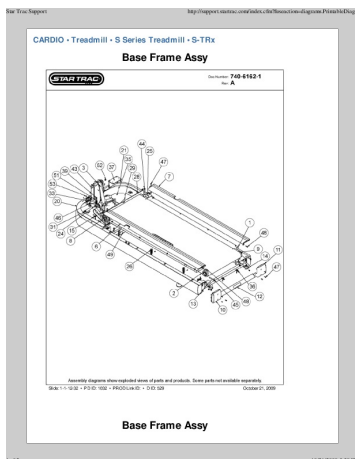
	<p>Core Health & Fitness 10-TRx Freerunner Treadmill Owner's Manual</p> <p>Owner's manual for the Core Health & Fitness 10-TRx Freerunner treadmill, detailing safety instructions, product specifications, operation procedures for OpenHub LCD and touchscreen consoles, workout programs, maintenance schedules, and support services.</p>
	<p>Star Trac E-TRx Treadmill Owner's Manual: Assembly, Operation, and Safety Guide</p> <p>Comprehensive owner's manual for the Star Trac E-TRx Treadmill, detailing assembly, operating instructions, safety precautions, maintenance, troubleshooting, and regulatory information. Includes guidance on exercise tips and training programs.</p>

<p>Star Trac Fitness™ E-TR Treadmill OWNER'S MANUAL</p> 	<p>Star Trac E-TR Treadmill Owner's Manual - Assembly, Operation, and Maintenance Guide</p> <p>Comprehensive owner's manual for the Star Trac E-TR Treadmill, covering assembly, operation, safety instructions, maintenance, and troubleshooting. Learn to use your treadmill effectively and safely.</p>
<p>Star Trac Fitness™ E-TR Treadmill OWNER'S MANUAL</p> 	<p>Star Trac E-TR Treadmill Owner's Manual</p> <p>Comprehensive owner's manual for the Star Trac E-TR Treadmill, covering safety instructions, assembly, operation, maintenance, troubleshooting, and regulatory information.</p>
<p>Star Trac Pro S™ Treadmill Star Trac Pro™ Treadmill Star Trac Pro Elite™ Treadmill OWNER'S MANUAL</p> 	<p>Star Trac Pro S/Pro/Pro Elite Treadmill Owner's Manual</p> <p>Comprehensive owner's manual for the Star Trac Pro S, Pro, and Pro Elite treadmills, covering assembly, operation, safety, maintenance, and troubleshooting for optimal fitness.</p>
	<p>STAR POWER AS01 Treadmill User Manual: Assembly, Operation, and Maintenance</p> <p>Comprehensive user manual for the STAR POWER AS01 Treadmill, covering safety instructions, assembly, operation, maintenance, troubleshooting, and warranty information.</p>



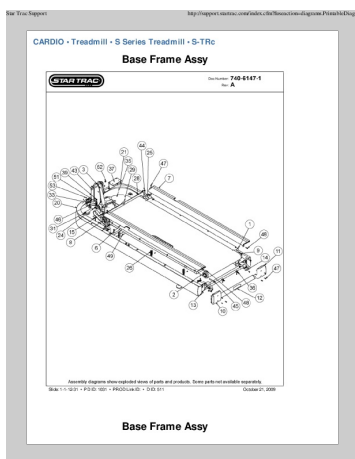
[pdf] Diagram

Star Trac Support mlay Sportsmith1 800 3874 DECK DBL SIDED PRO TREAD 2 130 1708 BELT
 RUNNING WAXLESS TR 3 740 6005 ASSY ELEV MOTOR 110VAC SPORS TRc sn TRSCxxxx xxxxxx
 SKU 9 3562 MUSAP0 startrac treadmill parts diagramsportsmith net images product support Machine
 Diagrams Treadmills s series S diagram |||
 Star Trac Support <http://support.startrac.com/index.cfm>
 fuseaction=diagrams.PrintableDiag... CARDI ... ac.com/index.cfm
 fuseaction=diagrams.PrintableDiag... Callout Part Number: 1 800-3874 2 130-1708 3
740-6005 6 740-6053 7 740-6054 8 740-6055 9 740-6056 10 740-6057 11 740-6058
 12 740-6059 13 740-6060...
 lang:en score:27 filesize: 1.23 M page_count: 22 document date: 2009-10-21



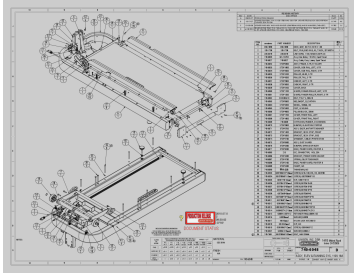
[pdf] Diagram

Star Trac Support mlay Sportsmith1 800 3874 DECK DBL SIDED PRO TREAD 2 740 6174 BELT RUN
 20 W 3 6005 ASSY ELEV MOTOR 110VAC SPORproduct support startrac Machine Diagrams Treadmills
 s series treadmill trx sn trsxxxxxx xxxxx sku 9 3551 musap0 ssportsmith net images product parts
 diagram |||
 Star Trac Support <http://support.startrac.com/index.cfm>
 fuseaction=diagrams.PrintableDiag... CARDI ... ac.com/index.cfm
 fuseaction=diagrams.PrintableDiag... Callout Part Number: 1 800-3874 2 740-6174 3
740-6005 6 740-6053 7 740-6054 8 740-6055 9 740-6056 10 740-6057 11 740-6058
 12 740-6059 13 740-6060...
 lang:en score:22 filesize: 994.35 K page_count: 18 document date: 2009-10-21



[pdf] Diagram

Star Trac Support mlay CARDIO Treadmill S Series TRc Display Panel Assy With Electronic Board
 Callout Part Number Description 1 715 3518 KT KIT CABLE POLAR RECEIVER PRO 2 740 0015 CHIP
 CHR SALUTRON 4000LX 3 6001 ASSY DISPLAY CLUB COMP SPOR 4 6051 KEYPAD AND VEZEL
 TRC 5 6207 CONN FITLINX 6 6521 SCREW GB818M4*8 7 6094 *ALT* USE Parts are subject to
 availability sn TRSCxxxx xxxxxx sku 9 3563 musapo startrac treadmill parts diagram sportsmith net
 images product support Machine Diagrams Treadmills s series |||
 Star Trac Support <http://support.startrac.com/index.cfm>
 fuseaction=diagrams.PrintableDiag... CARDI ... ac.com/index.cfm
 fuseaction=diagrams.PrintableDiag... Callout Part Number: 1 800-3874 2 130-1708 3
740-6005 6 740-6053 7 740-6054 8 740-6055 9 740-6056 10 740-6057 11 740-6058
 12 740-6059 13 740-6060...
 lang:en score:21 filesize: 1.24 M page_count: 22 document date: 2009-10-21



[pdf]

740 6048D STARTRAC sneill FIENG044 6048 D Core Health and Fitness 19 2 40 38 4 18 41 20 52 6 1
28 24 17 50 49 47 29 33 3 54 42 5 23 35 31 56 8 d 55 7 22 21 11 13 12 43 support corehandf Brands

StarTrac Drawings |||

10 9 43 J 39 1 1 51 1 53 2 34 1 21 I 1 46 1 32 1 25 1 16 H 19 1 G F E D C B ... 2 18 52

6 20 2 47 41 29 D 4 50 2 8 7 ITEM NO. 1 2 3 4 5 vendorno 050-1898 130-1708 220-

0278 **740-6005** 740-6027 PART NUMBER DESCRIPTION 050-1898 DECK, MDF,
53.75 X 25.70 X 1.00 / QTY. 1 13...

lang:i-klngon **score:15** filesize: 463.91 K page_count: 1 document date: 2010-07-02