



[Manuals.plus](#) /

› [Eurmax](#) /

› Eurmax USA 10x10 Pop-Up Canopy Tent Instruction Manual

## Eurmax 10X10

# Eurmax USA 10x10 Pop-Up Canopy Tent Instruction Manual

Model: 10x10 Pop-Up Canopy Tent

## INTRODUCTION

---

This manual provides instructions for the safe and efficient setup, operation, and maintenance of your Eurmax USA 10x10 Pop-Up Canopy Tent. Please read all instructions carefully before use.

## PACKAGE CONTENTS

---

Verify that all components are present before beginning assembly:

- 1x 10Ft Commercial Canopy Frame
- 1x 10Ft Pop-Up Canopy Top
- 3x 10Ft Sidewalls
- 1x 10Ft Middle Door Wall
- 1x Roller Bag
- 4x Weight Bags (sand not included)
- 1x 10Ft Upgrade Awning



Figure 1: All components included in the package.

## SETUP INSTRUCTIONS

The Eurmax 10x10 Pop-Up Canopy is designed for quick and easy assembly. It is recommended that two people set up the canopy for optimal ease and safety.

1. **Unpack the Frame:** Remove the folded frame from the roller bag. Place the frame in the desired setup location.



Figure 2: Extend the pre-assembled frame.

2. **Extend the Frame:** With a person at each end, gently pull the frame outwards until it is partially extended.
3. **Attach Canopy Top:** Place the canopy top over the partially extended frame. Secure the corners of the canopy top to the frame using the integrated Velcro straps.

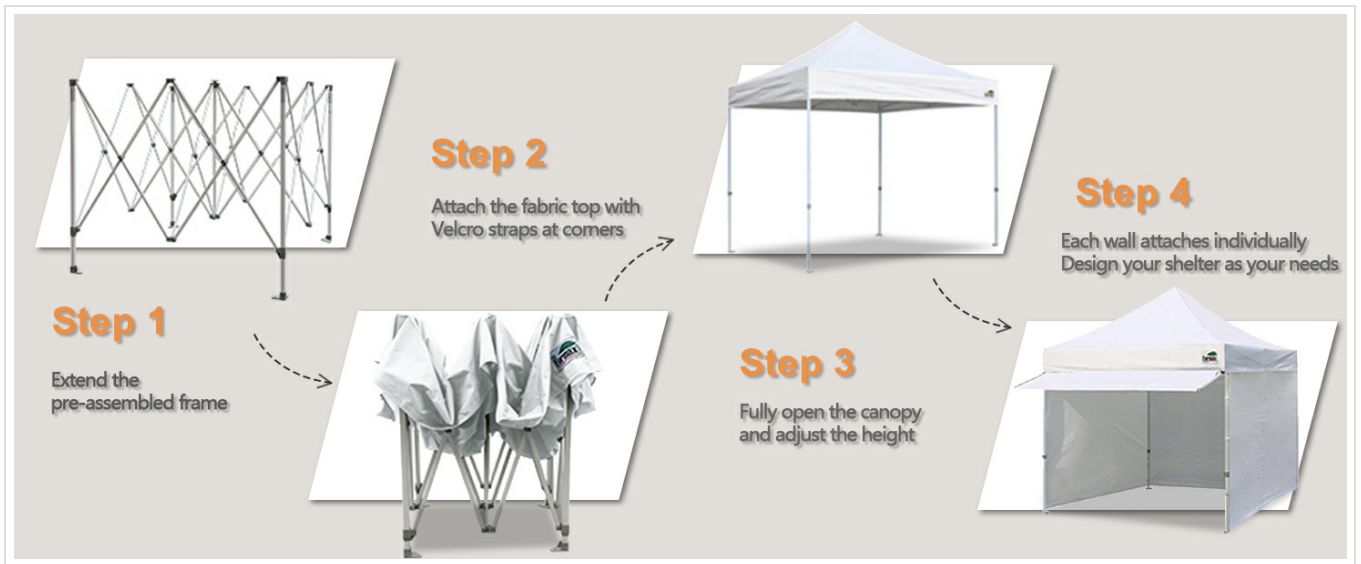


Figure 3: Attach the canopy top to the frame.

- Fully Open the Canopy:** Continue extending the frame until it is fully open. Engage the thumb lock system on each leg to secure the frame in place.

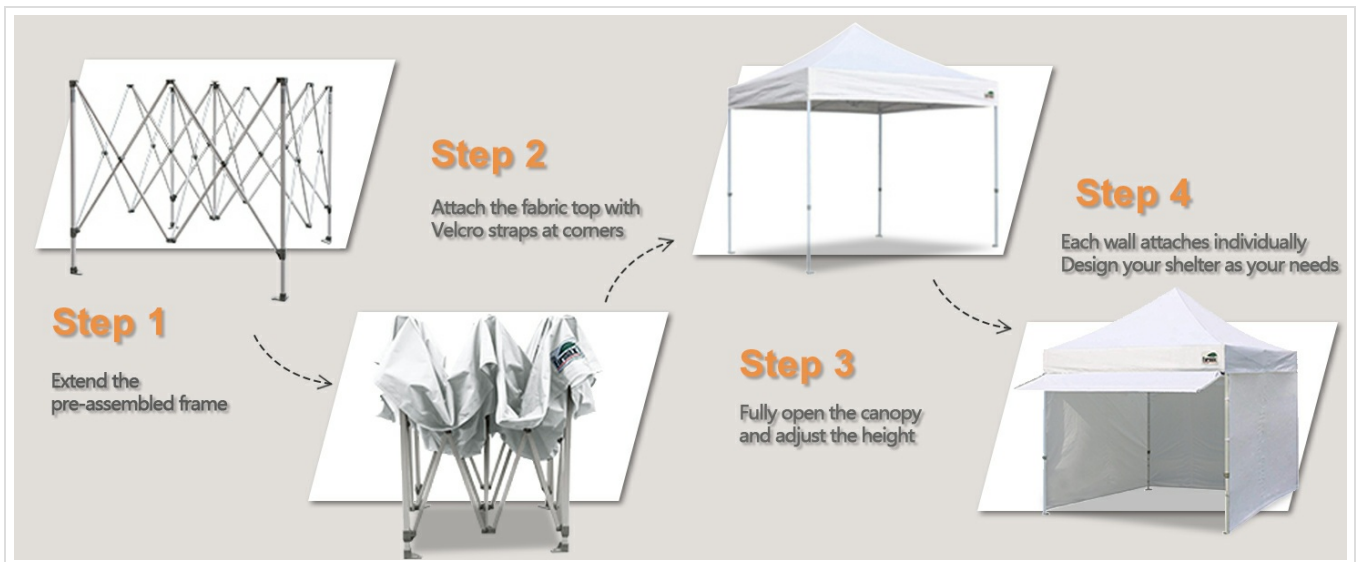


Figure 4: Fully open the canopy.

- Adjust Height:** Use the thumb button height adjusters on each leg to set the desired clearance height (10.5ft to 11.1ft). Ensure all legs are locked at the same height.



Figure 5: Adjusting the canopy height using the thumb button.

6. **Attach Sidewalls (Optional):** If using sidewalls, attach them individually using the Velcro strips along the top edge of the frame and the loops around the poles. The middle door wall features a zipper for entry/exit.

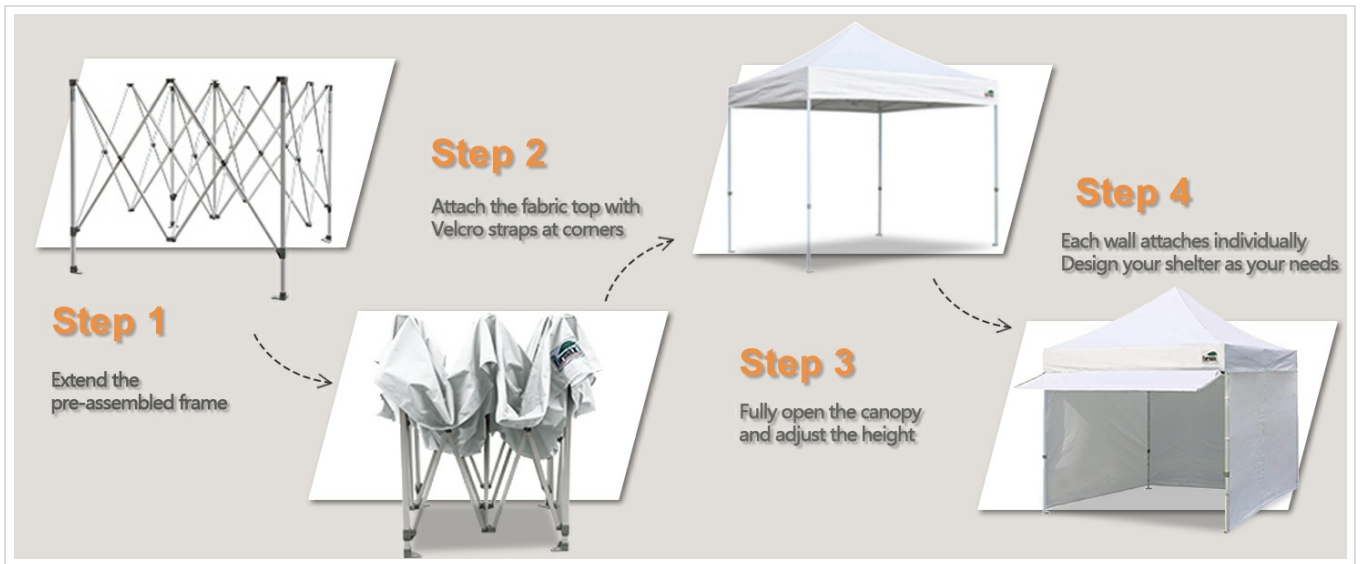


Figure 6: Attaching the sidewalls.

7. **Secure with Weight Bags:** Fill the provided weight bags with sand and attach them to the canopy legs for added stability, especially in windy conditions.



Figure 7: Weight bags for securing the canopy.

8. **Install Extended Awning (Optional):** Connect the awning pole to the canopy frame hole and secure the awning to the canopy top using Velcro.



Figure 8: Steps for installing the extended awning.

## OPERATING INSTRUCTIONS

---

The Eurmax canopy is designed for temporary outdoor use.

- Ensure the canopy is always properly anchored with weight bags or stakes, especially in windy conditions.
- Do not use the canopy in severe weather conditions, including heavy rain, strong winds, or lightning.
- The canopy fabric is designed to block 99% of UV rays and is water-resistant. However, prolonged exposure to heavy rain may lead to water accumulation.
- The fabric is CPAI-84 fire retardant certified. However, keep all heat sources away from the canopy fabric.

## MAINTENANCE

---

- Clean the canopy fabric with mild soap and water. Do not use harsh chemicals or abrasive cleaners.
- Ensure the canopy top and sidewalls are completely dry before folding and storing to prevent mold and mildew.
- Inspect the frame for any damage or loose parts before and after each use.
- Store the canopy in its roller bag in a cool, dry place when not in use.

## TROUBLESHOOTING

---

| Problem                        | Solution  |
|--------------------------------|---|
| Canopy difficult to open/close | Ensure the frame joints are clean and free of debris. Lubricate moving parts if necessary. Ensure two people are assisting with setup/takedown. |
| Water pooling on canopy top    | Adjust the height settings to ensure the canopy top is taut and water can run off. Do not use in heavy rain.                                    |
| Canopy unstable in wind        | Always use the provided weight bags (filled with sand) and stakes to secure the canopy legs. Do not use in strong winds.                        |

## SPECIFICATIONS

---

- **Brand:** Eurmax
- **Material:** Alloy Steel (Frame), CPAI-84 Fire Retardant Certified, PU Coated Fabric (Canopy)
- **Product Dimensions:** 120"L x 120"W x 133.2"H (10ft x 10ft x 11.1ft max height)
- **Item Weight:** 60 Pounds
- **Water Resistance Level:** Water Resistant
- **Ultraviolet Light Protection:** True (Blocks 99% UV rays)
- **Assembly Required:** Yes

## WARRANTY AND SUPPORT

---

The Eurmax USA 10x10 Pop-Up Canopy Tent comes with a **1-year manufacturer warranty**. For warranty claims, replacement parts, or technical support, please contact Eurmax USA directly.

You can visit the official Eurmax store on Amazon for more information: [Eurmax Store](#).

