

[manuals.plus](#) /

› [INVERY](#) /

› [DockLinQ Pro Bluetooth 5.0 Adapter Receiver for Bose Sounddock and 30 pin iPod iPhone Music Docking Station\(Not for Cars\)](#)

INVERY DockLinQ Pro

DockLinQ Pro Bluetooth 5.0 Adapter Receiver

Model: DockLinQ Pro | Brand: INVERY

INTRODUCTION

The INVERY DockLinQ Pro is a Bluetooth 5.0 adapter receiver designed to upgrade your existing 30-pin iPod/iPhone music docking stations, such as various Bose SoundDock models, to wireless Bluetooth functionality. This device allows you to stream audio wirelessly from any Bluetooth-enabled smartphone, tablet, or other device to your legacy docking station, giving new life to your audio equipment. It also features a 3.5mm auxiliary jack for broader compatibility with home audio systems.



Figure 1: Front view of the DockLinQ Pro Bluetooth Adapter, showcasing its compact design and 30-pin connector.

PACKAGE CONTENTS

Please verify that all items listed below are present in your package:

- DockLinQ Pro Bluetooth Adapter
- 3.5mm Audio Cable
- User Guide (this manual)



Figure 2: Front view of the DockLinQ Pro retail packaging.

PRODUCT OVERVIEW

The DockLinQ Pro features a robust aluminum shell design for durability. It integrates a powerful Bluetooth 5.0 chipset for stable and efficient wireless audio streaming. Key components include:

- **30-pin Interface:** For direct connection to compatible docking stations.
- **Power ON/OFF Button:** Controls the device's power state.
- **Indicator Light:** Provides visual feedback on power and pairing status.
- **3.5mm AUX Jack:** Allows connection to audio systems via an auxiliary cable.

Robust Aluminium Shell Design

Powerful Bluetooth 5.0 Chipset



Figure 3: Detailed diagram illustrating the various components and features of the DockLinQ Pro adapter.

SETUP

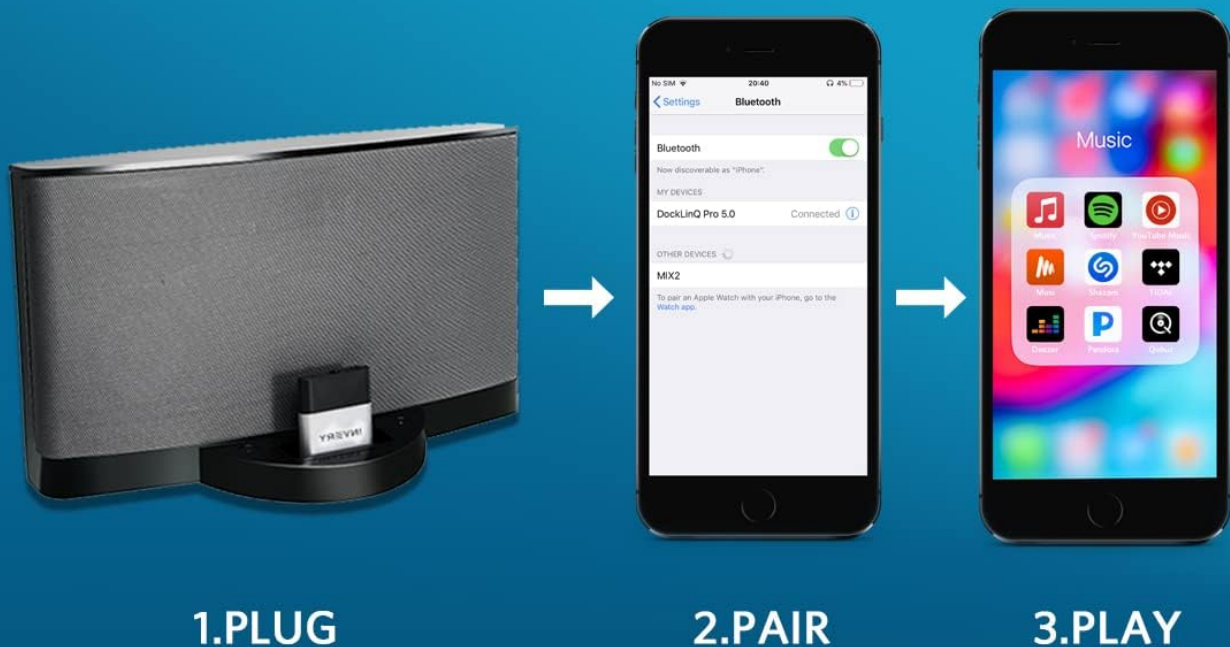
Connecting to a 30-pin Docking Station:

1. **Plug In:** Insert the DockLinQ Pro adapter firmly into the 30-pin connector of your docking station. Ensure the docking station is powered on. The adapter will power on automatically.

2. **Pair:** The indicator light on the DockLinQ Pro will begin to flash, indicating it is in pairing mode. On your mobile device (smartphone, tablet, etc.), navigate to your Bluetooth settings. Locate and select "DockLinQ Pro" from the list of available devices to pair.
3. **Play:** Once successfully paired, the indicator light will become solid. You can now play audio from your device, and it will stream wirelessly through your docking station.

Plug Pair Play

Easy Plug, Fast Bluetooth Pairing, Play Music Wirelessly



- Stream music or audio from any of your favorite apps including Spotify, Youtube, Pandora, Deezer, Amazon music, Apple music Audible etc
- Supports any version of iOS and Andriod devices including iPhone iPad, Samsung, LG, HTC, Nokia, Google Pixel etc.

Figure 4: Visual guide for the plug, pair, and play setup process with a docking station.

Connecting via 3.5mm AUX Jack:

For audio systems without a 30-pin dock, the DockLinQ Pro can be used with its built-in 3.5mm AUX jack.

1. Connect one end of the provided 3.5mm audio cable to the AUX jack on the DockLinQ Pro.
2. Connect the other end of the 3.5mm audio cable to the auxiliary input of your home audio system or boombox.
3. Power on the DockLinQ Pro and pair it with your mobile device as described in the "Connecting to a 30-pin Docking Station" section.

Pairing with Amazon Echo Dot:

The DockLinQ Pro can be paired with an Amazon Echo Dot for voice-controlled music streaming.

1. Open the Alexa app on your smartphone or tablet.
2. Navigate to the Bluetooth settings within the Alexa app.
3. Pair your Echo Dot with the DockLinQ Pro.
4. Once connected, you can use voice commands through your Echo Dot to play music, which will then be outputted through the docking station connected to the DockLinQ Pro.

Work with Amazon Echo Dot

1. Open Alexa App to find bluetooth settings
2. Pair Echo Dot Alexa with DockLinQ
3. Tell Echo Dot to play music
4. The music will come out from docking station via DockLinQ



Figure 5: Setup for integrating DockLinQ Pro with an Amazon Echo Dot for voice control.

OPERATION

Music Streaming:

After successful pairing, you can stream music or audio from any of your favorite applications on your mobile device, including but not limited to Spotify, YouTube, Pandora, Deezer, Amazon Music, Apple Music, and Audible. The DockLinQ

Pro supports any version of iOS and Android devices, including iPhone, iPad, Samsung Galaxy, Google Pixel, LG, and HTC.

Dual Device Pairing:

The DockLinQ Pro supports simultaneous pairing with two devices. This allows you to seamlessly switch between audio sources from two different mobile devices (e.g., an iPhone and an iPad) without needing to re-pair each time.

COMPATIBILITY

The DockLinQ Pro is designed for specific 30-pin docking stations. Please review the following tables carefully to determine if your docking station is compatible or incompatible before use.

Compatible Docks:

The DockLinQ Pro is compatible with a wide range of 30-pin music docking stations, including Original Bose SoundDock, Bose SoundDock I, SoundDock II, Portable SoundDock, and SoundDock 10. For a comprehensive list, refer to the image below.

Docks NOT Compatible with DockLinQ

DockLinQ NOT work with AUDI, MERCEDES, BMW, INFINITI

| Manufacturers | Models NOT compatible with DockLinQ | Manufacturers | Models NOT compatible with DockLinQ |
|----------------------|--|---------------|---|
| Altec Lansing | M602, IMT630 (DockLinQ too thick), IMT810 | Philips | AJ32700/17, DCM5090/10, DCM580, Fidelio DS9000, DS9, DS9/37, DS8550, DS8530, DS8500 |
| Anthem | MRX500 | Pioneer | STZ-D10Z, X-EM21, XW • NAS3, XW- NAV1-K |
| Bang & Olufsen | BeoPlay A8, BeoSound 8 | Polk | MiDock Studio |
| Bose | Lifestyle V25z Lifestyle V35, Wave III Dock with Bose Link Cable | Pyle | PSBMGOi, Tower 2.1 |
| Bowers & Wilkins | Zeppelin, Zeppelin, Air, Zeppelin Mini | Russound | BGK-1 iBridge |
| Brookstone | iPod Stereo Dock PS236A, iDesign Powerspeaker | Samsung | All models of Home Theater and/or Blu-Ray devices |
| Cambridge Audio | iD100 | Sangean | WR-5 |
| Channel Vision | iBus A-0314, iBus AB-313 Whole House Audio | Pure | i20 |
| Denon | ASD-RR ASD-51W, DSD-500 | Sharp | GX-M10 |
| Directed Electronics | Soloist Universal Sound System | Sony | AIR-SA15Ti, AIR-SA20PK, BDV-E300, BDV-E500W, BDV-T10, BDV-T11, BRAVIA Home Theater System, CMT-BX20i, CMT-CX4iPzCMT-FX300iz CMT-LX20i, CMT-LX30iRf CMT-MX500i, CMT-MX550i, CMT-V50iPz DAV-DHX576WF, DAV-HDX589W, DAV-HDX285, DAV-HDZ273, EZW-RT10 Airplay, Digital Media Port Cradle TDM-iPiO, HCD-BX20L HCD-LX201, HCD-MX500L HT-SS380, ICF-CD3iPz ICF-CL75iP, ICF-CS15iP, LBT-ZX66L MHC-EC6% MHC-EC609iP, MHC-EC709iP, MHC-EC909iP, NAS-SV20i, RDH-GTK33iP, RDH-SK8iP, RDP-X200iP, RDP-X500iPr RDP-X50iP, RDP-X60iP, TDM-iPi0fTDM-iP20zTDM-iP50, XDR-S10hdiPz S-AirPlay, S-Air Wireless, SS • SLK2i, NAC-SV 10i, CDXM50iP |
| DLO | HomeDock for iPod | TEAC | DS-H01 |
| Geneva | Sound System Model S | Vers | 2X iPod Sound System |
| Harman Kardon | AVR3600 | Wadia | 170i Transport iPod Dock |
| iHome | iDN38, iP49, iH52, iHL64, iP3, iP71 | Yamaha | CRX-040, CRX-300, CRX-330, CRX-332, MCR-040, MCR-042, PDX-50, RX-V2700, RX-V667ZTSX-132, YDS-10, YDS-11 Dock for Home Theater Receivers, YDS-12 Dock for Home Theater Receivers, YSP-4100zTSX-140, ISX-800 |
| iLive | IS208BJH3198BJHH810B Home Theater System | | |
| JVC | ux-vj5 | | |
| Kenwood | KMR-700U Marine USB/iPod Receiver | | |
| Kicker | iK501 | | |
| Klipsch | iFi speaker system, Model i200 | | |
| Lanchiya | iPup | | |
| LG | LHB953 Network Blu-Ray Disc Home Theater System | | |
| Logitech | Pure Fi Express Plus S-00067 | | |
| Onkyo | CR-445, CR-545, CS-345 CD HiFi Mini, Lunar 350, HT-R580, HT-6305, SBX-300, TX-Sr508zUP-A1 | | |
| Panasonic | SA-BT30, SA-BT200, SA-PM500, SA-PT670, SA-PT750, SA-PT950, SA-PT960, SC-BTT370, SC-HC20, SC-HC25, SC-HC30, SC-HC35, SC-HC37, SCHC271, SC-57, DVD | | |

Figure 6: List of docking stations confirmed to be compatible with the DockLinQ Pro.

Incompatible Docks and Systems:

The DockLinQ Pro is **not compatible** with all docks, especially certain car docks and specific home audio systems. It does not work with Audi, VW, Mercedes, BMW, or Infiniti/Nissan car systems. Please consult the image below for a list of known incompatible models and manufacturers.

Docks Compatible with DockLinQ

Supports any iOS and Andriod devices including iPhone,iPad,Samsung,Ig,Google Pixel

| Manufacturers | Models compatible with DockLinQ | Manufacturers | Models compatible with DockLinQ |
|----------------------|--|---------------------|--|
| Alesis | MultiMix8 | Kicker | iK5 |
| Altec Lansing | iM7, iM9, iM11, iM600, iMT325, iMT620, iMT702JMT800, M202, M402, T612 | Klipsch | iGroove iPod Dock models 1000330 and 1001092, iGroove HG1006819, iGroove SXT1007267, iGroove SXT1008329, iGroove SXT1009098 |
| Arcam | rCube Portable Speaker | | |
| Apple | iPod Hi-Fi | | |
| Beats by Dr Dre | Beat by Dr. Dre, Beatbox | Logic3 | JiveBox |
| Bose | Original SoundDock for iPod, SoundDock Portable, SoundDock I, SoundDock II, Sound Dock 10, Wave System III and II with Connect Kit for iPod, | Logitech | MM50, Audio Station S-0217A, S135i, S315i, S715i, Pure Fi Anywhere 2, Pure Fi Anywhere S-0001 |
| Boston Acoustics | Duo-i Plus | Merkury Innovations | MI-CR5010 |
| Brookstone | BoomBox for iPod 623405, BoomBucket | Memorex | MA2213, MA9010MS, MI3005 iMove, MiHTS302,M2290 |
| Cambridge Soundworks | 745i,765i,8046 | Monster | Tron IPD-DKEFS |
| Creative Labs | D160 | Marantz | IS201dock |
| Crosley | 1701AiJuke | Onkyo | DS-A3,DS-A4 |
| Cyber Acoustics | CA461 | Panasonic | SA-BT100 |
| DLO | HomeDock for iPod, HomeDock Deluxe | Philips | AJ7030, AJ7035, AJ7040D, DC320/37, DC390/37, DCB291, DCB293, DCB352, DCD132, DCM2020, DCM230/37, DS1100, DS1110, DS1200, DS3000, DS3010/37, DS3510, DS7550, DS7700 |
| Fatman | iTube Dock | | |
| Fluance Focal | FiSDK500 xs 2.1 | | |
| Geneva | Sound System Model L | Polk Audio | HD Radio I-Sonic, Midock Studio, MiDock 10 |
| Griffin Technology | Amplifi 2.1 model 1200-ITSPKR, Evolve | Pyle | Home PiDock1 |
| Harmon Kardon | Go + Play, Go + Play II | Samson | Expedition XP40i |
| iCraig | CHT907, CHT910, CHT917, CMB3209 Alarm Clock | Samsung | HW-C700 with iPod dock |
| iDeck | Integrated Car Cassette for iPod | Sharper Image | SA255JTowerSM252 |
| iHome | iA9, iA 5, iA17, iA63, iA100, iD37, iD7, iD8, iD91, iD99, iH16U, iH4, iH5, iH6, iH8, iH9, iH15, iH19 (2Go), iH27, iPi, iP2, iP4, iP9, iP11, iP16, iP21, iP23, iP37, iP46, iP87, iP90, iP97 | Skullcandy | Skull Candy pipe, Vandal S7LACZ-04 |
| | | Soundfreaq | SFQ-01 |
| iLive | IB289JBPD882B CD/DVD/iPhone Boombox, iHS3, ISP389, IS608, ITP100B | Sony | AIR-SW10Ti, CPF-iPOOIP, ICFTiP, ICF-7iP, ICF-C05iP, ICF-C1iPMK2, ICF-CSiOiP, RDH-GTK1i, RDP-M15iP, RDP-M5iP, RDP-V20iP, RDP-X30iP, RDP-XFIOiP, RM-AMU009, SRS-GUIOiP, ZS-S2iP, ZS-S4iP, Marine Stereo CDX-H905ip |
| iLuv | iMM747J9200JWIN | | |
| ION | Block Rocker | Speakal | iPig |
| iPort | IW-20 | TEAC | CD-X10i,SR-L250iB,SR-LX5i |
| iTec | T2406 iStereo | Tivoli | Audio iSongBook, iYiYi |
| JBL | MR 17 Marine Stereo, Onstage 2, On Stage 3, On Stage 4, On Stage 200iD, On stage Micro, On Beat, On Time 200P,On Time Micro, Radial Micro 700 | Vers | 2X |
| JVC | RD-N1, Boomblaster RV-NB70B, Kaboom RV-B50 | Yamaha | MCR-230, PDX-11, PDX-30, PDX-31, PDX-60,E810,TSX-70zTSX-130 |

Figure 7: List of docking stations and car systems known to be incompatible with the DockLinQ Pro.

MAINTENANCE

The DockLinQ Pro requires minimal maintenance. To ensure optimal performance and longevity:

- Keep the device clean and free from dust. Use a soft, dry cloth to wipe the exterior.
- Avoid exposing the device to extreme temperatures, humidity, or direct sunlight.
- Do not attempt to disassemble or modify the device, as this will void the warranty and may cause damage.
- Handle the 30-pin connector with care to prevent bending or damage to the pins.

TROUBLESHOOTING

If you encounter issues with your DockLinQ Pro, please refer to the following common troubleshooting steps:

| Problem | Possible Cause | Solution |
|---|---|--|
| No power/Indicator light off. | Docking station not powered or adapter not fully inserted. | Ensure the docking station is powered on. Re-insert the DockLinQ Pro firmly into the 30-pin connector. |
| Cannot pair with mobile device. | Device not in pairing mode; Bluetooth interference; previously paired device connected. | Ensure the indicator light is flashing (pairing mode). Turn off Bluetooth on other nearby devices. Forget "DockLinQ Pro" from your device's Bluetooth list and try pairing again. |
| No sound after pairing. | Volume too low; incorrect input selected on docking station; incompatible dock. | Increase volume on both your mobile device and the docking station. Ensure the docking station is set to the correct input (e.g., iPod/Aux). Verify your dock is listed as compatible in the "Compatibility" section. |
| Audio quality issues (e.g., static, drops). | Distance from device; interference; low battery on mobile device. | Reduce the distance between your mobile device and the DockLinQ Pro (optimal range is 70 feet in open air). Move away from other wireless devices (Wi-Fi routers, microwaves). Ensure your mobile device has sufficient battery. |

SPECIFICATIONS

| Feature | Detail |
|--------------------------------|---------------------------|
| Model Number | DockLinQ Pro |
| Bluetooth Version | 5.0 |
| Connector Type | 30-pin, 3.5mm AUX |
| Product Dimensions (L x W x H) | 1.77 x 1.77 x 0.39 inches |
| Item Weight | 0.811 ounces |
| Compatible Devices | iOS and Android devices |
| Manufacturer | INVERY |


WARRANTY AND SUPPORT




For warranty information or technical support, please contact INVERY directly. Refer to the contact details provided on the product packaging or the official INVERY website. Keep your purchase receipt as proof of purchase for any warranty claims.



Figure 8: Back of the DockLinQ Pro packaging, which includes manufacturer details for support.

Related Documents - DockLinQ Pro

| | |
|---|--|
|  | <p>Invery DockLinQ User Manual: Bluetooth Audio Streaming for 30-Pin Docks</p> <p>User manual for the Invery DockLinQ, a device that adds Bluetooth audio streaming capabilities to 30-pin iPod/iPhone docking stations. Learn how to set up, pair, and play music from various devices.</p> |
|---|--|

| | |
|---|--|
|  | <p><u>INVERY Airdual Bluetooth Adapter User Manual & Setup Guide</u></p> <p>Comprehensive user manual for the INVERY Airdual Bluetooth adapter (Model Airdual-300A). Learn how to connect, pair, and use its features with your car's audio system, including troubleshooting tips.</p> |
|  | <p><u>Pyle PT270AIU 300 Watt Stereo Receiver User Manual</u></p> <p>Comprehensive user manual for the Pyle PT270AIU 300 Watt Stereo Receiver, detailing features, operation, safety instructions, and remote control functions for this hybrid amplifier with iPod docking, AM/FM tuner, USB/SD card readers, and subwoofer control.</p> |
|  | <p><u>BlueBuilt DisplayLink Docking Station Pro with USB-C - User Guide and Specifications</u></p> <p>Detailed information on the BlueBuilt DisplayLink Docking Station Pro with USB-C, including product overview, connection instructions, port explanations, safety guidelines, and technical specifications.</p> |