

[Manuals.plus](#) /

› [Mo Cuishle](#) /

› Mo Cuishle Shiatsu Back Shoulder and Neck Massager User Manual

Mo Cuishle MO-BLT-010

Mo Cuishle Shiatsu Back Shoulder and Neck Massager User Manual

Brand: Mo Cuishle | Model: MO-BLT-010
Electric Deep Tissue 4D Kneading Massage with Heat

INTRODUCTION

The Mo Cuishle Shiatsu Back Shoulder and Neck Massager is designed to provide deep tissue massage and soothing heat to alleviate muscle tension and stress. Inspired by Shiatsu and Japanese massage techniques, its 4D rotating nodes offer customized relief for various body parts.

- **8 Deep Tissue Kneading Nodes:** Provides deep massage to tissues and muscles, offering a soothing and relaxing experience.
- **Advanced Heating:** Infrared heating helps ease muscle tension, improve blood circulation, and relieve aches and cramps.
- **Adjustable Speed and Direction:** Three adjustable speeds (slow, medium, fast) and a direction control button for personalized massage. Automatic direction change every minute.
- **Versatile Use:** Portable design with home power adapter and car charger for use in office, car, or home.
- **Automatic Shut-off:** Device automatically shuts off after 15 minutes for safety.

SAFETY INFORMATION

Please read all instructions carefully before using the massager. Improper use may result in injury or damage. This device is intended for personal, non-medical use only.

- Do not use while driving.
- Ensure the device is properly plugged into a suitable power outlet.
- Avoid prolonged use on a single area to prevent overheating or discomfort.

- Consult a physician before use if you have pre-existing medical conditions, are pregnant, or have sensitive skin.
- Keep out of reach of children.
- Do not disassemble or attempt to repair the device yourself.

PACKAGE CONTENTS

Verify that all items are present and in good condition upon unboxing:

- 1 x Mo Cuishle Shiatsu Back Shoulder and Neck Massager
- 1 x Home Power Adapter
- 1 x Car Charger
- 1 x User Manual

Product details

Fine workmanship and fine materials



Image: The massager, home power adapter, car charger, and user manual neatly packaged in its box.

PRODUCT OVERVIEW

Familiarize yourself with the main components and controls of your massager.



Image: Front view of the massager, highlighting its ergonomic design and integrated control panel.

Control Panel



Image: Detailed view of the control panel, showing the power, direction, intensity, and heat buttons.

- **Power Button:** Turns the massager ON/OFF.
- **Direction Button:** Changes the rotation direction of the massage nodes.
- **Intensity Button:** Adjusts the massage speed (slow, medium, fast).
- **Heat Button:** Activates or deactivates the infrared heating function.

SETUP

Before first use, ensure the massager is connected to a power source.

1. Unpack the massager and all accessories from the box.
2. Connect the power adapter to the massager's input port.
3. Plug the power adapter into a standard electrical outlet. For in-car use, connect the car charger to the massager

and then to your vehicle's 12V outlet.



Image: The massager with its power cord connected, demonstrating readiness for operation.

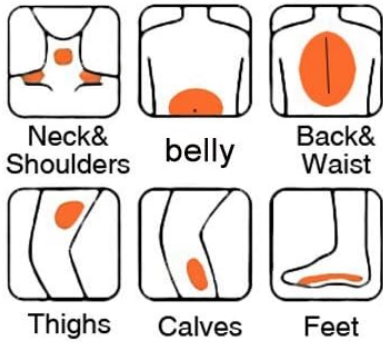
OPERATING INSTRUCTIONS

Follow these steps to operate your Mo Cuishle massager:

1. Place the massager on the desired body area (neck, shoulders, back, waist, thighs, calves, feet).
2. Press the **Power Button** to turn on the massager. The massage nodes will begin rotating.
3. To change the rotation direction, press the **Direction Button**. The massager will also automatically change direction every minute.
4. Adjust the massage intensity by pressing the **Intensity Button**. Cycle through slow, medium, and fast speeds.
5. To activate the heating function, press the **Heat Button**. The massage nodes will illuminate red, indicating heat is active. Press again to turn off heat.

6. For optimal pressure, utilize the arm straps to gently pull the massager closer to your body.
7. The massager will automatically shut off after 15 minutes of continuous use.

Family “massage doctor”



8 Shiatsu kneading nodes work both clockwise and counter clockwise for a thorough massage.



Provide 3 adjustable positions in slow, medium and high personalized comfort



Deep therapeutic heat relieves aching muscles and assists in soothing oncoming headaches.

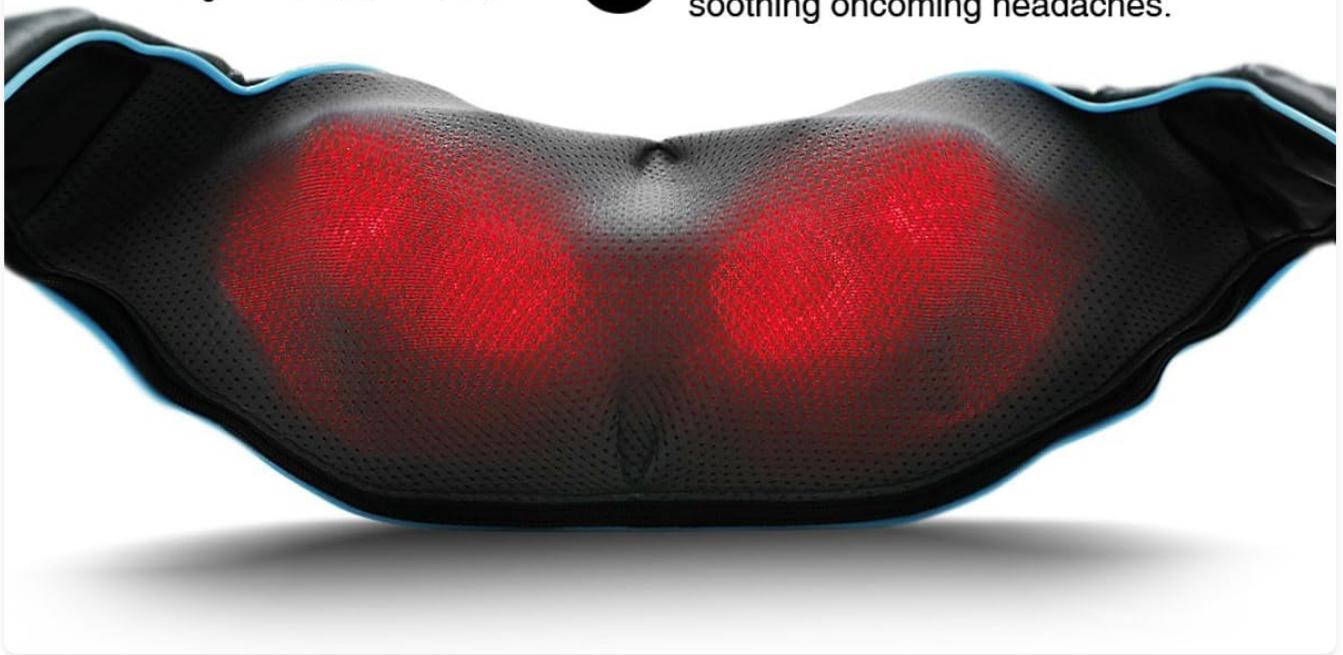


Image: A woman demonstrating the massager's use on her neck and shoulders, holding the arm straps for support.



Image: A woman using the massager on her lower back, illustrating its versatility for different body areas.

USAGE TIPS

Maximize your massage experience with these tips:

- For neck and shoulder massage, allow your head to rest comfortably against the massager for full support.
- Adjust the pressure by pulling the arm straps or leaning into the massager.
- Use the massager in various positions: seated in a chair, lying down, or even in your car (as a passenger).
- The heat function is particularly beneficial for easing muscle tension and improving blood circulation.



WARNING: PLEASE DO NOT USE IT WHEN DRIVING !

Image: A woman relaxing on a bed with the massager positioned on her neck, demonstrating comfortable use in a reclined position.

Best Gift

Massager, The best choice for the festival



Yourself



Loved one



Parents



Friends



Elder



Colleague

Image: A woman using the massager in the passenger seat of a car, highlighting its portability with the car charger. **WARNING: DO NOT USE WHILE DRIVING!**

MAINTENANCE

Proper care ensures the longevity of your massager:

- Unplug the device before cleaning.
- Wipe the surface with a soft, damp cloth. Do not use abrasive cleaners or immerse the device in water.
- The mesh cover over the massage nodes is breathable and easy to clean.
- Store the massager in a cool, dry place away from direct sunlight and moisture.



Image: A close-up view showcasing the high-quality leather and breathable mesh materials of the massager, designed for comfort and easy cleaning.

TROUBLESHOOTING

If you encounter any issues, refer to the following common problems and solutions:

Problem	Possible Cause	Solution
Massager does not turn on.	Not plugged in; power outlet issue; power adapter fault.	Ensure the massager is securely plugged into a working outlet. Check the power adapter for damage.
Heat function not working.	Heat function not activated; internal malfunction.	Press the Heat Button to activate. If still not working, contact customer support.
Massage nodes stop moving.	Automatic shut-off activated; overheating; internal issue.	The device automatically shuts off after 15 minutes. Allow it to cool down before restarting. If problem persists, contact support.

SPECIFICATIONS

Feature	Detail
Model Number	MO-BLT-010
Product Dimensions	12 x 4.3 x 7.28 inches
Item Weight	2.2 Pounds (1 Kilogram)
Power Source	Corded Electric
Material	Leather
Manufacturer	Mo Cuishle
Country of Origin	China

WARRANTY & SUPPORT

Mo Cuishle stands by the quality of its products:

- **30-Day Money Back Guarantee:** You can return your massager for any reason within 30 days of purchase.
- **1-Year Replacement Warranty:** The product is covered by a 1-year replacement warranty.
- For further assistance or warranty claims, please contact Mo Cuishle customer support.