

[Manuals.plus](#) /

› [BAOSHISHAN](#) /

› BAOSHISHAN Electric Strapping Tool ZKN-65b User Manual

## BAOSHISHAN ZKN-65b

# BAOSHISHAN Electric Strapping Tool ZKN-65b User Manual

Model: ZKN-65b | Brand: BAOSHISHAN

## 1. INTRODUCTION

This manual provides detailed instructions for the safe and efficient operation, setup, maintenance, and troubleshooting of your BAOSHISHAN Electric Strapping Tool, Model ZKN-65b. This battery-powered tool is designed for tensioning, welding, and cutting PP (Polypropylene) and PET (Polyester) straps, streamlining packaging processes for various items such as boxes, pallets, and bundles.



Figure 1: BAOSHISHAN Electric Strapping Tool ZKN-65b and its packaging.

## 2. SAFETY INSTRUCTIONS

Please read and understand all safety instructions before operating the tool. Failure to follow these instructions may result in injury or damage to the tool.

- Always wear appropriate personal protective equipment (PPE), including safety glasses and gloves, when operating the strapping tool.
- Keep hands and loose clothing clear of moving parts, especially the strapping feed and cutting mechanisms.
- Ensure the battery is correctly inserted and charged according to the instructions. Do not use damaged batteries or chargers.
- Do not attempt to strap items that exceed the tool's specified strapping width and thickness limits.
- Operate the tool in a well-lit and clear workspace.
- Disconnect the battery before performing any maintenance or adjustments.

- Keep the tool away from moisture and extreme temperatures.

### 3. PRODUCT OVERVIEW AND SPECIFICATIONS

#### 3.1 Package Contents

Upon unpacking, verify that all items listed below are present:



Figure 2: Included items in the product package.

- BAOSHISHAN Electric Strapping Tool (Main Unit)
- Battery (1 included)
- Battery Charger
- User Manual
- Service Card
- Basic Tools (e.g., screwdriver, wrench)
- Small accessories for polypropylene strapping (e.g., spring, gasket)

## 3.2 Technical Specifications

Specification	Value
Model Number	ZKN-65b
Product Dimensions	14.57 x 6.69 x 5.51 inches
Weight	10.14 Pounds (approx. 4.6 kg)
Battery Type	Lithium-ion
Battery Capacity	3000mAh (3.0A)
Battery Voltage	11.1V
Charging Time	Approx. 90 minutes (12V charger)
Strapping Width Compatibility	1/2 inch - 5/8 inch (13-16mm)
Strapping Thickness Compatibility	0.024 inch - 0.047 inch (0.6-1.2mm)
Compatible Strap Materials	PP (Polypropylene) and PET (Polyester)
Tensioning Force	600-2800N (Adjustable)
Tensioning Speed	100-200mm/s
Friction Welding Time	2-5 seconds (Adjustable)



Figure 3: Overview of tool specifications and controls.

## 4. SETUP

### 4.1 Charging and Installing the Battery

1. Before first use, fully charge the battery using the provided charger. The battery indicator light will show charging status. A blue light indicates a full charge.
2. To install the battery, slide it into the battery compartment at the rear of the tool until it clicks securely into place.

3. To remove the battery, press the release button and slide the battery out.

## 4.2 Adjusting for Strap Type (PP/PET)

The tool is compatible with both PP and PET straps within the specified width and thickness. For optimal performance with PP straps, it may be necessary to replace the short spring with the longer spring and add the silver gasket under the plate, as indicated in Figure 4.



Figure 4: Adjusting for Polypropylene (PP) strapping.

**1/2"-5/8"** Polyester (PET) Width

**0.024"-0.047"** Strapping Thickness



Figure 5: Polyester (PET) strapping compatibility.

### 4.3 Adjusting Tensioning Force and Welding Time

The tool features two adjustment knobs on the side for fine-tuning the tensioning force and welding time:

- **Tensioning Force:** Turn the left knob clockwise to increase tension (up to 2800N) and counter-clockwise to decrease it (down to 600N).
- **Friction Welding Time:** Turn the right knob clockwise to increase welding time (up to 5 seconds) and counter-clockwise to decrease it (down to 2 seconds).

**600-2800N** Tensioning Force Adjustable

**2-5S** Friction Welding Time Adjustable

Turn clockwise to increase,  
counterclockwise to decrease.



Figure 6: Tensioning force and welding time adjustment knobs.

Experiment with settings on scrap material to find the optimal balance for your specific strap type and package requirements.

## 5. OPERATING INSTRUCTIONS

Follow these steps to effectively strap your packages:

## 1. Insert the battery



battery capacity	Indicator light
0	red light
1/4	red light flashing
1/2-1	blue light

**Warning:** if the adhesion is not sufficient, please remove the straps, the battery must be charged.

## 2. Insert packing belt



Lift the handle with your right hand, insert the packing belt with your left hand, stack the top and bottom in parallel, release the handle.

## 3. Tighten the strap



Press the tensioning button and release the tensioning button after the strap has reached its tension strength. Tensioning operation can be interrupted or restarted at any time. In the tensioning process, LED displays in blue.

**Warning:** Keep strapping tools equilibrium shifting when tensioning, so please do not obstruct moving direction of the strapping tool.

## 4. Bonding of straps



Press the welding button and leave the hand immediately, the machine will automatically weld and cut off the excess straps.

After welding, lift up the handle and take out the strap.

Figure 7: Step-by-step operation guide.

- 1. Insert Battery:** Ensure a charged battery is securely installed in the tool. The battery capacity indicator light will show its charge level (blue for full, red for low, red flashing for very low).
- 2. Insert Packing Belt:** Lift the handle with your right hand. With your left hand, insert the strapping belt into the tool, ensuring the top and bottom straps are stacked parallel. Release the handle to secure the strap.
- 3. Tighten the Strap:** Press the tensioning button (typically the main lever or trigger). Hold it down firmly. The tool will begin to tension the strap. Release the tensioning button once the desired tension is reached. The LED will display blue during tensioning. Ensure the strapping remains stable and does not twist during this process.

4. **Bonding of Straps:** Press the welding button (usually a separate button). Hold this button down firmly for the set welding time (2-5 seconds). The machine will automatically weld the straps together using friction and cut off any excess. It is crucial to hold the welding button down until the sealing process is complete. After welding, release the welding button. **Do not squeeze the handle grip that releases the strapping until the flashing light on the tool stops flashing, indicating the weld has cooled and set.**
5. **Remove the Tool:** Once the welding is complete and the light has stopped flashing, lift the handle and carefully remove the tool from the strapped package.

## 5.1 Application Examples

The BAOSHISHAN Electric Strapping Tool is suitable for a variety of packaging applications, including:

- Securing cardboard boxes
- Bundling wood products and pallets
- Strapping steel coils
- Bundling pipes
- Securing stone blocks

### Bonding strength: approximate 75% of strapping tape

To get rid of the inconvenience of traditional heavy manual strapping tool, this electric strapping machine can be operated automatically within **5 seconds**.



Figure 8: Various applications of the strapping tool.

## 6. MAINTENANCE

Regular maintenance ensures the longevity and optimal performance of your strapping tool.

- **Cleaning:** Periodically clean the tool's exterior with a dry, soft cloth. Ensure no dust or debris accumulates in the strapping path or around the welding mechanism.
- **Cutter Inspection:** Regularly inspect the alloy cutter for wear or damage. A dull or damaged cutter can lead to incomplete cuts. Replace if necessary.
- **Battery Care:** Store batteries in a cool, dry place. Avoid fully discharging the battery frequently. If storing for extended periods, charge the battery to approximately 50% capacity.
- **General Inspection:** Before each use, check for any loose screws, damaged parts, or unusual noises during operation. Address any issues promptly.

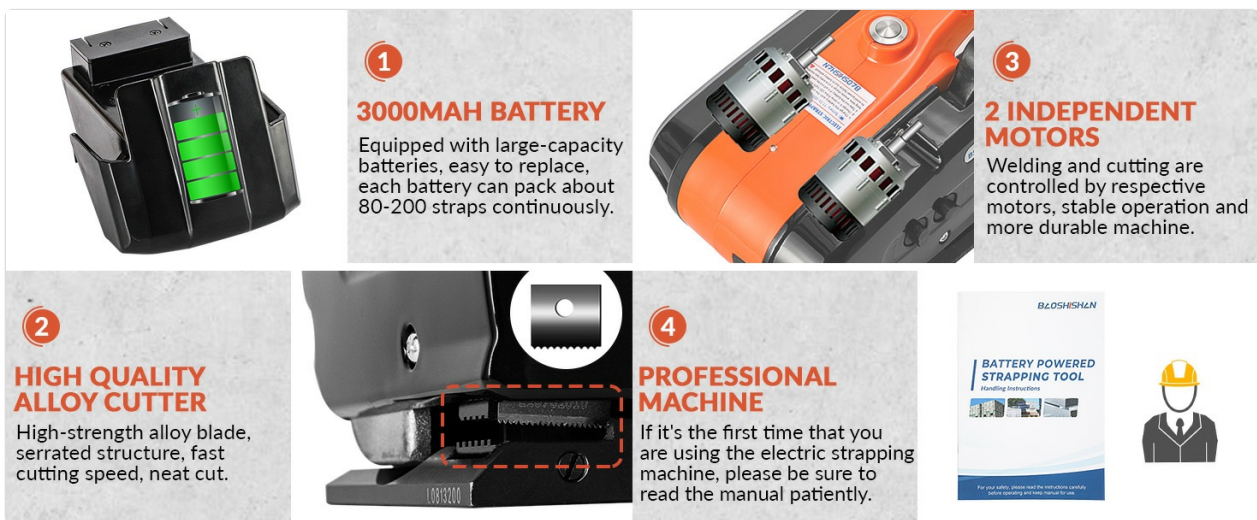


Figure 9: Internal components and features for maintenance reference.

## 7. TROUBLESHOOTING

This section addresses common issues you might encounter with your strapping tool.

Problem	Possible Cause	Solution
Poor strap adhesion/weak weld	<ul style="list-style-type: none"> <li>• Insufficient welding time.</li> <li>• Not holding welding button firmly/long enough.</li> <li>• Releasing handle too soon after welding.</li> <li>• Low battery.</li> <li>• Incorrect strap material/thickness.</li> </ul>	<ul style="list-style-type: none"> <li>• Increase welding time using the adjustment knob.</li> <li>• Ensure the welding button is pressed firmly and held for the entire set duration.</li> <li>• Wait for the flashing light to stop after welding before releasing the handle.</li> <li>• Charge the battery.</li> <li>• Verify strap compatibility with specifications.</li> </ul>

Problem	Possible Cause	Solution
Tool not cutting excess strapping	<ul style="list-style-type: none"> <li>• Dull or damaged cutter blade.</li> <li>• Internal adjustment issue.</li> </ul>	<ul style="list-style-type: none"> <li>• Inspect the cutter blade for wear or damage and replace if necessary.</li> <li>• If the issue persists after cutter inspection, contact customer support for internal adjustment guidance.</li> </ul>
Strap not tensioning properly	<ul style="list-style-type: none"> <li>• Insufficient tensioning force setting.</li> <li>• Strap not inserted correctly.</li> <li>• Low battery.</li> </ul>	<ul style="list-style-type: none"> <li>• Increase tensioning force using the adjustment knob.</li> <li>• Re-insert the strap, ensuring it is parallel and seated correctly.</li> <li>• Charge the battery.</li> </ul>
Battery not charging	<ul style="list-style-type: none"> <li>• Charger or battery fault.</li> <li>• Improper connection.</li> </ul>	<ul style="list-style-type: none"> <li>• Ensure charger is properly plugged in and connected to the battery.</li> <li>• Test with another compatible charger or battery if available. Contact support if issue persists.</li> </ul>

If you encounter a problem not listed here or if the suggested solutions do not resolve the issue, please contact BAOSHISHAN customer support.

## 8. WARRANTY AND SUPPORT

BAOSHISHAN provides a **12-month guarantee** for this strapping tool, covering manufacturing defects and malfunctions under normal use. Please retain your proof of purchase for warranty claims.

For technical assistance, troubleshooting beyond this manual, or warranty service, please contact the BAOSHISHAN customer support team. Our professional and friendly after-sales team is available to help you resolve any issues and ensure your satisfaction.

Refer to the service card included in your package for specific contact details or visit the official BAOSHISHAN website for support information.