

Manuals+

[Q & A](#) | [Deep Search](#) | [Upload](#)

manuals.plus /

- › [Tekin](#) /
- › [Tekin Rx8gen3 ESC and T8gen3 2000kv Motor Combo Instruction Manual](#)

Tekin Rx8gen3, T8gen3, TEKTT2336

Tekin Rx8gen3 ESC and T8gen3 2000kv Motor Combo Instruction Manual

Model: Rx8gen3, T8gen3, TEKTT2336

1. INTRODUCTION

This manual provides comprehensive instructions for the installation, operation, maintenance, and troubleshooting of your Tekin Rx8gen3 Electronic Speed Controller (ESC) and T8gen3 2000kv Brushless Motor Combo. Please read this manual thoroughly before using the product to ensure proper function and longevity.

The Tekin Rx8gen3 ESC and T8gen3 2000kv Motor are designed for high-performance remote-controlled vehicle applications, offering precise control and powerful output.

2. SAFETY INFORMATION

Always observe the following safety precautions to prevent injury or damage to the product and surrounding property:

- **Read all instructions:** Familiarize yourself with the product's features and operation before use.
- **Proper ventilation:** Ensure adequate airflow around the ESC and motor during operation to prevent overheating.
- **Battery safety:** Use only compatible batteries and follow battery manufacturer's safety guidelines. Incorrect battery usage can lead to fire or explosion.
- **Wiring:** Double-check all wiring connections for correct polarity and secure fit before applying power. Incorrect wiring can cause severe damage.
- **Moving parts:** Keep fingers, hair, and loose clothing away from rotating motor parts.
- **Water and moisture:** This product is not waterproof. Avoid exposure to water or high humidity to prevent electrical short circuits and damage.
- **Children:** This product is not a toy and is recommended for users 14 years and older. Adult supervision is advised for younger users.

3. PACKAGE CONTENTS

Verify that all items listed below are present in your package:

- Tekin Rx8gen3 Electronic Speed Controller (ESC)
- Tekin T8gen3 2000kv Brushless Motor
- Sensor Wire
- Instruction Manual (this document)
- Decal Sheet (may vary)



Image: The Tekin Rx8gen3 ESC and T8gen3 2000kv Motor Combo as it appears in the package. This image shows the main components of the product.

4. SETUP AND INSTALLATION

4.1 ESC Installation

1. **Mounting:** Securely mount the Rx8gen3 ESC in your vehicle chassis using double-sided tape or screws. Ensure it is positioned to allow for adequate airflow and easy access to connections.
2. **Receiver Connection:** Connect the ESC's receiver wire to the throttle channel (typically channel 2) on your RC receiver.

3. **Capacitor Bank:** Ensure the capacitor bank is securely attached to the ESC.

4.2 Motor Installation

1. **Mounting:** Install the T8gen3 2000kv motor into your vehicle's motor mount. Ensure proper gear mesh with the pinion gear.
2. **Sensor Wire:** Connect the sensor wire from the motor to the sensor port on the Rx8gen3 ESC. Ensure the connector is fully seated and oriented correctly.

4.3 Wiring Connections

Connect the motor to the ESC and the ESC to the battery following these steps:

- **Motor Wires:** Connect the three motor phase wires (A, B, C) from the T8gen3 motor to the corresponding output terminals on the Rx8gen3 ESC. The order of these wires can affect motor rotation direction, which can be adjusted later if needed.
- **Battery Wires:** Connect your battery connector to the main power input wires of the ESC, ensuring correct polarity (red to positive, black to negative). Use high-quality connectors capable of handling high current.

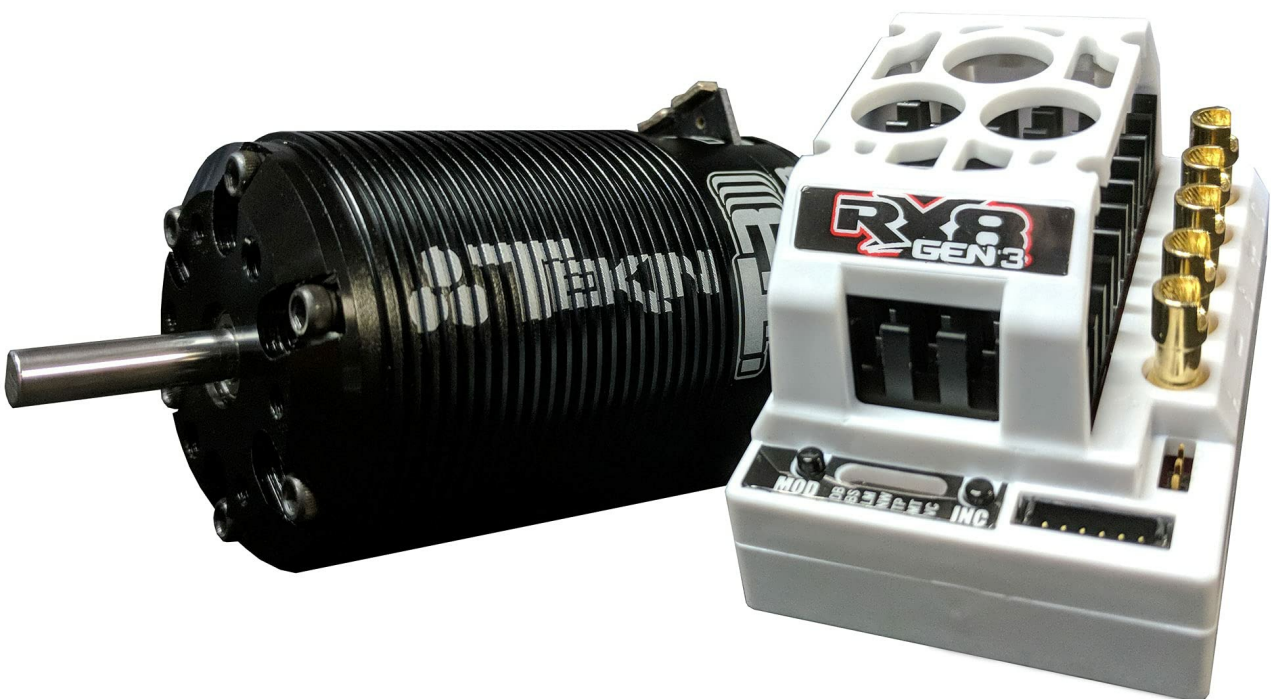


Image: Example of a typical wiring setup for the Tekin Rx8gen3 ESC and T8gen3 Motor. This illustration demonstrates the connections between the motor, ESC, receiver, and battery.

5. OPERATING INSTRUCTIONS

5.1 Initial Power-Up and Calibration

1. **Transmitter On:** Turn on your RC transmitter and ensure the throttle trim is at neutral.
2. **Connect Battery:** Connect the battery to the ESC. The ESC will emit a series of tones.
3. **Calibration:** Follow the specific calibration procedure outlined in the full Tekin Rx8gen3 manual (available on the Tekin website) to match the ESC to your transmitter's throttle signals. This typically involves holding the throttle at full, neutral, and full reverse during power-up.
4. **Test:** After calibration, test the throttle response. The motor should respond smoothly to throttle inputs.

5.2 Programming the ESC

The Rx8gen3 ESC offers extensive programming options. These can be adjusted using the onboard buttons and LED indicators, or more conveniently with a Tekin HotWire interface (sold separately) connected to a computer.

- **Adjustable Parameters:** Key parameters include drag brake, brake strength, timing, throttle profiles, voltage cutoffs, and more.
- **HotWire Interface:** For advanced tuning and firmware updates, the Tekin HotWire provides a graphical user interface for easy adjustments.

6. MAINTENANCE

Regular maintenance ensures optimal performance and extends the lifespan of your Tekin combo:

- **Cleaning:** Periodically clean the ESC and motor to remove dirt, dust, and debris. Use compressed air or a soft brush. Avoid using solvents.
- **Motor Bearings:** Inspect motor bearings for smooth operation. Replace if they feel rough or noisy.
- **Wiring Inspection:** Check all wires and connectors for signs of wear, fraying, or corrosion. Repair or replace damaged components immediately.
- **Temperature Monitoring:** Monitor ESC and motor temperatures during operation. Excessive heat can indicate an issue (e.g., incorrect gearing, over-stressing).
- **Firmware Updates:** Check the Tekin website for available firmware updates for your Rx8gen3 ESC to ensure you have the latest features and performance enhancements.

7. TROUBLESHOOTING

Refer to the table below for common issues and their potential solutions:

Problem	Possible Cause	Solution
Motor not responding	Incorrect wiring, uncalibrated ESC, dead battery, faulty sensor wire.	Check all connections, recalibrate ESC, charge/replace battery, inspect sensor wire.
ESC overheating	Over-gearing, insufficient cooling, too high timing, faulty motor.	Reduce gearing, improve airflow, reduce timing, check motor for resistance.

Problem	Possible Cause	Solution
Motor cogging/stuttering	Loose sensor wire, damaged sensor, incorrect motor timing, low battery voltage.	Ensure sensor wire is secure, check sensor, adjust timing, charge battery.
No power to receiver	ESC BEC failure, receiver wire disconnected, faulty receiver.	Check receiver wire, test with another receiver, contact support if BEC is faulty.

If you encounter issues not listed here or if the suggested solutions do not resolve the problem, please contact Tekin customer support.

8. SPECIFICATIONS

Key technical specifications for the Tekin Rx8gen3 ESC and T8gen3 2000kv Motor Combo:

Feature	Detail
Brand	Tekin
Model (ESC)	Rx8gen3
Model (Motor)	T8gen3 2000kv
Motor Type	Brushless, Sensored/Sensorless
Input Voltage (ESC)	2S-6S LiPo (Refer to full manual for specific limits)
Motor Kv	2000kv
Dimensions (Product)	Approximately 5.5 x 4.6 x 2 inches (13.97 x 11.68 x 5.08 cm)
Item Weight	Approximately 1 pound (453 grams)
UPC	706893023361
Recommended Age	14 years and up

Note: Detailed specifications, including current ratings and specific LiPo cell counts, are available in the complete Tekin Rx8gen3 and T8gen3 manuals on the official Tekin website.

9. WARRANTY AND SUPPORT

9.1 Warranty Information

Tekin products are manufactured to high standards. For specific warranty terms and conditions, please refer to the official Tekin website or the warranty card included with your product. Typically, warranties cover manufacturing defects for a limited period from the date of purchase. Damage resulting from misuse, improper installation, unauthorized modifications, or normal wear and tear is generally not covered.

9.2 Customer Support

Should you require technical assistance, have questions about your product, or need to initiate a warranty claim, please contact Tekin customer support through their official website. Have your product model number and

purchase date ready when contacting support.

Official Website: www.teamtekin.com